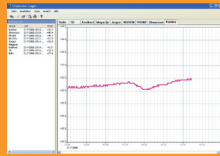
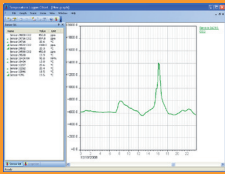




IP-66 sensors

For wireless Multi-Logging System



**External Temperature Probe
Resistance Temperature Detector**

PT-100



IP-PT100

Transmitting range 90 m. (Free field: 180 m.)

Measurement range* -200 to +400 Degrees Celsius, $\pm 0,5\%$
External RTD Probe (PT-100)

Powered by 1 pc. 3,6V mignon battery (AA)

Size (WxDxH) 62x25x88 mm

Cable length 750 mm

* Conversion according DIN/IEC 60751