



SMOKE SENSOR



MANUFACTURER INFORMATION

Dear Customer,
should you require technical advice and
your retailer could not help please contact
our technical support.

Schwaiger GmbH
Würzburger Straße 17
90579 Langenzenn

Hotline: +49 (0) 9101 702-199
www.schwaiger.de
homeautomation@schwaiger.de

BDA_ZHS20_a

GB USER MANUAL ZHS20



Congratulations and thank you for purchasing the Schwaiger ZHS20 product.
Below you will find useful operating guidelines.

Network inclusion of the sensor

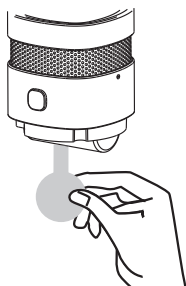
Put the Gateway into inclusion mode.

Remove the protective battery cover, press the networking button for 2 seconds until the green LED starts to flash fast.

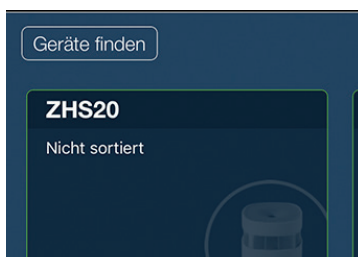
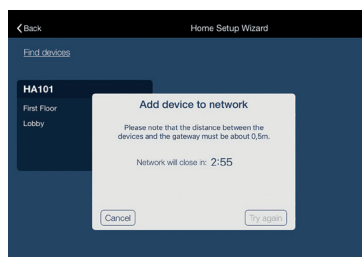
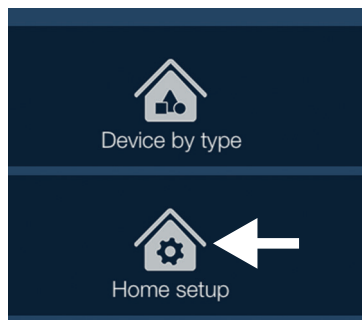
This is a smart smoke sensor which is based on the ZigBee Wireless Networking technology. It has a very low power consumption which makes for longer battery life. As soon as the sensor detects smoke, the alarm signal will sound and the red LED will start to flash.

Network inclusion

- 1. Remove the protective battery cover.**
To do so, remove the sensor from the bracket by turning it counter-clockwise.



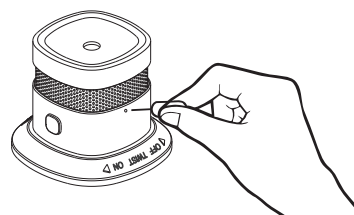
- 2. Put the Gateway into inclusion mode**



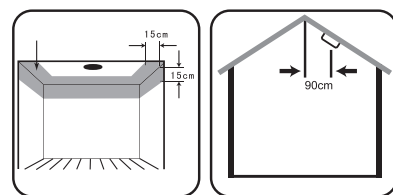
Please pay attention to the fact that during network inclusion, the distance between sensor and Gateway may not exceed 0.5 m.

3. Networking button

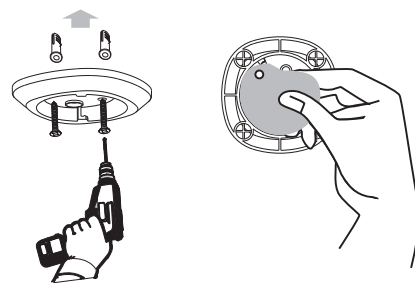
Press the networking button (with-in the hole) for 2 seconds until the green LED starts to flash fast, then let go. The device will be detected and included into the network.

**4. Installation of the Smoke Sensor**

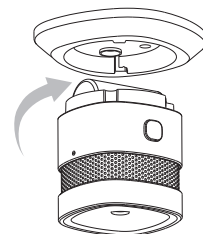
Select a place for installation.



- 5. Screw the bracket to the ceiling OR remove the protective cover from the adhesive pad and stick the bracket to the ceiling.**



- 6. Attach the sensor to the bracket by turning it clockwise.**

**7. Network removal of the device**

Put the Gateway into removal mode by choosing „Home setup“ in the main menu and then click on „Add device“ (See images on the left). Then reset the device to default settings.

8. Reset to default settings (Reset)

Press the networking button for 5 seconds until the green LED starts to flash slowly.

Note: For network inclusion, the sensor must always be in the factory state.

LED indicator of devices

Network inclusion	Press the networking button for 2 seconds until the green LED starts to flash (two times per second)
Network removal / Reset	The green LED flashes 6 times (once per second)

Technical data

Working voltage	DC 3 V (1xCR123A battery)
Static current	≤ 10 µA
Alarm current	≤ 60 mA
Noise level	85 dB
Working environment	-10°C ~ +50°C
Frequency range	2.4 GHz
Range	about 15 m (depending on building structure)
Dimension	60 x 60 x 49.2 mm

Important information

- This smoke sensor is only suitable for smoke detection. It cannot detect gas, heat or flames and cannot prevent or put out fires.
- This smoke sensor is not suitable for use in places with high humidity (e.g. bathrooms) or kitchens.
- Correct functioning of the smoke sensor should be checked regularly.
- The smoke sensor should be cleaned regularly in order to prevent malfunction due to dust and dirt.
- Smoke sensors have to be replaced after 10 years of use.
- In case that the smoke sensor does not function correctly, do not try to repair it yourself. Please contact the manufacturer.

Status information

Status	LED indicator	Alarm signal
Normal function	Red LED flashes every 53 seconds	No
Test mode	Red LED flashes	Fast peeping
Smoke detected	Red LED flashes	Fast peeping
Low battery	Red LED flashes once	Peeps once every 53 seconds
Malfunction	Red LED flashes twice every 53 seconds	Peeps twice every 53 seconds

Test mode

It is recommended to check correct functioning of the sensor at least once a week. To do so, please press and hold the button Test for 3 seconds until the alarm signal sounds. Never check correct functioning of the sensor by holding it over a flame.

Replacing the battery

Under normal conditions, battery power can last up to 3 years. However, batteries should still be replaced regularly, at the very least when the sensor indicates low battery. Upon replacing the battery, please make sure to position it correctly.

Choosing a Suitable Location

For complete coverage in residential units, Smoke Sensors should be installed in all rooms, halls, storage areas, basements and attics in each family living unit. Minimum coverage is one sensor on each floor and one in each sleeping area.

1. Install Smoke Sensor as close to the center of ceiling as possible. If this is not practical, put the sensor on the ceiling, no closer than 6inches(15 cm) from any wall or corner and no closer than 12inches(30 cm) from any lamp or other object.
2. If some of your rooms have sloped, peaked, or gabled ceilings, try to mount sensors 3 feet(0.9 meter) measure horizontally from the highest point of ceiling.

Nuisance alarms take place when Smoke Sensors are installed where they will no work properly. To avoid nuisance alarms, do not install Smoke Sensors in the following situations:

- Combustion particles are the by-products of something that is burning. Thus, in or near areas where combustion particles are present you do not install the Smoke Sensors to avoid nuisance alarms, such as kitchens with few windows or poor ventilation, garages where there may be vehicle exhaust, near furnaces, hot water heaters, and space heaters.
- Do not install Smoke Sensors less than 20 feet (6 meters) away from places where combustion particles are normally present, like kitchens. If a 20-foot distance is not possible, try to install the alarm as far away from the combustion particles as possible, preferably on the wall. To prevent nuisance alarm alarms, provide good ventilation in such places.
- In very dusty or dirty areas, dirt and dust can build up on the alarm’s sensing chamber, to make it overly sensitive. Additionally, dust or dirt can block openings to the sensing chamber and keep the alarm from sensing smoke.
- Near fluorescent lights, electrical “noise” from fluorescent lights may cause nuisance alarms. Install Smoke Sensor at least 5 feet(1.5 meters) from such lights.
- If used in rooms and buildings whose structure is made up of a lot of metal and concrete, the wireless signal range of the smoke sensor may suffer significantly.

Disposal information

This product contains batteries. Please refer to the applicable disposal regulations for batteries. It is an electrical device. They can be disposed of free of charge at specified disposal sites.

EC Declaration of Conformity

This device corresponds to the relevant EU directives. With the CE sign the Schwaiger GmbH ensures, that the product is conformed to these basic standards and directives. The conformity explanation can be found under the following address: <http://www.schwaiger.de/downloads>

Possible causes and solutions for common problemsde Probleme

Problem	Possible cause	Solution
The alarm is triggered even though there is no smoke	The sensor is dirty or covered in dust	Clean the sensor carefully using warm water and a soft brush
The device peeps twice at regular intervals	Low battery	Replace the battery
The alarm tone does not sound or is very weak	Low battery	Replace the battery
The alarm does not sound upon pressing the Test button	Battery is not positioned correctly in the bracket or is positioned the wrong way	Position the battery correctly paying attention to the + and - poles
	Low battery	Replace the battery
The device is not available in the network	Low battery	Replace the battery
	The distance between the smoke sensor and the Gateway is too large for wireless networking	1. Install a repeater 2. Position the Gateway closer to the sensor
Network inclusion of the smoke sensor failed	The sensor is still connected to another network	Please carry out a reset
	The Gateway has not been put into inclusion mode	Put the Gateway into inclusion mode