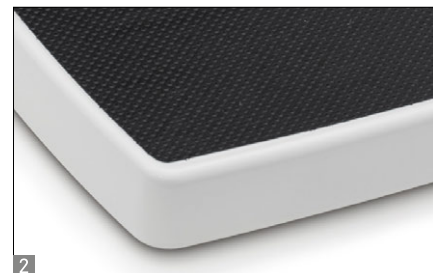


Mechanical personal floor scale KERN MGC

HOME CARE



NEW
5x



The classic robust scale for to measure body weight quickly

Features

- Timeless design
- Robust construction
- **1** Large, clear circular scale which is easy to read
- **2** Large platform with non-slip surface made of plastic
- Secure and non-slip positioning with rubber feet
- Easy to operate:
simply tap on it – stand on it – read the weight
- Easy adjustment of the display using the setting wheel
- **Note:** The models are only delivered in a set of 5 units. I.e. the price given in the table refers to a delivery of 5 items. Cannot be delivered individually.

Technical data

- Digit height 8 mm
- Overall dimensions
W×D×H 285×425×85 mm
- Net weight approx. 3,1 kg

Accessories

- Cleaning cloths, alcohol-free cloths for wipe disinfectant, quick-acting, on basis of modern quaternary ammonium compounds, and also against papova viruses. Particularly gentle on materials, and therefore very well suited for the disinfection of alcohol sensitive medical products. Fulfill the legal requirements for occupational safety in accordance with TRGS 525/540. Packaging contents 80 pcs., size 20×22 cm per cloth KERN MYC-01

STANDARD



Model	Weighing range	Readout	
	[Max] kg	[d] kg	
MGC 100K-1S05	150	1	

Pictograms

<p>Adjusting program CAL: For quick setting up of the balance's accuracy. External adjusting weight required.</p>	<p>Hold function: When the weighing conditions are unstable, a stable weight is calculated as an average value.</p>	<p>Binocular Microscope: For the inspection with both eyes</p>
<p>Data interface RS-232: To connect the balance to a printer, PC or network.</p>	<p>Protection against dust and water splashes IPxx: The type of protection is shown in the pictogram</p>	<p>Trinocular Microscope: For the inspection with both eyes and the additional option for the connection of a camera</p>
<p>RS-485 data interface: To connect the balance to a printer, PC or other peripherals. Suitable for data transfer over large distances. Network in bus topology is possible</p>	<p>Stainless steel: The balance is protected against corrosion</p>	<p>Abbe Condenser: With high numerical aperture for the concentration and the focusing of light</p>
<p>Bluetooth* data interface: To transfer data from the balance to a printer, PC or other peripherals.</p>	<p>Suspended weighing: Load support with hook on the underside of the balance.</p>	<p>Halogen illumination: For pictures bright and rich in contrast</p>
<p>Control outputs (optocoupler, digital I/O): To connect relays, signal lamps, valves, etc.</p>	<p>Battery operation: Ready for battery operation. The battery type is specified for each device</p>	<p>LED illumination: Cold, energy saving and especially long-life illumination</p>
<p>Statistics: using the saved values, the device calculates statistical data, such as average value, standard deviation etc.</p>	<p>Rechargeable battery pack: Rechargeable set</p>	<p>Fluorescence illumination for compound microscopes: With 100W mercury lamp and filter</p>
<p>PC Software: to transfer the measurements from the device to a PC.</p>	<p>Battery operation rechargeable: Prepared for a rechargeable battery operation</p>	<p>Fluorescence illumination for compound microscopes: With 3W LED illumination and filter</p>
<p>Wireless data transfer: between the weighing unit and the evaluation unit using an integrated radio module.</p>	<p>Universal mains adapter: with universal input and optional input socket adapters for A) EU, GB; C) EU, GB, CH, USA, AUS.</p>	<p>Phase contrast unit: For a higher contrast</p>
<p>GLP/ISO log: With date and time. Only with KERN printers.</p>	<p>Mains adapter: 230V/50Hz in standard version for EU. On request GB, AUS or USA version available.</p>	<p>Darkfield condenser/unit: For a higher contrast due to indirect illumination</p>
<p>Piece counting: Reference quantities selectable. Display can be switched from piece to weight.</p>	<p>Power supply: Integrated in balance. 230V/50Hz standard EU. More standards e.g. GB, AUS or USA on request.</p>	<p>Polarising unit: To polarise the light</p>
<p>Totalising level A: The weights of similar items can be added together and the total can be printed out.</p>	<p>Weighing principle: Strain gauges: Electrical resistor on an elastic deforming body.</p>	<p>Infinity system: Infinity corrected optical system</p>
<p>Weighing units: Can be switched to e.g. nonmetric units at the touch of a key. Please refer to website for more details.</p>	<p>Peak hold function: capturing a peak value within a measuring process.</p>	<p>Automatic temperature compensation: For measurements between 10 °C and 30 °C</p>
<p>Weighing with tolerance range: (Check weighing) Upper and lower limiting can be programmed individually, e.g. for sorting and dosing. The process is supported by an audible or visual signal, see the relevant model</p>	<p>Push and Pull: the measuring device can capture tension and compression forces.</p>	<p>Verification possible: The time required for verification is specified in the pictogram.</p>
<p>Hold function: When patients do not stand, sit or lie completely still, a stable weight is calculated using an average weight.</p>	<p>Integrated scale: In the eyepiece</p>	<p>Package shipment: The time required for internal shipping preparations is shown in days in the pictogram.</p>
<p>Monocular Microscope: For the inspection with one eye.</p>	<p>360° rotatable microscope head</p>	<p>Pallet shipment: The time required for internal shipping preparations is shown in days in the pictogram.</p>

*The Bluetooth® word mark and logos are registered trademarks owned by Bluetooth SIG, Inc. and any use of such marks by KERN & SOHN GmbH is under license. Other trademarks and trade names are those of their respective owners.

Your KERN specialist dealer