



**Model Number**

**MotionScan**

Combined sensor

**Features**

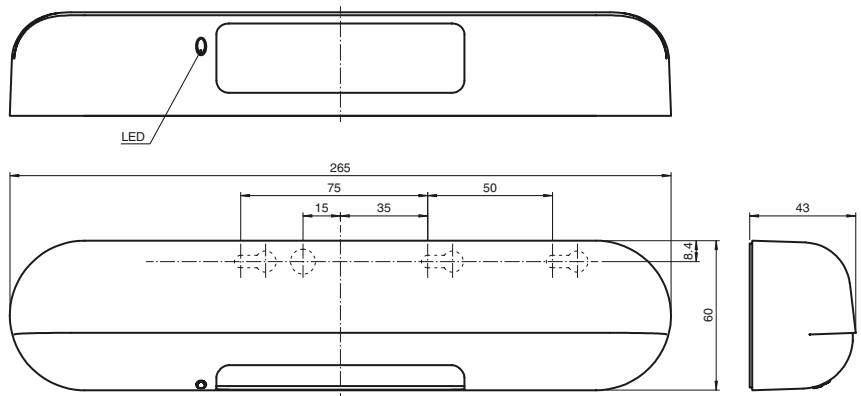
- Combined sensor for opening and securing automatic sliding doors
- Radar opening impulse
- Closing edge safety mechanism with diffuse sensor
- Safety mechanism in accordance with EN 16005
- Extra-large, adjustable protection field in front of the door
- Door learn function

**Product information**

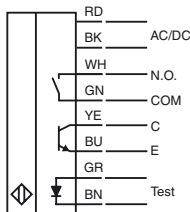
The two-in-one MotionScan sensor for opening and securing automatic sliding doors allows doors to be opened in a timely manner thanks to its large radar detection field. A large, adjustable infrared protection field ensures maximum safety. The special Door Learn function enables a protection field to be defined both in front of and behind the door. The MotionScan works reliably with a wide range of floor surfaces. It is incredibly easy to install and operate with single-button operation and multicolor LED display.

Release date: 2018-06-06 15:59 Date of issue: 2018-06-06 285849\_eng.xml

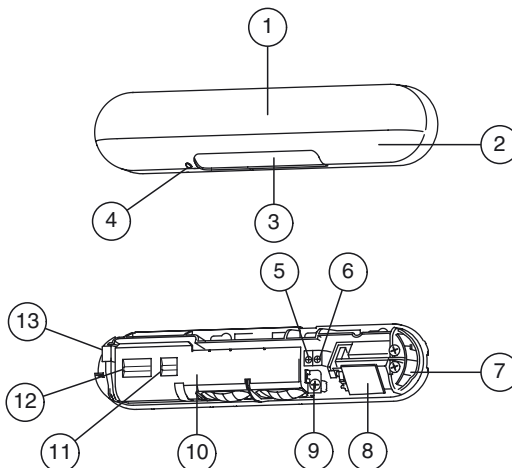
**Dimensions**



**Electrical connection**



**Indicators/operating means**



1	Cover
2	Radar detection window
3	IR detection window
4	Indicator LED (red, green, blue)
5	IR sensitivity control
6	Radar sensitivity control
7	Range mask
8	Radar sensor unit
9	Depth adjustment screw (IR range)
10	IR sensor unit
11	DIP switch Y
12	DIP switch X
13	Connection

**Technical data**

**General specifications**

Detection field	AIR, adjustable , total field: 2400 mm x 1000 mm (WxD) for a mounting height of 2200 mm
Detection field	Radar sensor 2500 mm x 4000 mm (d x w) at installation height of 2200 mm and 45° angle
Detection range max.	0 ... 3200 mm
Light source	3 Series
Light type	modulated infrared light
Setting angle	-8 ... 4 °
Operating frequency	24.15 ... 24.25 GHz K-Band , Radar sensor
Transmitter radiated power (EIRP)	< 20 dBm

**Functional safety related parameters**

Performance level (PL)	PL d
Category	Cat. 2
MTTF <sub>d</sub>	339.83 a
Diagnostic Coverage (DC)	81.52 %

**Indicators/operating means**

Function indicator	LED green/blue/red/orange
Control elements	DIP-switch
Control elements	sensitivity adjustment
Parameterization indicator	LED flashes when in adjustment mode Fast orange

**Electrical specifications**

Operating voltage	U <sub>B</sub>	12 ... 24 V DC / 12 ... 24 V AC +/- 10%, 50 - 60 Hz
No-load supply current	I <sub>0</sub>	≤ 80 mA at 24 V DC ≤ 150 mA at 12 V:
Power consumption	P <sub>0</sub>	2.5 VA

**Input**

Activation current	at 24 V DC 6 mA
Test input	active with +U <sub>B</sub>

**Output 1**

Output type	Infrared, optocoupler
Switching voltage	48 V DC
Switching current	300 mA resistive load
De-energized delay	0.5 s
Switching type	light/dark on selectable programmable
Response time	100 ms up to 200 ms

**Output 2**

Output type	Radar, relay
Switching voltage	48 V DC
Switching current	100 mA resistive load
De-energized delay	1.5 s
Switching type	NO/NC programmable
Response time	100 ms up to 200 ms

**Directive conformity**

Machinery Directive	
Directive 2006/42/EC	EN 12978:2003+A1:2009 EN ISO 13849-1:2008 + AC:2009 EN 16005:2012 Chapter 4.6.8

**Radio and telecommunication terminal equipment**

Directive 2014/53/EU	EN 301489-1 V1.9.2:2011 EN 301489-3 V1.6.1:2013 This device can be used in all countries within the European Union. Use in North America is not permitted. In other countries, all applicable national regulations must be observed.
----------------------	--

**Ambient conditions**

Operating temperature	-20 ... 60 °C (-4 ... 140 °F)
Storage temperature	-20 ... 60 °C (-4 ... 140 °F)
Relative humidity	max. 80 %

**Mechanical specifications**

Mounting height	max. 3200 mm
Degree of protection	IP54 (iwhen mounted)
Connection	Male connector 8-pin , Connecting cable included with delivery
Material	
Housing	ABS
Mass	approx. 260 g
Dimensions	(W x H x D) 265 mm 60 mm 43 mm
Note	Please refer to the package insert for information on how to mount and install the sensor correctly.

**General information**

Scope of delivery	sensor , cable , 2 screws , Mounting aid , Instruction leaflet
-------------------	--

**Suitable series**

Series	MotionScan
--------	------------

**Compliance with standards and directives**

**Typical applications**

- Two-in-one sensor for opening and securing automatic sliding doors

**Accessories**

**MotionScan Intern. Mounting**

Ceiling mount kit

**MotionScan Mount. Bracket**

Mounting bracket

**MotionScan Weather Cap**

Weather cover

Release date: 2018-06-06 15:59 Date of issue: 2018-06-06 285849\_eng.xml

Standard conformity

Standards

DIN 18650-1:2010 Chapter 5.7.4

Approvals and certificates

EAC conformity

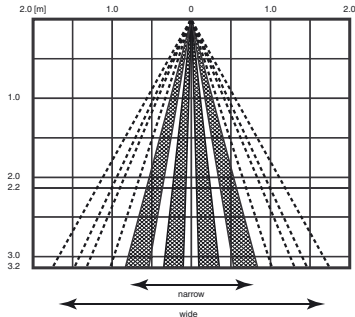
TR CU 020/2011

CCC approval

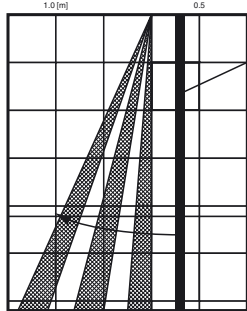
CCC approval / marking not required for products rated ≤36 V

Curves/Diagrams

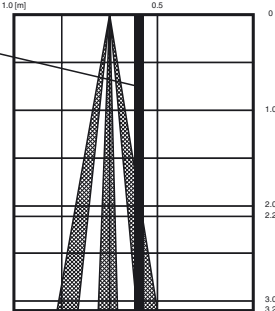
IR:



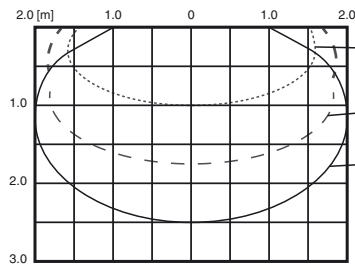
Far: Setting 4°



Near: Setting -8°



Radar:



- 15°
- 30°
- 45°

