



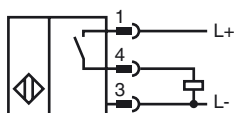
**Model Number**

NJ1,5-F2-E2-V1

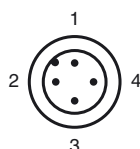
**Features**

- 1.5 mm with switching tappet
- 3-wire DC

**Connection**



**Pinout**



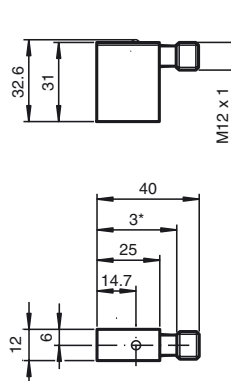
Wire colors in accordance with EN 60947-5-2

1	BN	(brown)
2	WH	(white)
3	BU	(blue)
4	BK	(black)

**Accessories**

- AS 12/80**  
Stop screw
- V1-G**  
4-pin, M12 female field-attachable connector
- V1-W**  
4-pin, M12 female field-attachable connector
- V1-G-2M-PUR**  
Cable socket, M12, 4-pin, PUR cable
- V1-W-2M-PUR**  
Cable socket, M12, 4-pin, PUR cable
- AS 08/15**  
Stop screw
- AS 08/40**  
Stop screw

**Dimensions**



**Technical Data**

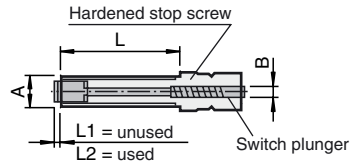
General specifications		
Switching element function	PNP	NO
Rated operating distance	s <sub>n</sub>	1.5 mm
Installation	embeddable	
Output polarity	DC	
Assured operating distance	s <sub>a</sub>	0 ... 1.215 mm
Nominal ratings		
Operating voltage	U <sub>B</sub>	10 ... 30 V DC
Switching frequency	f	0 ... 1000 Hz
Reverse polarity protected	reverse polarity protected	
Short-circuit protection	pulsing	
Voltage drop	U <sub>d</sub>	≤ 3 V
Operating current	I <sub>L</sub>	0 ... 200 mA
No-load supply current	I <sub>0</sub>	≤ 15 mA
Indication of the switching state	LED, red	
Ambient conditions		
Ambient temperature	-25 ... 70 °C (-13 ... 158 °F)	
Mechanical specifications		
Connection type	Device connector M12 x 1 , 4-pin	
Housing material	PA	
Protection degree	IP67	
Note	Use a stop screw combined with a model -F2 sensor from Pepperl+Fuchs GmbH. The maximum actuation speed of the control slide is 0.1 m/s	
Compliance with standards and directives		
Standard conformity	Standards	
	EN 60947-5-2:2007 IEC 60947-5-2:2007	
Approvals and certificates		
UL approval	cULus Listed, General Purpose	
CSA approval	cCSAus Listed, General Purpose	

Release date: 2011-07-22 15:51 Date of issue: 2011-07-22 0865688\_eng.xml

**Installation hint**

The inductive proximity sensor with plug-in acknowledgement elements is designed for applications where the simple installation of an adjustable mechanical stop with electronic acknowledgement is required. Heavy duty fine threaded stop screws serve as finely adjustable end stops. The state of the acknowledgement element is indicated by the built-in LED on the proximity sensor.

Accessories:  
Stop screws (Acknowledgement elements)



Type Coding	A	B	L	L1	L2	Load F max.
AS 08/15	M 8 x 1	6	15	3,5	2	2 000 N
AS 08/40	M 8 x 1	6	40	3,5	2	2 000 N
AS 10/50	M 10 x 1	7	50	2,5	1	9 500 N
AS 12/60	M 12 x 1	9	60	2	0,5	20 500 N
AS 12/80	M 12 x 1	9	80	2	0,5	20 500 N

