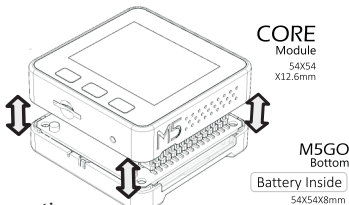


# M5 CORE FIRE DEVELOPMENT KIT

- ESP32-Microcontroller with Wifi and Bluetooth
- 5.08 cm (2.0") LCD, 1W speaker, microSD slot, I2C port, 3D antenna
- 16 MB-Flash and 4 MB-PSRAM, MPU6886 BMM150 motion sensor
- 600 mAh battery, LED Bar, MIC, LEGO compatible
- Includes magnet charging base and USB-C cable



- ESP32 Wi-Fi BLE FLASH BMM150 3D-Antenna
- 5.08 cm (2") LCD 320x240 TYPE-C USB SD-Reader
- 1W Speaker MEMS MIC RGB LED x 10 3 Buttons
- 600 mAh Battery GROVE I2C GROVE I/O GROVE UART
- MicroPython LEGO Compatible Arduino Compatible



## Operation

- single press **POWER ON** when using battery, and **RESET**.
- double press **POWER OFF** when using battery.

**TYPE C** Power Supply Charge  
UART/Upload

GROVE PH2.0-4  
SCL SDA **5V** GND

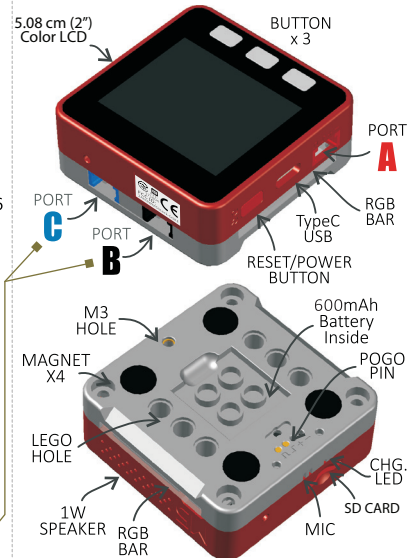
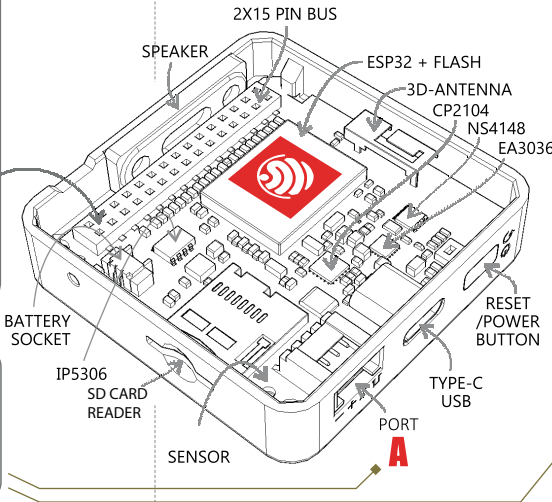
MicroSD Carte (SD-Card)  
≤16GB

### M BUS

GND	ADC	G35
GND	ADC	G36
GND	RST	EN
G23	MOSI	DAC/SPKG25
G19	MISO	DAC G26
G18	SCK	<b>3.3V</b>
G3	RXD0	TXD0 G1
G16	RXD2	TXD2 G17
G21	SDA	SCL G22
G2	GPIO	GPIO G5
G12	IIS_SK	IIS_WS G13
G15	IISOUT	IIS_MK G0
HPWR	IIS_IN	G34
HPWR	<b>5V</b>	
HPWR	<b>BATTERY</b>	

GROVE PORT	CABLE				
<b>A</b>	I2C	GND	5V	SDA	SCL
<b>B</b>	I/O	GND	5V	G26 In/Out	G36 Input
<b>C</b>	UART	GND	5V	TXD	RXD

## Internal View



Item no. 2179957

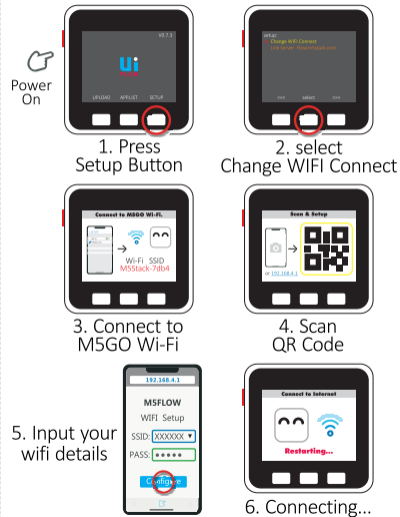


<https://www.conrad.de/>

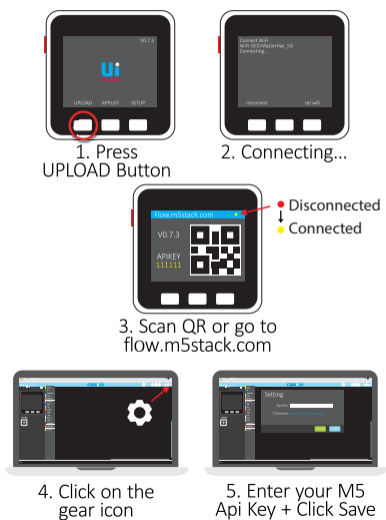


<https://docs.makerfactory.io/>

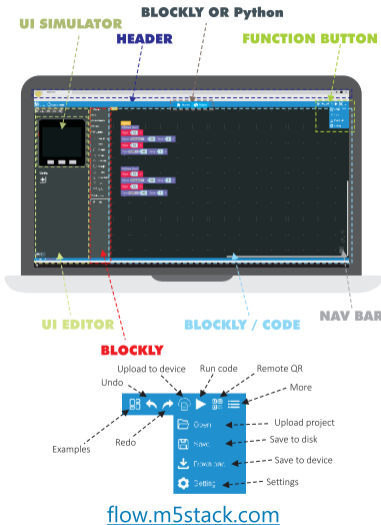
## Connect WiFi



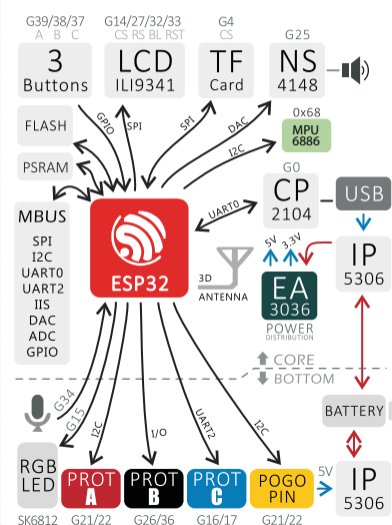
## Configuring UIFLOW



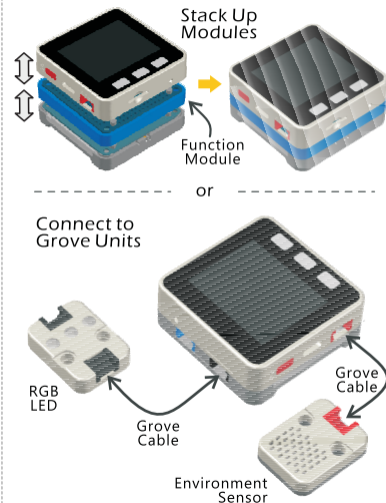
## UI FLOW



## Schematic



## Extension



## Specifications

Model	FIRE
ESP32	240 MHz dual core Tensilica LX6 microcontroller with 600 DMIPS, Integrated 520 KB SRAM, Integrated 802.11 b/g/n HT40 Wi-Fi transceiver, baseband, stack and LWIP, Integrated dual mode Bluetooth.
Flash	16M FLASH + 4M PSRAM
Input	5V @ 500mA
Interface	TypeC x 1, GROVE(I2C+I/O+UART), Pogo Pin x 1
LCD	5.08 cm (2") LCD 320x240, color TFT LCD, ILI9342
Speaker	1W-0928
Mic	MEMS Analog BSE3729 Microphone
LED	SK6812 3535 RGB LED x 10
Sensor	MPU6886 BMM150
Battery	600 mAh@3.7V, inside.
Op.Temp.	0 to +40 °C (+32 to +104 °F)
Size	54 x 54 x 21 mm
C.A.S.E	Plastic ( PC )
Weight	56g