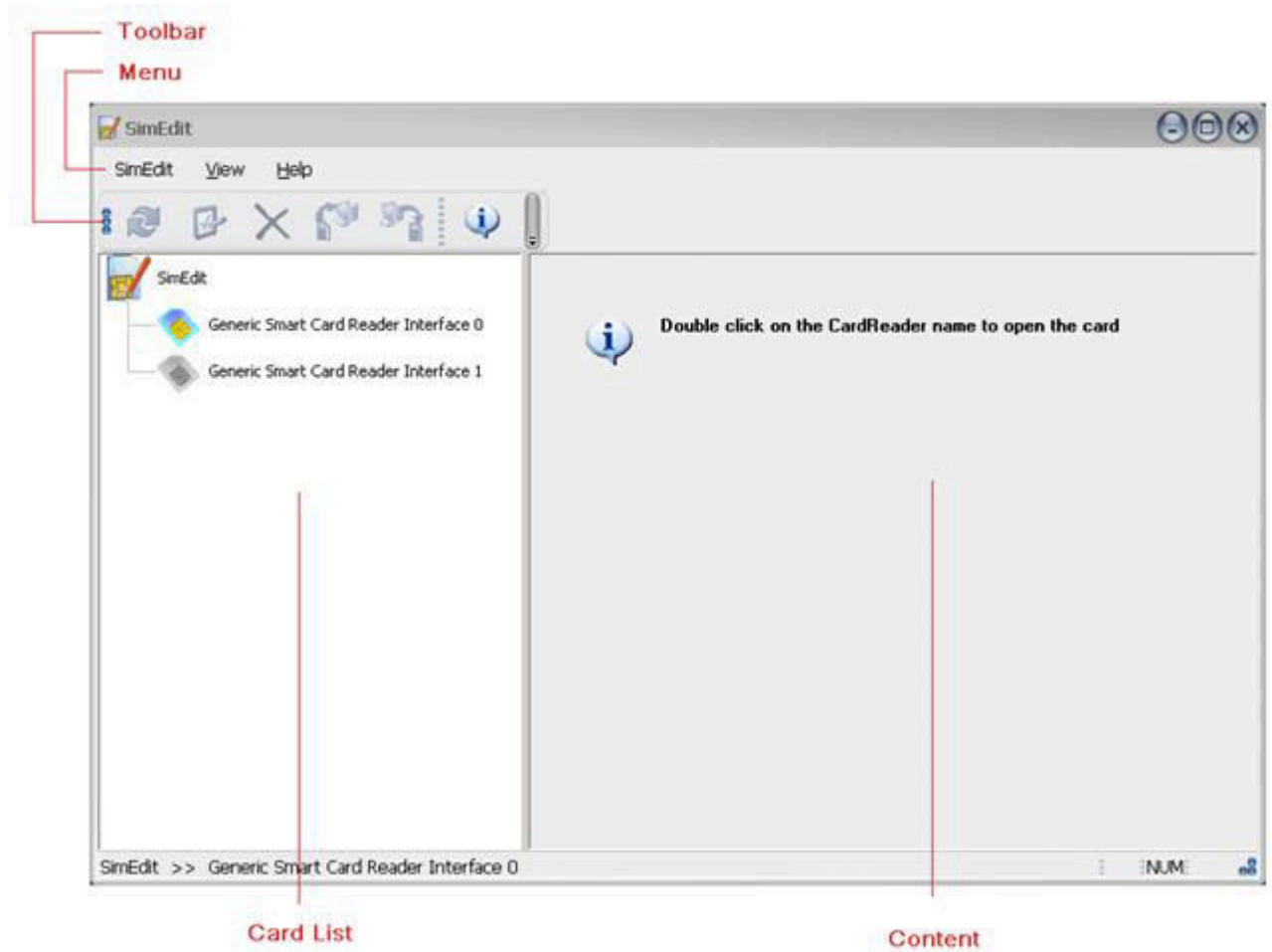


SimEdit Software User Manual

Ver 1.0

Main Window



Menu:

Provide some actions on changing program view and some SIM card related actions.

The View menu enables you to show or hide toolbar and status bar.

The SimEdit menu contains actions related with SIM card.

Toolbar:

Here are the action shortcuts; these actions will appear clickable whenever it is applicable.



Refresh - Read data from SIM card.



Edit - Edit the selected item, double click on the item will do the same.



Delete - Delete the selected item, press DELETE key will also trigger this action.



Copy to PC - Copy selected items to Local storage file on PC.



Copy to SIM - Copy Selected items to SIM card.



About - Show Information about this program.

Card List:

This list will show you all available Smartcard readers and their status.

Every item under SimEdit node represents a smartcard reader recognized by the program.

For detailed description, see [Card List](#) help page.

Content Window:

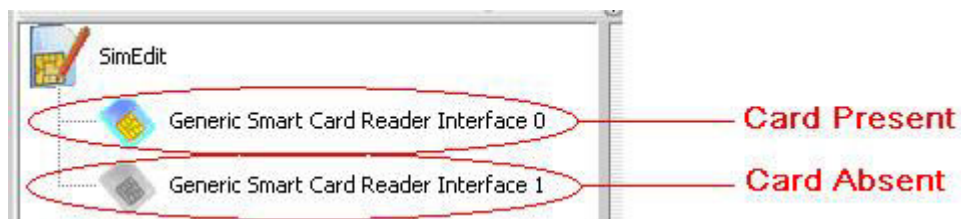
Information on the SIM card will be represented here for you to read, modify or backup.

Card List



The Card List will show you all available Smartcard readers and their status. Every item under SimEdit node represents a smartcard reader recognized by the program.

Reader Status - The icon before the card name shows you the status of the card reader:



Open A Card - To open a card, you need to double click on the reader name. Note: If the security feature (PIN1 code) of the SIM card is enabled, You will have to provide correct PIN1 code to access private data on that SIM card.

For detailed information, see [Security](#) help page.

After Card Opened - After you open a card, a list of function will be shown:



SIM Card Functions



After a SIM card opened, you will see a [Card Summary](#), and the following four functions are available for you to browse and modify information on that SIM card:



[Phonebook](#)

View and edit phonebook entries on SIM card and PC.



[Call History](#)

View last dialed numbers stored on SIM card.



[Short Message](#)

View and edit short messages on SIM card and PC.



[Security](#)

SIM card security management.

Card Summary



The Card Summary provides you basic information of the SIM card:

The screenshot shows the SimEdit software interface. The title bar reads "SimEdit". Below the title bar is a menu bar with "SimEdit", "View", and "Help". A toolbar contains several icons: a refresh icon, a document icon, a close icon, a delete icon, a copy icon, a paste icon, a vertical ellipsis icon, and an information icon. The main window is divided into two panes. The left pane shows a tree view under "SimEdit" with the following items: "Generic Smart Card Reader", "1. Phone Book", "2. Call History", "3. Short Message", "4. Security", and another "Generic Smart Card Reader". The right pane is titled "SIM Card Summary" and contains a table with the following data:

ICCID	89860085128026076990
Service Provider	
Max Phonebook Entry	150
Max Short Message Entry	40
Max Call History Entry	10

The status bar at the bottom of the window displays "SimEdit >> Generic Smart Card Reader Interface 0" on the left and "NUM:" followed by a small icon on the right.

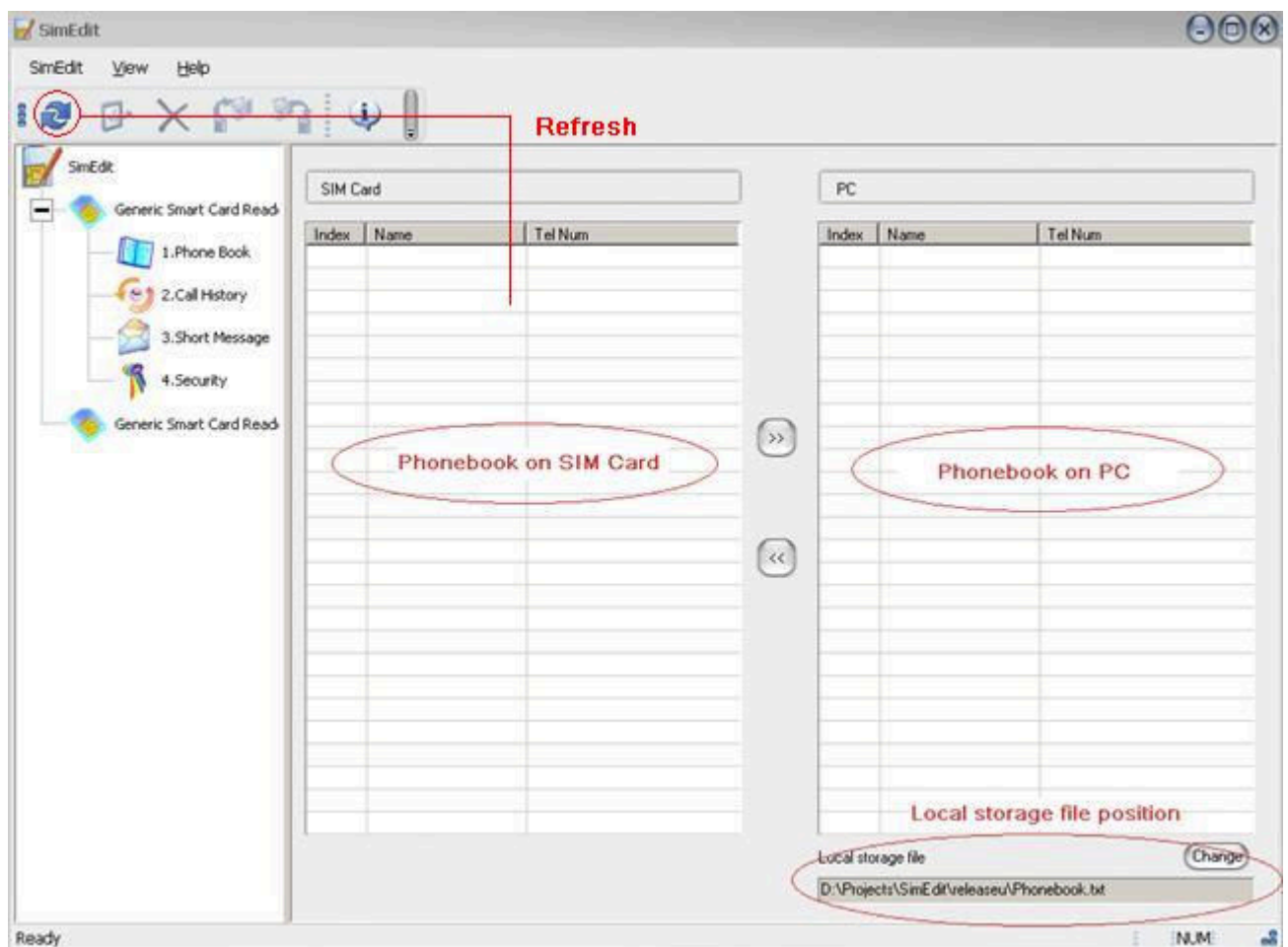
The information on this page is read only, so there is no action related with this page.

Phonebook



The phonebook page has three parts: Phonebook on SIM card, Phonebook on PC, Local storage file position.

After you open a SIM card and navigate to the Phonebook page from function list on the left, you will see the picture below:



Phonebook on SIM Card:

Here you can see a list of phonebook entries on the SIM card. Initially there is no data in this list until you ask

the program to load data from SIM card by click Refresh button on the toolbar. Then the program will fill the

list with data read from the SIM card.



Use Refresh button to load data from SIM card.

Phonebook on PC:

This is a list of phonebook entries that stored locally on the PC. The storage position is specified by the

Local storage file position shown under the list. And the list is initialized immediately when you open a

SIM card. The program fills this list with data stored in the **Local storage file**.

Note: This list is shared by all opened SIM card, which means if you look at the Phone Book page of

different card, you will find the contents of phonebook on PC are the same. Modification on one page

will affect all pages. You can make use of this feature to share data between cards, copy data between them.

Local storage file position:

In this part, you can see and change the local storage file position. By default, the program sets this position

to the same directory which the program itself resides. You can change this position as you wish by press

the **Change** button, and [select an old storage file to load the phonebook data stored in that file](#), or [type a new](#)

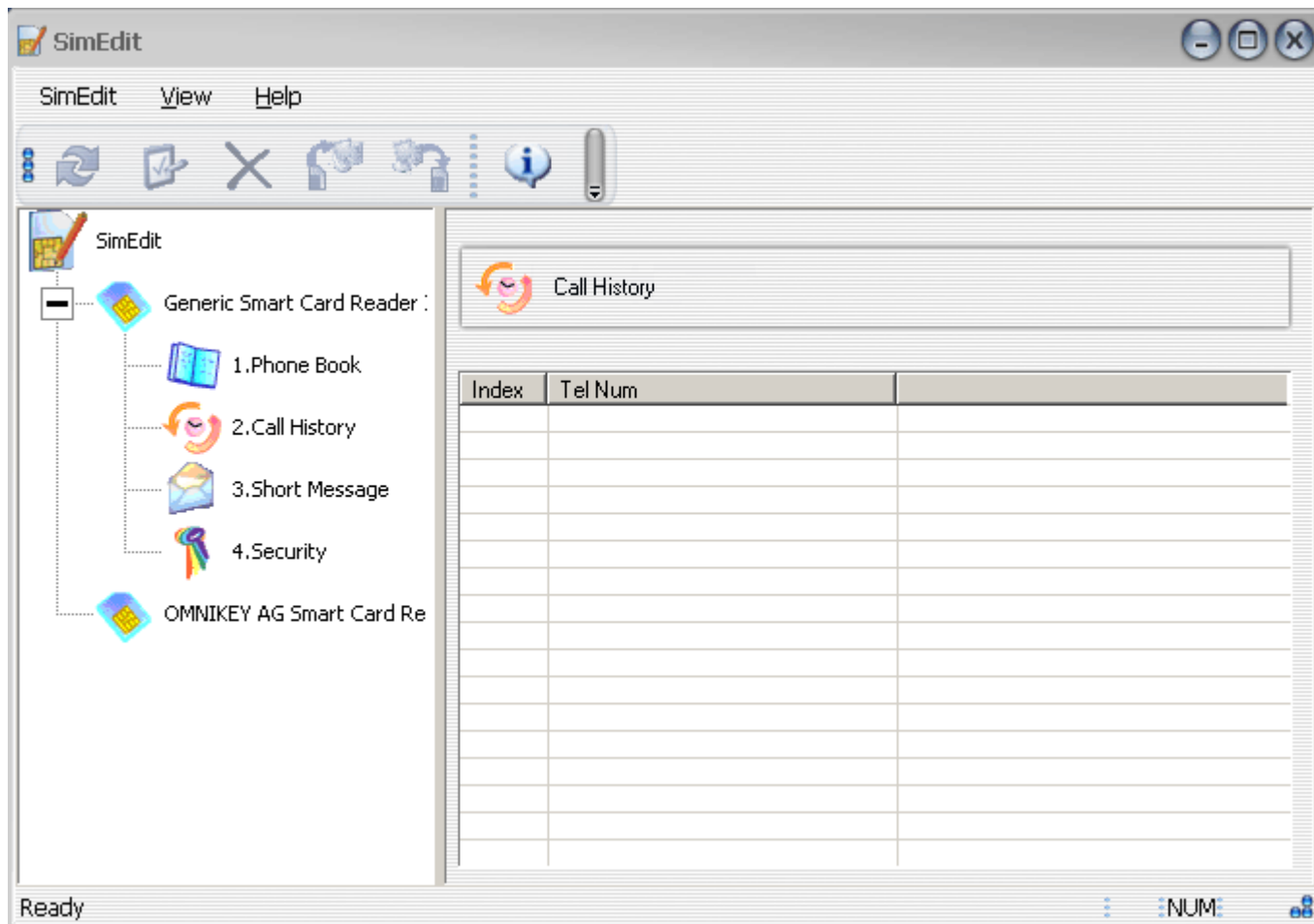
[file name to create a new storage file](#). The changed Local storage file position is remembered by the program

and load it next time.

Call History



Call history show you the Last Dialed Numbers stored in the SIM card.



The screenshot shows the SimEdit application window. The title bar reads 'SimEdit'. The menu bar includes 'SimEdit', 'View', and 'Help'. The toolbar contains icons for undo, redo, close, and other functions. On the left, a tree view shows the following structure:

- SimEdit
 - Generic Smart Card Reader :
 - 1. Phone Book
 - 2. Call History
 - 3. Short Message
 - 4. Security
 - OMNIKEY AG Smart Card Re

The main area displays 'Call History' with a table below it:

Index	Tel Num	

The status bar at the bottom shows 'Ready' on the left and ': NUM:' on the right.

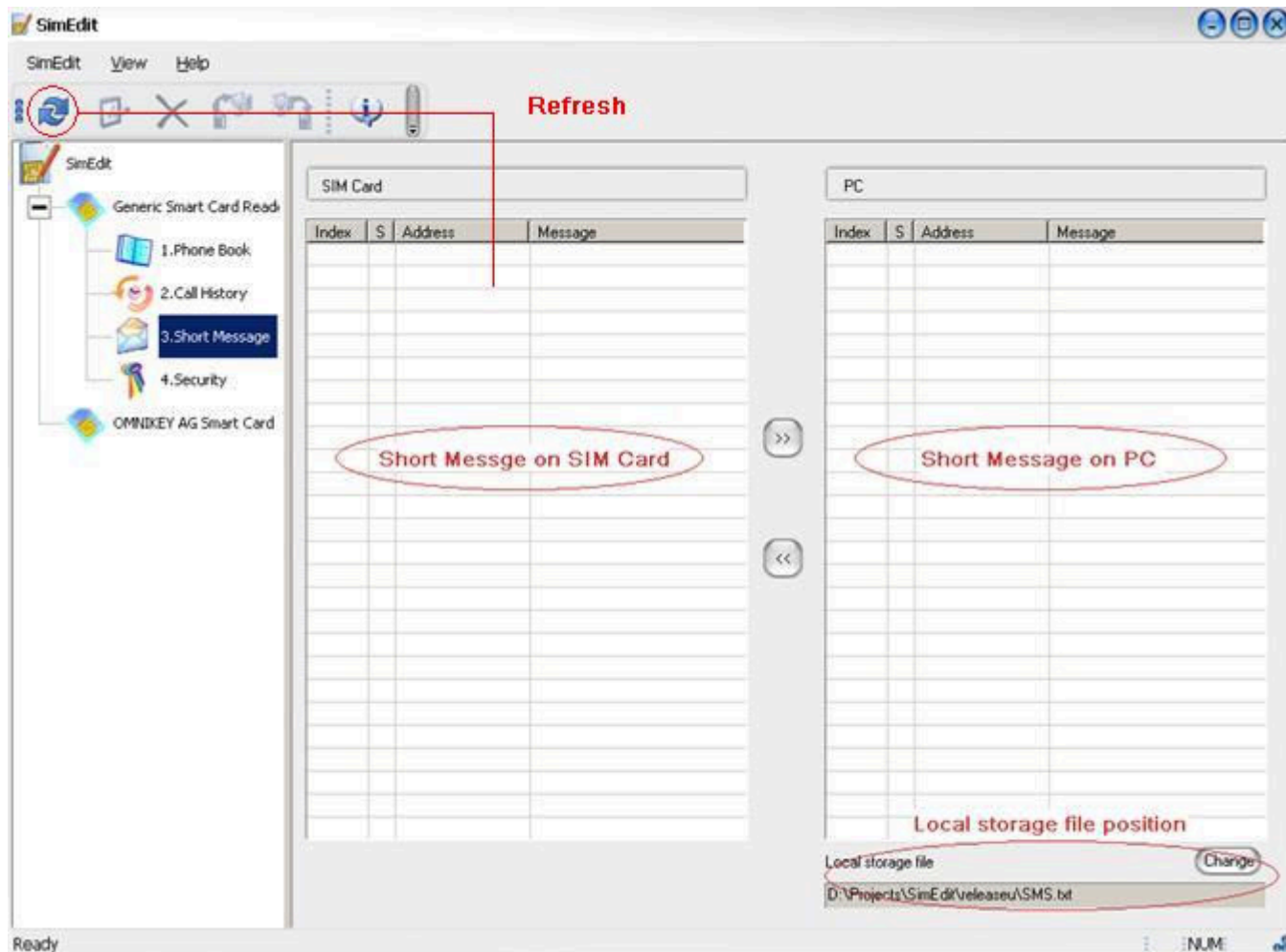
The information on this page is read only, so there is no action related with this page.

Short Message



The Short Message page looks similar with Phonebook page, it also has three parts:
Phonebook on SIM card, Phonebook on PC, Local storage file position.

After you open a SIM card and navigate to the Short Message page from function list on the left, you will see the picture below:



Short Message on SIM Card:

Here you can see a list of short message entries on the SIM card. Initially there is no data in this list until you ask

the program to load data from SIM card by click Refresh button on the toolbar. Then the program will fill the

list with data read from the SIM card.



Use Refresh button to load data from SIM card.

Short Message on PC:

This is a list of short message entries that stored locally on the PC. The storage position is specified by the

Local storage file position shown under the list. And the list is initialized immediately when you open a

SIM card. The program fills this list with data stored in the **Local storage file**.

Note: This list is shared by all opened SIM card, which means if you look at the Short Message page of

different card, you will find the contents of short message on PC are the same. Modification on one page

will affect all pages. You can make use of this feature to share data between cards, copy data between them.

Local storage file position:

In this part, you can see and change the local storage file position. By default, the program sets this position

to the same directory which the program itself resides. You can change this position as you wish by press

the **Change** button, and [select an old storage file to load the short message data stored in that file](#), or [type a new](#)

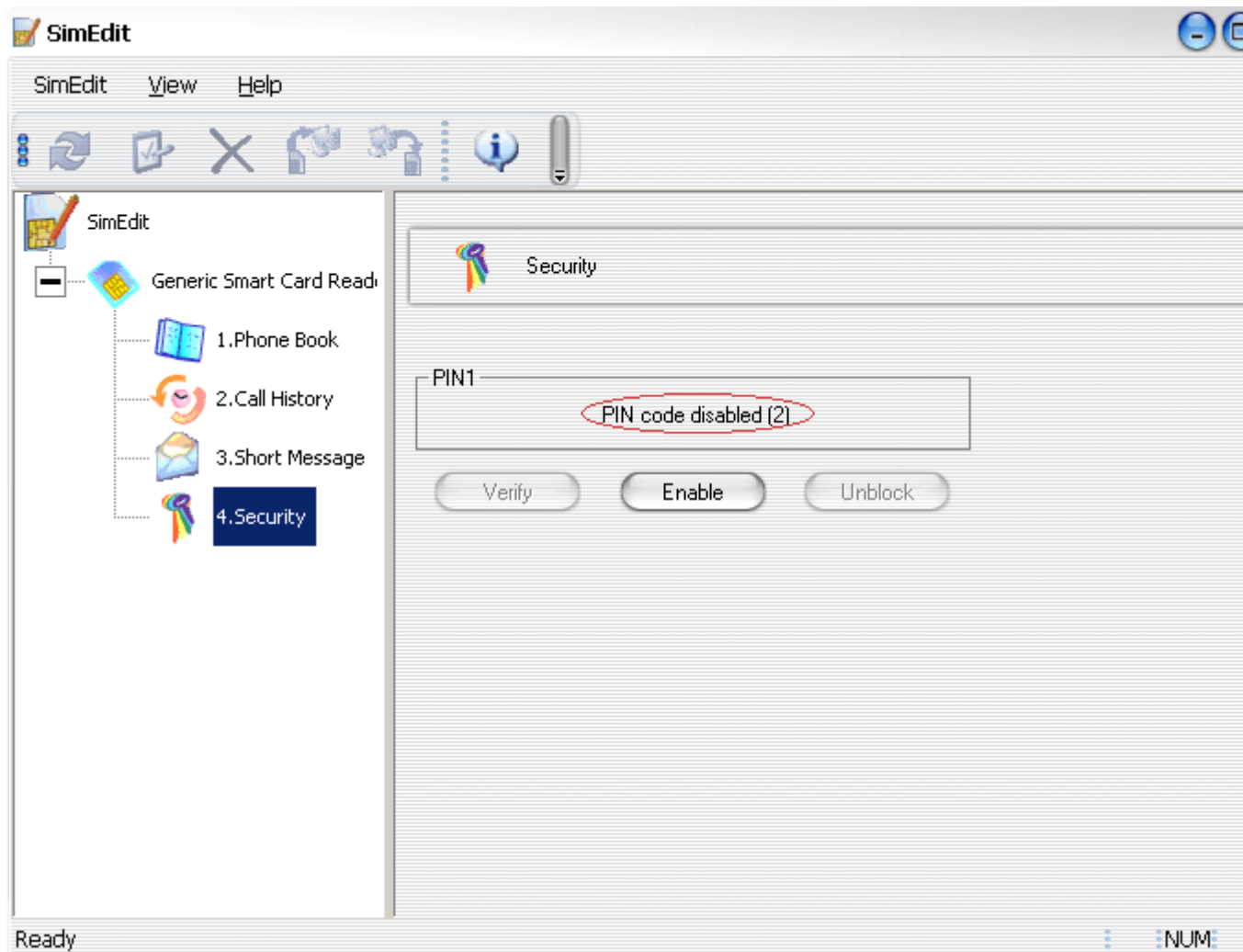
[file name to create a new storage file](#). The changed Local storage file position is remembered by the program

and load it next time.

Security



In this page, you are able to see the current status of the security setting of the SIM card.
And you can also change these settings.



PIN1 status:

For the first thing, this page shows you the current status of the PIN1 code.

Possible statuses are:

- ◆ Enabled (n) - Security is enabled. You have to provide correct PIN1 code to access private data on the SIM card.
And you have n (≤ 3) retries left to disable security verification.
- ◆ Disabled (n) - Security is disabled. You can access private data on the SIM card without verification.
And you have n (≤ 3) retries left to enable security verification.

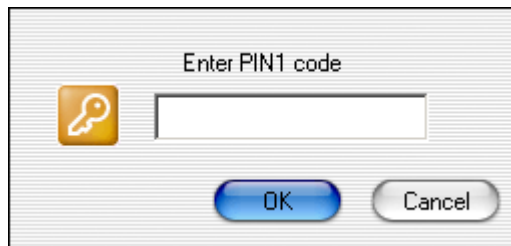
- ◆ Blocked (n) - No retries left, so the card is blocked. You have to unlock the SIM card in order to access any data on the SIM card. See below the find out how to **unblock** SIM card.

Enter PIN dialog:

If the security is enabled on a SIM card, and you try to access private data or execute protected action, you will be asked to

provide the PIN1 code to verify you have the proper permission to do that. So you will see the following dialog,

just enter the PIN1 code and press OK, or give up the action by press Cancel.



Note: You have only 3 chances to enter the correct PIN1 code, so be careful when you type. And another thing you need to

know is, you'd better pay special attention on the PIN1 status before you enter any PIN1 code. WHY? Because the SIM

card may have already been provided the wrong PIN1 code last time it was used by someone, so maybe there is less than 3

chances for you to try. The PIN1 status will tell you how many chances are left.

Enable / Disable:

This is straight forward. This button is used to enable/disable the security verification of the SIM card. Both of the actions need

you to provide the correct PIN1 code.

Verify:

If the security verification is enabled, you will have to provide the PIN1 code to the SIM card to verify yourself.

This is the place you can do the verification. Press this button, you will see an **Enter PIN1 dialog**.

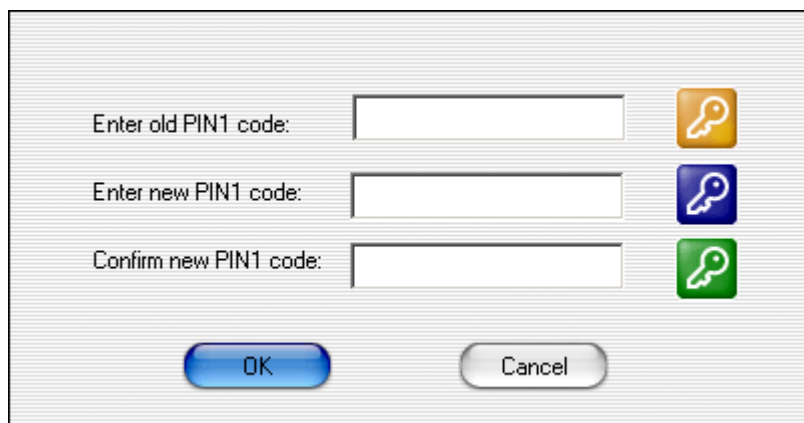
Startup verification – When you open a SIM card that has security verification enabled, you will be asked to provide the

PIN1 code at the time the card is just opened. You can enter PIN1 code there. If in case you don't enter PIN1 code there,

you can do this later in the Security page by press the **Verify** button.

Change:

You can change PIN1 code only if the security is enabled. Then you can see a button named **Change**. Press this button, you will see the following dialog, just fill in the field and press OK. Note that enter wrong old PIN1 code will also deduce the retry times.



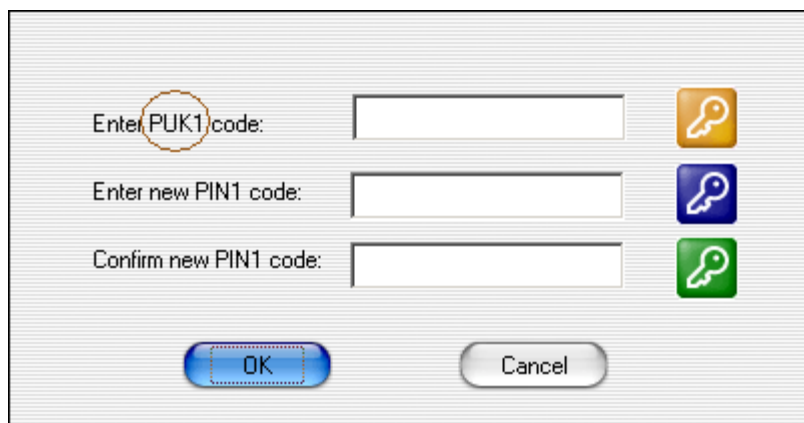
A dialog box for changing the PIN1 code. It contains three input fields: 'Enter old PIN1 code:', 'Enter new PIN1 code:', and 'Confirm new PIN1 code:'. Each field has a corresponding key icon to its right: a yellow key for the old PIN, a blue key for the new PIN, and a green key for the confirmation. At the bottom, there are two buttons: 'OK' and 'Cancel'.

Unblock:

In some cases you failed to provide correct PIN1 code, and there is no chances left to retry, the SIM card is blocked.

Then you have to unblock the SIM card use this function, otherwise you can access no data on that SIM card.

Press on the Unblock button, you will see the following dialog, very similar with Change PIN dialog:



A dialog box for unblocking the SIM card. It contains three input fields: 'Enter PUK1 code:', 'Enter new PIN1 code:', and 'Confirm new PIN1 code:'. The 'Enter PUK1 code:' label is circled in red. Each field has a corresponding key icon to its right: a yellow key for the PUK1 code, a blue key for the new PIN, and a green key for the confirmation. At the bottom, there are two buttons: 'OK' and 'Cancel'.

Note the first thing you have to provide is the PUK1 code. **This action is dangerous, if you didn't provide the correct**

PUK1 code for 10 times, your SIM card will be blocked for ever. If you don't know what you are doing, we suggest

you don't do anything but press Cancel, and contact you card provider on how to unblock your SIM card.

Howto



[How to open a card ?](#)

[How to read data from card ?](#)

[How to edit a phonebook/short message entry ?](#)

[How to delete an entry ?](#)

[How to change the local storage file ?](#)

[How to create a backup on PC ?](#)

[How to enable/disable security verification \(PIN1\) ?](#)

[How to change PIN1 code ?](#)

[How to unblock PIN1 code ?](#)