

# TEK-SCOPE PLUS FHD VIDEO INSPECTION SYSTEM, ESD SAFE

Ideal-tek's TEK-SCOPE PLUS auto focus FHD camera provides optical magnification of 46x (27" monitor), and digital magnification up to 460x (92x recommended - 27" monitor). TEK-SCOPE PLUS produces high quality distortion free up to 1080p FHD images with no delay and with excellent depth of field.

LED lights give users shadow-free illumination. The large 310 mm working distance enables inspection of a wide variety of objects. TEK-SCOPE PLUS has to be connected to a monitor.\*

## DisplayPort Output: Live-streaming images on your Monitor (FHD 1920x1080)

Use the remote control to zoom in and out, turn auto focus on or off, fine tune your focus, and much more all with a touch of a button. Simply connect the DisplayPort cable and run.

## Save your images directly on USB stick

Snap shot mode. No computer needed. Just connect a USB stick to your TEK-SCOPE PLUS and press MODE button for few seconds on the remote.

## USB Output: Live-streaming images on your PC (FHD 1920x1080)

Use the software toolbar to draw, take measurements, make image comparison and more. The software is preinstalled on the included USB flash drive or can be downloaded from [www.ideal-tek.com](http://www.ideal-tek.com). No drivers, no product keys necessary, simply install and run.

## Ethernet Connection

Ethernet connection enables simultaneous screen sharing using IP address.



\* Monitor not included

### HARDWARE SPECS

|                       |                               |
|-----------------------|-------------------------------|
| Optical Magnification | 46x optical - 27" Monitor     |
| Frame rate            | 60 fps                        |
| Working distance      | 310 mm                        |
| Outputs               | DisplayPort / HDMI / mini USB |
| Lighting              | built-in angled LED           |
| Weight                | 4,5 kg                        |
| Focus                 | Auto/Manual                   |
| Ethernet              | Yes                           |
| ESD safe              | Yes                           |

### MONITOR USE

|                       |                              |
|-----------------------|------------------------------|
| Resolution            | 1920x1080 (Full HD)          |
| Monitor Size          | Optional                     |
| Monitor format detect | no                           |
| Image capture         | directly on USB memory stick |

### COMPUTER and SOFTWARE

|                       |                     |
|-----------------------|---------------------|
| Resolution            | 1920x1080 (Full HD) |
| Operating system      | Windows 10          |
| Measurement functions | Yes                 |

## APPLICATIONS

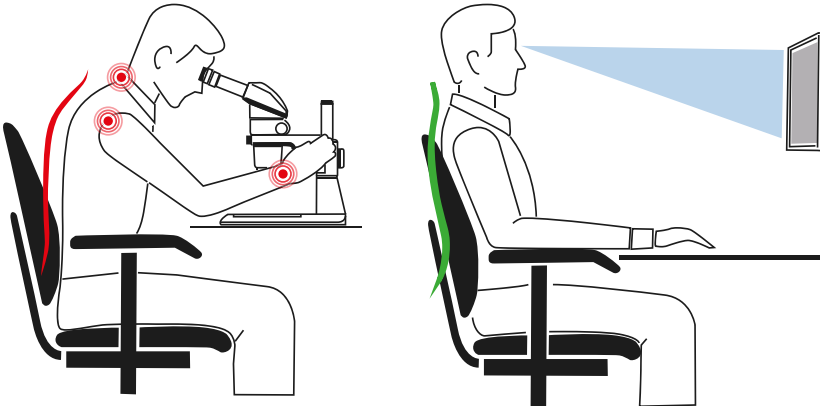
- MEDICAL DEVICE quality inspection and maintenance
- ELECTRONICS visual inspection of printed circuit boards
- AUTOMOTIVE control, rework
- ENGINEERING inspection of metal parts, cutting tools
- MEDICAL lab
- PHARMACEUTICALS lab
- AVIATION control, rework
- SECURITY passports control
- FORENSICS
- AGRICULTURAL analysis of seeds and grains
- and several more areas



## ERGONOMICS - no more neck pain, back pain or eye strain

Ergonomics plays an important role in employee productivity, stress level and overall job satisfaction.

The most vulnerable places in the body when using a standard microscope are the spine, shoulders and the neck muscles.



Standard Microscope

TEK-SCOPE PLUS

| BODY LOCATION       | EMPLOYEE PERCENTAGE |
|---------------------|---------------------|
| Neck                | 50-60               |
| Shoulders           | 65-70               |
| <b>Back (Total)</b> | <b>70-80</b>        |
| Lower Back          | 65-70               |
| Lower Arms          | 65-70               |
| Wrists              | 40-60               |
| Hands and Fingers   | 40-50               |
| Legs and Feet       | 20-35               |
| Eyestrain           | 20-50               |
| <b>Headaches</b>    | <b>60-80</b>        |

*Percentage of medical problems reported by microscope operators*

Ergonomically designed workplaces and products are essential for a workers wellbeing. Microscopy workstations are a high strain work area. TEK-SCOPE PLUS promotes correct posture thereby reducing and eliminating workplace related stress issues and injuries.

## MAIN TEK-SCOPE PLUS ADVANTAGES

- Less physical stress than binocular microscopes
- User friendly system
- Longer working distances no risk of board contact. Sufficient clearance for assembly, repair and rework
- Auto focus frees hands and allows quick inspection of objects at different heights and magnifications
- Larger depth of field for easier and quicker work
- Remote control of magnification, focus, brightness, etc
- Save images directly on USB stick, no PC needed
- Ethernet connection to share screens simultaneously

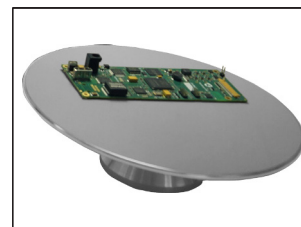
| COMPARED TO STEREO MICROSCOPES |                  |                   |
|--------------------------------|------------------|-------------------|
|                                | TEK-SCOPE PLUS   | STEREO MICROSCOPE |
| Ergonomics                     | <b>Excellent</b> | Poor              |
| Working distance               | <b>Excellent</b> | Good              |
| Depth of field                 | <b>Excellent</b> | Good              |
| Field of view                  | <b>Excellent</b> | Good              |

## ACCESSORIES

TEK-SCOPE PLUS accessories offer added convenience. For more information visit [ideal-tek.com](http://ideal-tek.com)



**TEK-XY**  
Inspection table  
Precision x-y gliding stage  
ESD SAFE



**TEK-TILT-PLUS**  
360° Inspection table and 4D lens  
Inspection from any angle  
ESD SAFE

For detailed information, read the complete user manual

## FoV WITH 3D LENS (27" monitor)

| MAGNIFICATION | FIELD OF VIEW (X) | FIELD OF VIEW (Y) |
|---------------|-------------------|-------------------|
| 1.5x          | 370 mm            | 215 mm            |
| 2x            | 285 mm            | 165 mm            |
| 3x            | 190 mm            | 110 mm            |
| 5x            | 115 mm            | 65 mm             |
| 10x           | 58 mm             | 33 mm             |
| 20x           | 29 mm             | 16.5 mm           |
| 30x           | 19 mm             | 10.5 mm           |
| 40x           | 14 mm             | 8 mm              |
| 45x           | 12.5 mm           | 7 mm              |
| Digital Zoom  |                   |                   |
| 50x           | 11.5 mm           | 6.5 mm            |
| 60x           | 9.8 mm            | 5.5 mm            |
| 70x           | 8.5 mm            | 4.5 mm            |
| 80x           | 7 mm              | 4 mm              |
| 90x           | 6.5 mm            | 3.5 mm            |
| 100x          | 5.8 mm            | 3.3 mm            |
| 200x          | 3 mm              | 1.5 mm            |
| 300x          | 2 mm              | 1 mm              |