

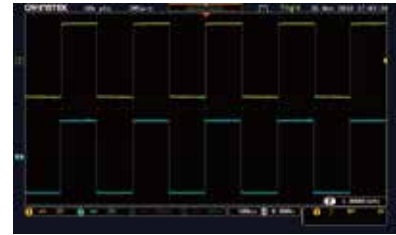
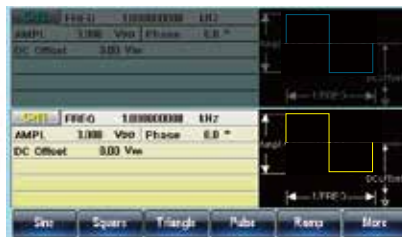


Phase Shift

AFG-30XX: Dual channel

GW INSTEK

Simply Reliable

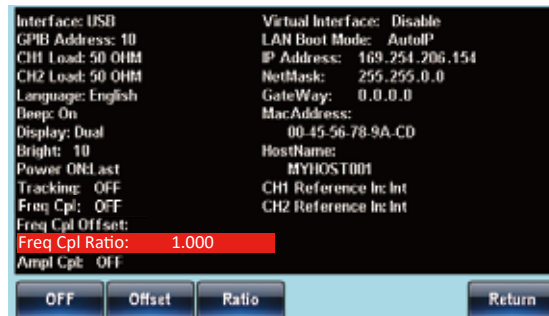
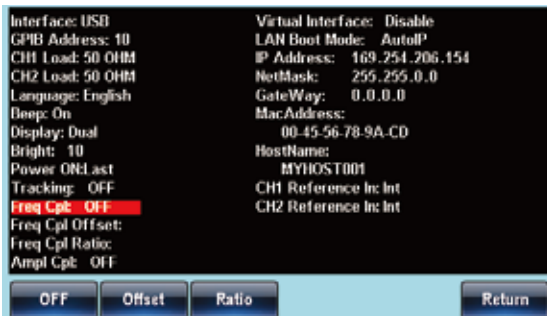


The AFG - 3022/3032 can output the following signals.

1. By changing the frequency and amplitude of one channel you can change the other signal in the same way.
2. The signal phase of CH1 and CH2 can be varied.

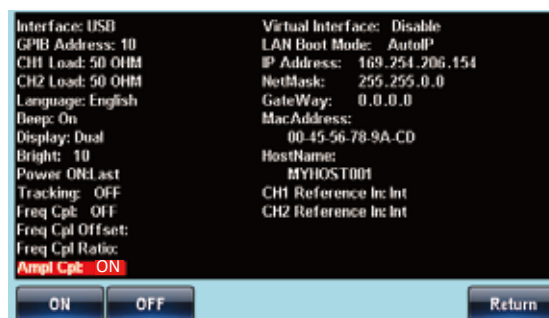
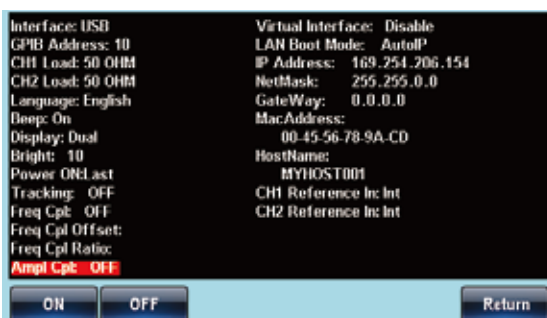
Frequency Coupling

Frequency coupling sets the frequency of the unselected channel as a frequency offset from the selected channel or as a ratio of the frequency of the selected channel.



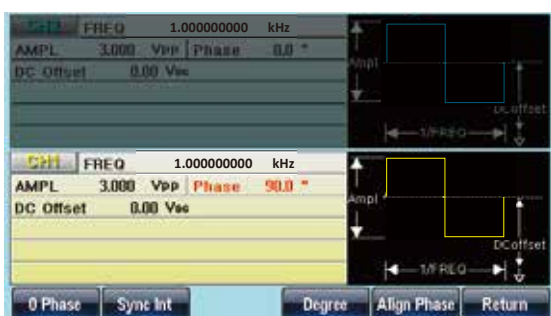
Amplitude Coupling

Amplitude coupling couples the amplitude of one channel to the other channel. When the amplitude settings for one channel are changed, those same settings are automatically reflected in the other channel.



Channel Phase Settings

The phase settings allow you to configure the start phase of a channel to one of 4 pre-set phase settings:



- 0 Phase**
- Sync Int**
- Degree**
- Align Phase**

Quick set the phase of a channel to 0°.

Synchronizes the phase of both channels and sets the phase to 0°.

Sets the phase of the selected channel.

Aligns the timebase of both channels but doesn't change the

phase deviation of the channels. In other words it re-calibrates the

phase difference between both of the channels.



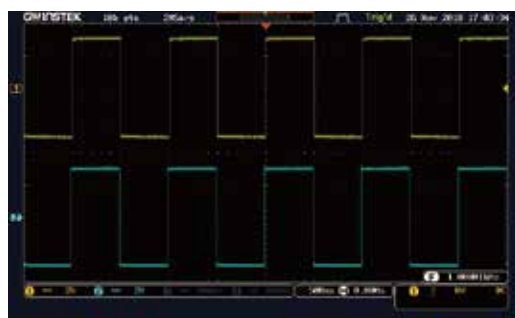
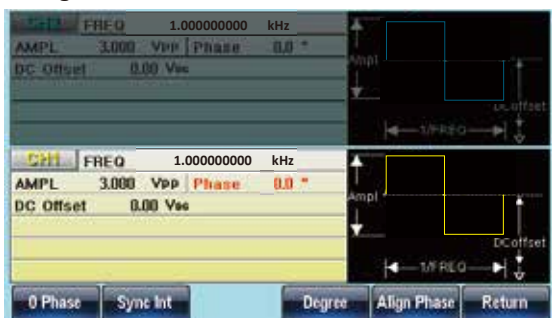
AFG-30XX: Dual channel

Press the CH1 or CH2 key.

Press F5 (Phase).

To select F4 (Degree)

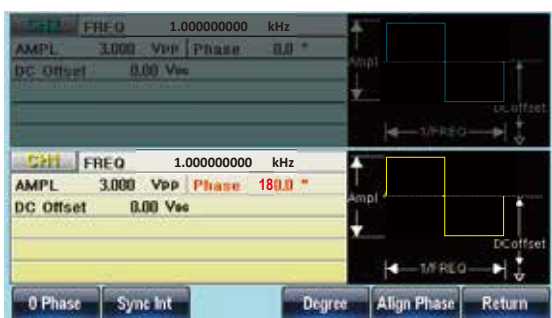
0 degree



90 degree



180 degree



Frequency 1kHz => 2kHz

