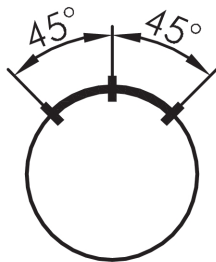
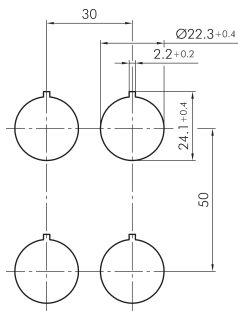
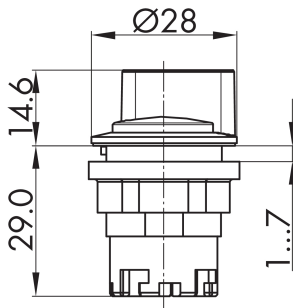




Illuminated selector head, maintained, charcoal JRWBL

Description: inclusive four small transparent colour plates in red, yellow, green and blue

Category: Selector Switches (momentary/maintained)
 Series: RONDEX-JUWEL®
 Panel cut-out: Ø 22.3 mm
 Protection class: II (protective insulation)
 Degree of protection: IP65
 Switching function: maintained action
 Illumination: yes
 With labelling option: no
 Front bezel: charcoal
 Shape: round



reddot award 2018
winner

Legend

I = Switching position >=
Spring return