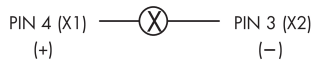
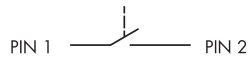
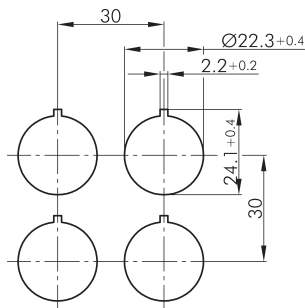
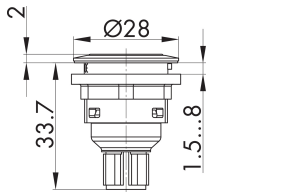




Illuminated pushbutton with 4-pole M12 connector SSWTLI_C005

Description: with integrated 4-pole M12 connector, A-coded incl. white LED

Category:	Pushbuttons
Series:	SHORTRON® connect
Panel cut-out:	Ø 22.3 mm
Protection class:	II (protective insulation)
Degree of protection:	IP65 / IP67
Switching function:	momentary action
Travel:	2.3 mm
Illumination:	yes
With labelling option:	yes
Contact equipment:	1NO
Connection type:	M12 4 poles
Front bezel	black
Shape:	round
Lamp socket:	none, with integrated 3 mm LED white



0 1 2

PIN 1/ PIN 2

