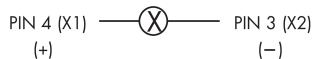
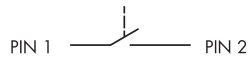
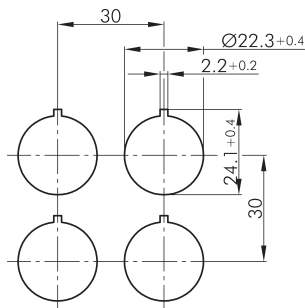
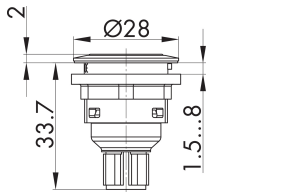




Pushbutton with ring illumination and 4-pole M12 connector SSWTLRBI_C005

Description: with integrated 4-pole M12 connector, A-coded incl. lens and white LED

Category: Pushbuttons
Series: SHORTRON® connect
Panel cut-out: Ø 22.3 mm
Protection class: II (protective insulation)
Degree of protection: IP65 / IP67
Switching function: momentary action
Travel: 2.3 mm
Illumination: yes
With labelling option: no
Contact equipment: 1NO
Connection type: M12 4 poles
Front bezel: black
Illuminated ring: blue
Switching capacity: 250 V, 6(4) A, AC
Shape: round



0 1 2

PIN 1/ PIN 2

