

Copyright ©2020 GDU-Tech Co., Ltd All Rights Reserved.
www.gdu-tech.com



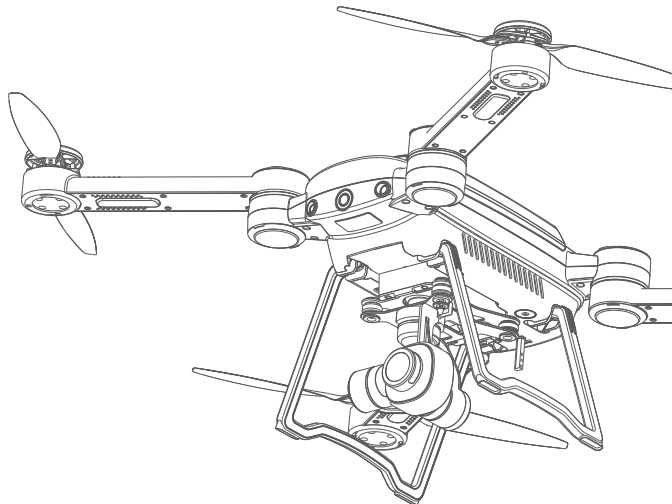
APP

If you have any questions about this document , please contact GDU after-sales center (+86 400-040-0266).

GDU SAGA

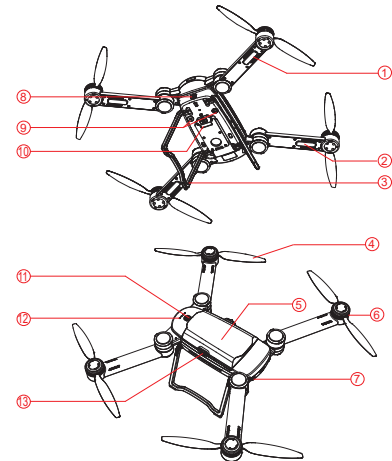
QUICK START GUIDE

V3.0



Get to Know The Aircraft

The aircraft's arms, propellers, and tripod are all foldable. The fully-adaptable aircraft platform can be equipped with 4K camera, 4K*30x automatic zoom camera, infrared camera, etc. The large- capacity Lithium battery gives the aircraft a maximum flight time of 35 minutes. The aircraft is equipped with an advanced intelligent vision system, which supports intelligent obstacle avoidance, visual tracking, and other advanced functions.

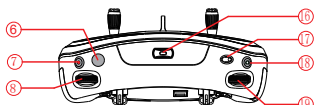
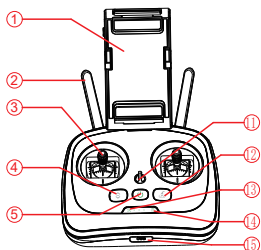


- | | |
|---------------------------------|---|
| 1. Aircraft Rear LED Indicator | 8. Parameter /Data Adjustment Interface |
| 2. Aircraft Front LED Indicator | 9. Downward Vision System |
| 3. Tripod | 10. Gimbal Camera Mount Interface |
| 4. Propellers | 11. Power Button |
| 5. Battery | 12. LED Battery Level Indicator |
| 6. Motor | 13. Battery lock |
| 7. Forward Vision System | |

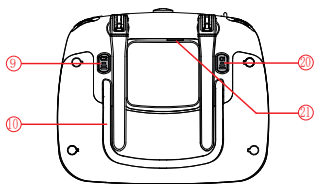
Remote Control

The remote control utilizes an advanced frequency hopping wireless communication system, making the aircraft and camera easy to operate and configure from within a maximum communication distance of 7km. The remote control support secures the mobile device and, by using the App, users can watch high-definition, real-time images on their mobile devices.

1. Mobile Device Support
2. Antenna
3. Control Sticks
4. One-Click Take-off
5. Power Button & Remote Control Power Status Indicator
6. Gimbal Reset Button
7. Record Button
8. Gimbal Pitch Dial
9. Customizable Button C2
10. Handle



11. Strap Hole
12. RTH (Return to Home) Button
13. Aircraft Battery Level Indicator
14. Remote Control Signal Strength Indicator
15. Micro-USB (Charge port)
16. Holder lock
17. Flight Mode Switch
18. Shutter Button
19. Gimbal Yaw Dial
20. Customizable Button C1
21. USB Data Port



- ★ The number 19 is camera zoom when mounting a 10x or 30x zoom camera gimbal.
- ★ The maximum flight time is tested under experimental conditions to the 12000mAh battery and may vary depending on environmental and flight conditions.

- ★ The remote control can reach its maximum transmission distance (FCC standard) in a wide open area with no electro-Magnetic interference in good weather conditions at a height of 120m (400 feet).

Specifications

Aircraft

Weight	2400 g (without load)
Max load	1000 g
Max take-off weight	3400 g
Max Ascent Speed	5 m/s (Sport mode)
Max Descent Speed	3 m/s
Max Horizontal Speed	15m/s (Sport mode, without wind)
Max Flight Altitude	3500 m (11482 feet)
Max Hovering Time	35 minutes(without wind)
Operating Temperature	-10 °C to 50 °C
Satellite Positioning system	GPS/GLONASS (dual modules)

Gimbal

Detachable Mount Gimbal Type	4K Gimbal Camera, 4K×30X Zoom Gimbal Camera, Infrared Gimbal Camera
------------------------------	---

Forward Vision System

Sensing range	0.5 to 15 m
Operating Environment	Obstacle avoidance system with clear texture and adequate lighting (lux >15 Common room lights)

Downward Vision System

Velocity Range	≤ 10m/S (8m above ground, adequate lighting)
----------------	---

Hovering Range	0.3 to 8 m
Operating Environment	Ground with clear texture and adequate lighting (lux>15 Common room lights)

Remote Control

Operating Frequency	2.4 GHz/5.8 GHz
Max Transmission Distance	7 KM*
Operating Temperature	-10°C to 40°C
Battery	5000 mAh
Working Voltage	8.4 V
Supported Connector Port	USB Data Port

Charger

Voltage	16.8 V
Rated Power	68 W

Intelligent Battery

Capacity	12000 mAh
Rated Voltage	15.2V
Battery Type	LiPo 4S
Energy	182.4Wh
Net Weight	Approx 1078 g

★ The remote control can reach its maximum transmission distance (FCC standard) in a wide open area with no electro-magnetic interference in good weather conditions at a height of 120m (400 feet).

Notice:

In order to avoid property loss or personal injury, please read through the following documentation carefully before using the drone for the first time:

Warnings:

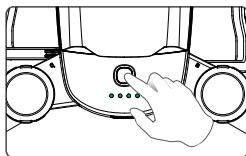
- It is prohibited for those who are under 18 to use this product.
- It is prohibited to use this product in heavily populated areas.
- It is prohibited to use this product in legally restricted areas.
- Please put the product out of children's reach.
- It is prohibited to use this product when you are tired, distracted, or under the influence of anything that could impair judgment and control of aircraft.
- Please fly the drone in a wide open area in good weather conditions.
- All the images shown in this document are for reference only. Purchased product may vary visually.



1. Turning the Intelligent Battery On / Off

Turning the Intelligent Battery of Aircraft On/Off:

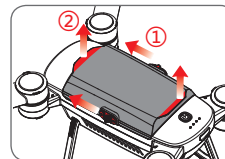
Press the power button once (without holding it down), then press the power button and hold it for 2 seconds to turn on the aircraft's power supply; repeat the short press once and press and hold for another 2 seconds to turn off the aircraft's power supply.



High ● Battery Level → Low



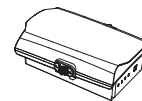
2. Charging the Battery



Remove the Aircraft Battery



Input voltage:
100~240V



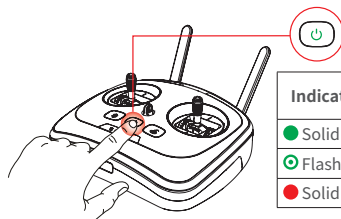
Charging time:
12000mAh Battery
within 4 hours



Charging time:
Within 2.5 hours

Turning the Remote Control's Power On/Off:

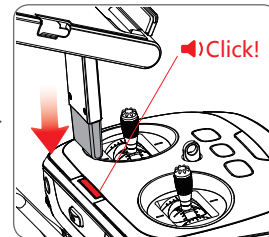
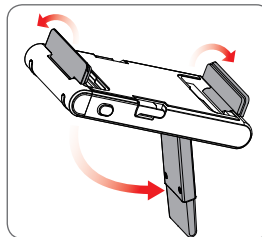
Press and hold the power button for 3 seconds to turn on the remote control, and then press and hold the power button for 3 seconds to turn off the remote control. After turning on the remote control, the power button LED light will indicate the battery level of the remote control, and the power indicator under the remote control will indicate the battery level of the aircraft.



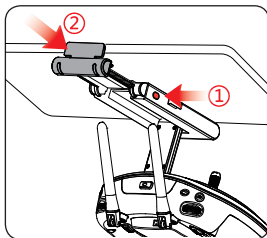
Indicator Lights	Current Power Level
● Solid Green	40%~100%
● Flashing Green	15%~40%
● Solid Red	0%~15%

3. Preparing the Remote Control

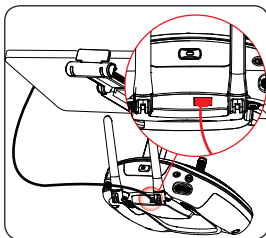
1) Insert the mobile device support vertically into the socket at the top of the remote control.



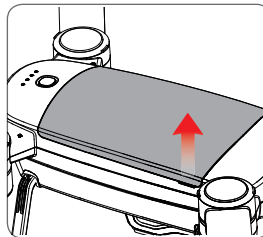
2) Open the limiter and secure the mobile device carefully.



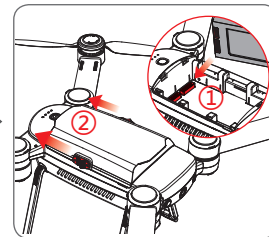
3) Use a USB cable to connect the mobile device to the remote control.



3) Remove the battery cover.



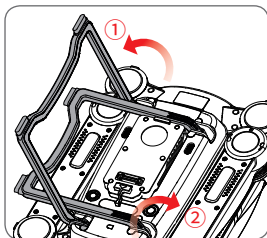
4) Insert the battery into the aircraft, and lock the buckle at both ends of the battery.



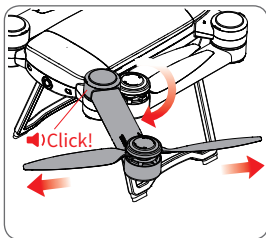
4. Preparing the Aircraft

- ★ Make sure that the tripod, arms, and blades are all in place. Check that the arms are perpendicular with the corresponding blades (type a blade or type b blade).
- ★ Please ensure that the battery and the body buckle are set in tightly and seamlessly.

1) Unfold the tripod in the proper sequence.



2) Pull the arm to the stopped position and unfold the blades.

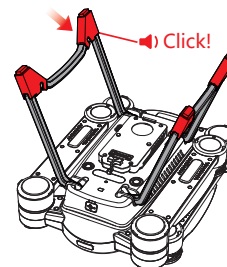


5. Preparing the Gimbal Camera

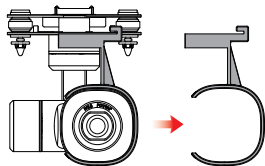
Install the gimbal camera:

- ★ Before you mount the gimbal camera, turn off the aircraft's power supply.
- ★ The gimbal camera model shown in the figure is for illustration only.

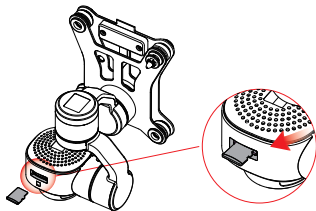
1. Please install the stands on the aircraft.



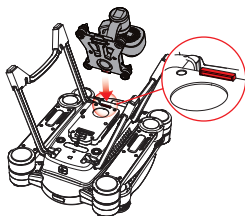
2. Please remove the lens' protective cover and the gimbal



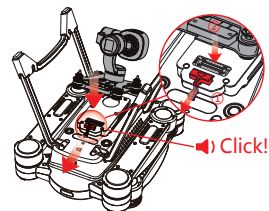
3. Please insert a Micro SD card in the place shown on the



4. Please insert the front buckle in front of the gimbal into the hole on the fixing plate.

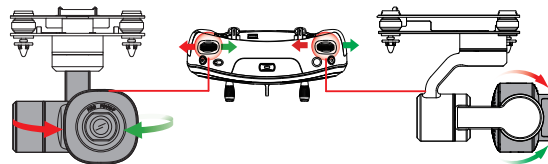


5. Please pull back the lock of the gimbal and press it tightly

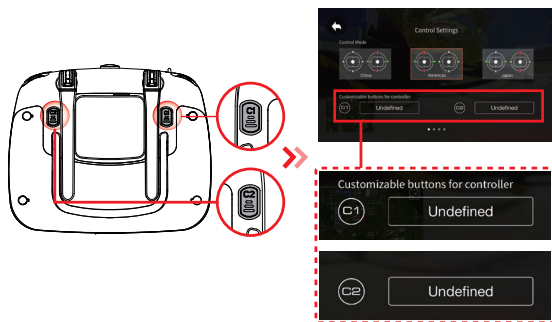
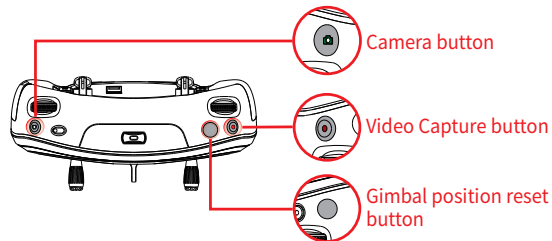


Control the Camera Gimbal:

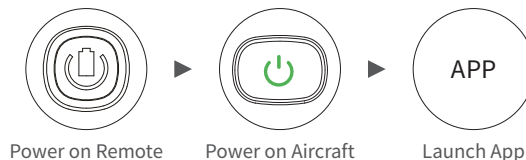
The left dial of the remote control is used for the yaw operation of the gimbal; the right dial of the remote control is used for the pitch operation of gimbal.



At the bottom of the camera are the shutter button, the gimbal reset button, and the video record button; the C1 and C2 buttons can be customized in the APP according to your needs.



6. Prepare for Take off



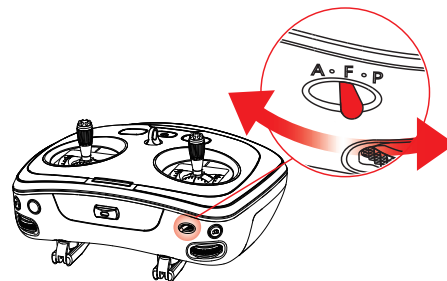
7. Magnetometer Calibration

Please calibrate the magnetometer when the aircraft is used for the first time, or the geographical area of the flight changes greatly.

1) After turning on the remote control and the aircraft, the aircraft will enter the self-check process and at this time will make beeping sounds synchronously.

Calibration Method 1:

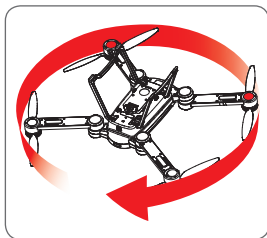
Wait for the beeping sounds to stop. Switch the remote control "flight mode switch" several times. When the aircraft status indicator light turns to solid yellow meaning the aircraft has entered the magnetometer calibration mode.



Calibration Method 2:

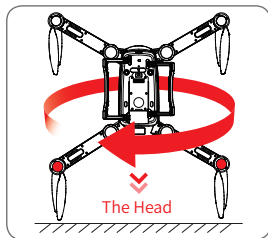
Wait for the beeping to stop, run the App, tap "start", select "General Settings" or "Good to fly", click on the "Calibrate" button, the Aircraft Status indicator light will then turn to solid yellow according to the Calibration procedure instructions of the App.

2) Please turn the machine belly up and rotate the aircraft clockwise horizontally.



Rotate the aircraft clockwise for horizontal calibration

3) Turn the nose downward and rotate the aircraft clockwise vertically.



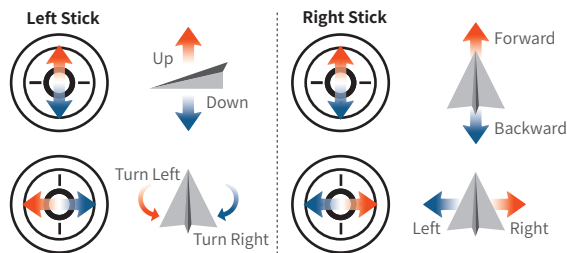
Rotate the aircraft clockwise for vertical calibration

Tail light Status Description:

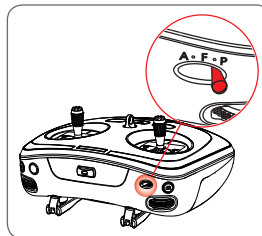
	Status Description	Head LEDs	Tail LEDs
Magnetometer Calibration	Start Calibration	● Yellow-ON	● Yellow-ON
	Unmaintained Horizontal	● Yellow-ON	⊙ Yellow-Flashing quickly
	Horizontal Calibration Success	● Yellow-ON	⊙ White-Flashing quickly
	Start the Vertical Calibration	● Yellow-ON	○ White-ON
	Vertical Calibration Success	● Red-ON	● Green-ON

8. Flight

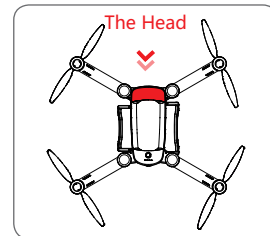
The default setting of the remote control is American mode. The left stick controls the aircraft's altitude and rotation, while the right stick controls its forward, backward, left and right movements.





1) Switch the remote control mode to "P" (GPS mode).



2) Please place the nose outwards and maintain a safe distance of 3 meters.

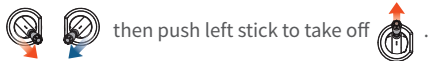


3) Take off:

① Press and hold the "One Click Launch" button 3S on the remote control  (or click the icon  on the APP), and the aircraft will take off to a height of 1.5 meters;



----- or -----

② Pull the control sticks down inwards to unlock the aircraft




Landing:

① Press the "One-Click Return Home" switch on the remote control

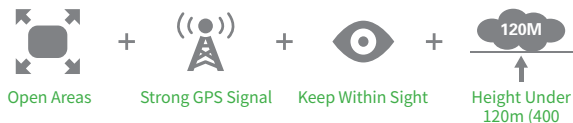
 (or click the icon  on the APP) to return the aircraft.

----- or -----

② Pull the throttle lever downwards to ground the aircraft  and wait 2 seconds for the motor to stop.

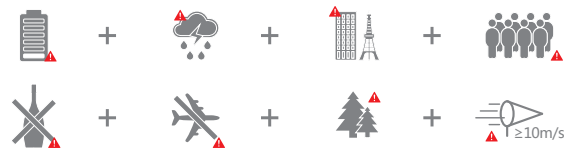
After the flight is over, please turn off the aircraft and remote control power.

9. Fly Safe



- Please fly the drone in wide-open areas with good weather and a strong GPS signal, and always keep the drone within your sight.
- Keep the height under 120m (400 feet).

 For the safety of you and others around you and the environment, it's necessary to know the No Fly Zone and basic flight guidelines. Please read the Disclaimer carefully.



- Please do not use the product if you're drunk, dizzy, or in other poor conditions;
- Please do not fly in crowded public areas.
- Please do not use the aircraft in places which are forbidden by law or authoritative departments.

Information is subject to change without notice.