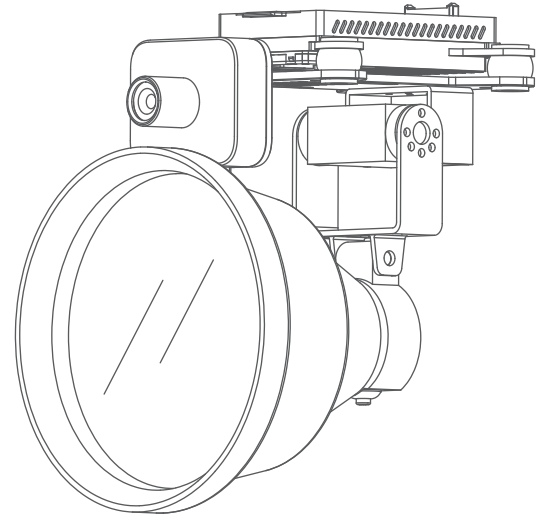


FLOODLIGHT

USER MANUAL

V1.0



If you have any questions about this document , please contact
GDU after-sales center (+86 400-040-0266).

Index

Disclaimer	1
Product features	1
Product installation.....	1
Active range	2
Supported functions	3
App control	3
Maintenance	6
Safety Instructions	7
Technical data.....	7

Disclaimer

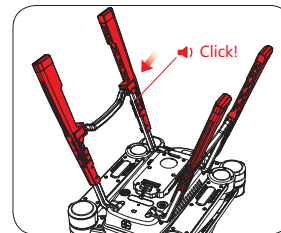
Thank you for using the products. To guarantee a quality user experience and your legal rights and safety, please carefully read this statement before using the product. Please adhere to the user guide while using the product. Improper use may cause harm to yourself and others or damage the product or other objects. Once you use the product, it means you have read and accepted the contents of this statement. GDU-Tech Co., Ltd is not responsible for any damage caused by improper use (including but not limited to: changing the product structure, dismantling the product, causing a short circuit, over heating, damage, etc.)

Product features

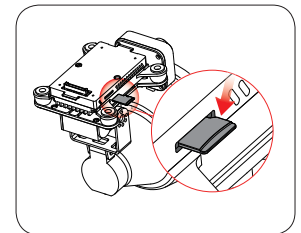
The product uses high-power LED lights mounted on the aircraft. It can be used for long-range aerial illumination at night to solve lighting issues. It can also detect the environment through the first angle view camera. Users can watch the real-time picture on their mobile devices. Applicable for night patrols, night time search and rescues, and other low lighting environments.

Product installation

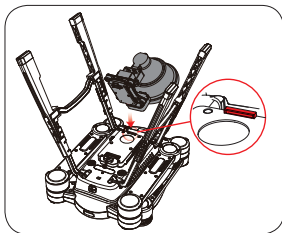
1) Please install the stands on the aircraft.



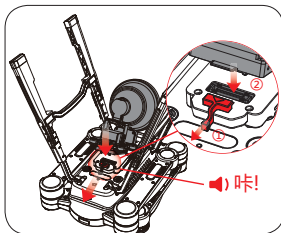
2) Please insert the Micro SD card.



3) Please insert the buckle on the front of the floodlight into the fastening plate.



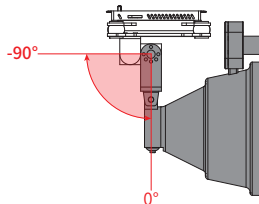
4) Please pull back the latch to secure the floodlight.



- ★ Before mounting the floodlight, please turn off aircraft power.
- ★ Do not move the aircraft when running self diagnostics.
- ★ Please insert/remove the SD card when the aircraft power is off.

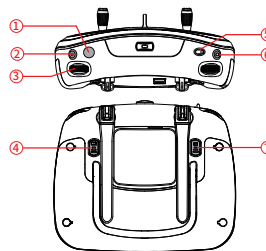
Active range

The floodlight is controlled together with the first person view camera. The pitch is -90° to 0° , and the effective range of the light is 500m.



Supported functions

Taking the remote control as an example, the first person view camera is used to take pictures and video through the camera button and the video button; the right dial controls the megaphone pitch, which is convenient for adjusting the camera shooting angle range.



1. Gimbal Reset Button
2. Record Button
3. Gimbal Pitch Dial
4. Customizable Button C2
5. Flight Mode Switch
6. Shutter Button
7. Customizable Button C1

App control

Download & Installator

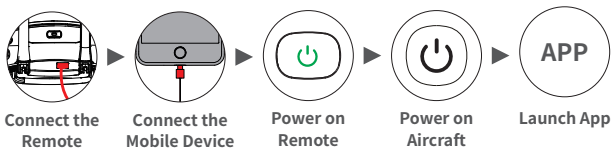
Please scan the QR code below to install the App .Use this product through the App.



- ★ App requires systems with iOS8.0 or above or Android 5.0 or above.

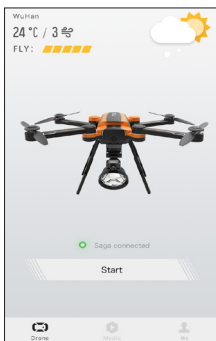
Connect to App

Use the USB cable to connect the controller to your mobile device. Turn on the controller and aircraft and start the App.



Start Up Interface

Run the App and enter the main menu. When the connection is normal, the interface will show the start up screen.



Camera Interface

Press “start” to enter camera interface.



① Display pan/tilt angle

Display current pan/tilt angle.

② Switch picture taking / video recording

Click to switch between current picture taking/video recording mode.

③ Picture taking/video recording button

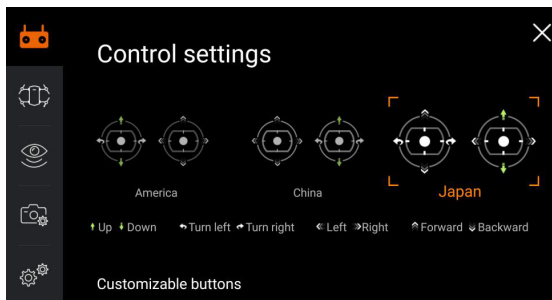
Display current functions: picture taking/video recording.

④ Camera settings

Click to control gimbal pitch

Camera Settings

Press the settings icon in the top right corner. You can choose between America, China and Japan in the settings interface. Users can customize the C1 and C2 buttons according to their habits and setting. The C1/ C2 button is used to configure floodlight switch/low beam/high beam selector、set to flash the floodlight.



★ The App interface and functions will be continuously updated. Specific details are dependent on the latest version.

Media files

The photos and videos are stored on the SD card. You can access the files through a card reader.

Maintenance

- Check if the floodlight exterior is intact. If there are any abnormalities, please contact after-sales services.
- If the floodlight is broken or the light is not shining normally, please check the floodlight and aircraft connection to see if there are any loose connections.
- Check if there are distortions, cracks, blockages, or dirt on the contact surfaces between the floodlight and aircraft.
- Check if the wiring is complete. If there are breaks or wear and tear, please contact after-sales services.
- Check the condition of the floodlight. If it is dirty, please use the specialized cleaning kit. Do not use any solvents or corrosive solutions.
- When not using the floodlight, please store it in the original box.

Safety Instructions

- People under the age of 18 are not allowed to use this product.
- Do not place the product within the reach range of children.
- When using this product together with GDU aircrafts, please strictly follow the flight and use safety instructions of GDU aircraft.
- Unauthorized disassembly or modification of the product is prohibited.
- The floodlight has a high lumen, please avoid looking directly at the lights before turning on it.
- The LED outdoor floodlight must not be exposed to extreme temperatures, strong vibrations or heavy mechanical stress.
- Never cover the LED floodlight. The surface becomes very hot. Not only is there a risk of fire, but the LED floodlight may overheat, which will destroy it.
- Handle the product with care; it can be damaged by impacts, blows, or accidental falls, even from a low height.
- If you have questions which remain unanswered by these operating instructions, contact our technical support service or other technical personnel.

Technical Data

Floodlight	
Effective range	500m
Power	18w
Maximum brightness	3000lm
Camera specifications	Sensor: 1/2.7 CMOS inch
	Field of view: horizontal: 41 ° vertical: 23°
	Photo and video resolution: 1920×1080
Angle control	Pitch: -90°~ 0°

Dimensions	100mm×142mm×154mm
Weight	Approximately 330g
Appropriate environment	Operating temperature: -20°C~ 50°C Storage temperature: -40°C~ 60°C Operating humidity: 15% ~ 90%RH (no condensation)