

Fever Screening Thermal Camera Installation & Configuration Guide



Bullet:DS-2TD2617B



Turret:DS-2TD1217B

Temperature measurement range: 30-45°C
 Working temperature: 10-35°C
 Accuracy: ±0.5°C
 Resolution:160 × 120

1 Installation-Tripod quick temporary deployment

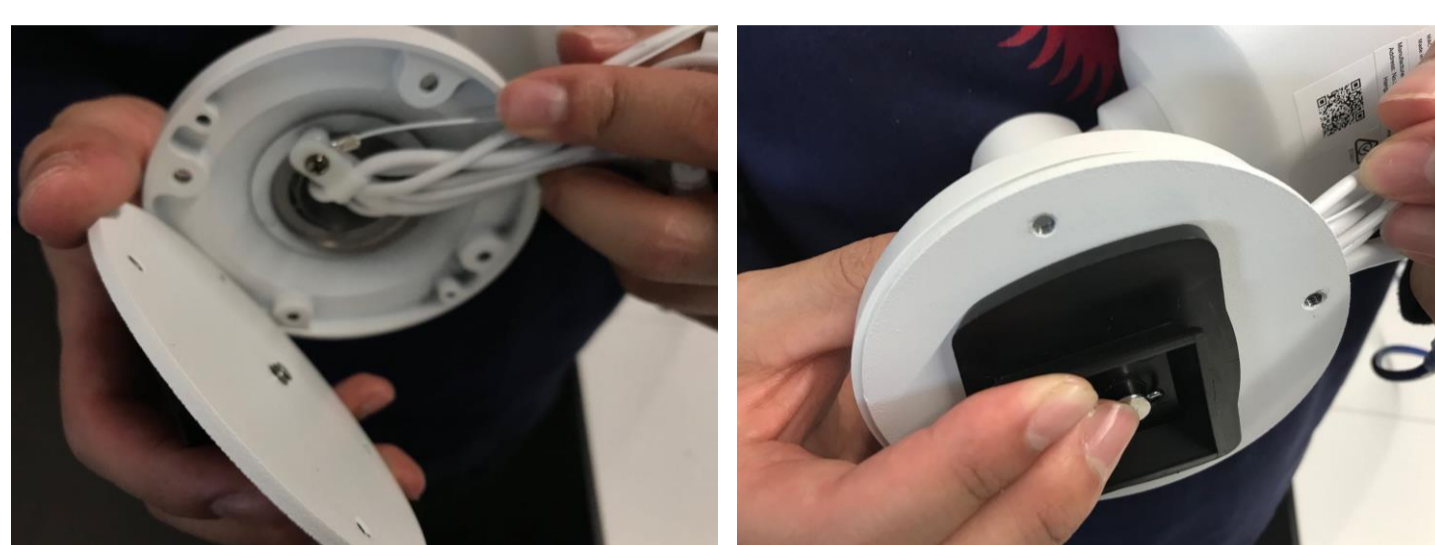


Tripod Adapter For Turret

Tripod Adapter for Bullet



A. Tripod connector fixed on the adapter



B. Fix the adapter on the camera



C. Install the camera on the tripod

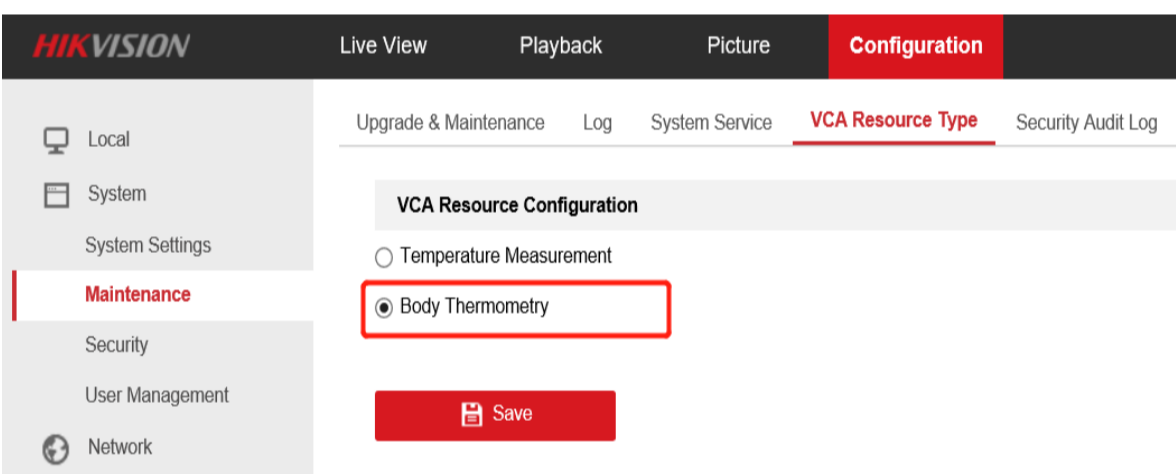


D. Installation complete

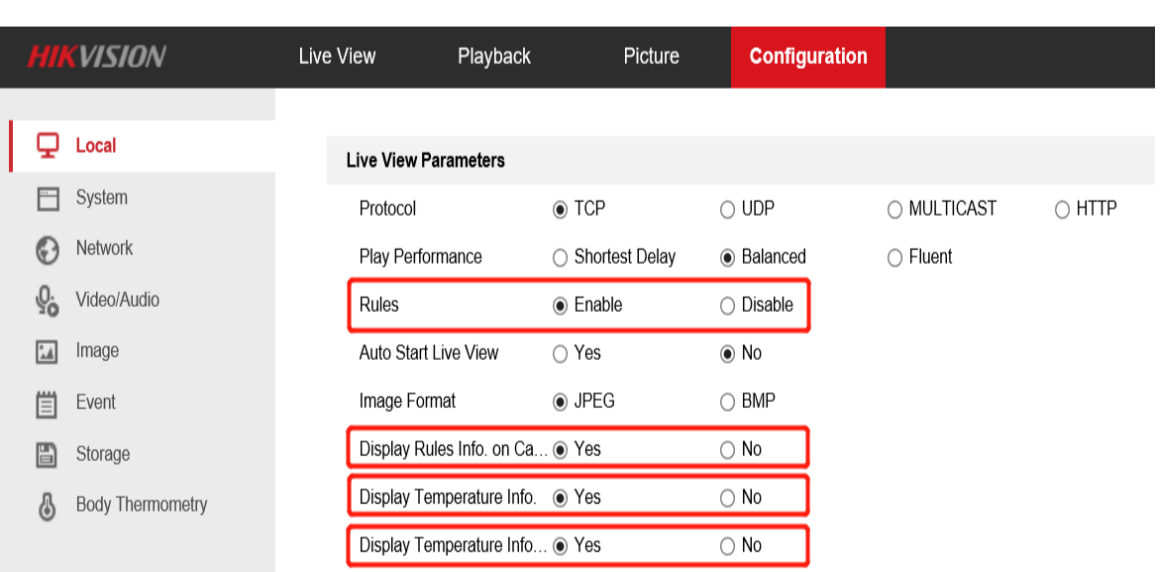
Installation Parameter Recommended		
Model	Distance (between human&camera)	
DS-2TD1217B-3/PA	0.8-1.5m	
DS-2TD2617B-3/PA		
DS-2TD1217B-6/PA	1.5-3m	
DS-2TD2617B-6/PA		
Model	Height	Elevation angle
DS-2TD1217B-3/PA	1.5m	≤20°
DS-2TD2617B-3/PA		
DS-2TD1217B-6/PA		
DS-2TD2617B-6/PA		

2 Configuration

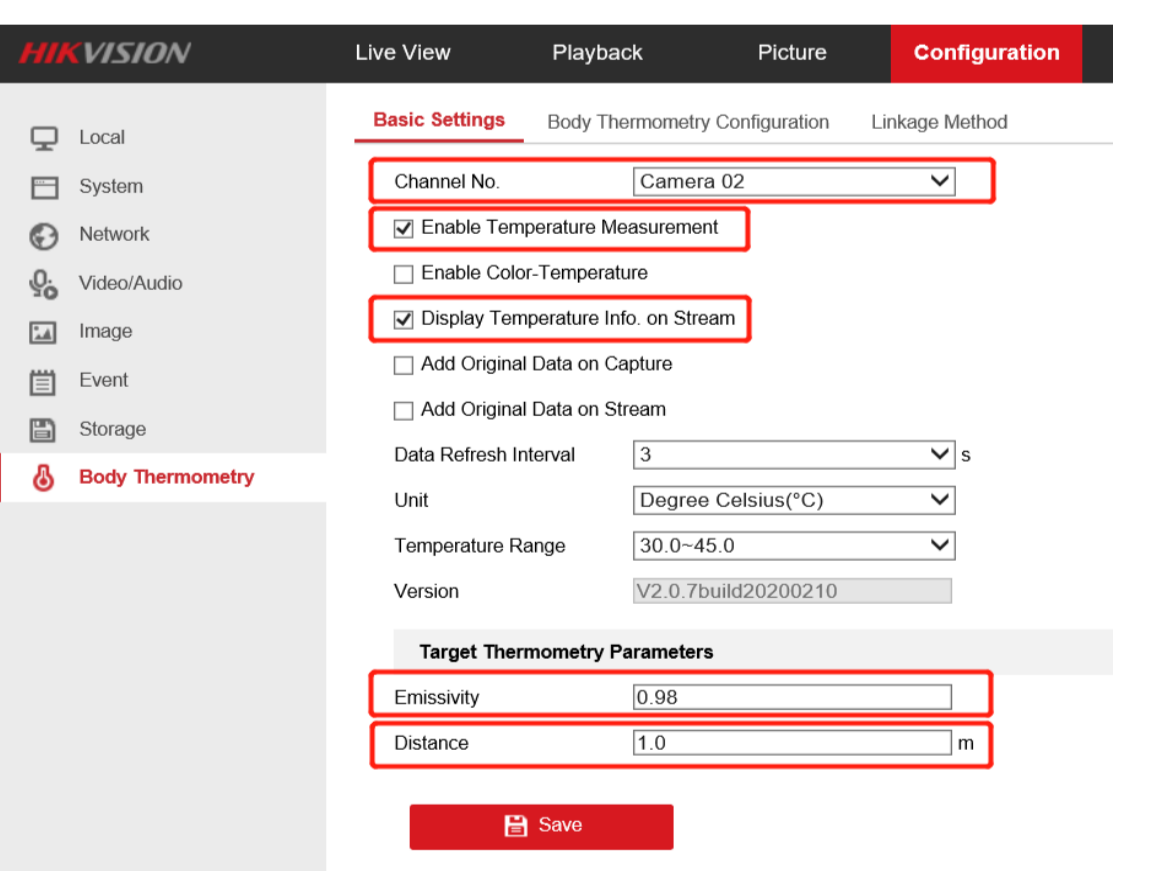
1. Select **Body Thermography** as VCA Resource Type.



2. Go to Local Configuration interface, enable and save the following settings:



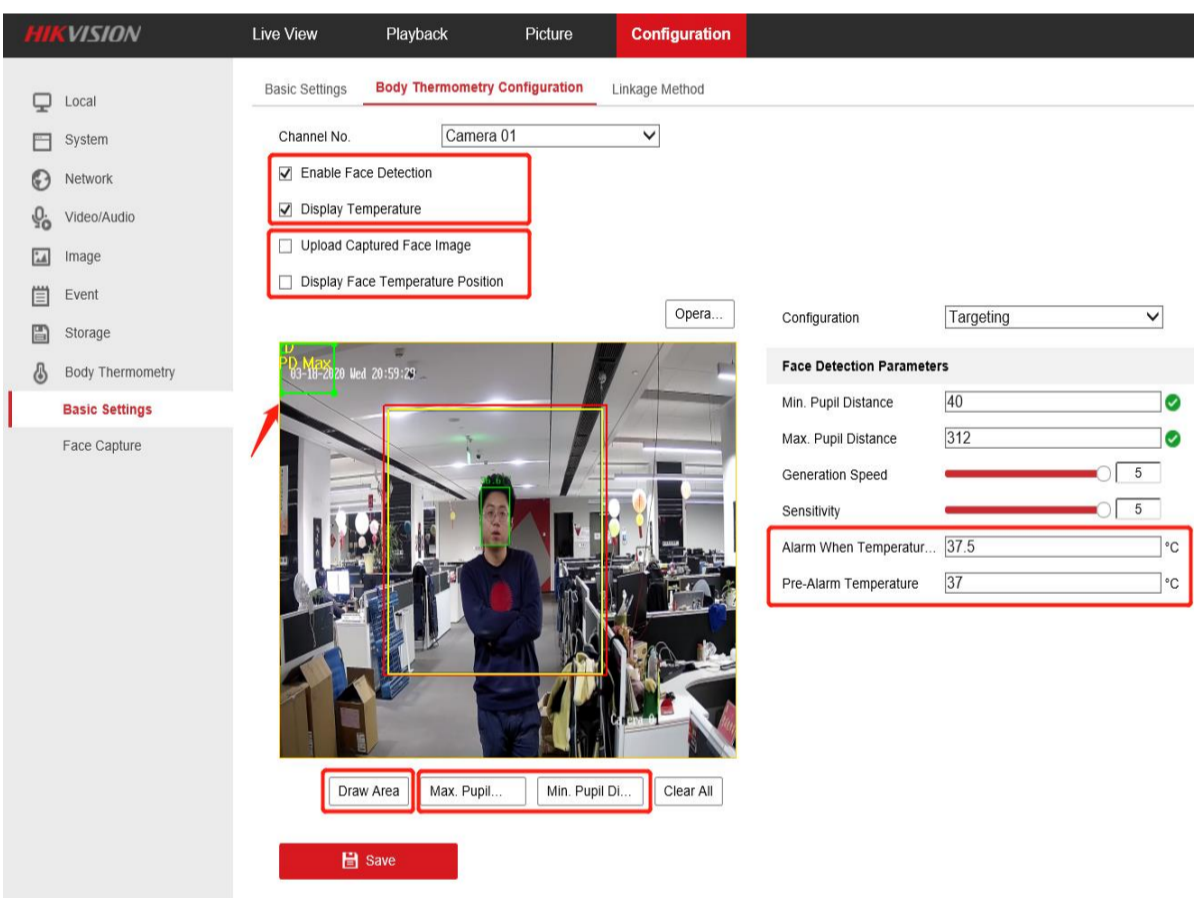
3. Go to Body Thermography **Basic Settings**. Configure and save the following settings:



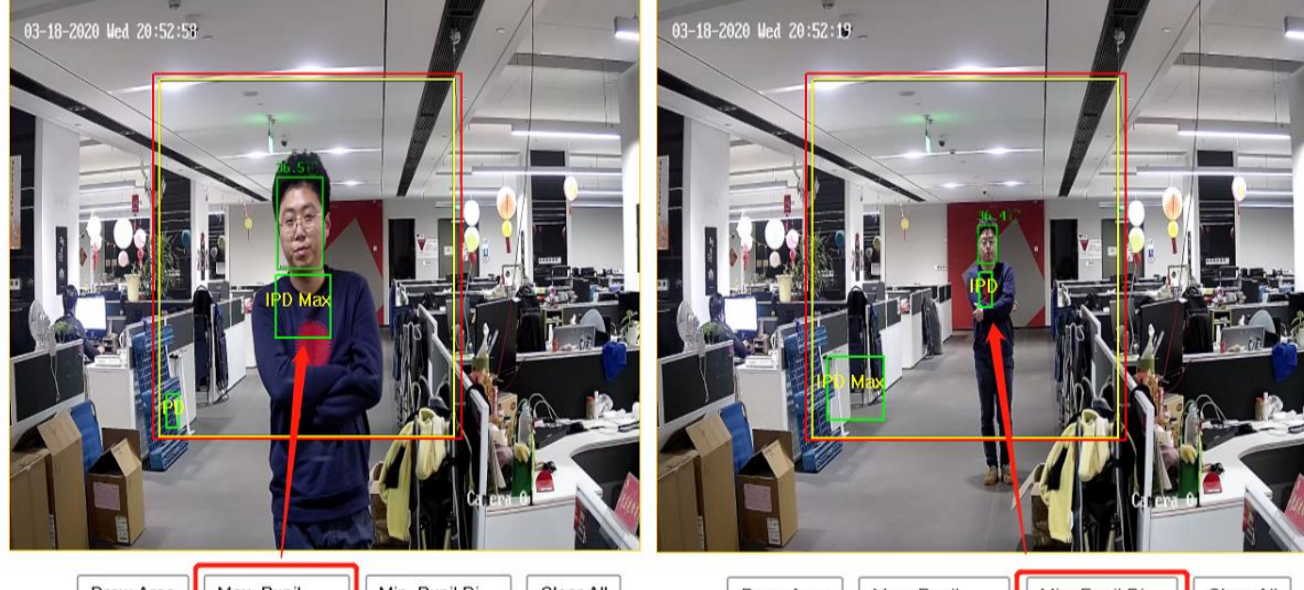
Emissivity: For human skin, this value is normally set as 0.98.

Distance: The actual distance between the camera and measured object.

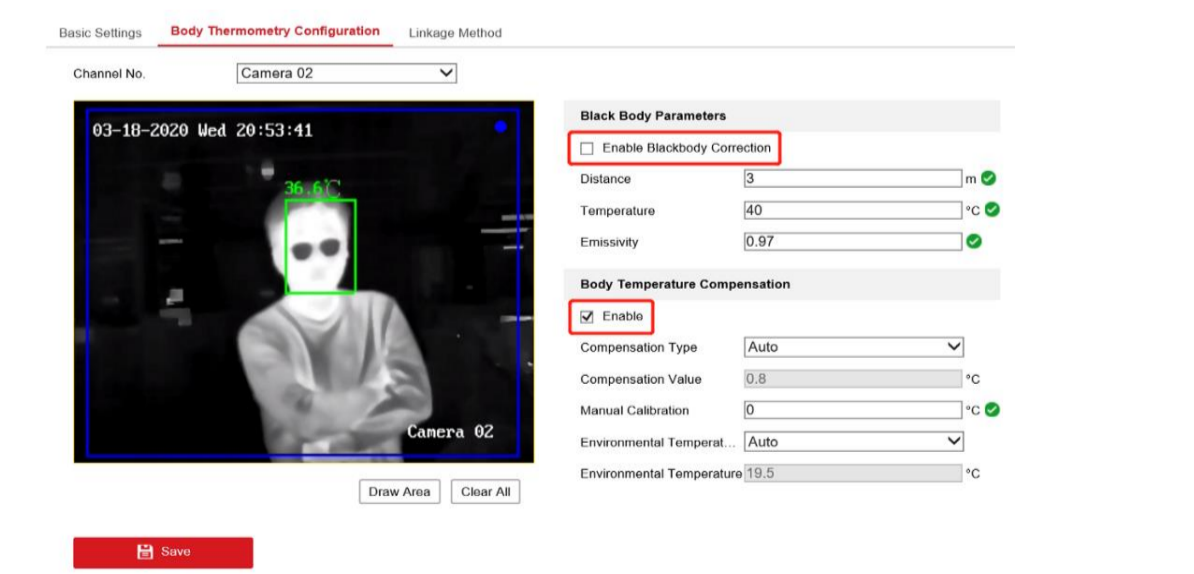
4. Configure Camera 01 (Optical) Settings.



Check **Enable Face Detection** and **Display Temperature**. **Suggest uncheck Upload Captured Face Image** and **Display Face Temperature Position** if its not a must. Set **Alarm Temp.** and **Pre-alarm Temp.** Press **Draw Area** to adjust face detection region. Click **Max. Pupil Distance** and **Min. Pupil Distance** to draw width filter frame, Max and Min distance refer to camera detection distance.



5. Configure Camera 02 (Thermal) Settings.



Uncheck **Enable Blackbody Correction** If no blackbody is used. Check **Enable of Body Temperature Compensation** and keep parameters as default.

3 Advice

The environment would easily influence the performance of thermal camera. Therefore, it is required to be used in a stable indoor environment without wind, and the ambient temperature should be consistent.

Here's some advice:

1. Set up a one-way screening zone, and ensure that camera can clearly see the face of person whose body temperature is being measured.
2. Avoid backgrounds that are too crowded or bright.
3. 30 minutes after turn on the camera, then go body temperature measurement, because the camera itself needs to be steady first.
4. If there is a large gap between indoor and outdoor temperature, it is highly suggested to wait more than 5 minutes then measure body temperature of whom just got in.
5. Follow the guidance of required temperature measurement distance.