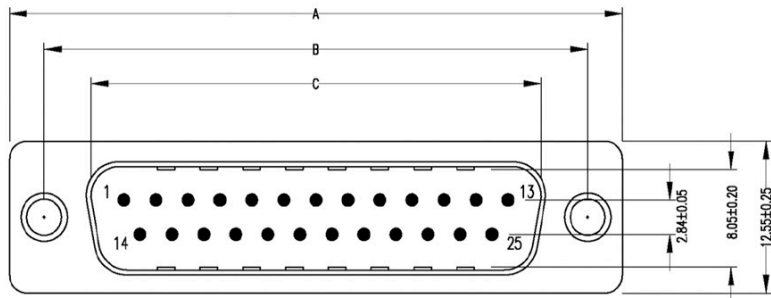
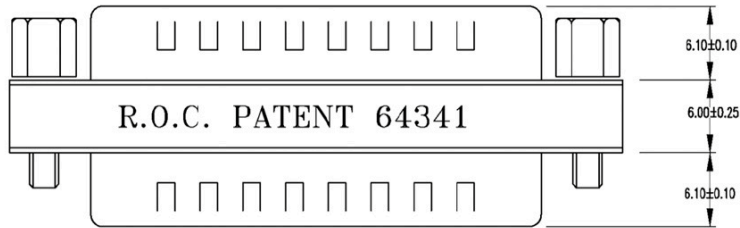
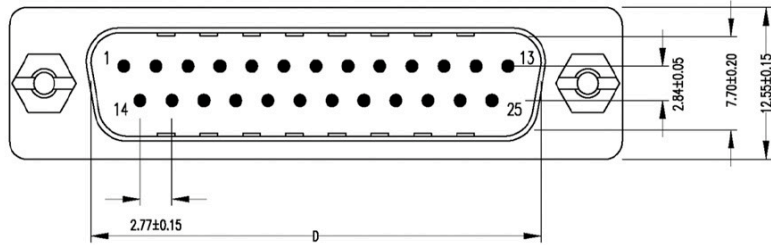
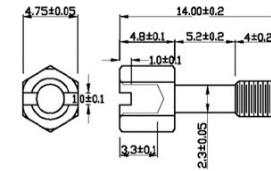


No.	Changes and/or Note No.	Date	Sign	No.	Changes and/or Note No.	Date	Sign



Hexscrew



GENDER CHANGER
PIN OUT: R1 = L1

Label: yellow color with black character
One side: U.S.A. PATENT 5199906 GENDER CHANGER
The other side: R.O.C. PATENT 64341 GENDER CHANGER

SPECIFICATION

INSULATOR: PBT Glass fibre reinforced UL 94 V0
CONTACT: Brass
CONTACT PLATING: Gold plated over nickel
SHELL: Tin plated shell
CURRENT RATING: 3 AMP
DIELECTRIC STRENGTH: 1000V AC for one minute
INSULATOR RESISTANCE: 1000MΩ min at 500V DC
TEMPERATURE: -55°C — +105°C

Part no.	Type/Item	A+0.15	B+0.10	C+0.15	D+0.10
2401-0100-01	9M/M	30.8	25.0	16.92	16.92
2401-0100-02	15M/M	39.2	33.3	25.25	25.25
2401-0100-03	25M/M	53.05	47.04	38.96	38.96
2401-0100-04	37M/M	69.4	63.5	55.42	55.42

DATE	DRAWN	SCALE	MATERIAL TYPE
	APPROVED		REPLACES
			<p>GENDER CHANGER - STANDARD Male to Male DMGC-xxxx-MM</p>
DRAWING No.			2401-0100-0X

