

Grounding ball studs

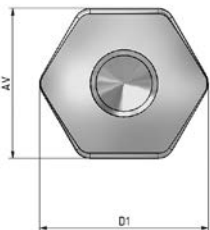
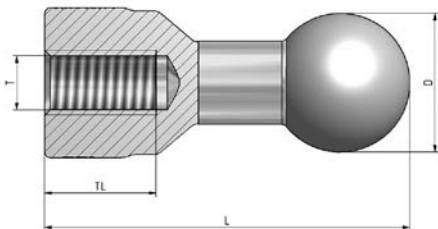


General/use: Grounding ball studs for safety grounding appliances.

Materials: Tin plated copper

Certification and applied regulations: IEC/EN 61230 (5.7)

Product documents



STK code	Product code	Type	T	TL (mm)	AV (mm)	D (mm)	D1 (mm)	L (mm)	Max short-circuit current	Weight (g)	Package (pcs)
64 360 08	VI03-0010	20 mm ball / M12 screw hole	M12	16	27	20	27	58,6	23,7 kA/1s	178	20
64 360 09	VI03-0011	25 mm ball / M12 screw hole	M12	20	27	25	30	65,6	29,6 kA/1s	208	20
64 360 10	VI03-0012	30 mm ball / M12 screw hole	M12	20	27	30	30	71,1	29,6 kA/1s	262	20
64 146 07	VI03-0004	30 mm ball / M16 / 30° bend	M16	24	27	30	30	91	25 kA/1s	344	10

Adapters

Adapter M12 is compatible with M12 -threaded grounding ball stud models. Product is made of steel and plated with zinc.

STK code	Product code	Type	Weight (g)	Package (pcs)
64 360 11	VK01-0001	Screw adapter M12-M12	53	20

