

## System Requirement

- 1GHz or higher-frequency CPU
- 1GB or larger memory
- Hard disk with 2GB or larger free space
- USB 2.0/3.0

## Supported Operating System

- Microsoft Windows Vista
- Microsoft Windows 7
- Microsoft Windows 8
- Microsoft Windows 10

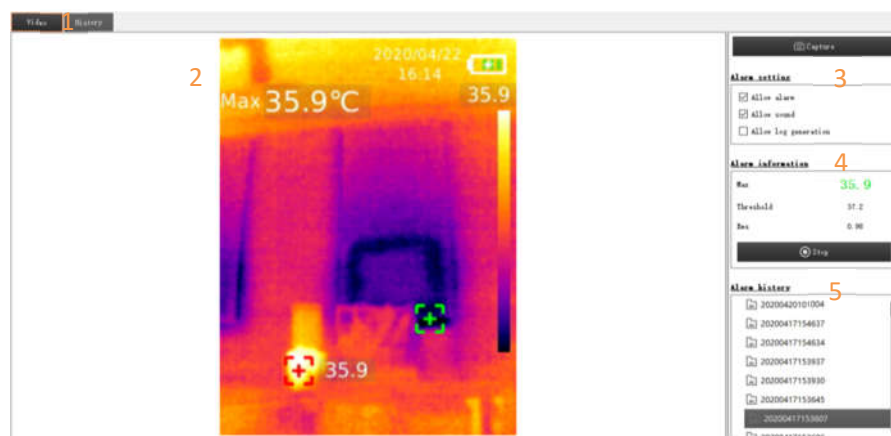
Please update the system in advance if your system is lower than the aforementioned versions.

## Operation

Two modes of the device, video mode and USB mode, can be automatic identified by PC software.

### Video Mode

#### 1. Interfaces and Basic Functions

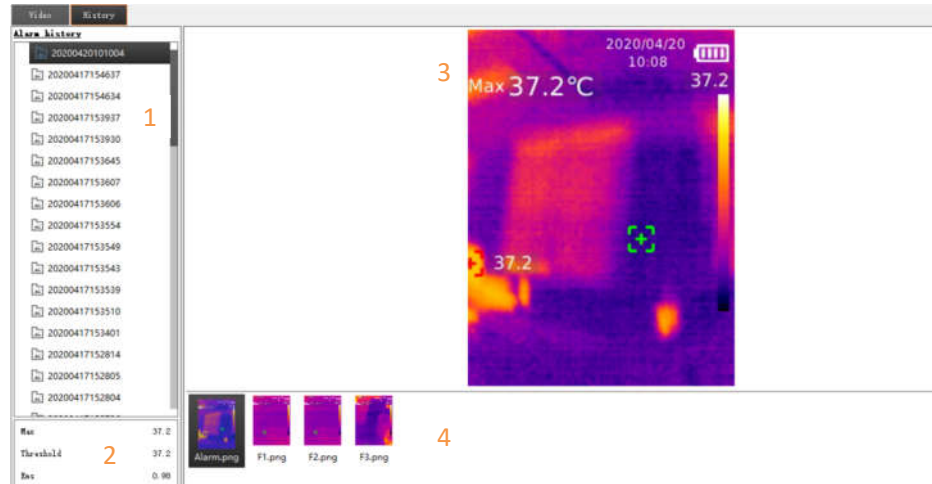


Zone	Description
1	Real-time video or alarm history
2	Real-time video
3	Alarm setting
4	Alarm information
5	Alarm history list

#### Full-screen mode

- Double click zone 2 to enter full-screen mode
- Double click zone 2 or press ESC button to exit full-screen mode.

## 2. Alarm History Review



Zone	Description
1	Alarm history list
2	Alarm information
3	Alarm photos
4	Alarm photo list (F/L represents pre/post-alarm photos)

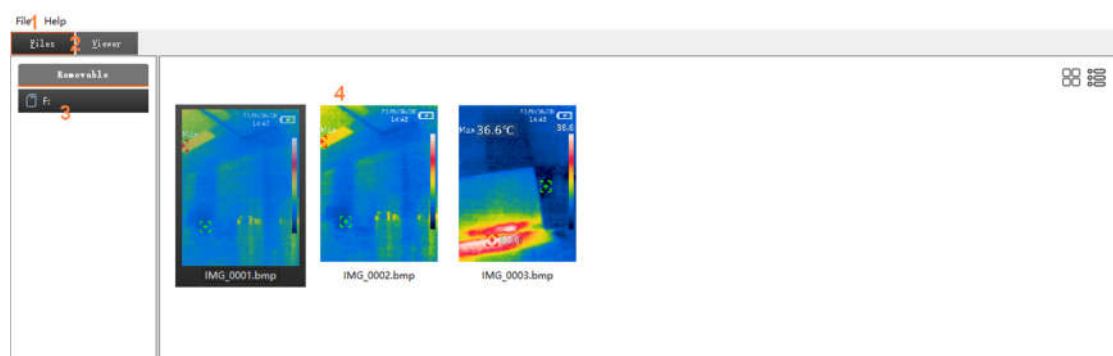
## 3. Alarm Function

When the maximum temperature exceeds or equals to the alarm threshold:

- Maximum temperature will be displayed in color of warning if the alarm is allowed.
- Sound alarm will be enabled if sound alarm is allowed.
- Alarm history files will be automatically generated if log generation is allowed. 1 alarming photo, 3 pre-alarm photos and 3 post-alarm photos will be stored if the condition is met.

## USB Mode

### 1. Interfaces and Basic Functions

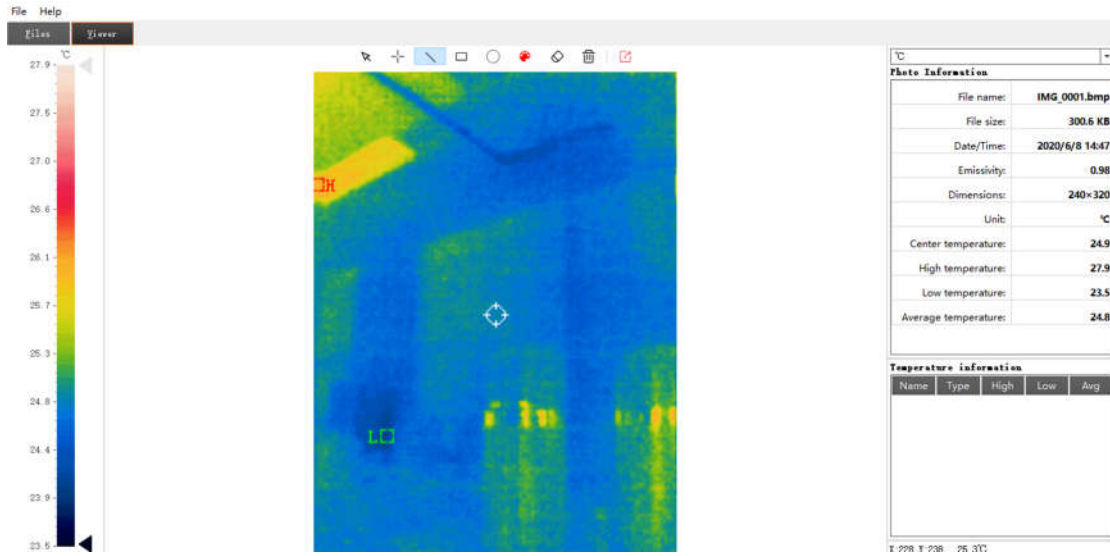


Zone	Description
1	Menu
2	Photo list or photo information

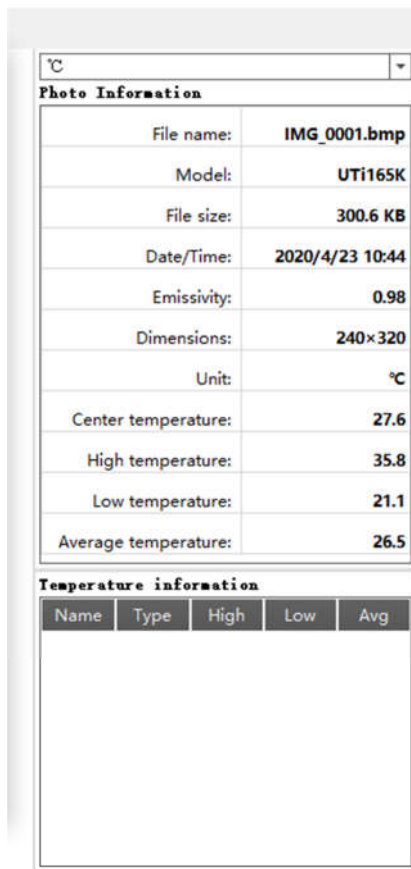
3	Removable disk list
4	Photo list

## 2. Photo Review

- Double click any photo file in zone 4 to open it.





- The information of photo will be displayed on the right.







## 3. Photo Analysis

-  All the analysis tools are included.

-  This is to select existing graphics, which will be displayed by dotted lines.
-  This is to select the shape of graphics between point, line, rectangle and circle, and the data of drawing graphics will be recorded on the right.

**Temperature information**

Name	Type	High	Low	Avg
S1	Dot	24.7	24.7	24.7
S2	Dot	25.0	25.0	25.0
S3	Circle	25.2	24.5	24.8
S4	Line	25.0	24.7	24.8

-  This is to select the colors of graphics.
-  This is to cancel selected graphics.
-  This is to delete all the graphics.
-  This is to export images files.

#### 4. Others

- The temperature of cursor's pixels will be displayed on the lower right corner.

X:220 Y:030 26.2°C

-  This is to set the unit of temperature.