



TECHNICAL DATA SHEET

20 - 01 - 2010

SDEV-FICA 81R2

Designation	Smoove 1 io
Reference	1811003 (pure shine); 1811005 (black shine); 1811007 (silver shine); 1811088 (blue light)
Range	io Homecontrol

FUNCTIONS

- 1W control
- Sensitive Command : Up, My, Down
- Setting with io ergonomic
- Composition: 1 module, 1 Mounting plate

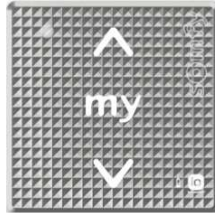
- Icon Battery life time
- Switch ON/OFF
- Switch selected mode (Advanced ergonomic for application)



Smoove 1 Pure Shine



Smoove 1 Black Shine



Smoove 1 Silver Shine



Smoove 1 Blue Light

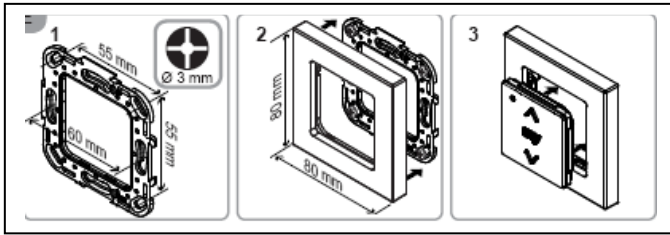


Support mural

TECHNICAL SPECIFICATIONS

Box	Material Color	ABS & PC Pure Shine, Black Shine, Silver Shine, Blue Light
	Size	Module 50 x 50 x 10 mm
	Protection factor against solid & splashproof	IP 30
Battery	Voltage Type Number	3V CR 2430 x1
Battery lifetime (at ambient temperature in typical conditions)		42 months
Radio frequency EIRP (Equivalent Isotropically Radiated Power) Modulation Type		868.95MHz -5 dBm or 0.3mW FSK dev. ± 19.2 kHz
Protocol Antenna		io homecontrol 1 Way Integrated
Temperature range	Storing Working	-30°C / +70°C 0°C / +60°C
Drop test		Installation: at 0°C 1/face (height : 1,2m) Using: at 20°C 1/face (height : 1,2m)
Wear resistivity Cleaning products resistivity		50 250 cycles
Weight Standard (CE)		24g
Safety of the user : EN EN60950-1 : 2006		
Health of the user : EN50371 : 2002		
Electromagnetic compatibility : EN61000-6-1 : 2007_EN61000-6-3 : 2007_EN301 489-3 V1.4.1 : 2002_EN301 489-1 V1.8.1 : 2008		
Radio Spectrum : EN300220-2 V2.1.2 : 2007_EN300220-1 V2.1.1 : 2006		

DESCRIPTION



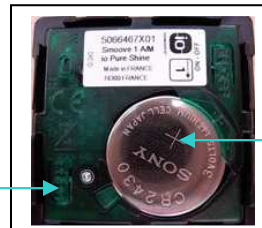
Green cover for io technology

Select mode button

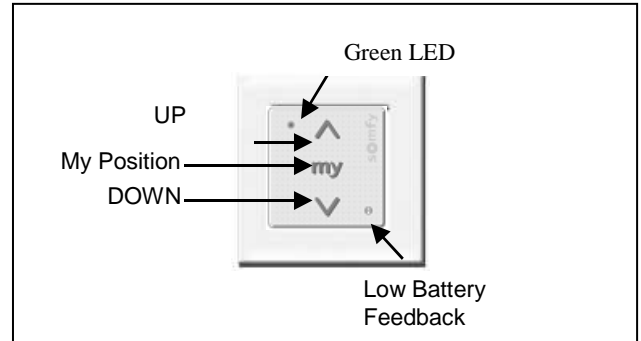


ON / OFF

Prog



Battery



COMPATIBILITIES

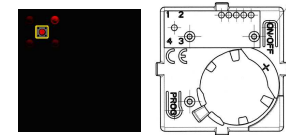
Actuators :

- All io homecontrol actuators (0% / 100%)
- US Dimming for light & heat profiles
- DAP all io for VB fast speed, RS with tilting profiles
- US Dimming for VB slow speed

INSTALLATION

Select mode

Sens of the mode choice (toggle) is done clockwise.



- LED LIGHTS remains continuously ON during 3s
- LED colour still to be confirmed

Position 1: 0 – 100%
(VR, windows, GO...)

Main Parameter = Position of the shutter

Position 2 : Dimming US (1st param)
(light, heat...)

Main parameter = Light intensity
Functional parameter # 1 = Light intensity gradient



Position 3: DAP all io
(VB fast speed, VRLO..)

Main parameter = Position of the shutter
or Position of the blind
Functional parameter # 3 = Orientation of the slats

Position 4: Dimming US (All io 1st and 2nd param)
(VB slow speed)

Main parameter = Position of the shutter or Position of the blind
Functional parameter # 2 = Speed of the slats during orientation
Functional parameter # 3 = Orientation of the slats

Switch ON/OFF



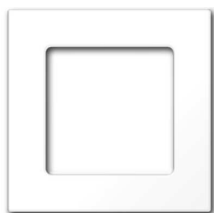
ON / OFF

- Press On/Off button for wake up the sensitive pad.

Remark

The prog button is available when the module is OFF

Frame available



Pure



Black



Silver RTS



Silver iO



Light bamboo



Carbonated bamboo



Cherry



Walnut



Double Pure

BE – R&D
F. GIGOUT

QUALITY
G. BRUNEAU

MARKETING
C. DENIAU