

# KNX PIR movement and presence detectors



Hotel room energy-saving units



Lighting control in corridors (for hotels, offices and hospitals)



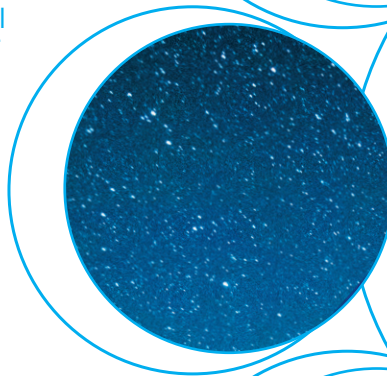
Offices, swimming baths and schools



Staircase light control



Building and house automation





**KNX movement and presence detectors.**

**Internal installation.**

- 2 outputs (datapoint) for load control (Lighting, HVAC etc.)
- Adjustment of ambient light threshold, and PIR sensitivity
- 1 output (datapoint) – master/slave detection
- Selectable function to inhibit ambient light threshold control
- Reporting of light level and movement status
- Detection of movement direction (type 18.4K)
- Internal ceiling mounting
- Suitable for ETS 4 (or latest versions)

18.4K/18.5K  
KNX terminal



For outline drawings see page 4

**Supply specification**

Type of BUS		KNX	KNX
Supply voltage	V DC	30	30
Rated consumption	mA	10	10

**Technical data**

Ambient light intervention threshold	lx	1...1500	1...1500
Light ON time after last detection		0.1 s...18 h	0.1 s...18 h
Ambient temperature range	°C	-5...+45	-5...+45
Protection category		IP 40	IP 40

**Approvals** (according to type)



**NEW** 18.4K.9.030.0000



- Applications: hotel and offices corridors, transit areas
- Sensing area 30 meters length and 4 meters width
- Two detection areas: right and left

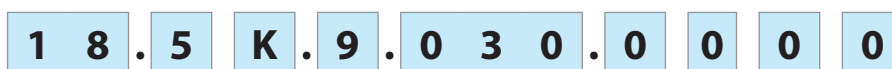
**NEW** 18.5K.9.030.0000



- Applications: offices, schools, zones of low activity
- Extensive sensing area up to 64 m<sup>2</sup>
- Two sensing areas: "presence" suitable for zones of low activity, and "movement" suitable for transit areas or zones of high activity

### Ordering information

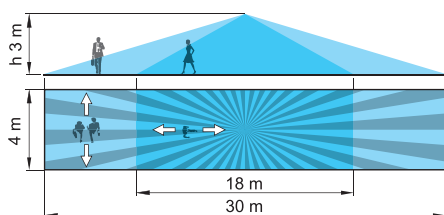
Example: 18 series, KNX PIR movement and presence detector.



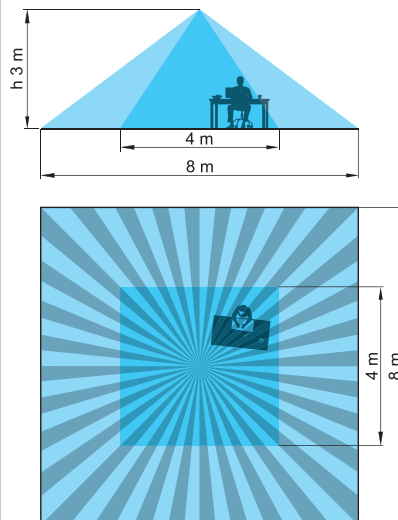
- Series** — 18
- Type** — 5  
4 = PIR movement detector for corridors  
5 = PIR movement and presence detector
- Supply voltage**  
030 = KNX Bus
- Supply version**  
9 = DC
- Output**  
K = PIR movement and presence detector with KNX interface

### Sensing area

Type 18.4K



Type 18.5K



### Outline drawings

Type	Suspended ceiling mounting	Recess mounting	Surface mounting
18.4K			
18.5K			