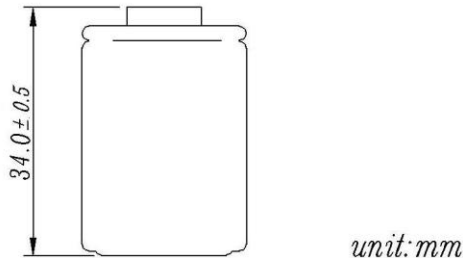
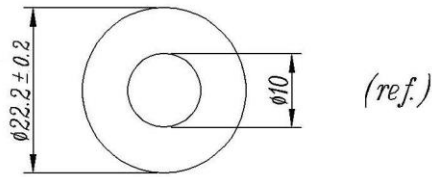


Sealed Rechargeable Cylindrical cell Nickel Metal Hydride

4/5SC-2200 mAh



Date Sheet

Type-----Enrichpower4/5SC2200

System-----Sealed rechargeable Ni-MHCylindrical cell

Nominal Voltage-----1.2V

Application-----Discharge current 220mA to 22A (Continuous)

Capacity (discharged at 0.2C to 1.0v at 20°C)

Nominal 2200mAh

Minimum 2100mAh

Typical 2200mAh

Internal resistance (at 1 kHz)

Fully charged, 20°C (approx)---5~7mΩ

Weight approx-----42g

Dimensions(including shrink sleeve)

-Diameter -----22.2(±0.2mm)

-Height -----34.0(±0.5mm)

Cd content(%cell w):-----0%

Max.discharge current(continuous)-----20C

Charging conditions(20°C)

standard charge-----220mA 14h

quick charge-----2200mA 1.1h

fast charge -----2A to 6A

Charge termination control recommended control parameter

- ΔV 5mV

DT/dt 0.8°C/min(0.5-1C)

0.8°C-1°C/min(>1C)

TCO 40-45°C

Timer 105%nominal input

Continuous 100mA maximum current for 1 year

Overcharge No conspicuous deformation and/or leakage

Max.charging voltage 1.5V at 220mA charging

Operation temperatures(recommended)

Storage----- -20°C up to +35°C

Discharge----- -20°C up to +50°C

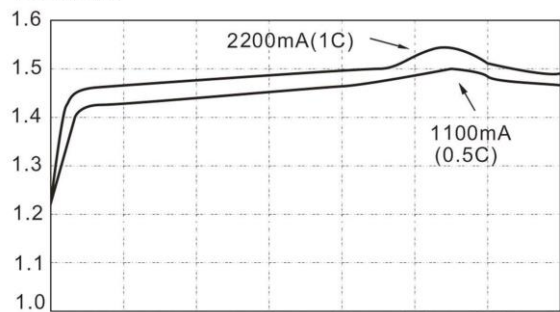
standard charge----- 0°C up to +40°C

quickcharge,fastcharge-- -10°C upto +40°C

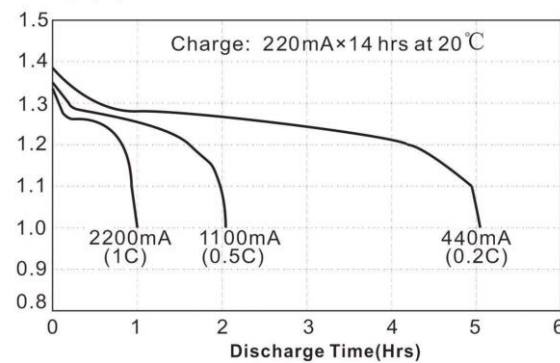
permanent charge----- +10°C up to +45°C

Life expectancy(20°C)----->500 cycles

Fast Charge (Charge Control required)
Voltage(V)



Low Rate Discharge
Voltage(V)



High Rate Discharge
Voltage (V)

