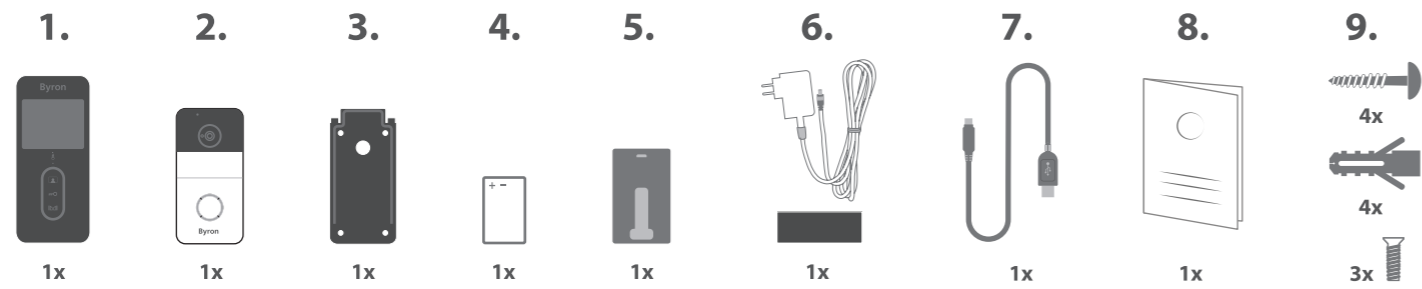
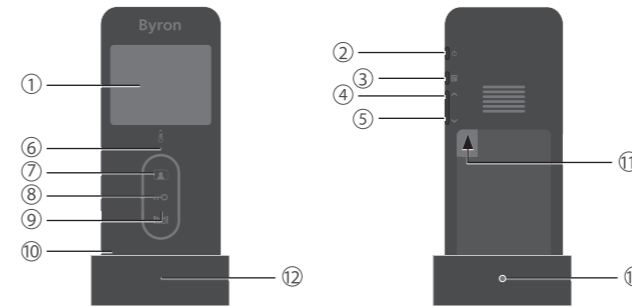


2. PARTS DESCRIPTION

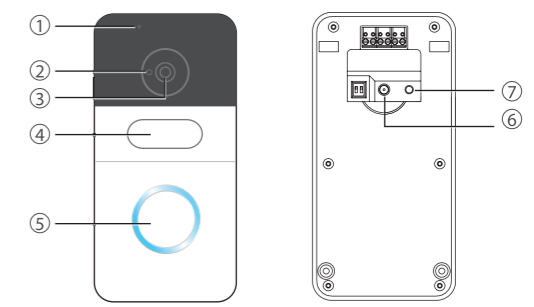
2.1 BOX CONTENT



2.2.1 INDOOR UNIT (MONITOR)

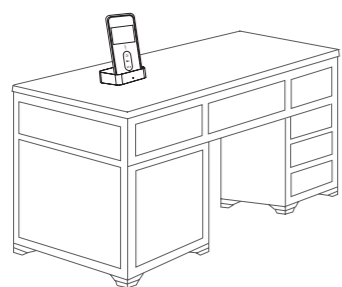


2.2.2 OUTDOOR UNIT (DOORBELL)

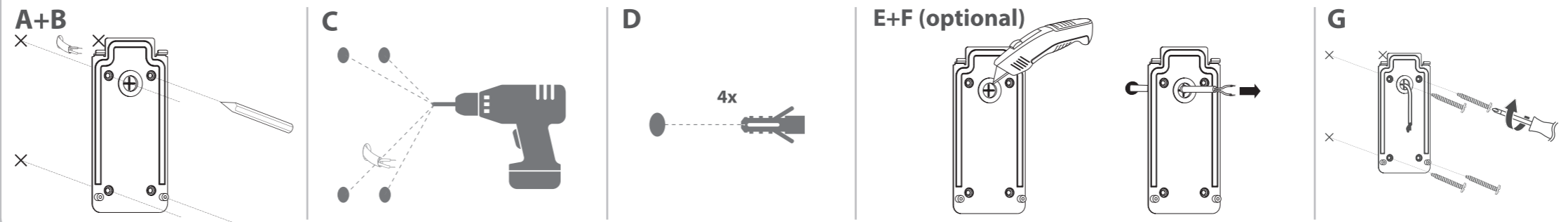


3. INSTALLATION

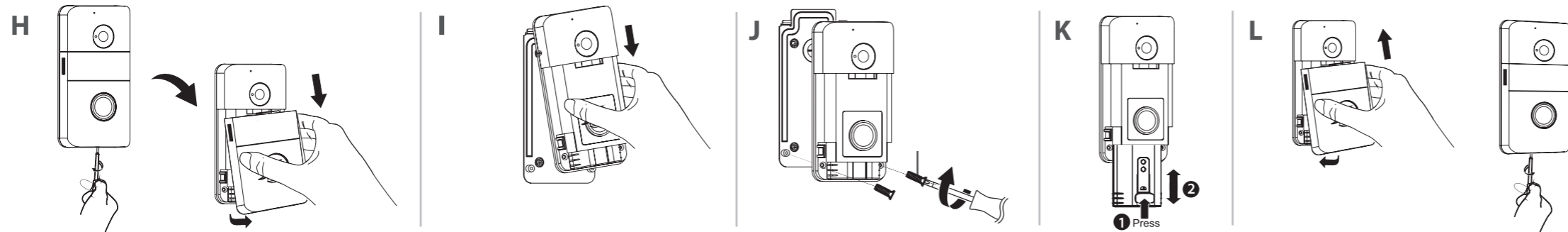
3.1 PLACING THE INDOOR UNIT (MONITOR)



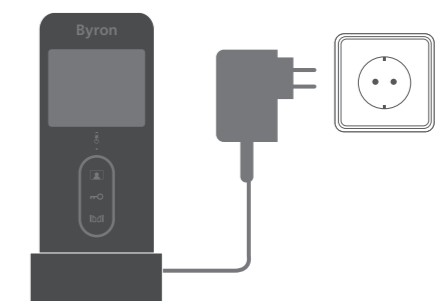
3.2 MOUNT THE OUTDOOR UNIT (DOORBELL)



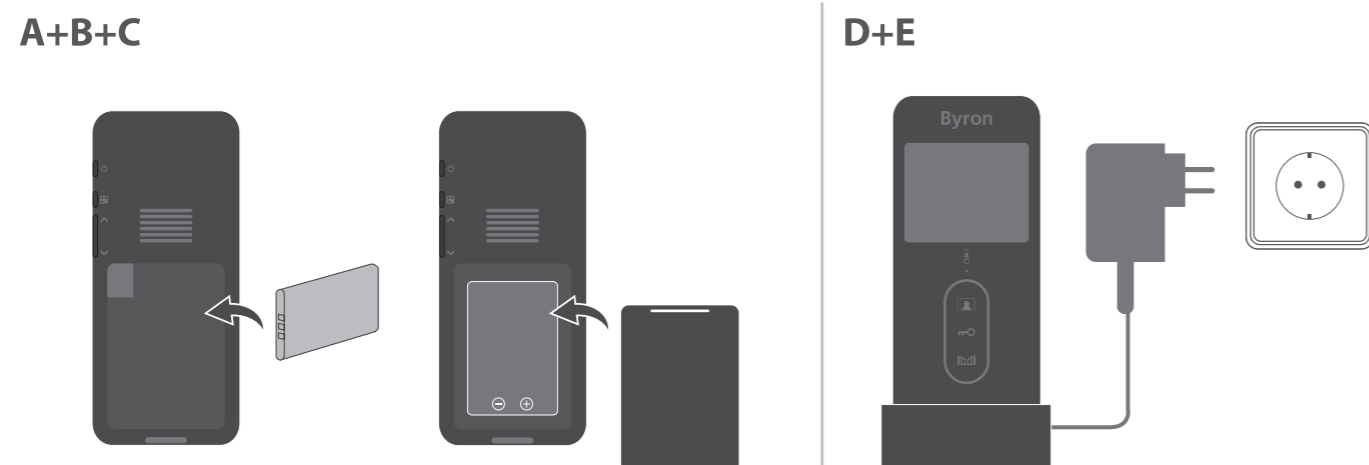
3.2 MOUNT THE OUTDOOR UNIT (DOORBELL)



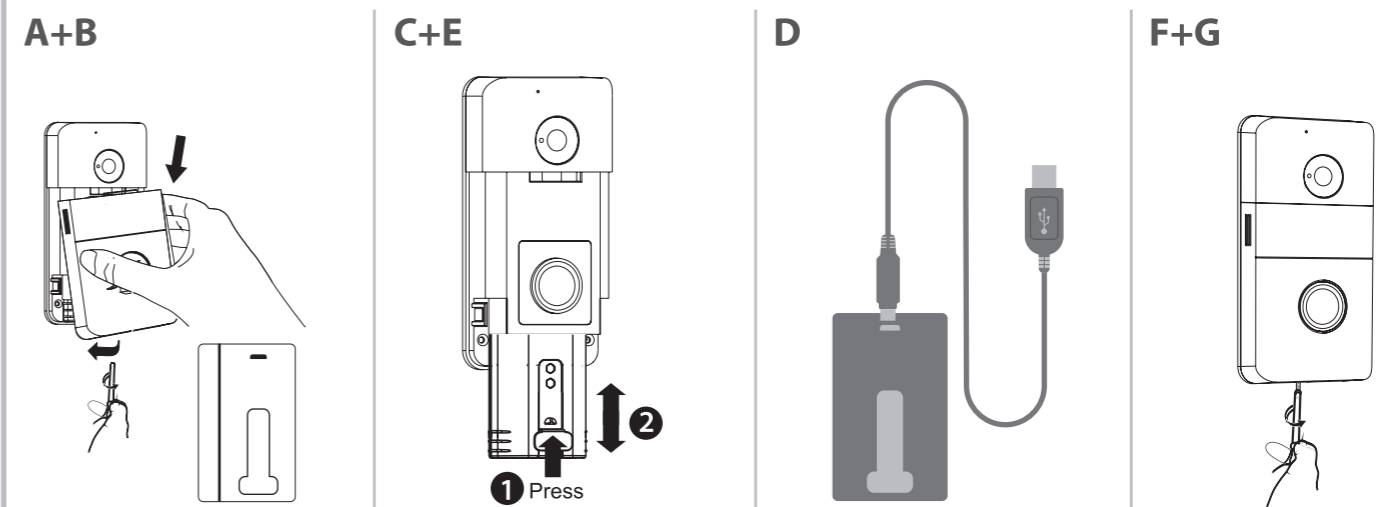
3.3.1 CONNECTING AC POWER TO THE INDOOR UNIT



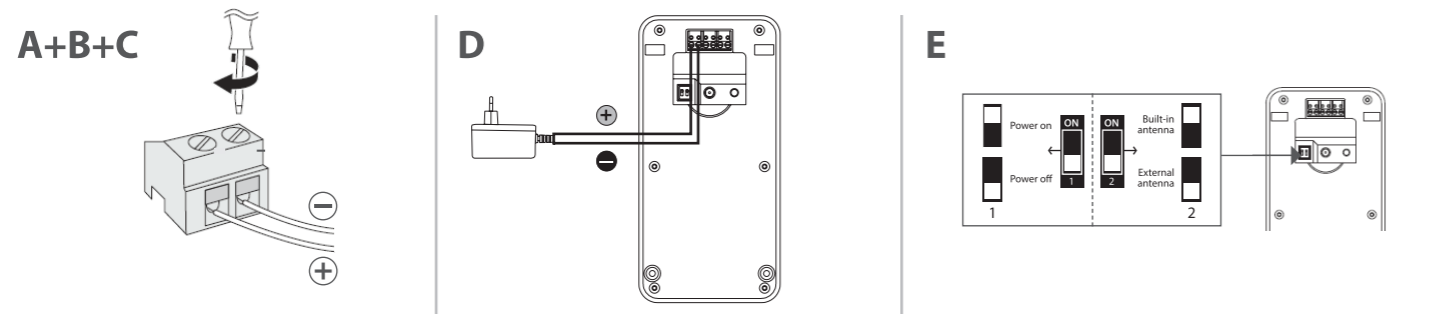
3.3.2 INSTALLING AND CHARGING THE INDOOR UNIT (MONITOR) BATTERY



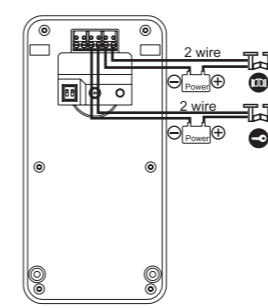
3.3.3 CHARGING OUTDOOR UNIT (DOORBELL) BATTERY



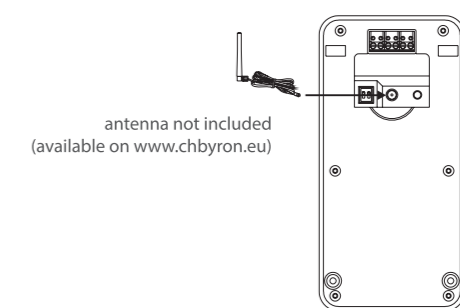
3.3.4 CONNECTING AC POWER TO THE OUTDOOR UNIT (OPTIONAL, ADAPTER NOT INCLUDED)



3.3.5 + 3.3.6 CONNECTING A DOOR LOCK/GATE OPENER (NOT INCLUDED)

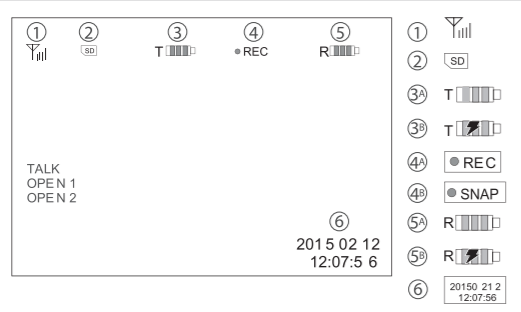


3.3.7 CONNECTING THE EXTERNAL ANTENNA (NOT INCLUDED)



4. BASIC FUNCTIONS

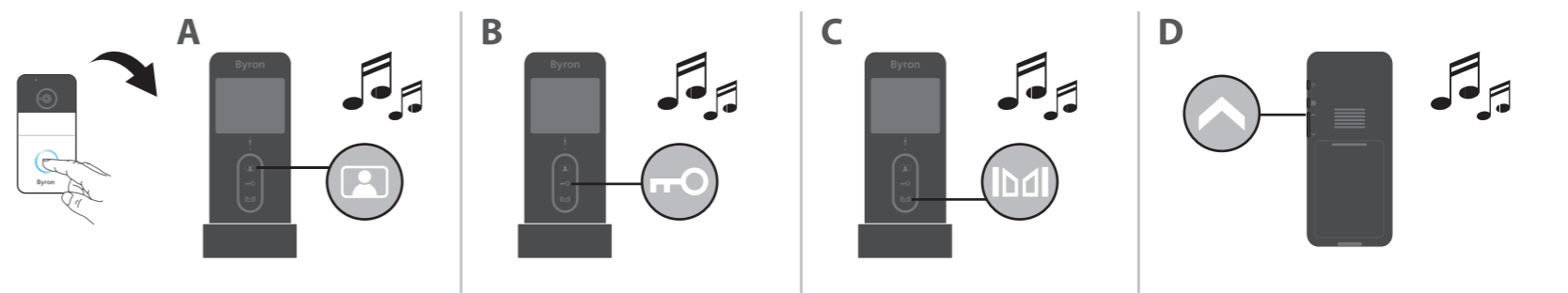
4.1 SCREEN ICONS



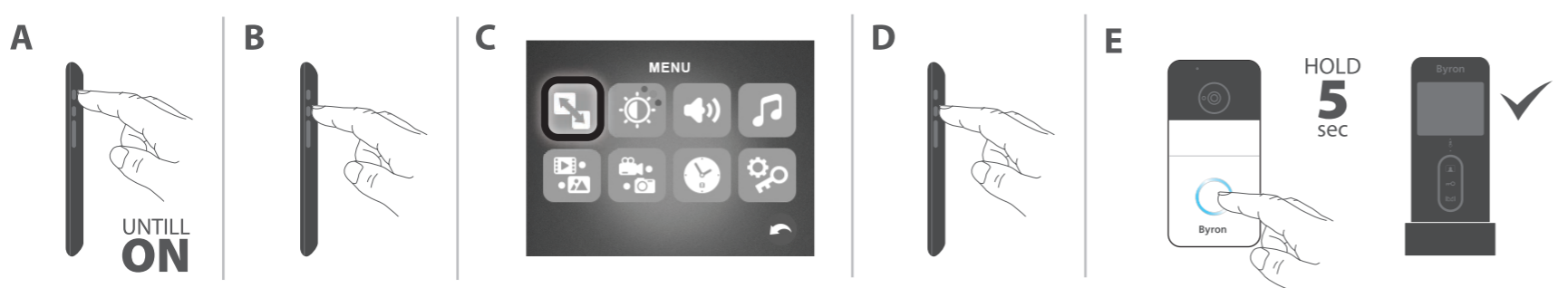
4.2 SETTINGS MENU



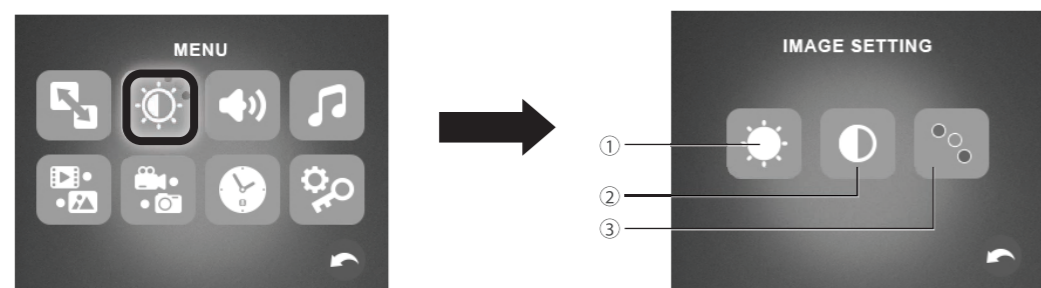
4.3 ANSWERING A CALL



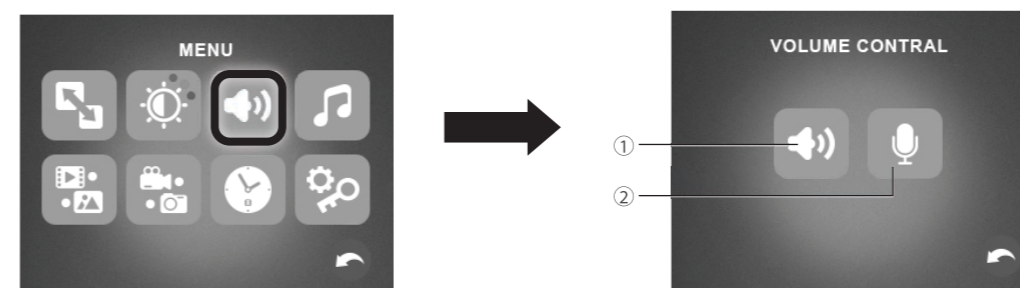
4.4 PAIRING THE MONITOR/DOORBELL



4.6 IMAGE SETTINGS



4.7 VOLUME CONTROL



4.8 RINGTONE SETTINGS

The first screenshot shows a 'MENU' screen with a grid of icons. The music icon is highlighted with a white border. An arrow points to the second screenshot, which is the 'MUSIC' screen. It features a music note icon and a volume control icon (a speaker with minus and plus signs).

4.9 PLAYBACK MENU

The first screenshot shows a 'MENU' screen with a grid of icons. The video icon is highlighted with a white border. An arrow points to the second screenshot, which is the 'PLAY BACK' screen. It features a play button icon and a photo icon.

4.10 RECORDING VIDEOS/PHOTOS

The first screenshot shows a 'MENU' screen with a grid of icons. The video icon is highlighted with a white border. An arrow points to the second screenshot, which is the 'REC/SNAP' screen. It features a video camera icon and a camera icon. Three numbered callouts (1, 2, and 3) point to the video camera icon, the camera icon, and the back arrow at the bottom right, respectively.

4.11 TIME SETTING

The first screenshot shows a 'MENU' screen with a grid of icons. The clock icon is highlighted with a white border. An arrow points to the second screenshot, which is the 'TIME SETTING' screen. It displays the date and time in a digital format: YEAR MONTH DAY HOUR MINUTE, with the values 2019-08-26 10:00. A back arrow is at the bottom right.

4.12 UNLOCK TIME SETTINGS

The first screenshot shows a 'MENU' screen with a grid of icons. The key icon is highlighted with a white border. An arrow points to the second screenshot, which is the 'UNLOCK' screen. It features a key icon and a door icon.