



## Digalox® DPM72-MPP/-MPPA/-MPPV

Graphical DIN-panelmeter with RGB backlight for analogue signal 0/2 - 10 V and/or 0/4 - 20 mA with data transmission via USB interface, wireless technology or Modbus protocol, graphic display optional

### Description

Graphical measuring instrument for electrical parameters and process display with RGB backlight - unique, innovative, and multifunctional.

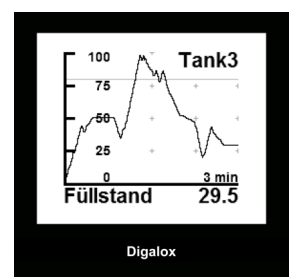
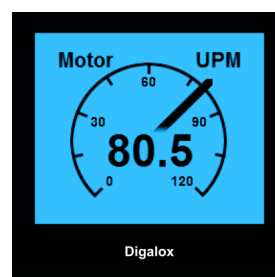
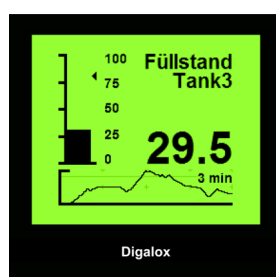
Depending on model the measurement modes analogue signal (2 x) 0/2 to 10 V and/or (2 x) 0/4 to 20 mA DC are supported. The double display is able to display 2 parameters simultaneously and assign individual warning colours to thresholds. Minimum and maximum values are recorded and can be displayed and reset via jumper or an external switch. Measured values of one parameter are recorded over a timespan of 3 minutes up to 14 days. The timebase as well as the display of the measuring history can be activated by an external switch.

The measured values remain stored as long as the device is supplied with voltage. A variety of parameters can be adjusted using the USB configuration software, e. g. scale endpoint, scale caption, display style, backlight colour, thresholds for alarm output including optional warning colour, hysteresis, and many more. Recorded measurement values can be read and a continuous transmission of the actual measuring value can be enabled. Using the software, values can be viewed and exported as CSV. Measurement values can be transmitted via USB interface, XBEE wireless technology or Modbus protocol.

### Features

- Graphic display with pointer, bargraph, progress, or double display and RGB backlight
- Measuring range MPP: 0/2 to 10 V DC and 0/4 to 20 mA DC for analogue signal
- Measuring range MPPA: 2 x 0/4 to 20 mA DC for analogue signal
- Measuring range MPPV: 2 x 0/2 to 10 V DC for analogue signal
- Transmission of measurement values via USB interface, XBEE wireless technology or Modbus protocol
- Recording of measurement over up to 14 days
- Individual alarm backlight colour
- Customisation including user splash display, scale endpoint and scale caption
- Real-time transmission of measured values
- Bimetal function (mean value formation)
- Integration of measured values
- Including Windows software for configuration and recording of measured values
- Display optional

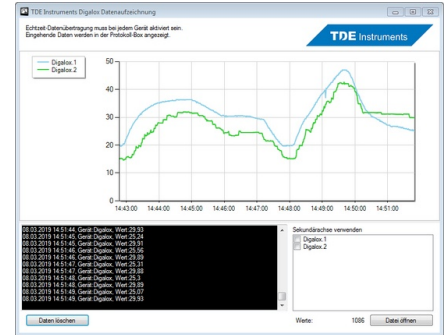
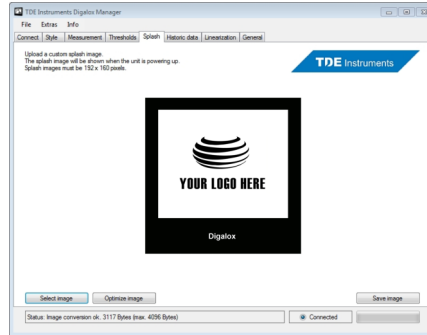
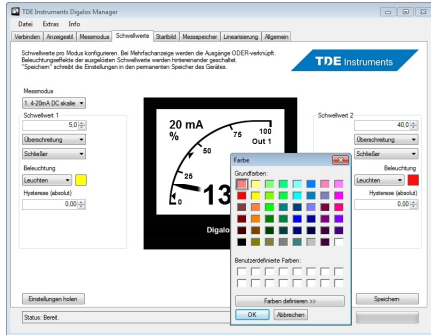
### Examples of adjustable display styles



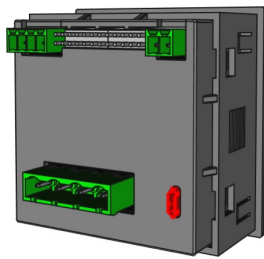
## Software Digalox Manager®

The corresponding free software enables the individual configuration of the meter. Via software the measured values can be read from the memory, as well as continuous data transmission enabled.

Using the software, values can be viewed, recorded and exported as CSV.

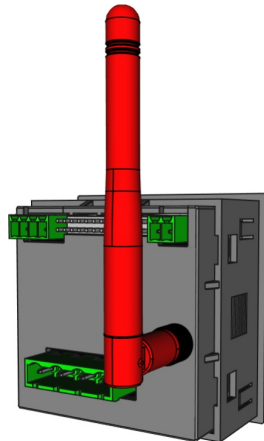


## Alternative casings



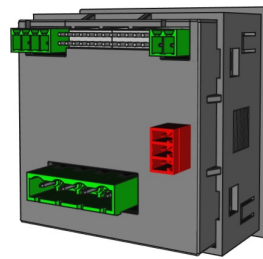
### USB

Galvanically isolated  
 Supply 5 V DC



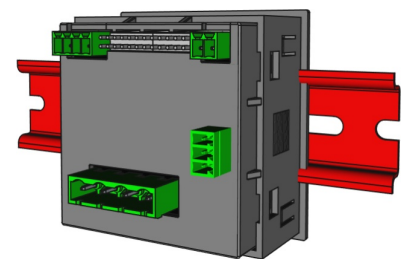
### XBEE

Wireless transmission  
 2.4 GHz Mesh-network



### Modbus

3 x 3.5 mm RS485



### Rear view without display

Mounting on DIN rail  
 for XBEE and Modbus

## Specification

Supply:  
 12 - 24 V AC/DC (opt. via USB, galvanically isolated)  
 Display (optional):  
 LCD graphic display 192 x 160 pixels  
 Measuring range voltage:  
 0/2 - 10 V DC (max. 30 V)  
 Accuracy voltage:  
 ±0.5 % true RMS  
 Internal resistance voltage:  
 102 kOhm  
 Measuring range ampere:  
 0/4 - 20 mA DC (max. 100 mA)  
 Accuracy ampere:  
 ±0.5 % true RMS  
 Internal resistance ampere:  
 6,2 Ohm  
 Recording of measurement:  
 3 mins. to 14 days

Alarm outputs:  
 2 optocoupler outputs max. 30 V DC, 50 mA  
 Operating temperature:  
 0 °C to +50 °C  
 Storage temperature:  
 -20 °C to +70 °C  
 Dimensions:  
 72 mm x 72 mm x 58 mm  
 Panel cut-out:  
 68 mm x 68 mm  
 Fixation:  
 Bracket  
 Protection front:  
 IP65 when mounted with gasket (separately available)  
 Manufacturer:  
 TDE Instruments