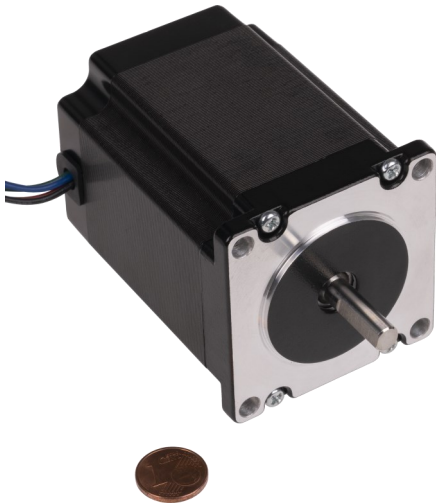


# NEMA23 HIGH TORQUE STEPPER MOTOR

NEMA23-05



Our NEMA 23 series are high torque stepper motors.

This stepper motor with high performance can be optimally used for tasks in the areas of CNC (f. e. milling machines, etc.) or robotics.

## MAIN FEATURES

Shaft	Ø 6.35 x 20 mm (5.85 mm flatspot)
Interface connection	4 wire
Dimensions	56 x 56 x 76 mm
Items delivered	NEMA23 stepper, connection cable

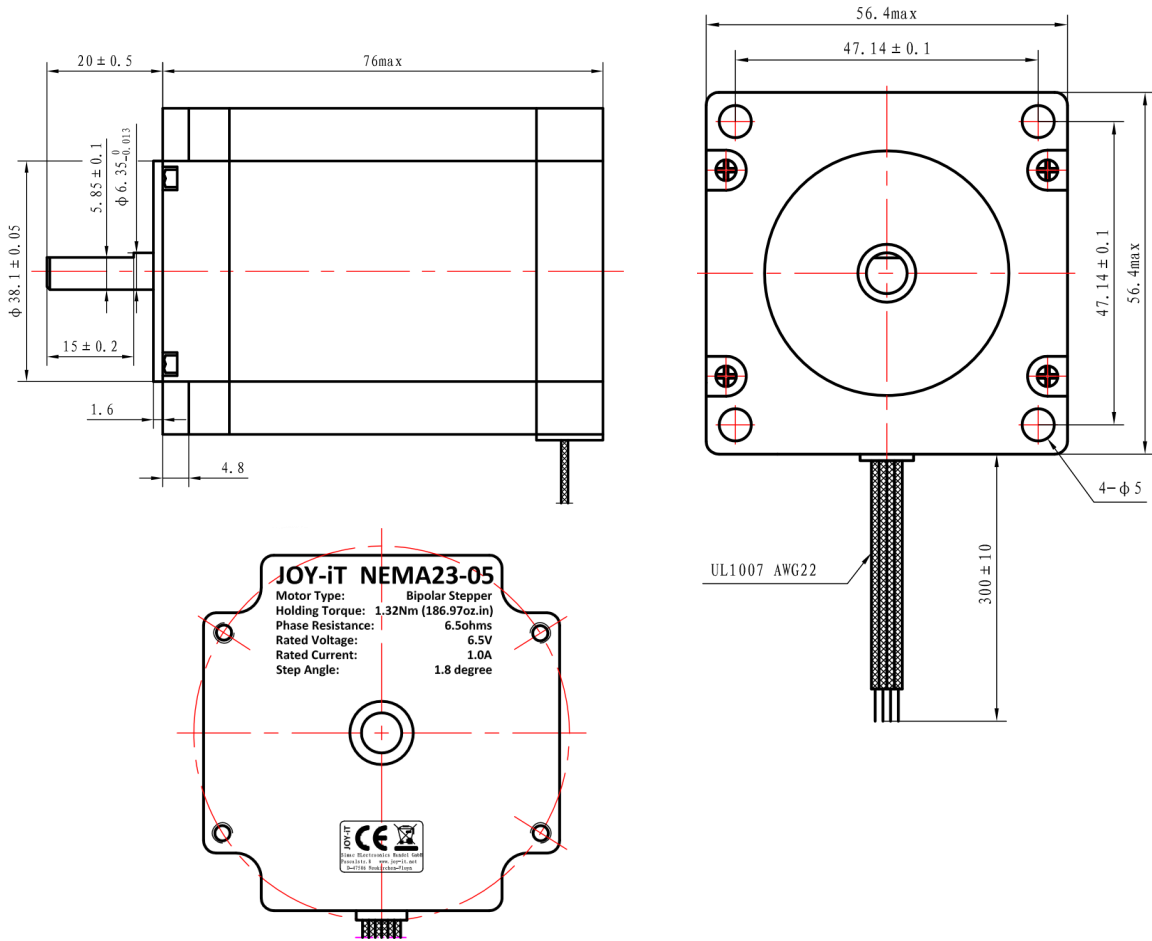
## PERFORMANCE SPECIFICATIONS

Holding torque	1.32 Nm
Rated Voltage	6.5 V
Rated Current	1.0 A
Step Angle	1.8 ° ±5 %
No. of Phases	2
Phase Resistance	6.5 Ω
Phase inductivity	20 mH
Isolation resistance	100 MΩ min. @500 V DC
Isolation class	B (130 °C)
Rotational inertia	460 g·cm <sup>2</sup>
Detent torque	0.07 Nm
Operating temperature	-10 °C - 50 °C

## FURTHER DETAILS

Article No.	NEMA23-05
EAN:	4250236821764
Customs Tariff No.	8501109990

DRAWING



WIRING

