



M822 ChessLink

User manual

1 Important information

Before using this device, please read the following safety notes and operating instructions completely, and pay careful attention to them. Please store this user manual with the device, so that you can refer to it later if needed. If you later give this device to another user, please also give them this manual.

This device is intended for private use in dry indoor rooms.

1.1 Safety instructions

- Please note that this product is not a child's toy within the meaning of Directive 2009/48/EC. If you let your children use the device, ensure you instruct them accordingly and ensure that the device is used only as intended.
- Keep the packaging bags and film away from babies and small children, as there is a danger of suffocation!
- In order to avoid damage, do not expose the device to heat, eg from radiators or from direct sunlight, and do not expose it to any kind of moisture.
- In order to avoid malfunctions, do not operate the device on or near devices that create magnetic fields or electromagnetic radiation, such as for example televisions, loudspeakers, mobile and cordless telephones, WiFi devices etc.
- Do not open the device under any circumstances. It does not contain any serviceable parts. In the event of malfunction, contact the service address listed.
- Only use the original mains adaptor for the ChessGenius Exclusive, which has the following specifications: 9V DC 1.0A

Please make sure you observe the following points when using the AC adaptor:

- The power socket should be located close to the device and should be easily accessible.
- The device should not be connected to more power sources than recommended.
- The electrical contacts must not be short-circuited.
- Always disconnect the adaptor from the mains before cleaning the device.
- Regularly check the product and the mains adaptor for damage, and do not use either of them if they are damaged. Never open them up.
- Please follow the safety instructions on the AC adaptor.

2 Control elements

On the front:

Red LED is lit up: ChessLink is switched on.

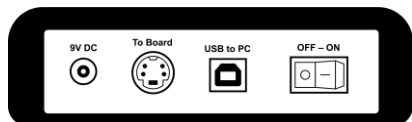
Green LED is lit up:

ChessLink is connected to a Bluetooth-enabled receiver.



On the rear:

- **9 V DC:** Socket for the mains adaptor. Only use the mains adaptor supplied with your ChessGenius Exclusive.
- **Board:** Socket for the mini-DIN connection cable for your ChessGenius Exclusive
- **USB:** Socket for a USB cable
- **OFF/ON:** On/off switch



3 Using ChessLink

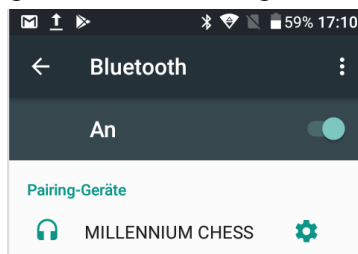
3.1 What is ChessLink?

ChessLink connects Millennium chessboards to your smartphone, tablet, laptop or desktop computer via Bluetooth or USB. In conjunction with the relevant software (which you can find on www.computerchess.com), you can use the ChessGenius to, for example:

- Increase playing level
- Play online against opponents from all over the world
- Access chess databases
- Save as many chess games as you like
- Automatically analyse games

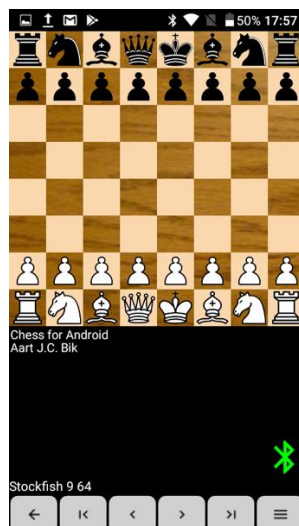
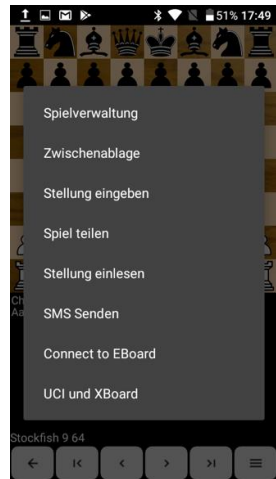
3.2 Putting into operation

- Insert the mains adaptor for your ChessGenius Exclusive into the 9V DC socket on the rear of the ChessLink.
- Connect the ChessLink to the sensor board.
- To do so, use the mini-DIN cable included with the ChessGenius Exclusive.
- Switch the ChessLink on. The red LED lights up.
- Pairing: Connect the ChessLink to your Bluetooth device by activating this function. See fig:



3.3 Connecting to Android devices

- From your Play Store, download the app 'Chess for Android' to your smartphone or tablet.
- Press on the area beneath the chessboard. The menu then appears (see fig right).
- Press 'Connect to EBoard'.
- On devices with Bluetooth 5, press 'Millennium (Bluetooth)'. On newer devices, press 'Millennium (Bluetooth LE)' instead.
- Press 'OK'.
- As soon as a grey bar appears in the display, press 'Millennium Chess'.
- As soon as the connection has been established, a green Bluetooth icon appears at the bottom right of the display.



At the same time, the status LED on the housing is lit up in green.

Note: If the Bluetooth icon is lit up in red, it was not possible to establish a connection to the receiver. Repeat the procedure until a connection has been established.

You can now use **Chess for Android** and deploy various chess engines – and easily and conveniently play on your ChessGenius Exclusive board.

3.4 Connecting to iOS devices

- From the App Store, download the app '**HIARCS CHESS**' to your iPhone or iPad. Please note: These are two different apps, which are not compatible with each other.

If you have already installed a **HIARCS CHESS** app on your device, the update is free of charge for you.

Open the app and press '**Connect**'.

- The green status LED on the device should now be lit up.



You can now take advantage of the wide range of configuration options that **HIARCS CHESS** offers, and easily and conveniently play on your ChessGenius Exclusive board.

3.5 Connecting to a PC

Connect the ChessLink to your PC using a USB cable (not included). Then follow the instructions contained in the manual for the respective chess program.

4 Disposal



Dispose of packing materials in an environmentally friendly manner by using the relevant collection containers provided for the purpose.



According to EC Directive 2012/19/EU, the device must be disposed of properly at the end of its service life. For more information, please contact your local waste disposal company or your municipal administration.

5 Warranty and import

Please contact your local dealer where you bought this product.

Product development & import by
MILLENNIUM 2000 GmbH
Heisenbergbogen 1 (Dornach)
85609 Aschheim, Germany
www.computerchess.com

Copyright © 2018, MILLENNIUM 2000 GmbH, Aschheim, Germany.

M825 ChessVolt

User Manual

Charging ChessVolt:

If necessary, disconnect ChessVolt from the chess computer. Connect ChessVolt with the M820 adapter.

ChessVolt will now automatically charge.

While the charging process is taking place, ChessVolt is unable to also operate a chess computer.

Ending charging:

Once the LEDs show that ChessVolt is charged, disconnect ChessVolt from the M820 adapter.

Using ChessVolt:

Once ChessVolt has been charged, connect it to one of the following chess computers to operate the chess computer:

M820, M822, M823, M824, M830.

ChessVolt switches on automatically if it recognises the connection.

ChessVolt switches off automatically when it no longer has sufficient charge to power the chess computer.

When ChessVolt is switched off, you can switch it on by pressing the power button once.

When ChessVolt is switched on, you can switch it off by pressing the power button twice.

M825 ChessVolt

LEDs during charging:

	LED1	LED2	LED3	LED4
Full	On	On	On	On
75%	On	On	On	Flashes
50%-75%	On	On	Flashes	Off
25%-50%	On	Flashes	Off	Off
< 25%	Flashes	Off	Off	Off

LEDs while playing with the chess computer:

	LED1	LED2	LED3	LED4
75%	On	On	On	On
50%-75%	On	On	On	Off
25%-50%	On	On	Off	Off
3%-25%	On	Off	Off	Off
< 3%	Flashes	Off	Off	Off

Technical data:

3.7 V 12.000 mAH rechargeable battery

Input: 9V 1A

Output: 9V 0.6A

M825 ChessVolt

Safety instructions:

To be operated in a dry indoor place. Do not open. Do not cover. Do not short-circuit. Check regularly for damage. Stop using if damaged. Do not subject to extreme conditions such as heat (direct sunlight) or moisture. If necessary, observe the safety instructions of the chess computer which you are operating with the M825. Do not dispose of this product with domestic waste; contact your local authority regarding disposal options.

Imported by
Millennium 2000 GmbH
Heisenbergbogen 1
85609 Aschheim, Germany
www.computerchess.com

If you have any questions, please contact the dealer from which you obtained the product.

Luxe Cabinet

Instruction

Setup instructions

1. Place the Exclusive Board on a table with the top facing down. Please place a clean blanket under it in order to avoid scratches to the wooden board.
2. Place this instruction on the underside of the board so that the instruction covers the complete board evenly.
3. Locate the four self-adhesive plastic foam mounts on the cut out areas.
4. Rotate the board and press it on the table so that the plastic foam mounts are evenly secured.
5. Now place the board on the Luxus Cabinet, adjust it so that the plastic foam mounts sit in the centre of the counterparts.

IMPORTANT: The board is now fixed laterally but can be removed at any time. If you wish to transport the system, please remove the board beforehand.

Compatibility & operation

The Millennium Luxus Cabinet is provided for the operation of the following components:

1. Millennium Exclusive chessboard
2. Millennium M825 ChessVolt
3. Millennium M822 ChessLink

With this, the Exclusive Board becomes a full-featured E-board, which you can operate independent of the mains.

Using the outside switch you can switch the above-named components ON or OFF externally. The switch is illuminated as soon as the light is on the components are switched ON.

Note:

- See to it that the main switch of the ChessLink always remains ON.
- You absolutely require a ChessVolt in order to be able to use the electrical components of the system.

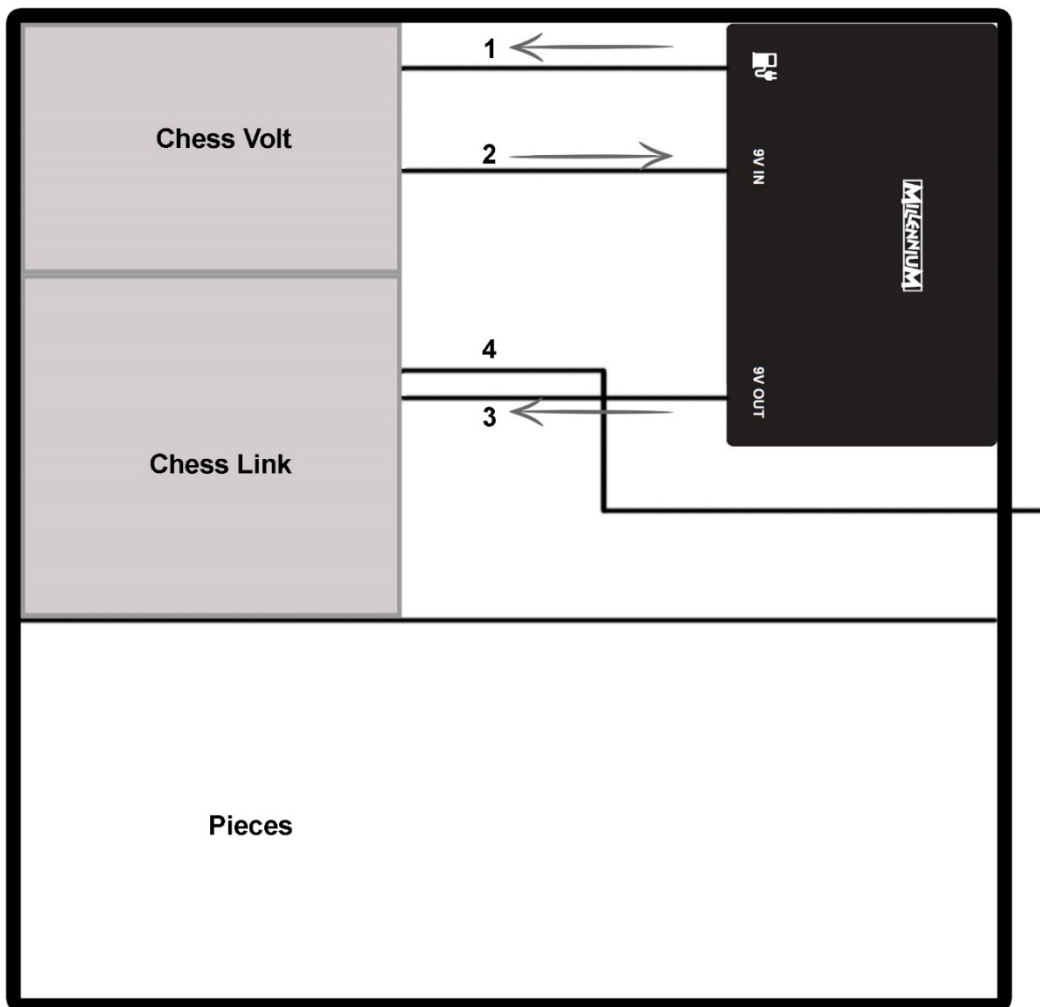
If you wish to connect the system to a chess computer module of type M823 or M820 proceed as follows:

1. Remove both connection cables (3 and 4) of the ChessLink in the drawer.
2. Lead power cable 3 out of the drawer and connect this to the chess computer module
3. Connect the chess computer module with the board as normal.

Now you can use the chess computer with the board as usual.

Connect the electrical components

Please connect the device as follows:



Connect the system as follows:

1. Cable: Charging cable for the ChessVolt
2. Cable: Power supply from the ChessVolt for the Luxus Cabinet control module
3. Cable: Power supply from the ChessLink to the board
4. Cable: Data cable from the ChessLink to the board

Notes for the connection of the components:

1. You absolutely require a ChessVolt M825 in order to be able to use the electrical components of the system.
2. Switch ON the main switch of the ChessLink before assembly and always keep this switched ON
3. Use cable ties in order to stow the cable properly.
4. Feed the data cable through the drawer and box, before inserting the drawer into the box.

Safety information, disposal and contact with the manufacturer

Safety instructions

- Use exclusively original Millennium components as described in this manual, which are approved for the Millennium Exclusive 9V system.
- Please take note of the user manual for the necessary ancillary products M822 ChessLink and M825 ChessVolt.
- Switch OFF the system if you do not use it.
- Charge the inner ChessVolt regularly.
- Following the charging process disconnect the mains adaptor from the Luxus Cabinet,
- Use only the Millennium 9V mains adaptor which is supplied with this chess computer.

Disposal



Dispose of packing materials in an environmentally friendly manner by using the relevant collection containers provided.



According to EC Directive 2012/19/EU, the device must be disposed of properly at the end of its service life. Suitable parts of the device will then be recycled, reducing environmental pollution. For more information, please contact your local waste disposal company or your municipal administration.

<p>Manufacturer's contact data Free of charge Service-Hotline (08:00 – 17:00h):</p> <ul style="list-style-type: none">• Germany: +49 (0)800 – 64 55 366• Austria: +43 (0)800 – 28 18 29• Switzerland: +41 (0)800 – 83 51 28 <p>Email: support@millennium2000.de</p>	<p>Millennium service centre Reiherstrasse 2 D-35708 Haiger, Germany Tel.: +49 (0)2773 7441 222 Fax: +49 (0)2773 7441 221</p>
---	---

Product development by:

MILLENNIUM 2000 GmbH Heisenbergbogen 1 (Dornach), D-85609, Germany
www.computerchess.com

NOTE: This product is not protected against the effects of electrostatic charges, strong electromagnetic radiation or other electrical interference, as malfunctioning as a result of these conditions is not critical.

Modification of specifications (especially in respect of technical advances) reserved and errors excepted.

This user manual was carefully compiled, and its contents carefully checked for accuracy. If, despite all expectation, these instructions nevertheless contain errors, this shall not constitute grounds for any claims. This user manual, including excerpts thereof, may not be reproduced without prior written permission.

Copyright © 2020, MILLENNIUM 2000 GmbH, Aschheim, Germany.