



Relays, Contactors & Switches > Switches > Hardware & Seals



Switch Boot Accessory Type: **Key Lock**

Style: **Special**

### Features

#### Product Type Features

Product Type	Spare Key
Switch Boot Accessory Type	Key Lock
Style	Special

#### Configuration Features

Configuration (Pole-Throw)	Single Pole - Single Throw
----------------------------	----------------------------

#### Termination Features

Termination Type	Screw Type
------------------	------------

#### Mechanical Attachment

Screw & Hole Thread Size	3/4 – 24 UNS-2A
--------------------------	-----------------

#### Housing Features

Process Sealed	No
----------------	----

### Product Compliance

[For compliance documentation, visit the product page on TE.com>](#)

EU RoHS Directive 2011/65/EU	Not Compliant
EU ELV Directive 2000/53/EC	Not Compliant
China RoHS 2 Directive MIIT Order No 32, 2016	Restricted Materials Above Threshold
EU REACH Regulation (EC) No. 1907/2006	Current ECHA Candidate List: JAN 2021 (211) Candidate List Declared Against: JAN 2021 (211) SVHC > Threshold: Pb (1.5% in component) <small>Article Safe Usage Statements:</small>



Do not eat, drink or smoke when using this product. Wash thoroughly after handling. Recycle if possible and dispose of the article by following all applicable governmental regulations relevant to your geographic location.

Halogen Content

Low Halogen - Br, Cl, F, I < 900 ppm per homogenous material. Also BFR/CFR/PVC Free

Solder Process Capability

Not applicable for solder process capability

Product Compliance Disclaimer

This information is provided based on reasonable inquiry of our suppliers and represents our current actual knowledge based on the information they provided. This information is subject to change. The part numbers that TE has identified as EU RoHS compliant have a maximum concentration of 0.1% by weight in homogenous materials for lead, hexavalent chromium, mercury, PBB, PBDE, DBP, BBP, DEHP, DIBP, and 0.01% for cadmium, or qualify for an exemption to these limits as defined in the Annexes of Directive 2011/65/EU (RoHS2). Finished electrical and electronic equipment products will be CE marked as required by Directive 2011/65/EU. Components may not be CE marked. Additionally, the part numbers that TE has identified as EU ELV compliant have a maximum concentration of 0.1% by weight in homogenous materials for lead, hexavalent chromium, and mercury, and 0.01% for cadmium, or qualify for an exemption to these limits as defined in the Annexes of Directive 2000/53/EC (ELV). Regarding the REACH Regulation, the information TE provides on SVHC in articles for this part number is based on the latest European Chemicals Agency (ECHA) 'Guidance on requirements for substances in articles' posted at this URL: <https://echa.europa.eu/guidance-documents/guidance-on-reach>

### Compatible Parts



TE Part # 1437597-7  
2SKF132AEL01=NON UL KEYLOCK

### Customers Also Bought



TE Part #2-1437597-3  
2SWK132AL101=NON UL KEYLOCKS  
S



TE Part #1423155-5  
GPD=RELAY, 125VDC



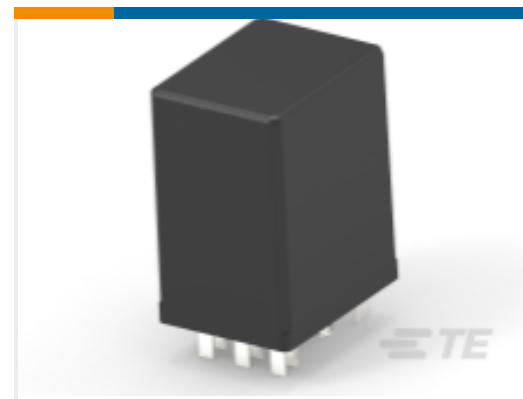
TE Part #7-2176306-5  
RP 1E 0.1W 6K81 0.1% 25PPM 5K RL



TE Part #4-1393817-4  
CRADLE P/W RELAY V23003



TE Part #YDTS20F25-37SEV001  
D38999: Square Flange, 25-37 insert



TE Part #1423795-1  
R10-E1W2-S3.2K=R10



TE Part #1958510-1  
SPLICE,STRATO-THERM, BUTT, HR, 2  
AWG



TE Part #596971-000  
22759/43-8-2



TE Part #3-647479-2  
02P MTA156 CONN ASSY 18AWG  
ORA



TE Part #5415632-2  
VERTICAL BNC PCB JACK

## Documents

[Datasheets & Catalog Pages](#)

[Alcoswitch Products](#)

English