



Alcoswitch | Alcoswitch KFS

TE Internal #: 8-1437621-9

Alcoswitch KFS, Switch Knobs, Knob, Aluminum, Straight Knurl Knob Design, .25in [6.35mm] Shaft Size, .618in [15.7mm] Switch Knob Diameter, Black Matte

[View on TE.com >](#)

Relays, Contactors & Switches > Switches > Switch Knobs



Switch Knob Product Type: **Knob**

Switch Knob Material: **Aluminum**

Knob Design: **Straight Knurl**

Shaft Size: **6.35 mm [ .25 in ]**

Switch Knob Diameter: **15.7 mm [ .618 in ]**

## Features

### Product Type Features

Switch Knob Product Type	Knob
--------------------------	------

### Configuration Features

Skirt	With
Spinner	Without
Spin Plate	Without
Knob Design	Straight Knurl

### Body Features

Switch Knob Material	Aluminum
Switch Knob Color	Black Matte

### Dimensions

Shaft Size	6.35 mm[.25 in]
Switch Knob Diameter	15.7 mm[.618 in]

### Identification Marking

Indicator Style	Line
Indicator Location	On Skirt

## Product Compliance

[For compliance documentation, visit the product page on TE.com>](#)



EU RoHS Directive 2011/65/EU	Compliant
EU ELV Directive 2000/53/EC	Compliant
China RoHS 2 Directive MIIT Order No 32, 2016	No Restricted Materials Above Threshold
EU REACH Regulation (EC) No. 1907/2006	Current ECHA Candidate List: JAN 2021 (211) Candidate List Declared Against: JAN 2021 (211) Does not contain REACH SVHC
Halogen Content	Low Halogen - Br, Cl, F, I < 900 ppm per homogenous material. Also BFR/CFR/PVC Free
Solder Process Capability	Not applicable for solder process capability

Product Compliance Disclaimer

This information is provided based on reasonable inquiry of our suppliers and represents our current actual knowledge based on the information they provided. This information is subject to change. The part numbers that TE has identified as EU RoHS compliant have a maximum concentration of 0.1% by weight in homogenous materials for lead, hexavalent chromium, mercury, PBB, PBDE, DBP, BBP, DEHP, DIBP, and 0.01% for cadmium, or qualify for an exemption to these limits as defined in the Annexes of Directive 2011/65/EU (RoHS2). Finished electrical and electronic equipment products will be CE marked as required by Directive 2011/65/EU. Components may not be CE marked. Additionally, the part numbers that TE has identified as EU ELV compliant have a maximum concentration of 0.1% by weight in homogenous materials for lead, hexavalent chromium, and mercury, and 0.01% for cadmium, or qualify for an exemption to these limits as defined in the Annexes of Directive 2000/53/EC (ELV). Regarding the REACH Regulation, the information TE provides on SVHC in articles for this part number is based on the latest European Chemicals Agency (ECHA) 'Guidance on requirements for substances in articles' posted at this URL: <https://echa.europa.eu/guidance-documents/guidance-on-reach>

## Compatible Parts



Also in the Series | [Alcoswitch KFS](#)



Switch Knobs(3)

## Customers Also Bought



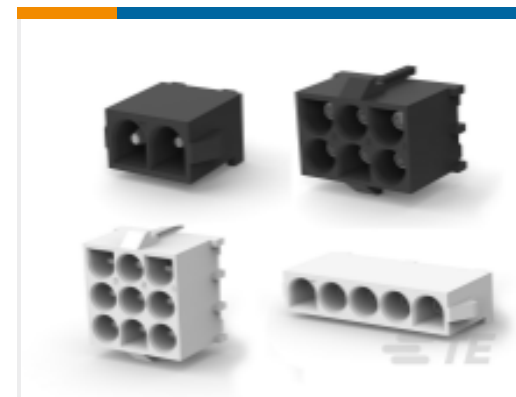
TE Part #1-1393258-5  
Force Guided Power Relay, 2 Poles



TE Part #1-66105-8  
III+ SKT,24-20,30AU/FL,SMPACK



TE Part #2-2176390-3  
RQ 1206 1K96 0.1% 10PPM 5K RL



TE Part #1-2213755-3  
REFLOW UNIVERSAL MATE-N-LOK CONNECTORS



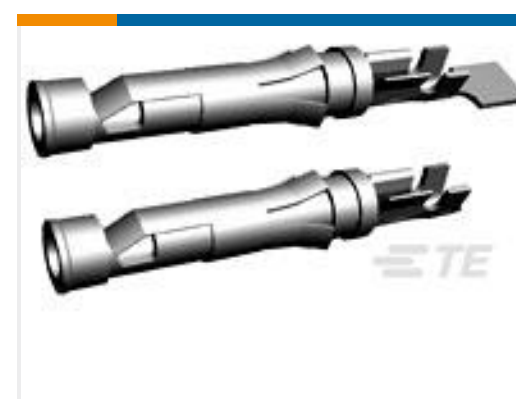
TE Part #206708-1  
CPC SERIES 6



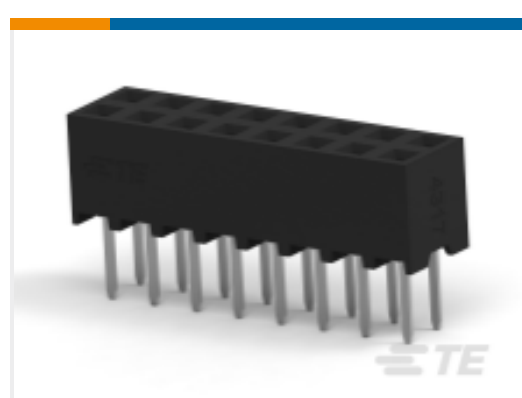
TE Part #0460-204-12141  
DEUTSCH SOLID CONTACTS



TE Part #YDTS24F13-35PEV001  
D38999: Jam Nut, 13-35 Insert



TE Part #1-66360-0  
III+ SKT,18-14,TIN-LEAD,SMPACK



TE Part #1-2314824-6  
16P,2MM,B-B,REC,DRVT,2.7,0.1AU,TB, W/CAP

## Documents

### Product Drawings

[KFS600B1/4=KNOB ALUM BLACK ANO](#)

English

### Datasheets & Catalog Pages

[SWITCHES\\_CORE\\_PROGRAM\\_CATALOG](#)

English