

8-1609148-4 ✓ ACTIVE

Corcom | Corcom APH

TE Internal #: 8-1609148-4

Corcom APH, 3-Phase Filters, 600A 3-Phase Filter Current Rating,
Bus Bar Input, Bus Bar Output, DELTA (3 wire + ground)

[View on TE.com >](#)



EMI Filters > Power Line Filters > 3-Phase Filters > CORCOM APH SERIES 3-PHASE FILTERS



3-Phase Filter Current Rating: **600 A**

Filter Input Termination Type: **Bus Bar**

Filter Output Termination Type: **Bus Bar**

Wiring Configuration: **DELTA (3 wire + ground)**

Continuous Operating Voltage (Max): **520 VAC**

[All CORCOM APH SERIES 3-PHASE FILTERS \(10\)](#)

Features

Product Type Features

| | |
|--------------------------------|------------|
| Filter Type | Power Line |
| Filtering Requirements | Filtered |
| Filter Input Termination Type | Bus Bar |
| Filter Output Termination Type | Bus Bar |

Configuration Features

| | |
|----------------------|-------------------------|
| Wiring Configuration | DELTA (3 wire + ground) |
|----------------------|-------------------------|

Electrical Characteristics

| | |
|--------------------------------------|---------|
| Leakage Current (Max) (250VAC, 50Hz) | 222 mA |
| 3-Phase Filter Current Rating | 600 A |
| Continuous Operating Voltage (Max) | 520 VAC |

Mechanical Attachment

| | |
|-------------|---------|
| Mount Style | Flanged |
|-------------|---------|

Usage Conditions

| | |
|-----------------------------|-------------|
| Operating Temperature Range | -10 – 50 °C |
|-----------------------------|-------------|

Product Compliance

[For compliance documentation, visit the product page on TE.com>](#)



| | |
|---|---|
| EU RoHS Directive 2011/65/EU | Compliant |
| EU ELV Directive 2000/53/EC | Compliant |
| China RoHS 2 Directive MIIT Order No 32, 2016 | No Restricted Materials Above Threshold |
| EU REACH Regulation (EC) No. 1907/2006 | Current ECHA Candidate List: JAN 2021 (211) Candidate List Declared Against: JAN 2021 (211) Does not contain REACH SVHC |
| Halogen Content | Low Halogen - Br, Cl, F, I < 900 ppm per homogenous material. Also BFR/CFR/PVC Free |
| Solder Process Capability | Hand solderable with lead free solder |

Product Compliance Disclaimer

This information is provided based on reasonable inquiry of our suppliers and represents our current actual knowledge based on the information they provided. This information is subject to change. The part numbers that TE has identified as EU RoHS compliant have a maximum concentration of 0.1% by weight in homogenous materials for lead, hexavalent chromium, mercury, PBB, PBDE, DBP, BBP, DEHP, DIBP, and 0.01% for cadmium, or qualify for an exemption to these limits as defined in the Annexes of Directive 2011/65/EU (RoHS2). Finished electrical and electronic equipment products will be CE marked as required by Directive 2011/65/EU. Components may not be CE marked. Additionally, the part numbers that TE has identified as EU ELV compliant have a maximum concentration of 0.1% by weight in homogenous materials for lead, hexavalent chromium, and mercury, and 0.01% for cadmium, or qualify for an exemption to these limits as defined in the Annexes of Directive 2000/53/EC (ELV). Regarding the REACH Regulation, the information TE provides on SVHC in articles for this part number is based on the latest European Chemicals Agency (ECHA) 'Guidance on requirements for substances in articles' posted at this URL: <https://echa.europa.eu/guidance-documents/guidance-on-reach>

Compatible Parts

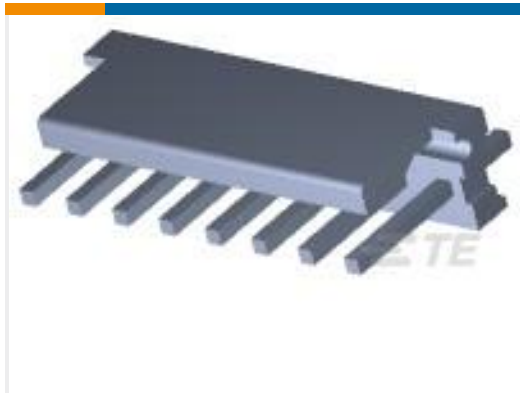


Also in the Series | Corcom APH



3-Phase Filters(10)

Customers Also Bought



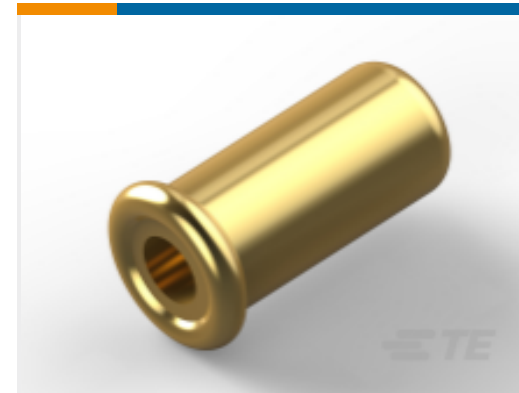
TE Part #3-641119-8
08P MTA156 HDR ASSY FL/ST LF



TE Part #102159-1
AMP-LATCH UNIVERSAL HEADERS



TE Part #208484-3
CMC SERIES 3



TE Part #1-331677-1
Mini Spring Sockets: Closed Bottom, 5A



TE Part #1-640455-6
Polyester Right Angle PCB Header:
2.54mm, Wire-to-Board, MTA 100



TE Part #5-146308-8
16 MODII HDR DRRA B/A .100



TE Part #2-1803019-1
CRIMPER, INSULATION O



TE Part #4-641119-5
15P MTA156 HDR ASSY FL/ST LF



TE Part #4-644460-5
15P MTA156 CONN ASSY 18AWG
ORA



TE Part #66461-5
SKT,.062 DIA,.025 SQ POST,LP

Documents

Product Drawings

[600APH12L=F8397](#)

English

CAD Files

[3D PDF](#)

[3D](#)

Customer View Model

[ENG_CVM_CVM_8-1609148-4_B.2d_dxf.zip](#)



English

Customer View Model

[ENG_CVM_CVM_8-1609148-4_B.3d_igs.zip](#)

English

Customer View Model

[ENG_CVM_CVM_8-1609148-4_B.3d_stp.zip](#)

English

By downloading the CAD file I accept and agree to the [Terms and Conditions](#) of use.

Datasheets & Catalog Pages

[1654001_CORCOM_PRODUCT_GUIDE](#)

English

[Corcom APH/APS Series 3-phase high current EMI filters](#)

English

[Corcom Combined Selector Charts](#)

English