

9-1609148-0 ✓ ACTIVE

[Corcom](#) | [Corcom APH](#)

TE Internal #: 9-1609148-0

Corcom APH, 3-Phase Filters, 1000A 3-Phase Filter Current Rating,  
Bus Bar Input, Bus Bar Output, DELTA (3 wire + ground)

[View on TE.com >](#)



[EMI Filters](#) > [Power Line Filters](#) > [3-Phase Filters](#) > [CORCOM APH SERIES 3-PHASE FILTERS](#)



3-Phase Filter Current Rating: **1000 A**

Filter Input Termination Type: **Bus Bar**

Filter Output Termination Type: **Bus Bar**

Wiring Configuration: **DELTA (3 wire + ground)**

Continuous Operating Voltage (Max): **690 VAC**

[All CORCOM APH SERIES 3-PHASE FILTERS \(10\)](#)

## Features

### Product Type Features

|                                |            |
|--------------------------------|------------|
| Filter Type                    | Power Line |
| Filtering Requirements         | Filtered   |
| Filter Input Termination Type  | Bus Bar    |
| Filter Output Termination Type | Bus Bar    |

### Configuration Features

|                      |                         |
|----------------------|-------------------------|
| Wiring Configuration | DELTA (3 wire + ground) |
|----------------------|-------------------------|

### Electrical Characteristics

|                                      |         |
|--------------------------------------|---------|
| Leakage Current (Max) (250VAC, 50Hz) | 330 mA  |
| 3-Phase Filter Current Rating        | 1000 A  |
| Continuous Operating Voltage (Max)   | 690 VAC |

### Mechanical Attachment

|             |         |
|-------------|---------|
| Mount Style | Flanged |
|-------------|---------|

### Usage Conditions

|                             |             |
|-----------------------------|-------------|
| Operating Temperature Range | -10 – 50 °C |
|-----------------------------|-------------|

## Product Compliance

[For compliance documentation, visit the product page on TE.com>](#)



|   |   |
|---|---|
| EU RoHS Directive 2011/65/EU                  | Compliant   |
| EU ELV Directive 2000/53/EC                   | Compliant   |
| China RoHS 2 Directive MIIT Order No 32, 2016 | No Restricted Materials Above Threshold   |
| EU REACH Regulation (EC) No. 1907/2006        | Current ECHA Candidate List: JAN 2021 (211)<br>Candidate List Declared Against: JUN 2020 (209)<br>SVHC > Threshold:<br>Not Yet Reviewed |
| Halogen Content                               | Low Halogen - Br, Cl, F, I < 900 ppm per homogenous material. Also BFR/CFR/PVC Free   |
| Solder Process Capability                     | Not applicable for solder process capability  |

Product Compliance Disclaimer

This information is provided based on reasonable inquiry of our suppliers and represents our current actual knowledge based on the information they provided. This information is subject to change. The part numbers that TE has identified as EU RoHS compliant have a maximum concentration of 0.1% by weight in homogenous materials for lead, hexavalent chromium, mercury, PBB, PBDE, DBP, BBP, DEHP, DIBP, and 0.01% for cadmium, or qualify for an exemption to these limits as defined in the Annexes of Directive 2011/65/EU (RoHS2). Finished electrical and electronic equipment products will be CE marked as required by Directive 2011/65/EU. Components may not be CE marked. Additionally, the part numbers that TE has identified as EU ELV compliant have a maximum concentration of 0.1% by weight in homogenous materials for lead, hexavalent chromium, and mercury, and 0.01% for cadmium, or qualify for an exemption to these limits as defined in the Annexes of Directive 2000/53/EC (ELV). Regarding the REACH Regulation, the information TE provides on SVHC in articles for this part number is based on the latest European Chemicals Agency (ECHA) 'Guidance on requirements for substances in articles' posted at this URL: <https://echa.europa.eu/guidance-documents/guidance-on-reach>

## Compatible Parts

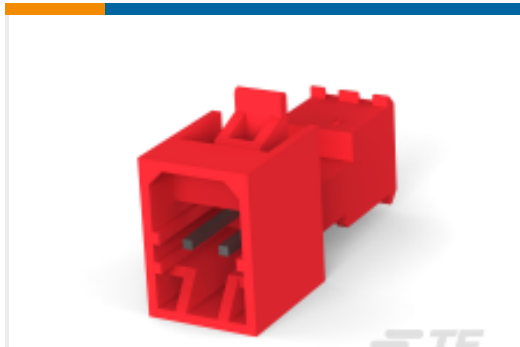


## Also in the Series | Corcom APH



3-Phase Filters(10)

## Customers Also Bought



TE Part #3-647001-2  
Nylon Tin Plated Plug: 2.54mm, With Mating Alignment, MTA 100



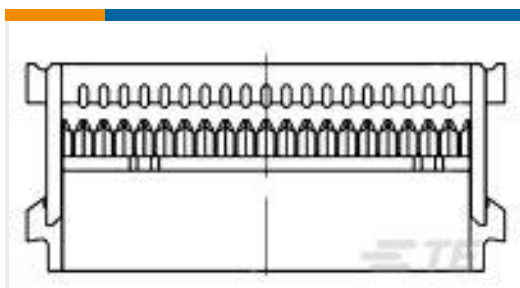
TE Part #2-644488-6  
Polyester Right Angle PCB Header: 2.54mm, Shrouded, With Mating Alignment



TE Part #1658540-1  
D-Sub Connector Contacts: Pin, Brass, Signal, Size 20



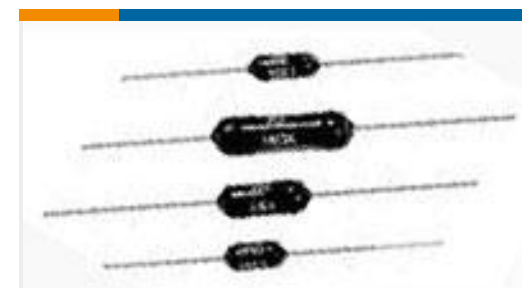
TE Part #535090-4  
096 EURO TYPE C RECEPT ST ASSY



TE Part #1658526-8  
609-1430LF FEM SOCKET, LEAD FREE



TE Part #1-1393767-5  
R10-E2X2-V700=R10



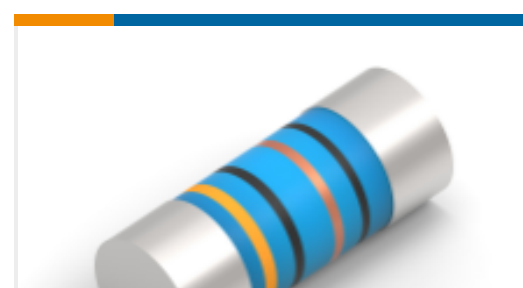
TE Part #5-1879666-4  
H8 475K 0.1% 15PPM



TE Part #5-1437595-2  
TRD11F10WL=SUB MINI ROCKER BLA



TE Part #3-1622796-7  
YR1 0.1% 6K19



TE Part #8-2176316-9  
MELF SMA-A 120K 1% 50PPM 0207 1W

## Documents

### Product Drawings

[1000APH12P=F8403](#)

English

[1000APH12P=F8403](#)

English

### CAD Files

[3D PDF](#)

[3D](#)



**Customer View Model**

[ENG\\_CVM\\_CVM\\_9-1609148-0\\_B.2d\\_dxf.zip](#)

English

**Customer View Model**

[ENG\\_CVM\\_CVM\\_9-1609148-0\\_B.3d\\_igs.zip](#)

English

**Customer View Model**

[ENG\\_CVM\\_CVM\\_9-1609148-0\\_B.3d\\_stp.zip](#)

English

By downloading the CAD file I accept and agree to the [Terms and Conditions](#) of use.

**Datasheets & Catalog Pages**

[1654001\\_CORCOM\\_PRODUCT\\_GUIDE](#)

English

[Corcom APH/APS Series 3-phase high current EMI filters](#)

English

[Corcom Combined Selector Charts](#)

English