

2274000-1 ✓ ACTIVE

TE Internal #: 2274000-1

SFP/SFP+/zSFP+, Cage Assembly, Data Rate (Max) 32 Gb/s, EMI

Springs, zSFP+ Thermally Enhanced, Included Lightpipe, Port

Matrix Configuration 1 x 1

[View on TE.com >](#)



Connectors > Pluggable IO Connectors & Cages > SFP/SFP+/zSFP+ > zSFP+ Cage Assembly: EMI Springs



Pluggable I/O Product Type: **Cage Assembly**

Data Rate (Max): **32 Gb/s**

EMI Containment Feature Type: **EMI Springs**

Pluggable I/O Applications: **zSFP+ Thermally Enhanced**

Included Lightpipe: **Yes**

[All zSFP+ Cage Assembly: EMI Springs \(25\)](#)

Features

Product Type Features

Form Factor	zSFP+
Cage Type	Single
Pluggable I/O Product Type	Cage Assembly
Connector System	Cable-to-Board
Sealable	No
Connector & Contact Terminates To	Printed Circuit Board

Configuration Features

Port Matrix Configuration	1 x 1
Lightpipe Configuration	Dual Round
Lightpipe Style	Standard
Lightpipe Profile	Standard
Number of Ports	1

Electrical Characteristics

Data Rate (Max)	32 Gb/s
-----------------	---------

Termination Features

Termination Method to Printed Circuit Board	Through Hole - Press-Fit
---	--------------------------



Mechanical Attachment

PCB Mounting Style	Through Hole - Press-Fit
Connector Mounting Type	Board Mount

Housing Features

Cage Material	Nickel Silver Alloy
---------------	---------------------

Dimensions

Tail Length	3 mm[.118 in]
PCB Thickness (Recommended)	1.5 mm[.059 in]

Usage Conditions

Operating Temperature Range	-55 – 105 °C[-67 – 221 °F]
-----------------------------	----------------------------

Operation/Application

Heat Sink Compatible	No
For Use With Pluggable I/O Products	zSFP+ SMT Connector
Pluggable I/O Applications	zSFP+ Thermally Enhanced
Circuit Application	Signal

Packaging Features

Packaging Method	Tray
------------------	------

Other

EMI Containment Feature Type	EMI Springs
Included Lightpipe	Yes

Product Compliance

[For compliance documentation, visit the product page on TE.com>](#)

EU RoHS Directive 2011/65/EU	Compliant
EU ELV Directive 2000/53/EC	Compliant
China RoHS 2 Directive MIIT Order No 32, 2016	No Restricted Materials Above Threshold
EU REACH Regulation (EC) No. 1907/2006	Current ECHA Candidate List: JAN 2021 (211) Candidate List Declared Against: JAN 2021 (211) Does not contain REACH SVHC
Halogen Content	Not Low Halogen - contains Br or Cl > 900 ppm.
Solder Process Capability	Not applicable for solder process capability



Product Compliance Disclaimer

This information is provided based on reasonable inquiry of our suppliers and represents our current actual knowledge based on the information they provided. This information is subject to change. The part numbers that TE has identified as EU RoHS compliant have a maximum concentration of 0.1% by weight in homogenous materials for lead, hexavalent chromium, mercury, PBB, PBDE, DBP, BBP, DEHP, DIBP, and 0.01% for cadmium, or qualify for an exemption to these limits as defined in the Annexes of Directive 2011/65/EU (RoHS2). Finished electrical and electronic equipment products will be CE marked as required by Directive 2011/65/EU. Components may not be CE marked. Additionally, the part numbers that TE has identified as EU ELV compliant have a maximum concentration of 0.1% by weight in homogenous materials for lead, hexavalent chromium, and mercury, and 0.01% for cadmium, or qualify for an exemption to these limits as defined in the Annexes of Directive 2000/53/EC (ELV). Regarding the REACH Regulation, the information TE provides on SVHC in articles for this part number is based on the latest European Chemicals Agency (ECHA) 'Guidance on requirements for substances in articles' posted at this URL: <https://echa.europa.eu/guidance-documents/guidance-on-reach>

Compatible Parts



TE Part # CAT-C11-N490333
QSFP28-Four SFP+ Cable Assembly: 30 AWG



TE Part # CAT-C11-N490325
QSFP28-Four SFP+ Cable Assembly: 26 AWG



TE Part # CAT-C11-N4901142
SFP28 to SFP28 Cable Assembly: 32 AWG



TE Part # CAT-C11-N4901114
SFP28 to SFP28 Cable Assembly: 30 AWG



TE Part # CAT-C11-N49011
SFP28 to SFP28 Cable Assembly: 26 AWG



TE Part # CAT-Q17-N49011
QSFP56-Four SFP56 Cable Assembly: 30 AWG



TE Part # CAT-Q17-N490333
QSFP56-Four SFP56 Cable Assembly: 26 AWG



TE Part # CAT-C11-G28037
SFP56 to SFP56 Cable Assembly: 30 AWG



TE Part # CAT-C11-G28
SFP56 to SFP56 Cable Assembly: 26 AWG



TE Part # 2821262-1
SFP28 DIRECT ATTACH CA, 0.5M, 33AWG



TE Part # 4-2334985-2
SFP56 DIRECT ATTACH CA, 1M, 32AWG



TE Part # CAT-C11-N490111
SFP28 to SFP28 Cable Assembly: 28 AWG



TE Part # 2821262-2
SFP28 DIRECT ATTACH CA, 1.0M,
33AWG



TE Part # 2821262-3
SFP28 DIRECT ATTACH CA, 1.5M,
33AWG

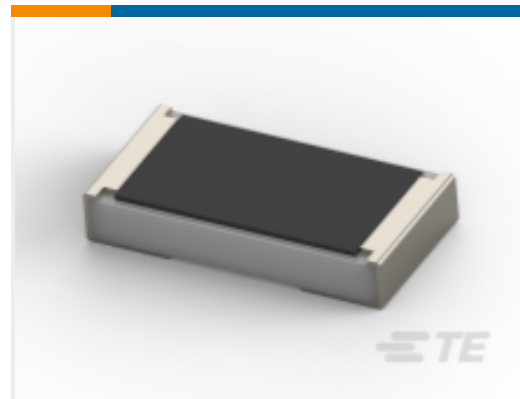


TE Part # 2821262-4
SFP28 DIRECT ATTACH CA, 2.0M,
33AWG

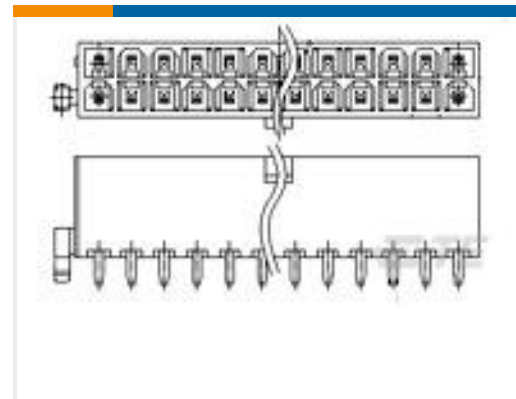
Customers Also Bought



TE Part #1-1658694-1
AMP-LATCH UNIVERSAL HEADERS



TE Part #1-2176231-2
SMD Power Resistor: 3 Watt, 1% Tol



TE Part #1-1775099-3
ATX PWR CONN 1 BDLK 24 POS



TE Part #103972-2
8X3 MTE RCPT SR RIBBED .100CL



TE Part #1-2333134-3
DYNAMIC 1100 REC AND TAB HSG



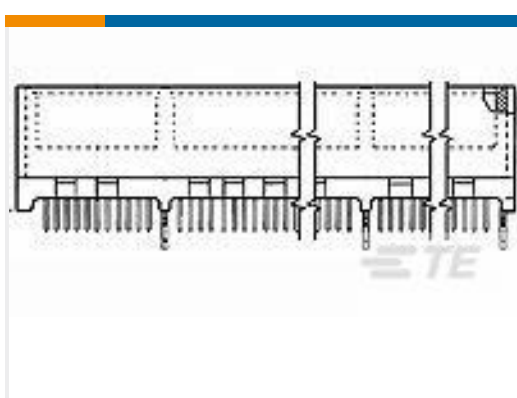
TE Part #103817-2
12 MODII HDR 3RST UNSHRD .100



TE Part #1-2007492-7
SFP+ Stacked Cage Assemblies



TE Part #87227-2
04 MODII HDR DRST UNSHRD .100



TE Part #1-5145168-2
STANDARD EDGE .050 SERIES 92
DUAL ASSY

Documents

Product Drawings

ZSFP+ 1X1 CAGE ASSEMBLY PRESSFIT WITH LP

English

CAD Files

3D PDF

3D

Customer View Model

ENG_CVM_CVM_2274000-1_A.2d_dxf.zip



English

Customer View Model

[ENG_CVM_CVM_2274000-1_A.3d_igs.zip](#)

English

Customer View Model

[ENG_CVM_CVM_2274000-1_A.3d_stp.zip](#)

English

By downloading the CAD file I accept and agree to the [Terms and Conditions](#) of use.

Datasheets & Catalog Pages

[zSFP+ Interconnect Brochure](#)

English

Product Specifications

[Application Specification](#)

English