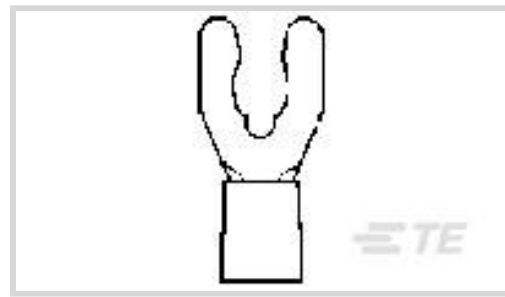


SOLISTRAND

TE Internal #: 53266-2

Ring Terminals & Spade Terminals, Spring Spade, 22AWG Wire Size, .3 – 1.42mm² Wire Size, 509 – 3260CMA Wire Size, M3.5 / #6[View on TE.com >](#)

Terminals & Splices > Ring Terminals & Spade Terminals

Terminal & Splice Type: **Spring Spade**Wire Size: **509 – 3260 CMA**Ring & Spade Stud Size: **#6, M3.5**

Features

Product Type Features

Shape Description	SPADE-030
Ring & Spade Stud Size	#6, M3.5
Ring & Spade Barrel Type	Closed Barrel
Sealable	No
Insulated	No
Ring & Spade Wire/Cable Type	Regular Wire
Support Style	Non - Insulation Support

Configuration Features

Terminal Angle	Straight
----------------	----------

Body Features

Ring & Spade Plating Material	Tin
-------------------------------	-----

Contact Features

Terminal & Splice Type	Spring Spade
Ring & Spade Terminal Orientation	Straight

Mechanical Attachment

Wire Insulation Support	Without
-------------------------	---------

Dimensions

Wire Size	509 – 3260 CMA
Stud Diameter	3.56 mm[.14 in]
Tongue Thickness	.79 mm[.031 in]



Ring & Spade Overall Length	14.63 mm[.576 in]
-----------------------------	-------------------

Barrel Inside Diameter	1.65 mm[.065 in]
------------------------	------------------

Usage Conditions

Insulation Requirement	Uninsulated
------------------------	-------------

Operating Temperature Range	170 °C[338 °F]
-----------------------------	----------------

Operation/Application

Heavy Duty	No
------------	----

Industry Standards

Government Qualified	No
----------------------	----

Packaging Features

Packaging Quantity	1000
--------------------	------

Ring & Spade Packaging Method	Box
-------------------------------	-----

Other

Line	Budget
------	--------

Product Compliance

[For compliance documentation, visit the product page on TE.com>](#)

EU RoHS Directive 2011/65/EU	Compliant
------------------------------	-----------

EU ELV Directive 2000/53/EC	Compliant
-----------------------------	-----------

China RoHS 2 Directive MIIT Order No 32, 2016	No Restricted Materials Above Threshold
---	---

EU REACH Regulation (EC) No. 1907/2006	Current ECHA Candidate List: JAN 2021 (211) Candidate List Declared Against: JAN 2021 (211) Does not contain REACH SVHC
--	---

Halogen Content	Not Yet Reviewed for halogen content
-----------------	--------------------------------------

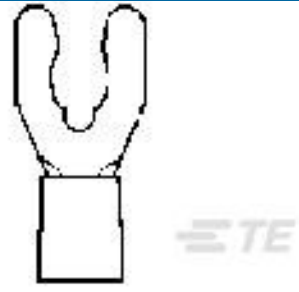
Solder Process Capability	Not applicable for solder process capability
---------------------------	--

Product Compliance Disclaimer

This information is provided based on reasonable inquiry of our suppliers and represents our current actual knowledge based on the information they provided. This information is subject to change. The part numbers that TE has identified as EU RoHS compliant have a maximum concentration of 0.1% by weight in homogenous materials for lead, hexavalent chromium, mercury, PBB, PBDE, DBP, BBP, DEHP, DIBP, and 0.01% for cadmium, or qualify for an exemption to these limits as defined in the Annexes of Directive 2011/65/EU (RoHS2). Finished electrical and electronic equipment products will be CE marked as required by Directive 2011/65/EU. Components may not be CE marked. Additionally, the part numbers that TE has identified as EU ELV compliant have a maximum concentration of 0.1% by weight in homogenous materials for lead, hexavalent chromium, and mercury, and 0.01% for cadmium, or qualify for an exemption to these limits as defined in the Annexes of Directive 2000/53/EC (ELV). Regarding the REACH Regulation, the information TE provides on SVHC in articles for this part number is based on the latest European Chemicals Agency (ECHA) 'Guidance on

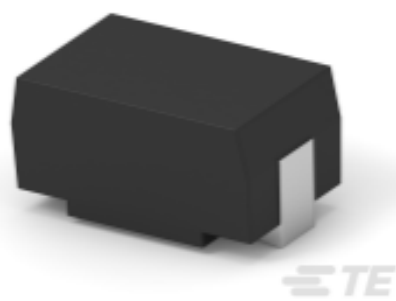
requirements for substances in articles' posted at this URL: <https://echa.europa.eu/guidance-documents/guidance-on-reach>

Compatible Parts

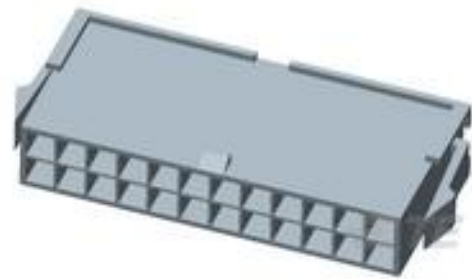


TE Part # 53006-1
BUDG SPR SPD 22-16COM22-18MIL6

Customers Also Bought



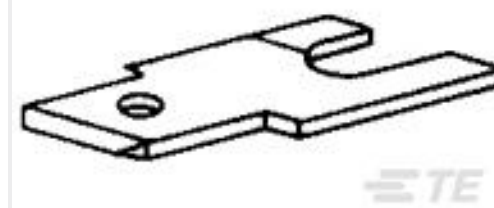
TE Part #3-1879234-5
SMD Power Resistor: 7 Watt, 200-2M
Ohm



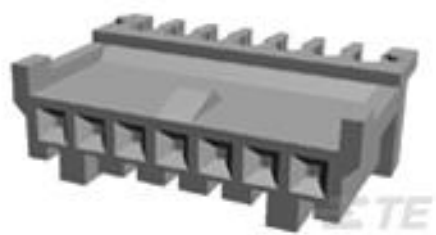
TE Part #1969599-6
6P PM PLUG VAL-U-LOK V2



TE Part #2108422-1
ENCODER 9P BASE ENTRY HSG



TE Part #60443-1
FASTON .187 SERIES (4.8 MM) TAB BR



TE Part #172051-8
8P MTEI RCPT HSG ASY 22



TE Part #2-2176075-7
3640 0201 2.7nH +/-0.2nH 1K RL



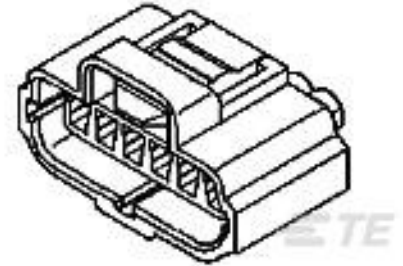
TE Part #1534415-8
DUOPL POW FEM CON8P



TE Part #1-350777-5
02P UMNL V0 PLUG HSG GREEN



TE Part #1326122-1
52WAY LAC "SINGLE GEAR" SHIELD



TE Part #184124-1
6 POS./6 CIRC. PLUG ASSY,KEY B

Documents

Product Drawings

BUDG SP SPD 22-16COMM22-18MIL6

English



CAD Files

3D PDF

3D

Customer View Model

[ENG_CVM_CVM_53266-2_M.2d_dxf.zip](#)

English

Customer View Model

[ENG_CVM_CVM_53266-2_M.3d_igs.zip](#)

English

Customer View Model

[ENG_CVM_CVM_53266-2_M.3d_stp.zip](#)

English

By downloading the CAD file I accept and agree to the [Terms and Conditions](#) of use.

Instruction Sheets

Instruction Sheet (U.S.)

English

Agency Approvals

UL Report

English