



CIR

TE Internal #: Y5015-000000078010

CIR, Circular Connector Adapters, 22 Shell Size, Cable-to-Cable,  
Wire & Cable, Power & Signal, Operating Temperature Range -55 –  
125 °C [-67 – 257 °F]

[View on TE.com >](#)

Connectors > Circular Connectors > Circular Connector Accessories > Circular Connector Adapters >

STRAIGHT ADAPTER HEATSHRINK - TYPE SCHA



Circular Connector Shell Size: 22  
Connector System: Cable-to-Cable  
Connector & Contact Terminates To: Wire & Cable  
Circuit Application: Power & Signal  
Operating Temperature Range: -55 – 125 °C [-67 – 257 °F]

[All STRAIGHT ADAPTER HEATSHRINK - TYPE SCHA \(8\)](#)

Features

Product Type Features

|                                   |                |
|-----------------------------------|----------------|
| Product Type                      | Accessory      |
| Accessory Type                    | Adapter        |
| Connector System                  | Cable-to-Cable |
| Connector & Contact Terminates To | Wire & Cable   |

Body Features

|                 |       |
|-----------------|-------|
| Connector Color | Black |
|-----------------|-------|

Housing Features

|                               |    |
|-------------------------------|----|
| Circular Connector Shell Size | 22 |
|-------------------------------|----|

Usage Conditions

|                             |                            |
|-----------------------------|----------------------------|
| Operating Temperature Range | -55 – 125 °C[-67 – 257 °F] |
|-----------------------------|----------------------------|

Operation/Application

|                     |                |
|---------------------|----------------|
| Circuit Application | Power & Signal |
|---------------------|----------------|

Packaging Features

|                    |    |
|--------------------|----|
| Packaging Quantity | 50 |
|--------------------|----|



Other

|              |            |
|--------------|------------|
| Adapter Type | Straight   |
| Comment      | Heatshrink |

Product Compliance

For compliance documentation, visit the product page on [TE.com](#)>

|   |   |
|---|---|
| EU RoHS Directive 2011/65/EU                  | Compliant with Exemptions   |
| EU ELV Directive 2000/53/EC                   | Compliant with Exemptions   |
| China RoHS 2 Directive MIIT Order No 32, 2016 | Restricted Materials Above Threshold  |
| EU REACH Regulation (EC) No. 1907/2006        | Current ECHA Candidate List: JAN 2021 (211)<br>Candidate List Declared Against: JUL 2017 (174)<br>SVHC > Threshold:<br>Not Yet Reviewed |
| Halogen Content                               | Not Yet Reviewed for halogen content  |
| Solder Process Capability                     | Not applicable for solder process capability  |

Product Compliance Disclaimer

This information is provided based on reasonable inquiry of our suppliers and represents our current actual knowledge based on the information they provided. This information is subject to change. The part numbers that TE has identified as EU RoHS compliant have a maximum concentration of 0.1% by weight in homogenous materials for lead, hexavalent chromium, mercury, PBB, PBDE, DBP, BBP, DEHP, DIBP, and 0.01% for cadmium, or qualify for an exemption to these limits as defined in the Annexes of Directive 2011/65/EU (RoHS2). Finished electrical and electronic equipment products will be CE marked as required by Directive 2011/65/EU. Components may not be CE marked. Additionally, the part numbers that TE has identified as EU ELV compliant have a maximum concentration of 0.1% by weight in homogenous materials for lead, hexavalent chromium, and mercury, and 0.01% for cadmium, or qualify for an exemption to these limits as defined in the Annexes of Directive 2000/53/EC (ELV). Regarding the REACH Regulations, TE’s information on SVHC in articles for this part number is still based on the European Chemical Agency (ECHA) ‘Guidance on requirements for substances in articles’(Version: 2, April 2011), applying the 0.1% weight on weight concentration threshold at the finished product level. TE is aware of the European Court of Justice ruling of September 10th, 2015 also known as O5A (Once An Article Always An Article) stating that, in case of ‘complex object’, the threshold for a SVHC must be applied to both the product as a whole and simultaneously to each of the articles forming part of its composition. TE has evaluated this ruling based on the new ECHA “Guidance on requirements for substances in articles” (June 2017, version 4.0) and will be updating its statements accordingly.

Compatible Parts





Also in the Series | CIR



Circular Connector Adapters(16)



Circular Connector Contact Inserts(16)



Circular Connector Hardware(8)



Circular Connector Seals(36)



Insertion & Extraction Tools(4)

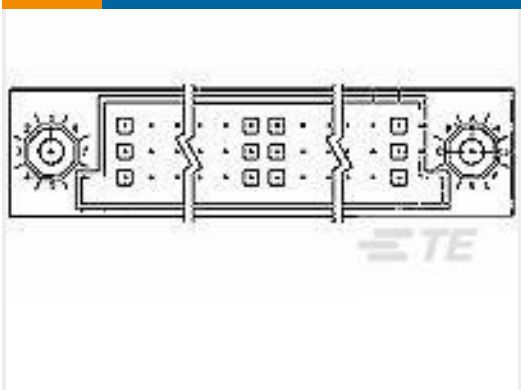


Standard Circular Connectors(36)

Customers Also Bought



TE Part #3-1879355-9  
RR03 5% 160K AMMO



TE Part #5532433-8  
ASSY,PIN,VERTICAL,HDI,LEAD-FRE



TE Part #NB07152001  
Single Wall RNF-100 Reel HS Tubing



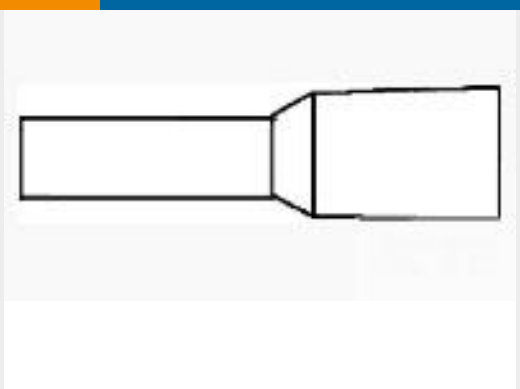
TE Part #Y5015-000000100017  
PLUG WITH RFI GROUNDING - MALE - CIRH



TE Part #Y5015-000000005391  
PLUG WITH RFI GROUNDING - FEMALE - CIRP



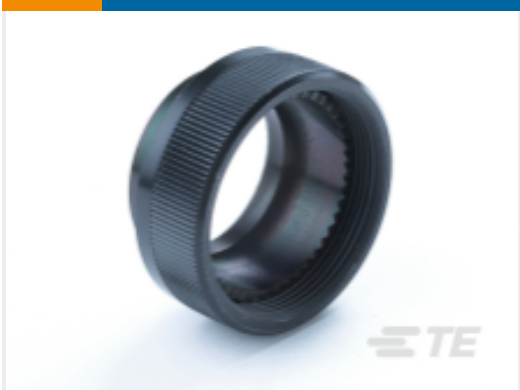
TE Part #CTJ-3D-09  
RAIL ASSY



TE Part #3-966066-0  
TUB END SLEEVE N GR



TE Part #282528-001  
81044/12-18-1



TE Part #Y5015-000000078011  
LOCKING BACK NUT



TE Part #1622793-1  
ZEROHM 0204 CERAMIC



Documents

Product Drawings

STRAIGHT HEATSHRINK SCREEN ADAPTER

French

Datasheets & Catalog Pages

CIRP Catalog

English

CIRP Catalog