



Product Compliance

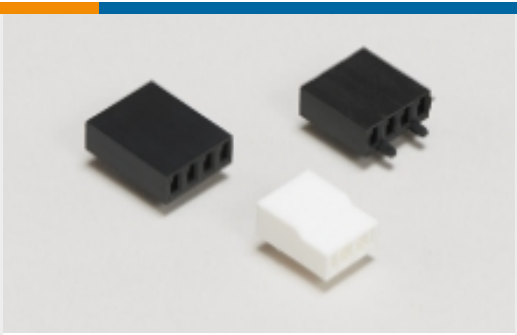
[For compliance documentation, visit the product page on TE.com>](#)

EU RoHS Directive 2011/65/EU	Compliant
EU ELV Directive 2000/53/EC	Compliant
China RoHS 2 Directive MIIT Order No 32, 2016	No Restricted Materials Above Threshold
EU REACH Regulation (EC) No. 1907/2006	Current ECHA Candidate List: JAN 2021 (211) Candidate List Declared Against: JUL 2019 (201) SVHC > Threshold: Not Yet Reviewed
Halogen Content	Low Halogen - Br, Cl, F, I < 900 ppm per homogenous material. Also BFR/CFR/PVC Free
Solder Process Capability	Not applicable for solder process capability

Product Compliance Disclaimer

This information is provided based on reasonable inquiry of our suppliers and represents our current actual knowledge based on the information they provided. This information is subject to change. The part numbers that TE has identified as EU RoHS compliant have a maximum concentration of 0.1% by weight in homogenous materials for lead, hexavalent chromium, mercury, PBB, PBDE, DBP, BBP, DEHP, DIBP, and 0.01% for cadmium, or qualify for an exemption to these limits as defined in the Annexes of Directive 2011/65/EU (RoHS2). Finished electrical and electronic equipment products will be CE marked as required by Directive 2011/65/EU. Components may not be CE marked. Additionally, the part numbers that TE has identified as EU ELV compliant have a maximum concentration of 0.1% by weight in homogenous materials for lead, hexavalent chromium, and mercury, and 0.01% for cadmium, or qualify for an exemption to these limits as defined in the Annexes of Directive 2000/53/EC (ELV). Regarding the REACH Regulation, the information TE provides on SVHC in articles for this part number is based on the latest European Chemicals Agency (ECHA) 'Guidance on requirements for substances in articles' posted at this URL: <https://echa.europa.eu/guidance-documents/guidance-on-reach>

Also in the Series | [AMP MR](#)



Board-to-Board Connector Housings(2)



Board-to-Board Jumpers & Shunts(4)



Insertion & Extraction Tools(1)



Power Cable Assemblies(1)

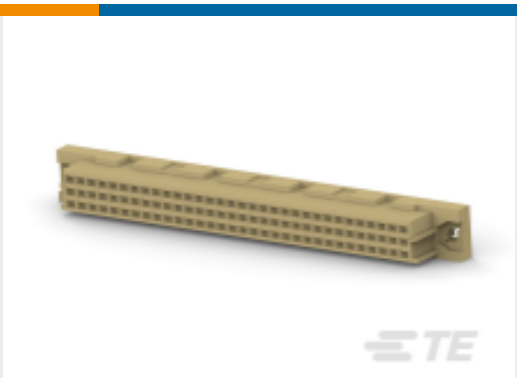


Rectangular Power Connectors(12)



Wire-to-Board Connector Assemblies & Housings(4)

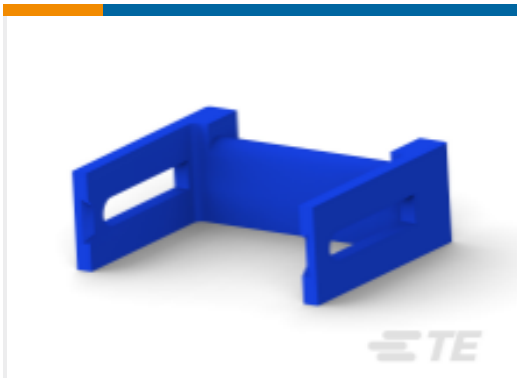
Customers Also Bought



TE Part #4-1393637-9
V42254P2263C963=PC612 FEDERLEI



TE Part #100751-1
Z-PACK/N M-HSG 3P.



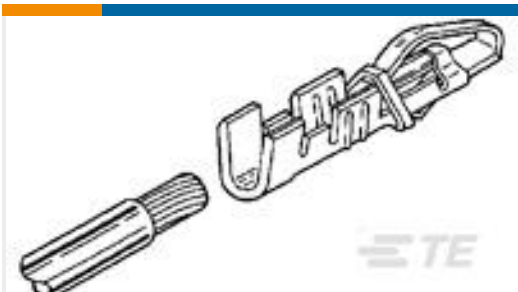
TE Part #8-1437020-6
Female Socket Connectors: Strain Relief



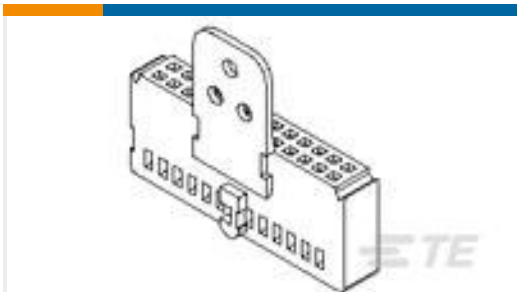
TE Part #787082-2
D-Sub Receptacle Assembly: Right Angle, 1.27mm



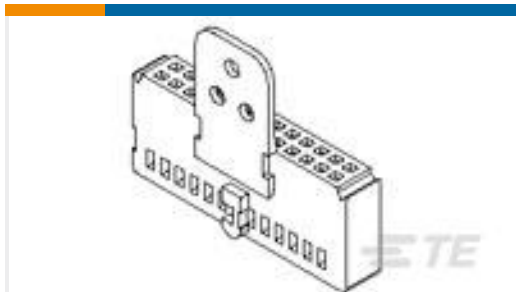
TE Part #3-640432-7
07P MTA156 CONN ASSY 20AWG YEL



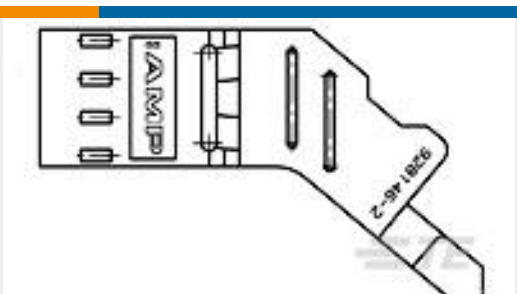
TE Part #280623-2
AMP LEAF CTC 22-18 AWG



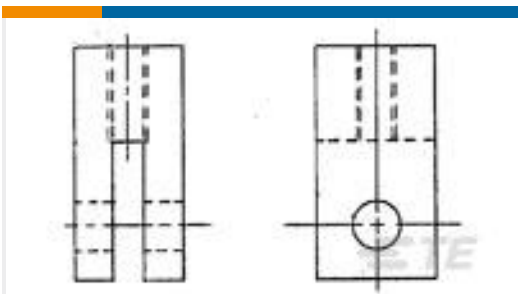
TE Part #216038-2
MOD-4 HSG+PULL TAB



TE Part #216038-4
MOD-4 HSG+PULL TAB



TE Part #928146-1
TANDEM HSG ASSY



TE Part #552656-1
BRACKET, MTG

Documents



Instruction Sheets

Instruction Sheet (U.S.)

English

AMP MODIFIED FORK CONNECTORS WITH CRIMP TYPE CONTACTS

English

Agency Approvals

Agency Approval Document

English