

42799-2 ✓ ACTIVE

FASTON | FASTON 187

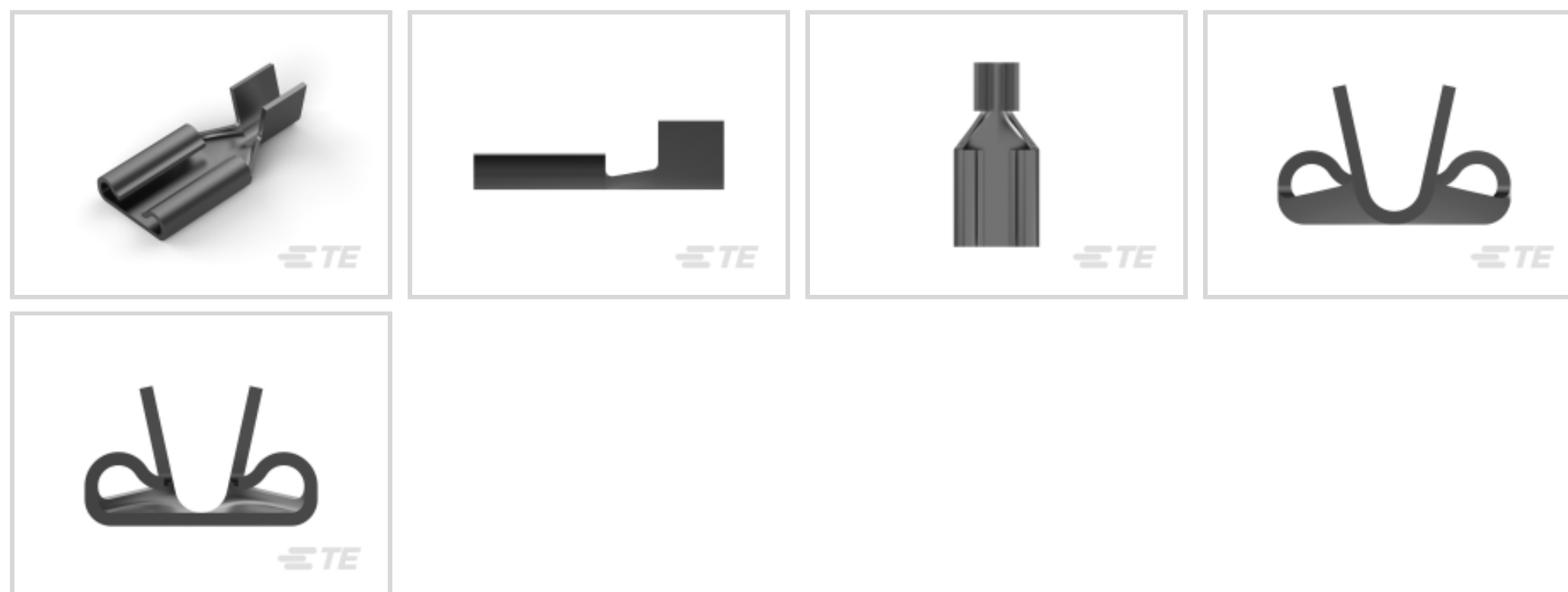
TE Internal #: 42799-2

FASTON 187, Quick Disconnects, Receptacle, 20 – 16AWG Wire Size, .51 – 1.31mm² Wire Size, Quick Disconnect Mating Tab Width 4.75 mm [.187 in]

[View on TE.com >](#)



Terminals & Splices > Quick Disconnects



Terminal & Splice Type: **Receptacle**

Wire Size: .51 – 1.31 mm²

Quick Disconnect Mating Tab Width: 4.75 mm [.187 in]

Quick Disconnect Mating Tab Thickness: .51 mm [.02 in]

Features

Product Type Features

Wire Stop	No
Wire/Cable Type	Regular Wire
Terminates To	Wire & Cable
Quick Disconnect Insertion Force	Normal
Sealable	No
Insulated	No

Configuration Features

Connection Capacity	Single
---------------------	--------

Body Features

Fully Insulated	No
Quick Disconnect Plating Material	Tin

Contact Features

Terminal Type	Receptacle
Terminal & Splice Type	Receptacle



Quick Disconnect Terminal Orientation	Straight
Contact Base Material	Brass
Crimp Type	F-Crimp
Barrel Type	Open

Mechanical Attachment

Mating Retention Type	Dimple
Wire Insulation Support	Without

Dimensions

Overall Length	12.07 mm[.475 in]
Receptacle Terminal Stock Thickness	.3 mm[.012 in]
Wire Size	.51 – 1.31 mm ²
Quick Disconnect Mating Tab Width	4.75 mm[.187 in]
Quick Disconnect Mating Tab Thickness	.51 mm[.02 in]

Usage Conditions

Insulation Requirement	Uninsulated
Operating Temperature Range	-40 – 110 °C[-40 – 230 °F]

Industry Standards

UL Rating	Listed
CSA Certified	Yes

Packaging Features

Packaging Quantity	25000
Quick Disconnect Packaging Method	Strip/Reel

Product Compliance

[For compliance documentation, visit the product page on TE.com>](#)

EU RoHS Directive 2011/65/EU	Compliant
EU ELV Directive 2000/53/EC	Compliant
China RoHS 2 Directive MIIT Order No 32, 2016	No Restricted Materials Above Threshold
EU REACH Regulation (EC) No. 1907/2006	Current ECHA Candidate List: JAN 2021 (211) Candidate List Declared Against: JAN 2021 (211) Does not contain REACH SVHC
Halogen Content	Low Halogen - Br, Cl, F, I < 900 ppm per

homogenous material. Also BFR/CFR/PVC Free

Solder Process Capability

Not applicable for solder process capability

Product Compliance Disclaimer

This information is provided based on reasonable inquiry of our suppliers and represents our current actual knowledge based on the information they provided. This information is subject to change. The part numbers that TE has identified as EU RoHS compliant have a maximum concentration of 0.1% by weight in homogenous materials for lead, hexavalent chromium, mercury, PBB, PBDE, DBP, BBP, DEHP, DIBP, and 0.01% for cadmium, or qualify for an exemption to these limits as defined in the Annexes of Directive 2011/65/EU (RoHS2). Finished electrical and electronic equipment products will be CE marked as required by Directive 2011/65/EU. Components may not be CE marked. Additionally, the part numbers that TE has identified as EU ELV compliant have a maximum concentration of 0.1% by weight in homogenous materials for lead, hexavalent chromium, and mercury, and 0.01% for cadmium, or qualify for an exemption to these limits as defined in the Annexes of Directive 2000/53/EC (ELV). Regarding the REACH Regulation, the information TE provides on SVHC in articles for this part number is based on the latest European Chemicals Agency (ECHA) 'Guidance on requirements for substances in articles' posted at this URL: <https://echa.europa.eu/guidance-documents/guidance-on-reach>

Compatible Parts



TE Part # 2-2150452-1
OCEAN_2.0_Applicator-E-090F



TE Part # 2-2150452-2
OCEAN_2.0_Applicator-E-090FA



TE Part # 2150452-1
OCEAN_2.0_Applicator-E-090F



TE Part # 2150452-2
OCEAN_2.0_Applicator-E-090FA



TE Part # 7-2150452-1
OCEAN_2.0_Applicator-E-090F

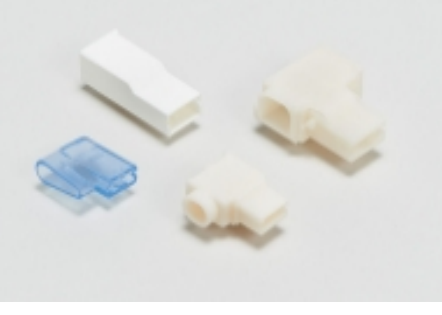


TE Part # 7-2150452-2
OCEAN_2.0_Applicator-E-090FA




TE Part # 7-2150452-7
OCEAN_2.0_SPARE_PART_KIT-090F


Also in the Series | FASTON 187




Crimp Terminal Housings(40)



Insertion & Extraction Tools(1)



Joints & Splices(1)



PCB Terminals(48)

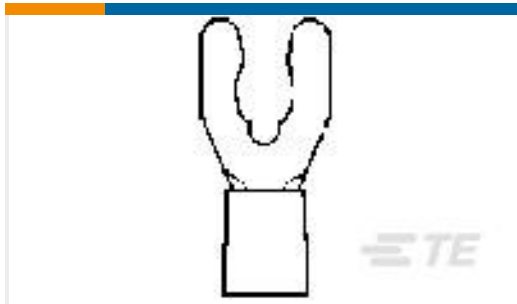
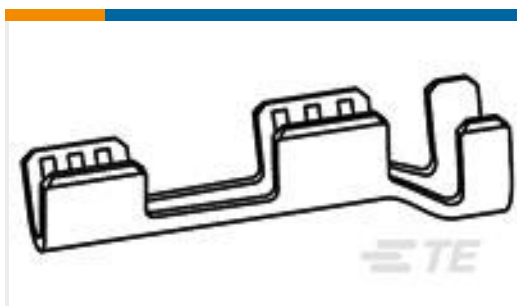
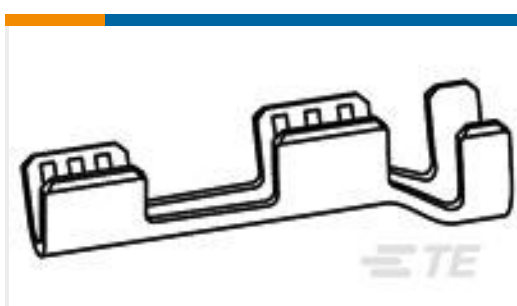
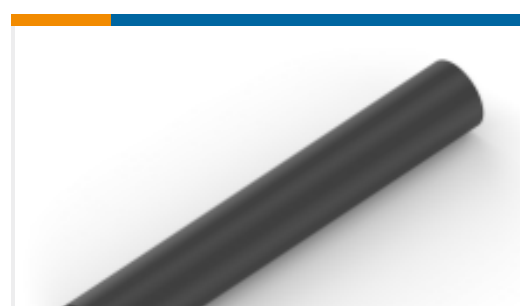


Quick Disconnects(222)



Splices(1)

Customers Also Bought

TE Part #53120-2
SOLIS SP SPD 22-16COM22-18MIL6TE Part #52263-4
TERMINAL R PG 8 10TE Part #2-1971777-2
PTL TPA HWI 1 X 2 NATURALTE Part #1438246-2
SPLICE, BUTT, HEATER WIRE 18-16AWG PTPBRTE Part #62419-1
SPLICE 1600-4100 .020 TPBRTE Part #1633365-1
CRIMPER, WIRE SPECIAL FANVIL
REPRESENTATION ONLYTE Part #40990
WELD TAB IS 22-18 020STSTTE Part #62419-3
SPLICE 18-16/18-14 AWG .020 NPSTTE Part #EK4614-000
ES2000-NO.4-B7-0-0.75IN

Documents

Product Drawings

[FASTON 187 RECEPTACLE 20-16 AWG TPBR](#)

English

CAD Files

[3D PDF](#)

3D

[Customer View Model](#)

[ENG_CVM_CVM_42799-2_AR.2d_dxf.zip](#)



English

Customer View Model

[ENG_CVM_CVM_42799-2_AR.3d_igs.zip](#)

English

Customer View Model

[ENG_CVM_CVM_42799-2_AR.3d_stp.zip](#)

English

By downloading the CAD file I accept and agree to the [Terms and Conditions](#) of use.

Datasheets & Catalog Pages

[82004 FASTON Terminals \(Insulated and Uninsulated\) Catalog - FASTON Receptacles Section](#)

English

Product Specifications

[Application Specification](#)

English

Product Environmental Compliance

[TE Material Declaration](#)

English

Agency Approvals

[UL Report](#)

English