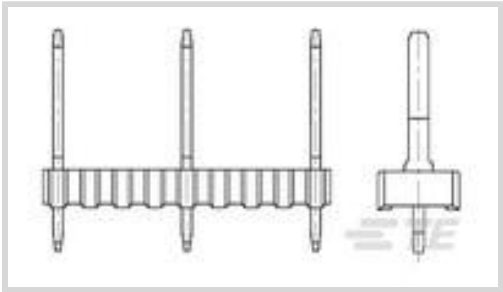




Connectors > PCB Connectors > Board-to-Board Connectors > Board-to-Board Headers & Receptacles



PCB Connector Assembly Type: **PCB Mount Header**

PCB Mount Orientation: **Vertical**

Number of Positions: **3**

Centerline (Pitch): **10.16 mm [.4 in]**

Header Type: **Unshrouded**

Features

Product Type Features

PCB Connector Assembly Type	PCB Mount Header
Header Type	Unshrouded
Sealable	No
Connector & Contact Terminates To	Printed Circuit Board

Configuration Features

Number of Rows	1
Connector Contact Load Condition	Selectively Loaded
PCB Mount Orientation	Vertical
Number of Positions	3

Body Features

Connector Profile	Standard
-------------------	----------

Contact Features

Contact Mating Area Length	10 mm[.394 in]
PCB Contact Termination Area Plating Material Thickness	2.5 – 5 µm
Mating Tab Width	1.6 mm[.063 in]
Mating Tab Thickness	.8 mm[.031 in]
Contact Underplating Material	Nickel
Contact Base Material	CuZn



Contact Mating Area Plating Material	Gold
Contact Type	Pin

Termination Features

Rectangular Termination Post & Tail Thickness	.8 mm[.031 in]
Rectangular Termination Post & Tail Width	.9 mm[.035 in]
Termination Post & Tail Length	3.4 mm[.134 in]
Termination Method to Printed Circuit Board	Through Hole - Solder

Mechanical Attachment

Mating Alignment	Without
PCB Mount Retention	Without

Housing Features

Centerline (Pitch)	10.16 mm[.4 in]
Housing Color	Green
Housing Material	PBTP

Usage Conditions

Housing Temperature Rating	Standard
----------------------------	----------

Operation/Application

Solder Process Feature	Board Standoff
------------------------	----------------

Packaging Features

Packaging Quantity	200
Packaging Method	Box & Carton

Other

Position Locations Omitted	2, 3, 4
----------------------------	---------

Product Compliance

For compliance documentation, visit the product page on TE.com>

EU RoHS Directive 2011/65/EU	Compliant
EU ELV Directive 2000/53/EC	Compliant
China RoHS 2 Directive MIIT Order No 32, 2016	No Restricted Materials Above Threshold
EU REACH Regulation (EC) No. 1907/2006	Current ECHA Candidate List: JAN 2021 (211) Candidate List Declared Against: JAN 2020 (205)



SVHC > Threshold:
Not Yet Reviewed

Halogen Content	Not Low Halogen - contains Br or Cl > 900 ppm.
Solder Process Capability	Wave solder capable to 240°C


Product Compliance Disclaimer

This information is provided based on reasonable inquiry of our suppliers and represents our current actual knowledge based on the information they provided. This information is subject to change. The part numbers that TE has identified as EU RoHS compliant have a maximum concentration of 0.1% by weight in homogenous materials for lead, hexavalent chromium, mercury, PBB, PBDE, DBP, BBP, DEHP, DIBP, and 0.01% for cadmium, or qualify for an exemption to these limits as defined in the Annexes of Directive 2011/65/EU (RoHS2). Finished electrical and electronic equipment products will be CE marked as required by Directive 2011/65/EU. Components may not be CE marked. Additionally, the part numbers that TE has identified as EU ELV compliant have a maximum concentration of 0.1% by weight in homogenous materials for lead, hexavalent chromium, and mercury, and 0.01% for cadmium, or qualify for an exemption to these limits as defined in the Annexes of Directive 2000/53/EC (ELV). Regarding the REACH Regulation, the information TE provides on SVHC in articles for this part number is based on the latest European Chemicals Agency (ECHA) 'Guidance on requirements for substances in articles' posted at this URL: <https://echa.europa.eu/guidance-documents/guidance-on-reach>

Compatible Parts

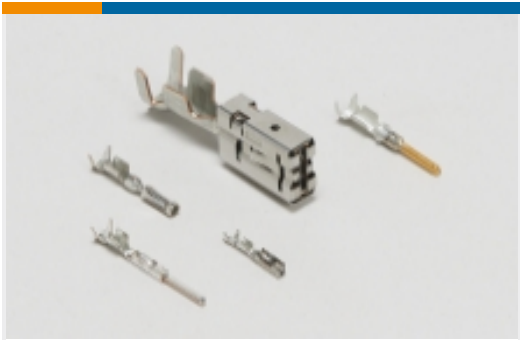


TE Part # 87988-3
03 MODI BDMNT RCPT SR .156CL




TE Part # 87984-3
03 MODI BDMNT RCPT SR .156CL

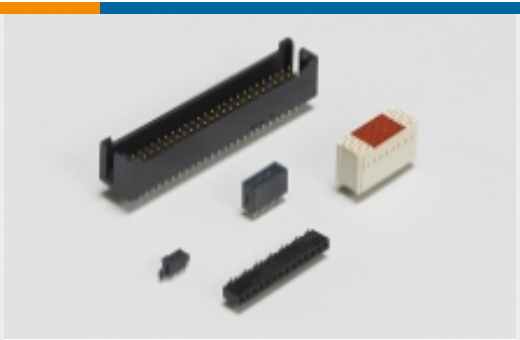
Also in the Series | AMPMODU MOD 1



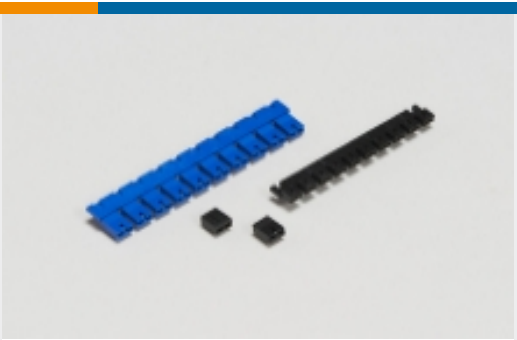
Automotive Terminals(6)



Board-to-Board Connector Contacts (104)



Board-to-Board Headers & Receptacles(372)



Board-to-Board Jumpers & Shunts(5)



Insertion & Extraction Tools(1)



PCB Connector Keying(2)



Wire-to-Board Connector Assemblies & Housings(44)



Wire-to-Board Connector Contacts(2)

Customers Also Bought



TE Part #0462-209-16141
DEUTSCH SOLID CONTACTS



TE Part #1-1623787-0
Wirewound Resistor: Vertical Mount



TE Part #1-2176317-1
MELF SMA-A 3M3 1% 50PPM 0207 1W



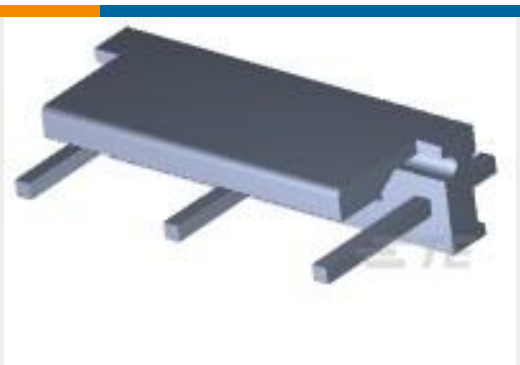
TE Part #W6P
DEUTSCH DT WEDGELOCKS



TE Part #114017-ZZ
DEUTSCH SEALING PLUGS



TE Part #1-480698-0
02P UMNL PLUG HSG NATL



TE Part #1-643464-1
07P MTA156 HDR ASY FL/STR,OMIT

Documents

Product Drawings

MOD1 STIFTLAIS 3P

English

Product Specifications

Product Specification

English