

770198-1 ✓ ACTIVE

Timer Connector System

TE Internal #: 770198-1

Timer Connector System, Crimp Terminal Housings, Receptacle, Receptacle, 24 Position, Straight, Natural Crimp Terminal Housing Housing Color, Nylon

[View on TE.com >](#)



Terminals & Splices > Terminal Housings, Insulation Sleeves & Blocks > Crimp Terminal Housings



Terminal & Splice Type: **Receptacle**

Housing Type: **Receptacle**

Number of Crimp Terminal Housing Positions: **24**

Crimp Terminal Housing Terminal Orientation: **Straight**

Crimp Terminal Housing Housing Color: **Natural**

### Features

#### Product Type Features

Product Type	Terminal Housing
Terminates To	Wire & Cable
Connector System	Wire-to-Board, Wire-to-Wire
Housing Type	Receptacle
Sealable	No
Insulated	No

#### Configuration Features

Number of Crimp Terminal Housing Positions	24
--	----

#### Body Features

Crimp Terminal Housing Housing Color	Natural
Crimp Terminal Housing Mating Retention	With
Crimp Terminal Housing Mating Alignment	With

#### Contact Features

Terminal & Splice Type	Receptacle
------------------------	------------



Crimp Terminal Housing Terminal Orientation	Straight
---	----------

### Mechanical Attachment

Mating Alignment Type	Polarization
Mating Retention Type	Latch
Crimp Terminal Housing Mounting Style	Cable Mount (Free-Hanging)

### Housing Features

Crimp Terminal Housing Housing Material	Nylon
---	-------

### Dimensions

Length	51.56 mm
Width	19.63 mm
Crimp Terminal Housing Centerline	5.59 mm [.22 in]

### Usage Conditions

Operating Temperature Range	-40 – 105 °C [-40 – 221 °F]
-----------------------------	-----------------------------

### Packaging Features

Packaging Quantity	1
Crimp Terminal Housing Packaging Method	Carton

## Product Compliance

[For compliance documentation, visit the product page on TE.com>](#)

EU RoHS Directive 2011/65/EU	Compliant
EU ELV Directive 2000/53/EC	Compliant
China RoHS 2 Directive MIIT Order No 32, 2016	No Restricted Materials Above Threshold
EU REACH Regulation (EC) No. 1907/2006	Current ECHA Candidate List: JAN 2021 (211) Candidate List Declared Against: JAN 2021 (211) Does not contain REACH SVHC
Halogen Content	Low Halogen - Br, Cl, F, I < 900 ppm per homogenous material. Also BFR/CFR/PVC Free
Solder Process Capability	Not applicable for solder process capability

#### Product Compliance Disclaimer

This information is provided based on reasonable inquiry of our suppliers and represents our current actual knowledge based on the information they provided. This information is subject to change. The part numbers that TE has identified as EU RoHS compliant have a maximum concentration of 0.1% by weight in homogenous materials for lead, hexavalent

chromium, mercury, PBB, PBDE, DBP, BBP, DEHP, DIBP, and 0.01% for cadmium, or qualify for an exemption to these limits as defined in the Annexes of Directive 2011/65/EU (RoHS2). Finished electrical and electronic equipment products will be CE marked as required by Directive 2011/65/EU. Components may not be CE marked. Additionally, the part numbers that TE has identified as EU ELV compliant have a maximum concentration of 0.1% by weight in homogenous materials for lead, hexavalent chromium, and mercury, and 0.01% for cadmium, or qualify for an exemption to these limits as defined in the Annexes of Directive 2000/53/EC (ELV). Regarding the REACH Regulation, the information TE provides on SVHC in articles for this part number is based on the latest European Chemicals Agency (ECHA) 'Guidance on requirements for substances in articles' posted at this URL: <https://echa.europa.eu/guidance-documents/guidance-on-reach>

## Compatible Parts



TE Part # 521085-1  
DRYER .250 HOUSING NYLON 6/6



TE Part # 770199-1  
TIMER CONNECTOR 18P HSG R/H BK NYLON6/6



TE Part # 521190-2  
PLUG 3 POS 125 HOUSING NYLON 6 /6



TE Part # 521190-4  
PLUG 5 POS 125 HOUSING NYLON 6 /6



TE Part # 521152-2  
PLUG 4 CIR 125 HOUSING NYLON 66 /6



TE Part # 1-770197-2  
TIMER CONNECTOR 24P HSG R/H NAT PA66 V-0



TE Part # 521073-2  
PLUG .125 HOUSING NYLON 66/6



TE Part # 521116-2  
MOTOR HOUSING HOUSING NYLON VO BLACK



TE Part # 521163-2  
POWER BLADE HSG 12P NYLON BLACK




TE Part # 521165-1  
MOTOR HOUSING HOUSING BLACK NYLON 6/6

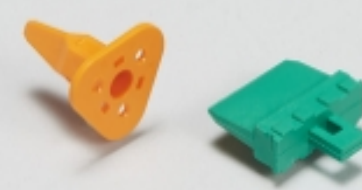


TE Part # 521986-1  
POWER BLADE HSG 10P NYLON NATURAL


## Also in the Series | Timer Connector System




Automotive Connector Caps & Covers (11)



Automotive Connector Locks & Position Assurance(16)



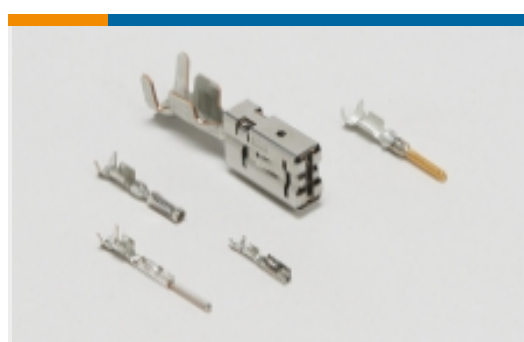
Automotive Headers(79)



Automotive Housings(212)



Automotive Seals & Cavity Plugs(31)



Automotive Terminals(143)



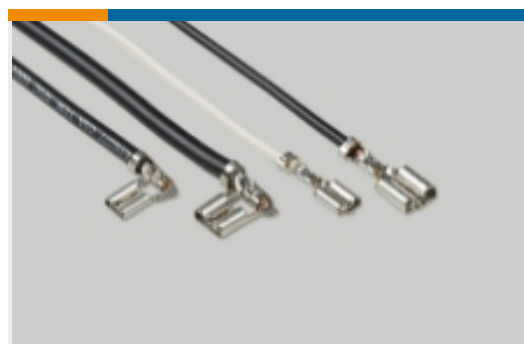
Crimp Terminal Housings(13)



Insertion & Extraction Tools(20)



Other Automotive Connector Accessories(1)



Quick Disconnects(4)

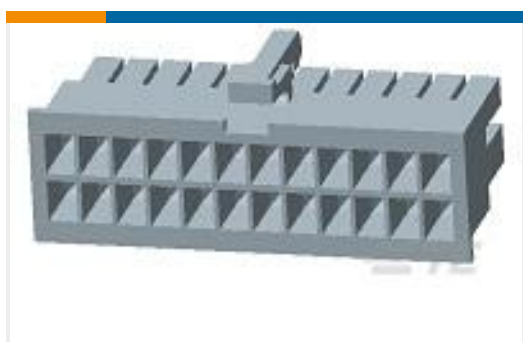
## Customers Also Bought



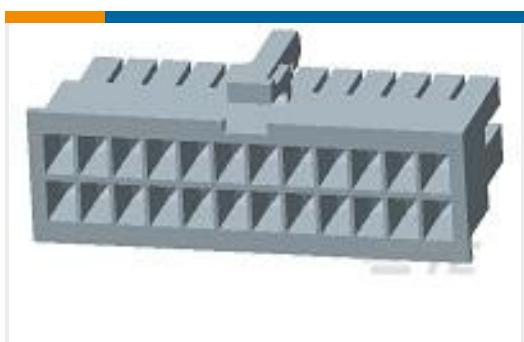
TE Part #1241981-4  
STD TIMER HOUSING 4P (NATURE)



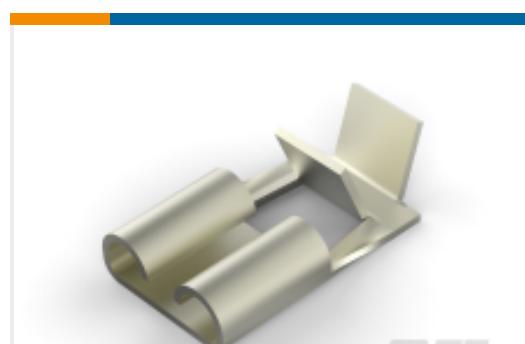
TE Part #1-2296205-0  
10P RCPT VAL-U-LOK GWT/V0



TE Part #1-2296205-2  
12P RCPT VAL-U-LOK GWT/V0



TE Part #1-2296205-4  
14P RCPT VAL-U-LOK GWT/V0



TE Part #1217972-2  
250 FASTON,FLAG,REC.,18-14 AWG, NPST



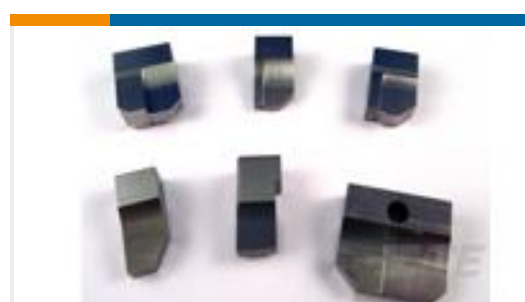
TE Part #1241965-6  
STD-TIMER GEH 6P



TE Part #1385719-1  
UP.250 STRAIGHT SA110F220F LM



TE Part #1385725-1  
.187 FLAG ULTRA POD



TE Part #1633080-3  
ANVIL, INSERT



TE Part #938365P002  
VERSAFIT-1/8-0-0.75IN-ST

## Documents



## Product Drawings

### TIMER CONNECTOR 24P HSG L/H NAT PA66

English

---

## CAD Files

### 3D PDF

3D

#### Customer View Model

[ENG\\_CVM\\_CVM\\_770198-1\\_AP.2d\\_dxf.zip](#)

English

#### Customer View Model

[ENG\\_CVM\\_CVM\\_770198-1\\_AP.3d\\_igs.zip](#)

English

#### Customer View Model

[ENG\\_CVM\\_CVM\\_770198-1\\_AP.3d\\_stp.zip](#)

English

By downloading the CAD file I accept and agree to the [Terms and Conditions](#) of use.

---

## Product Specifications

### Application Specification

English

---

## Product Environmental Compliance

### TE Material Declaration

English