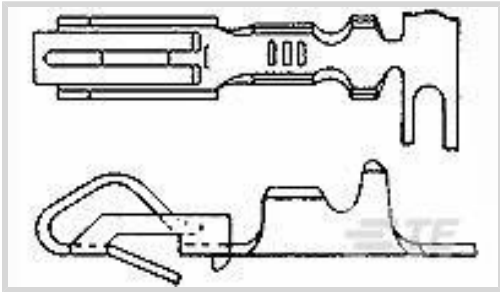




Connectors > PCB Connectors > Board-to-Board Connectors > Board-to-Board Connector Contacts



Contact Type: **Hermaphroditic**
Connector System: **Wire-to-Board**
Contact Mating Area Plating Material: **Pre-Tin**
Wire Size: **.2 – .8 mm²**

Features

Product Type Features

Connector System	Wire-to-Board
Connector & Contact Terminates To	Wire & Cable

Contact Features

PCB Contact Termination Area Plating Material	Pre-Tin
Contact Base Material	Phosphor Bronze
Contact Type	Hermaphroditic
Contact Mating Area Plating Material	Pre-Tin
Contact Orientation	Straight
Contact Current Rating (Max)	6 A

Termination Features

Termination Method to Wire & Cable	Crimp
------------------------------------	-------

Mechanical Attachment

Contact Retention Type Within Housing	Snap-In
Wire Insulation Support	With
PCB Mount Retention	Without
Connector Mounting Type	Board Mount

Dimensions

Accepts Wire Insulation Diameter Range	2.79 mm[.11 in]
Wire Size	.2 – .8 mm ²



Usage Conditions

Operating Temperature Range	-55 – 105 °C[-55 – 105 °F]
-----------------------------	----------------------------

Operation/Application

Circuit Application	Signal
---------------------	--------

Packaging Features

Packaging Quantity	6000
Packaging Method	Box

Product Compliance

For compliance documentation, visit the product page on TE.com>

EU RoHS Directive 2011/65/EU	Compliant
EU ELV Directive 2000/53/EC	Compliant
China RoHS 2 Directive MIIT Order No 32, 2016	No Restricted Materials Above Threshold
EU REACH Regulation (EC) No. 1907/2006	Current ECHA Candidate List: JAN 2021 (211) Candidate List Declared Against: JUN 2016 (169) SVHC > Threshold: Not Yet Reviewed
Halogen Content	Low Halogen - Br, Cl, F, I < 900 ppm per homogenous material. Also BFR/CFR/PVC Free
Solder Process Capability	Not applicable for solder process capability

Product Compliance Disclaimer

This information is provided based on reasonable inquiry of our suppliers and represents our current actual knowledge based on the information they provided. This information is subject to change. The part numbers that TE has identified as EU RoHS compliant have a maximum concentration of 0.1% by weight in homogenous materials for lead, hexavalent chromium, mercury, PBB, PBDE, DBP, BBP, DEHP, DIBP, and 0.01% for cadmium, or qualify for an exemption to these limits as defined in the Annexes of Directive 2011/65/EU (RoHS2). Finished electrical and electronic equipment products will be CE marked as required by Directive 2011/65/EU. Components may not be CE marked. Additionally, the part numbers that TE has identified as EU ELV compliant have a maximum concentration of 0.1% by weight in homogenous materials for lead, hexavalent chromium, and mercury, and 0.01% for cadmium, or qualify for an exemption to these limits as defined in the Annexes of Directive 2000/53/EC (ELV). Regarding the REACH Regulations, TE’s information on SVHC in articles for this part number is still based on the European Chemical Agency (ECHA) ‘Guidance on requirements for substances in articles’(Version: 2, April 2011), applying the 0.1% weight on weight concentration threshold at the finished product level. TE is aware of the European Court of Justice ruling of September 10th, 2015 also known as O5A (Once An Article Always An Article) stating that, in case of ‘complex object’, the threshold for a SVHC must be applied to both the product as a whole and simultaneously to each of the articles forming part of its composition. TE has evaluated this ruling based on the new ECHA “Guidance on requirements for substances in articles” (June 2017, version 4.0) and will be updating its statements accordingly.

Compatible Parts



TE Part # 58614-1
PROCrimp, HT&D SL156



TE Part # 2305570-1
Terminal Cutter, Side Feed

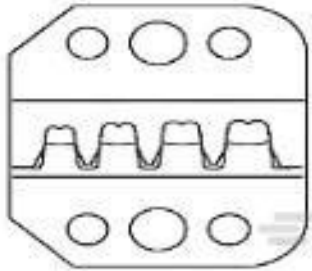


KIT
REPRESENTATION ONLY

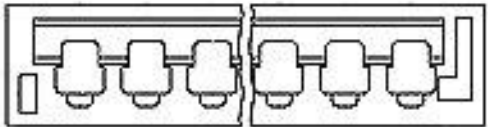
TE Part # 7-2151033-7
OCEAN_2.0_Spare_Part_Kit-070F100F



TE Part # 2151033-1
OCEAN-2.0-Applicator-S-070F100F




TE Part # 58614-2
PROCrimp, Die, SL156



TE Part # 640136-2
02P Edge Conn HSG, Bif-Leaf



TE Part # 91597-1
CCII SL-156 REC 24-18 Assy



TE Part # 2-2151033-1
OCEAN-2.0-Applicator-S-070F100F



TE Part # 2-2151033-2
OCEAN-2.0-Applicator-S-070F100FA



TE Part # 2151033-2
OCEAN-2.0-Applicator-S-070F100FA



TE Part # 5-2151033-1
OCEAN-2.0-Applicator-S-070F100F



TE Part # 5-2151033-2
OCEAN-2.0-Applicator-S-070F100FA



TE Part # 693597-2
Extraction Tool



TE Part # 7-2151033-1
OCEAN-2.0-Applicator-S-070F100F



TE Part # 7-2151033-2
OCEAN-2.0-Applicator-S-070F100FA



KIT
REPRESENTATION ONLY

TE Part # 7-2266602-7
OCEAN_2.0_Spare_Part_Kit-070F100F



TE Part # 91597-3
CCII SL-156 REC 24-18 Head

Also in the Series | UTILUX CR



Board-to-Board Connector Contacts(4)



Card Edge Connector Housings(1)



Compression Connectors(7)



Insertion & Extraction Tools(1)



Wire-to-Board Connector Contacts(2)

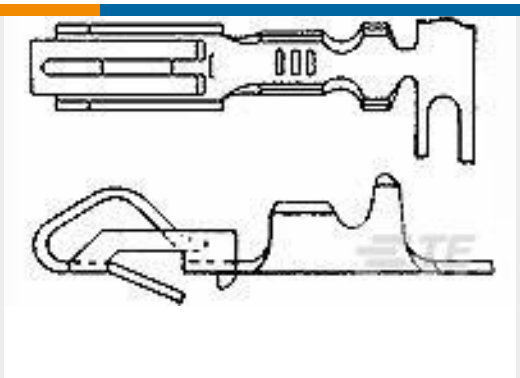
Customers Also Bought



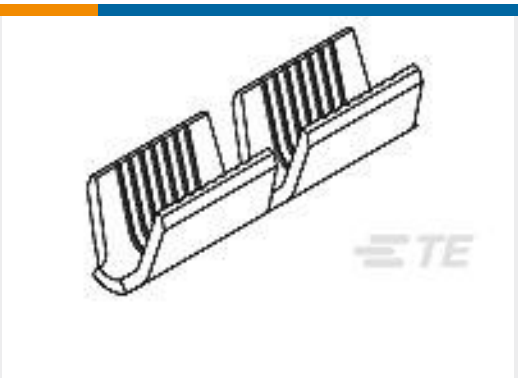
TE Part #179228-9
AMP COMMON TERMINATION HOUSINGS



TE Part #1-350867-0
01P UMNL PLUG HSG NATL



TE Part #3-61668-1
BIF-LEAF CONT CR/SNAP SN/BR



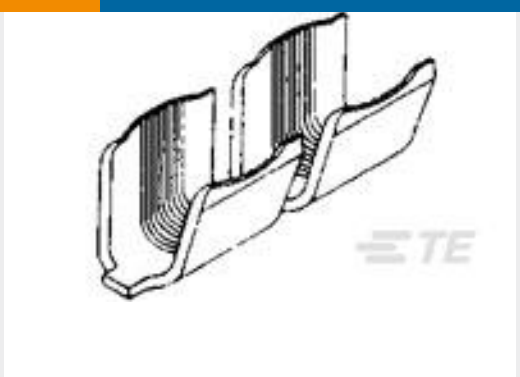
TE Part #1217384-1
AMVAR SPL 600-3000 7 SERR TPBR



TE Part #2-31887-1
PIDG RING TONGUE TERMINALS



TE Part #203618-1
MALE J.S. ASSY. - SHORT



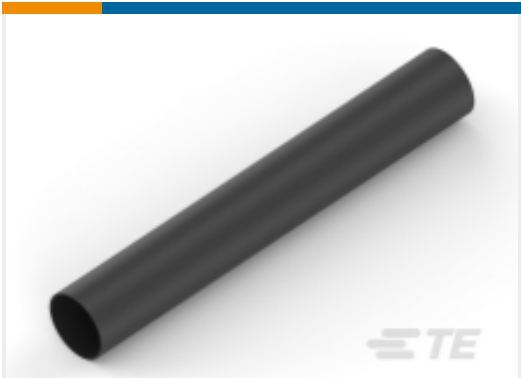
TE Part #42192-1
SPLC AMVAR 600-3000 020BR



TE Part #41333
RING 18-14 AWG TPBR



TE Part #109452-4
RING TONGUE 170 18-14 AWG PTPBR



TE Part #NB13524001
RNF-100-3/8-BK-SP

Documents



Product Drawings

BIF-LEAF CONT CR/SNAP PTPPHBZ

English

CAD Files

Customer View Model

ENG_CVM_61668-2_AS.3d_igs.zip

English

Customer View Model

ENG_CVM_61668-2_AS.3d_stp.zip

English

Customer View Model

ENG_CVM_61668-2_AS.2d_dxf.zip

English

3D PDF

English

By downloading the CAD file I accept and agree to the [Terms and Conditions](#) of use.

Product Specifications

Bifurcated Leaf Contact

English

Application Specification

English