

50865-2 ✓ ACTIVE

TE Internal #: 50865-2

Pin Sockets, Socket Length .26 in [6.6 mm], Hole Size
(Recommended) 1.83 mm [.072 in], None, Knockout Bottom, 20 –
18AWG Wire Size

[View on TE.com >](#)



Connectors > Socket Connectors > Pin Sockets > Mini Spring Socket Knockout Bottom, 6.5A



Socket Length: 6.6 mm [.26 in]

Hole Size (Recommended): 1.83 mm [.072 in]

Solder Process Feature: **None**

Socket Sleeve Style: **Knockout Bottom**

Wire Size: 20 – 18 AWG

[All Mini Spring Socket Knockout Bottom, 6.5A \(5\)](#)

Features

Product Type Features

Socket Sleeve Style	Knockout Bottom
Connector System	Cable-to-Board
Sealable	No
Connector & Contact Terminates To	Printed Circuit Board
Wire/Cable Type	Discrete Wire
Profile	Zero
Product Type	Contact

Body Features

Sleeve Material	Copper
Sleeve Plating Material	Gold Flash over Nickel

Contact Features

Contact Spring Plating Material	Gold
Contact Spring Plating Thickness	.127 μm[30 μin]

Contact Base Material	Beryllium Copper
Contact Current Rating (Max)	6.5 A
Socket Type	Discrete
Contact Transmits (Typical)	Signal (Data)/Power
Contact Mating Area Plating Thickness	30 µm[30 µin]
Contact Type	Socket

Termination Features

Insertion Method	Hand/Semi-Automatic
Termination Method to Printed Circuit Board	Through Hole - Press-Fit
Termination Method to Wire & Cable	Solder

Dimensions

Socket Length	6.6 mm[.26 in]
Hole Size (Recommended)	1.83 mm[.072 in]
Wire Size	.518 – .823 mm ²
Mating Pin Diameter Range	.86 – 1.04 mm[.034 – .041 in]
PCB Thickness (Recommended)	.79 – 3.18 mm[.031 – .125 in]

Usage Conditions

Operating Temperature Range	-65 – 125 °C[-85 – 257 °F]
-----------------------------	----------------------------

Operation/Application

Solder Process Feature	None
Circuit Application	Power & Signal

Packaging Features

Packaging Quantity	2000
Packaging Method	Bag, Loose Piece

Other

Spring Material	Beryllium Copper
-----------------	------------------

Product Compliance

[For compliance documentation, visit the product page on TE.com>](#)

EU RoHS Directive 2011/65/EU	Compliant
EU ELV Directive 2000/53/EC	Compliant
China RoHS 2 Directive MIIT Order No 32, 2016	No Restricted Materials Above Threshold

EU REACH Regulation (EC) No. 1907/2006

Current ECHA Candidate List: JAN 2021 (211)

Candidate List Declared Against: JUN 2020 (209)

SVHC > Threshold:
Not Yet Reviewed

Halogen Content

Low Halogen - Br, Cl, F, I < 900 ppm per homogenous material. Also BFR/CFR/PVC Free

Solder Process Capability

Pin-in-Paste capable to 260°C

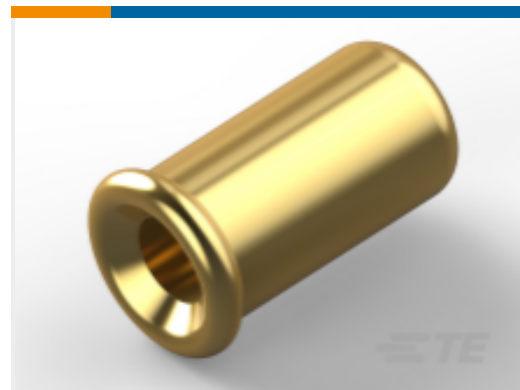
Product Compliance Disclaimer

This information is provided based on reasonable inquiry of our suppliers and represents our current actual knowledge based on the information they provided. This information is subject to change. The part numbers that TE has identified as EU RoHS compliant have a maximum concentration of 0.1% by weight in homogenous materials for lead, hexavalent chromium, mercury, PBB, PBDE, DBP, BBP, DEHP, DIBP, and 0.01% for cadmium, or qualify for an exemption to these limits as defined in the Annexes of Directive 2011/65/EU (RoHS2). Finished electrical and electronic equipment products will be CE marked as required by Directive 2011/65/EU. Components may not be CE marked. Additionally, the part numbers that TE has identified as EU ELV compliant have a maximum concentration of 0.1% by weight in homogenous materials for lead, hexavalent chromium, and mercury, and 0.01% for cadmium, or qualify for an exemption to these limits as defined in the Annexes of Directive 2000/53/EC (ELV). Regarding the REACH Regulation, the information TE provides on SVHC in articles for this part number is based on the latest European Chemicals Agency (ECHA) 'Guidance on requirements for substances in articles' posted at this URL: <https://echa.europa.eu/guidance-documents/guidance-on-reach>

Compatible Parts



TE Part # CAT-377-MSSCB65
Mini Spring Sockets: Closed Bottom, 6.5A



TE Part # CAT-377-MSSOB4
Mini Spring Sockets: Open Bottom, 6.5A

Customers Also Bought



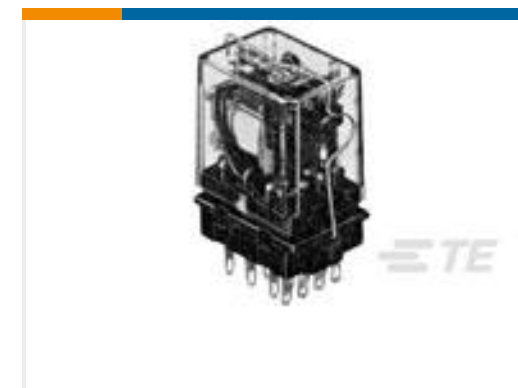
TE Part #1-5050871-0
Mini Spring Sockets: Open Bottom, 7.5A



TE Part #1-332070-1
Mini Spring Sockets: Closed Bottom, 6.5A



TE Part #1-1469492-1
MULTIGIG RT 9MM GUIDE/ESD 0 DEG



TE Part #1419111-2
20C217=SPRING,HOLD-DOWN,KH,.03



TE Part #1-5499786-1
AMP-LATCH UNIVERSAL HEADERS



TE Part #1546877-1
CPC RCP ASSY,IND ETHERNET,UNSH



TE Part #1-104068-3
34 SYSTEM 50 HDR DRST SHRD



TE Part #1622677-1
LR2 1% 110R



TE Part #1618256-9
PD10AB57=RELAY, VACUUM, SPST-N



TE Part #YAFD56-16-23SNC012
PLUG ASSY

Documents

Product Drawings

SOCKET,MIN-SPR AU SER-4

English

CAD Files

3D PDF

3D

Customer View Model

[ENG_CVM_CVM_50865-2_V.2d_dxf.zip](#)

English

Customer View Model

[ENG_CVM_CVM_50865-2_V.3d_igs.zip](#)

English

Customer View Model

[ENG_CVM_CVM_50865-2_V.3d_stp.zip](#)

English

By downloading the CAD file I accept and agree to the [Terms and Conditions](#) of use.

Product Specifications

Application Specification

English