



## FEATURES

- Universal 85 - 305VAC or 120 - 430VDC Input voltage
- Accepts AC or DC input (dual-use of same terminal)
- Operating temperature range: -30°C to +70°C
- Built-in active PFC function
- High I/O isolation test voltage up to 4000VAC
- Output short circuit, over-current, over-voltage, over-temperature protection
- Safety according to IEC/EN/UL62368, EN60335, GB4943
- Compact size with a low 1U profile
- LED indicator for power on
- Emissions meets CISPR32/EN55032 CLASS B
- Start-up delay time less than 5 seconds at -30°C
- Operating altitude up to 5000m

LMF200-23Bxx series is one of Mornsun's enclosed AC-DC switching power supply. It features universal AC input and at the same time accepts DC input voltage, cost-effective, built-in active PFC function, high efficiency and high reliability. These converters offer excellent EMC performance and meet IEC/EN61000-4, CISPR32/EN55032, IEC/EN/UL62368, EN60335, GB4943 standards and they are widely used in areas of industrial, LED, street light control, electricity, security, telecommunications, smart home etc.

## Selection Guide

Certification	Part No.*	Output Power(W)	Nominal Output Voltage and Current (Vo/Io)	Output Voltage Adjustable Range(V)	Efficiency at 230VAC (%) Typ.	Max. Capacitive Load (μF)
UL/CE/CCC	LMF200-23B12	200.4	12V/16.7A	11.4 - 12.6	88.0	4000
	LMF200-23B15	201.0	15V/13.4A	14.25 - 15.75	88.0	3300
	LMF200-23B24	201.6	24V/8.4A	22.8 - 25.2	90.0	1500
	LMF200-23B48	201.6	48V/4.2A	45.6 - 50.4	89.0	470

Note: \*Use suffix "C" for terminal with protective cover and suffix "Q" for conformal coating.

## Input Specifications

Item	Operating Conditions		Min.	Typ.	Max.	Unit	
Input Voltage Range	AC input		85	--	305	VAC	
	DC input		120	--	430	VDC	
Input Voltage Frequency			47	--	63	Hz	
Input Current	115VAC		--	2.5	3.0	A	
	230VAC		--	1.3	2.0		
Input Inrush Current	115VAC		Cold Start		--		
	230VAC		--	65	--		
Power Factor	115VAC		At full Load		--	--	
	230VAC		--	0.95	--		
Hot Plug			Unavailable				

## Output Specifications

Item	Operating Conditions		Min.	Typ.	Max.	Unit
Output Voltage Accuracy	Full Load Range	12V/15V/24V/48V	--	±1	--	%

# AC/DC 200W Enclosed Switching Power Supply

## LMF200-23Bxx, LMF200-23Bxx-C, LMF200-23Bxx-Q Series

# MORNSUN

Line Regulation	Rated Load	12V/15V/24V/48V	--	±0.5	--	
Load Regulation	230VAC, 0% - 100% load	12V/15V/24V/48V	--	±0.5	--	
Output Ripple & Noise*	20MHz bandwidth (peak-to-peak value)	12V/15V/24V	--	150	--	mV
		48V	--	240	--	
Stand-by Power Consumption	Normal temperature, 230VAC		--	0.75	1.0	W
Temperature Coefficient	0-45°C		--	±0.03	--	%/°C
Minimum Load			0	--	--	%
Hold-up Time	Normal temperature, Full Load	115VAC	--	8	--	ms
		230VAC	--	8	--	
Short Circuit Protection	recover time <5s after the short circuit disappear.		Hiccup , continuous, self-recover			
Over-current Protection*			105%-200% Io, self-recover			
Over-voltage Protection	12V		≤ 16.2V (Output voltage turn off, re-power on for recover)			
	15V		≤ 21.8V (Output voltage turn off, re-power on for recover)			
	24V		≤ 32.4V (Output voltage turn off, re-power on for recover)			
	48V		≤ 60.0V (Output voltage turn off, re-power on for recover)			
Over-temperature Protection*	Over-temperature Protection Activation		--	--	85	°C
	Over-temperature Protection Deactivation		55	--	--	

Note: 1.\*The "Tip and barrel method" is used for ripple and noise test, output parallel 47uF electrolytic capacitor and 0.1uF ceramic capacitor, please refer to Enclosed Switching Power Supply Application Notes for specific information.  
 2.\*Over-current Protection: Test at rated output voltage, Io is rated output current load.  
 3.\*Over-temperature Protection needs to be tested under rated full load conditions.

## General Specifications

Item	Operating Conditions		Min.	Typ.	Max.	Unit
Isolation Test	Input - ⊕	Electric Strength Test for 1min., leakage current <10mA	2000	--	--	VAC
	Input-output		4000	--	--	
	output - ⊕		500	--	--	
Insulation Resistance	Input - ⊕	500VDC, 25±5°C, Humidity < 95%RH, non-condensing	100	--	--	MΩ
	Input - output		100	--	--	
	output - ⊕		100	--	--	
Operating Temperature			-30	--	+70	°C
Storage Temperature			-40	--	+85	
Operating Humidity	Non-condensing		20	--	90	%RH
Storage Humidity			10	--	95	
Power Derating	Operating temperature derating	-30°C to +45°C	0	--	--	% / °C
		+45°C to +70°C	2.0	--	--	
	Input voltage derating	85VAC - 100VAC@50Hz	2.0	--	--	% / VAC
		85VAC - 100VAC@60Hz	1.67	--	--	
		100VAC - 305VAC	0	--	--	% / VDC
		120VDC - 140VDC	1.25	--	--	
140VDC - 430VDC	0	--	--			
Safety Standard			Meet IEC/EN/UL62368/EN60335/GB4943			
Safety Certification			IEC/EN/UL62368/GB4943			
Safety Class			CLASS I			
MTBF	MIL-HDBK-217F@25°C		>250,000 h			

MORNSUN®

MORNSUN Guangzhou Science & Technology Co., Ltd.

2020.11.24-A/1

Page 2 of 5

MORNSUN Guangzhou Science & Technology Co., Ltd. reserves the copyright and right of final interpretation

Mechanical Specifications

Case Material	Metal (AL1100)
Dimensions	179.00 x 99.00 x 30.00 mm
Weight	475.0g (Typ.)
Cooling Method	Free air convection

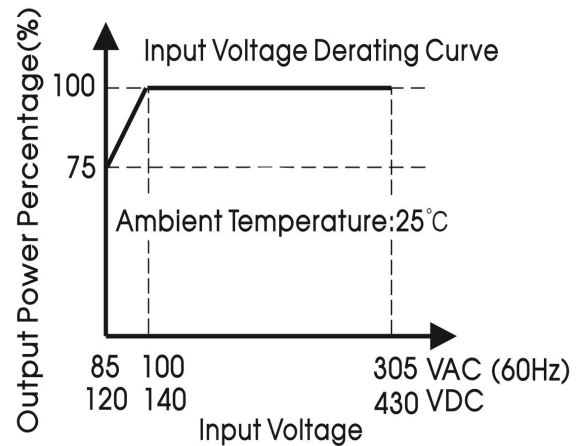
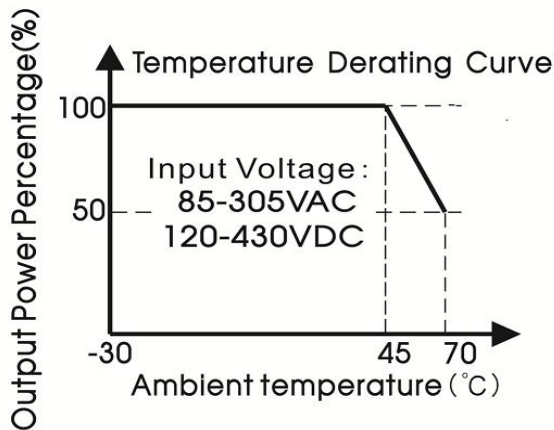
Electromagnetic Compatibility (EMC)\*

Emissions(EMI)*	CE	CISPR32/EN55032	CLASS B	
	RE	CISPR32/EN55032	CLASS B	
	Harmonic current	IEC/EN61000-3-2	CLASS A	
	Voltage Flicker	IEC/EN61000-3-3		
Immunity(EMS)*	ESD	IEC/EN 61000-4-2	Contact ±6KV /Air ±8KV	Perf. Criteria A
	RS	IEC/EN 61000-4-3	10V/m	perf. Criteria A
	EFT	IEC/EN 61000-4-4	±4KV	perf. Criteria A
	Surge	IEC/EN 61000-4-5	±2KV/±4KV	perf. Criteria A
	CS	IEC/EN61000-4-6	10 Vr.m.s	perf. Criteria A
	DIP	IEC/EN61000-4-11	0%, 70%	perf. Criteria B

Note: 1.\*One magnetic bead(nickel-zinc ferrite)should be coupled with the output load line during CE/RE testing.

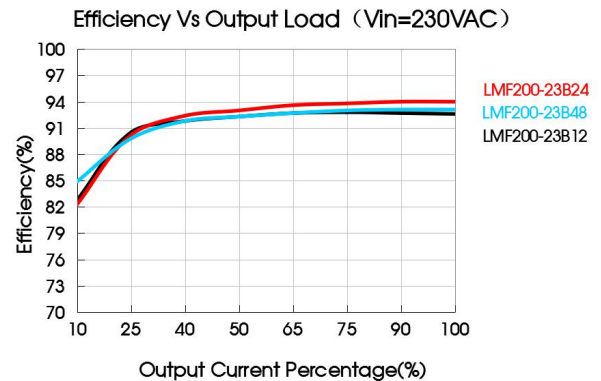
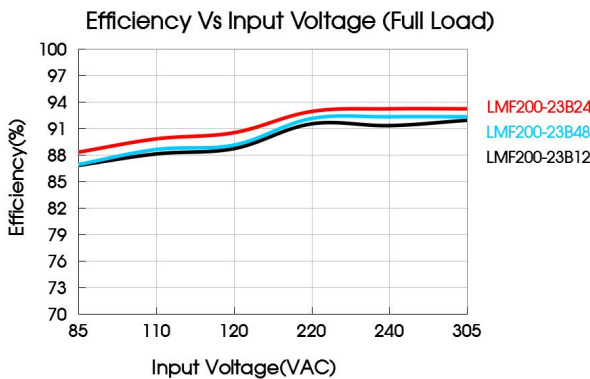
2.\*The power supply is considered a component as part of system, all EMC items are tested on a metal plate (LxWxH, 450mmx450mmx3mm). Power supply should be combined with final equipment for EMC confirmation.

Product Characteristic Curve



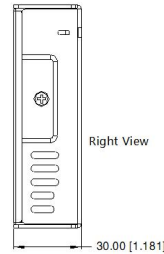
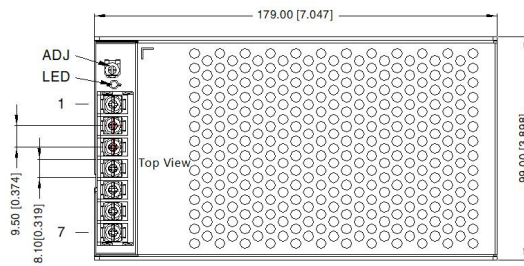
Note: ①With an input voltage between 85-100VAC and a DC input between 120-140VDC, the output power must be derated as per the temperature derating curves;

②This product is suitable for applications using natural air cooling; for applications in closed environment please consult Mornsun FAE.



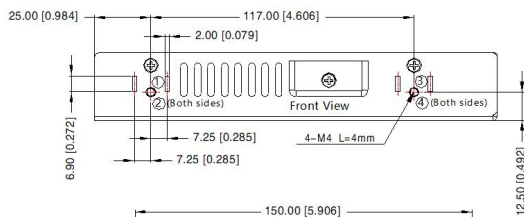
Dimensions and Recommended Layout

LMF200-23Bxx, LMF200-23Bxx-Q Series



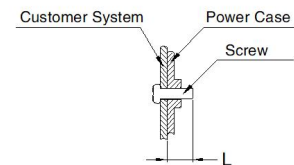
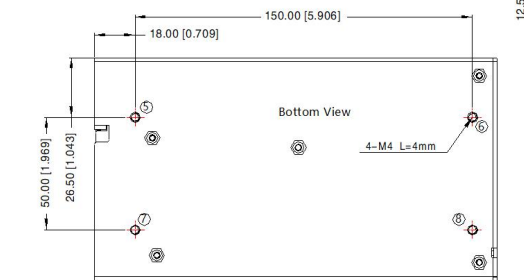
THIRD ANGLE PROJECTION

Pin-Out	
Pin	Function
1	+Vo
2	+Vo
3	-Vo
4	-Vo
5	⊕
6	AC(N)/DC(-)
7	AC(L)/DC(+)



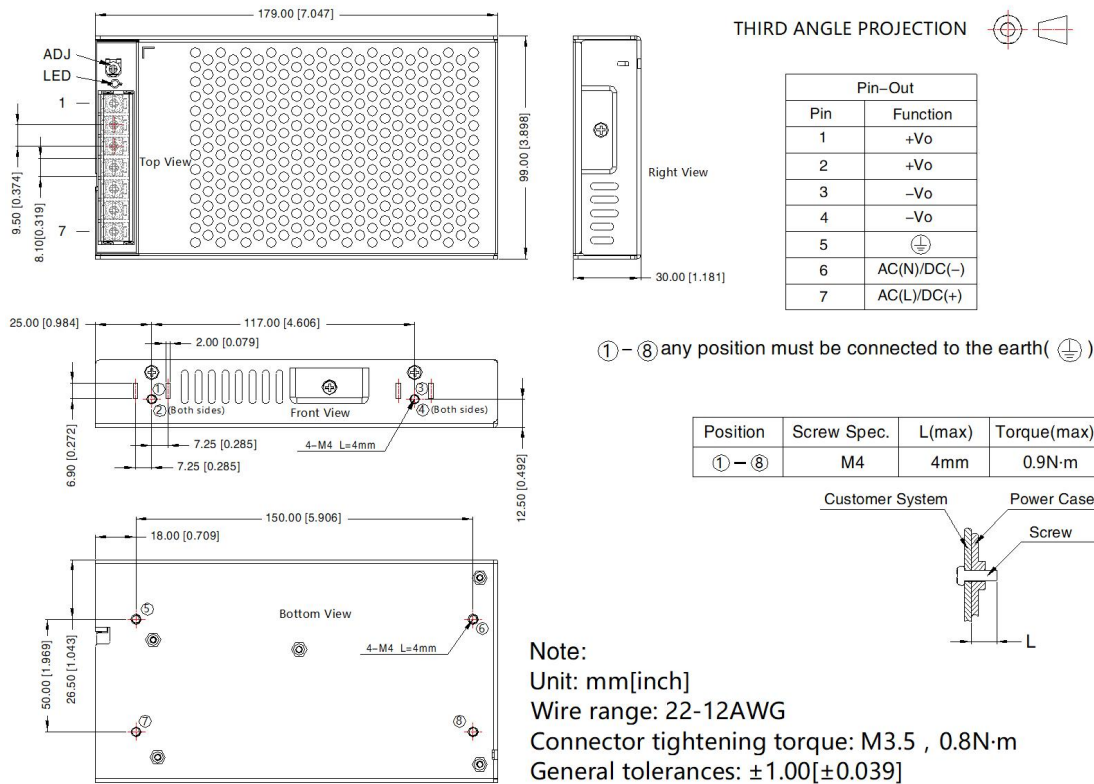
①-⑧ any position must be connected to the earth(⊕)

Position	Screw Spec.	L(max)	Torque(max)
①-⑧	M4	4mm	0.9N·m



Note:  
 Unit: mm[inch]  
 Wire range: 22-12AWG  
 Connector tightening torque: M3.5 , 0.8N·m  
 General tolerances: ±1.00[±0.039]

LMF200-23Bxx-C Series



Note:

- For additional information on Product Packaging please refer to [www.mornsun-power.com](http://www.mornsun-power.com). Packaging bag number: 58220136;
- Unless otherwise specified, parameters in this datasheet were measured under the conditions of Ta=25°C, humidity<75%RH with nominal input voltage and rated output load;
- The ambient temperature derating of 5°C/1000m is needed for operating altitude greater than 2000m;
- All index testing methods in this datasheet are based on our company corporate standards;
- In order to improve the efficiency at high input voltage, there will be audible noise generated, but it does not affect product performance and reliability;
- We can provide product customization service, please contact our technicians directly for specific information;
- Products are related to laws and regulations: see "Features" and "EMC";
- The out case needs to be connected to PE (⊕) of system when the terminal equipment in operating;
- Our products shall be classified according to ISO14001 and related environmental laws and regulations, and shall be handled by qualified units;
- The power supply is considered a component which will be installed into a final equipment. All EMC tests should be confirmed with the final equipment. Please consult our FAE for EMC test operation instructions.

Mornsun Guangzhou Science & Technology Co., Ltd.

Address: No. 5, Kehui St. 1, Kehui Development Center, Science Ave., Guangzhou Science City, Huangpu District, Guangzhou, P. R. China

Tel: 86-20-38601850

Fax: 86-20-38601272

E-mail: info@mornsun.cn

www.mornsun-power.com