

1588129-3 ✓ ACTIVE

CGS SM, Macro Sensors PR

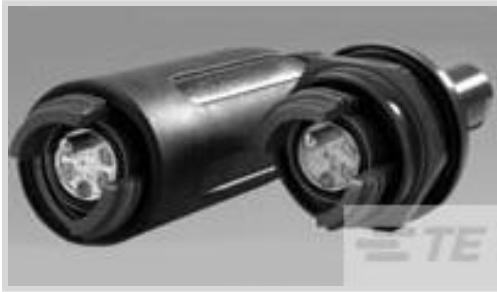
TE Internal #: 1588129-3

Macro Sensors PR, Expanded Beam Fiber Optics, Insert Assembly, Singlemode

[View on TE.com >](#)



Fiber Optics > Fiber Optic Connectors > Rugged Fiber Connectors > Expanded Beam Fiber Optics



Expanded Beam Fiber Optic Product Type: **Insert Assembly**

Expanded Beam Fiber Optic Mode: **Singlemode**

Features

Product Type Features

Expanded Beam Fiber Optic Product Type	Insert Assembly
Expanded Beam Fiber Optic Mode	Singlemode

Configuration Features

Number of Channels	4
--------------------	---

Signal Characteristics

Operating Wavelength	1310 – 1550 nm
----------------------	----------------

Product Compliance

[For compliance documentation, visit the product page on TE.com>](#)

EU RoHS Directive 2011/65/EU	Compliant with Exemptions
EU ELV Directive 2000/53/EC	Compliant with Exemptions
China RoHS 2 Directive MIIT Order No 32, 2016	Restricted Materials Above Threshold
EU REACH Regulation (EC) No. 1907/2006	Current ECHA Candidate List: JAN 2021 (211) Candidate List Declared Against: JAN 2020 (205) SVHC > Threshold: Pb (1% in Insert Body) Article Safe Usage Statements: Do not eat, drink or smoke when using this product. Wash thoroughly after handling. Recycle if possible and dispose of the article by following all applicable governmental regulations relevant to your geographic location.
Halogen Content	Low Halogen - Br, Cl, F, I < 900 ppm per homogenous material. Also BFR/CFR/PVC Free
Solder Process Capability	Not applicable for solder process capability

Product Compliance Disclaimer

This information is provided based on reasonable inquiry of our suppliers and represents our current actual knowledge based on the information they provided. This information is subject to change. The part numbers that TE has identified as EU RoHS compliant have a maximum concentration of 0.1% by weight in homogenous materials for lead, hexavalent chromium, mercury, PBB, PBDE, DBP, BBP, DEHP, DIBP, and 0.01% for cadmium, or qualify for an exemption to these limits as defined in the Annexes of Directive 2011/65/EU (RoHS2). Finished electrical and electronic equipment products will be CE marked as required by Directive 2011/65/EU. Components may not be CE marked. Additionally, the part numbers that TE has identified as EU ELV compliant have a maximum concentration of 0.1% by weight in homogenous materials for lead, hexavalent chromium, and mercury, and 0.01% for cadmium, or qualify for an exemption to these limits as defined in the Annexes of Directive 2000/53/EC (ELV). Regarding the REACH Regulation, the information TE provides on SVHC in articles for this part number is based on the latest European Chemicals Agency (ECHA) 'Guidance on requirements for substances in articles' posted at this URL: <https://echa.europa.eu/guidance-documents/guidance-on-reach>

Compatible Parts



TE Part # 1828826-1
SHELL KIT, BLKH'D, SPL, PRO BEAM
MINI



TE Part # 1754700-1
FERRULE KIT, SM,125,MINI EB



TE Part # 1754700-3
FERRULE KIT, PC,125.5,MINI EB



TE Part # 1828698-1
SHELL KIT,PRO BEAM MINI,PLUG,
EPDM,AL



TE Part # 1828699-1
SHELL KIT, LP DH, PRO BEAM MINI,
HA



TE Part # 1918185-1
SHELL KIT SEAL BH PRO BEAM MINI
HA



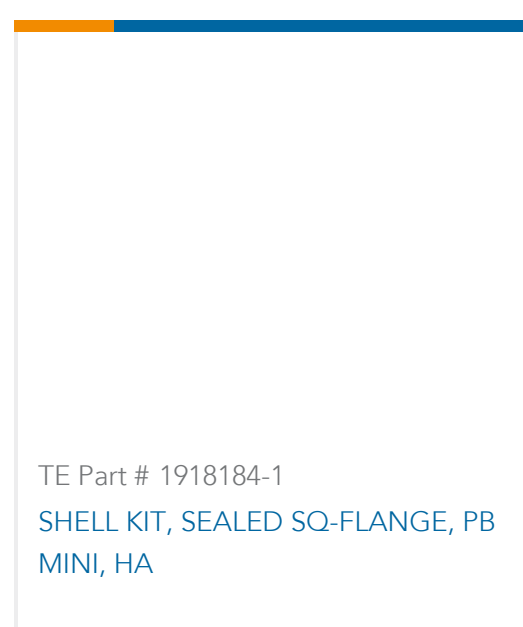
TE Part # 1985140-1
SHELL KIT, 1.8mm, HA, PRO BEAM
MINI



TE Part # 1985140-4
SHELL KIT,DH LP 1.8mm,PRO BEAM
MINI,BLK



TE Part # 1828828-1
SHELL KIT, SQ-FLANGE, 1.8mm, HA,
PBMINI



TE Part # 1918184-1
SHELL KIT, SEALED SQ-FLANGE, PB
MINI, HA

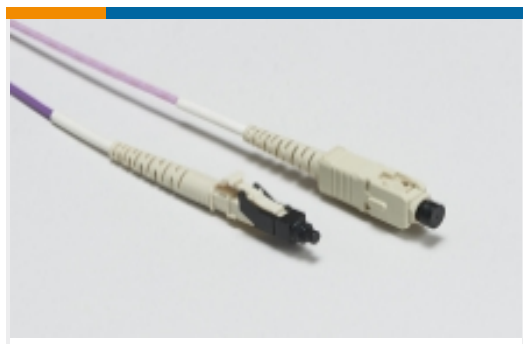
Also in the Series | **CGS SM**



Battery Holders(1)



Expanded Beam Fiber Optics(9)



LC Connectors(2)



RJ14 Connectors(1)



RJ22 Connectors(1)



RJ25 Connectors(1)



RJ45 Connectors(3)

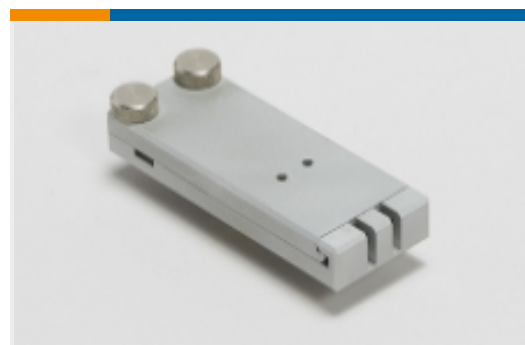


SD Card Connectors(1)



Surface Mount Resistors(545)

Also in the Series | Macro Sensors PR



Curing Blocks, Ovens & Sleeves(1)



Expanded Beam Fiber Housings(5)



Expanded Beam Fiber Optics(24)



Leadframes(6)

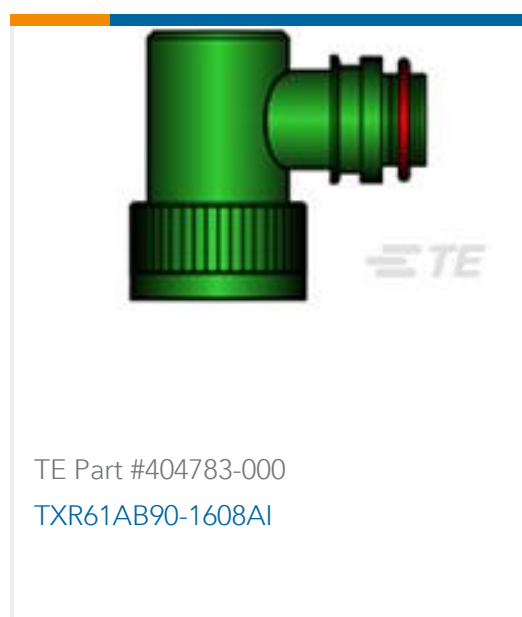
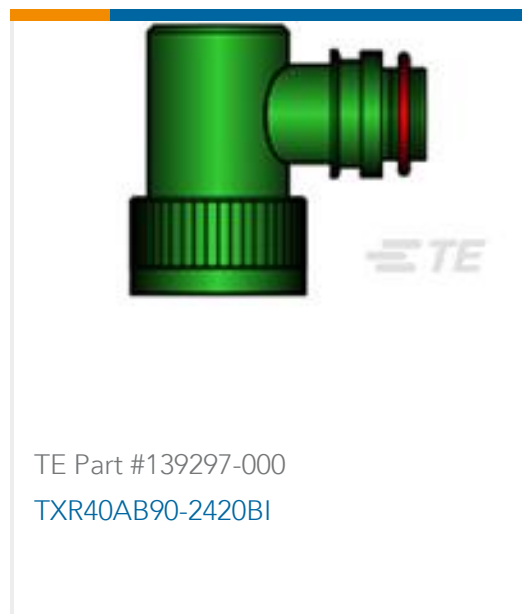


Linear Position Sensors - LVDT/LVIT(18)



Pre-Printed Markers(1)

Customers Also Bought



Documents

Product Drawings

[INSERT ASSY, MINI EB 4X1310/1550 SM](#)

English

CAD Files

[3D PDF](#)

3D

Customer View Model

[ENG_CVM_CVM_1588129-3_F.2d_dxf.zip](#)

English

Customer View Model

[ENG_CVM_CVM_1588129-3_F.3d_igs.zip](#)

English

Customer View Model

[ENG_CVM_CVM_1588129-3_F.3d_stp.zip](#)

English

By downloading the CAD file I accept and agree to the [Terms and Conditions](#) of use.



Instruction Sheets

[Instruction Sheet \(U.S.\)](#)

English

[Instruction Sheet \(U.S.\)](#)

English

[Instruction Sheet \(U.S.\)](#)

English

[Instruction Sheet \(U.S.\)](#)

English

[Instruction Sheet \(U.S.\)](#)

English

[Instruction Sheet \(U.S.\)](#)

English

[Instruction Sheet \(U.S.\)](#)

English

[Instruction Sheet \(U.S.\)](#)

English

[Instruction Sheet \(U.S.\)](#)

English

[Instruction Sheet \(U.S.\)](#)

English

[Instruction Sheet \(U.S.\)](#)

English

[Instruction Sheet \(U.S.\)](#)

English

[Instruction Sheet \(U.S.\)](#)

English