



Kilovac | Kilovac EV200

TE Internal #: 1618002-3

Kilovac EV200, High Voltage Relays, 12 – 900kVDC Contact Voltage Rating, High Voltage Relay Contact Arrangement 1 Form X, SPST-NO, Flying Leads

[View on TE.com >](#)

Relays, Contactors & Switches > Relays > High Voltage Relays



Contact Voltage Rating: **12 – 900 kVDC**

High Voltage Relay Contact Arrangement: **1 Form X, SPST-NO**

High Voltage Connection (Coil): **Flying Leads**

High Voltage Connection (Power): **Stud Terminals**

Economizer: **External**

Features

Product Type Features

RF Rated	No
Product Type	Relay
Relay Type	High Voltage

Configuration Features

Economizer	External
Power Switching	Yes

Electrical Characteristics

Contact Voltage Rating	12 – 900 kVDC
High Voltage Relay Voltage (Max)	900 VDC
High Voltage Relay Coil Voltage Rating	32 – 95 VDC
High Voltage Relay Coil Resistance	40 Ω
High Voltage Relay Contact Switching Voltage (Max)	900

Contact Features

High Voltage Relay Contact Arrangement	1 Form X, SPST-NO
Auxiliary Contacts	Without
High Voltage Relay Contact Current Rating	500 A
Contact Base Material	Copper

Termination Features



High Voltage Connection (Coil)	Flying Leads
High Voltage Connection (Power)	Stud Terminals
Termination Style	Stud Terminals

Mechanical Attachment

High Voltage Relay Mounting Type	Bottom
----------------------------------	--------

Product Compliance

For compliance documentation, visit the product page on [TE.com](https://www.te.com)>

EU RoHS Directive 2011/65/EU	Compliant
EU ELV Directive 2000/53/EC	Compliant with Exemptions
China RoHS 2 Directive MIIT Order No 32, 2016	No Restricted Materials Above Threshold
EU REACH Regulation (EC) No. 1907/2006	Current ECHA Candidate List: JAN 2021 (211) Candidate List Declared Against: JAN 2021 (211) Does not contain REACH SVHC
Halogen Content	Low Halogen - Br, Cl, F, I < 900 ppm per homogenous material. Also BFR/CFR/PVC Free
Solder Process Capability	Hand solderable with lead free solder

Product Compliance Disclaimer

This information is provided based on reasonable inquiry of our suppliers and represents our current actual knowledge based on the information they provided. This information is subject to change. The part numbers that TE has identified as EU RoHS compliant have a maximum concentration of 0.1% by weight in homogenous materials for lead, hexavalent chromium, mercury, PBB, PBDE, DBP, BBP, DEHP, DIBP, and 0.01% for cadmium, or qualify for an exemption to these limits as defined in the Annexes of Directive 2011/65/EU (RoHS2). Finished electrical and electronic equipment products will be CE marked as required by Directive 2011/65/EU. Components may not be CE marked. Additionally, the part numbers that TE has identified as EU ELV compliant have a maximum concentration of 0.1% by weight in homogenous materials for lead, hexavalent chromium, and mercury, and 0.01% for cadmium, or qualify for an exemption to these limits as defined in the Annexes of Directive 2000/53/EC (ELV). Regarding the REACH Regulation, the information TE provides on SVHC in articles for this part number is based on the latest European Chemicals Agency (ECHA) 'Guidance on requirements for substances in articles' posted at this URL: <https://echa.europa.eu/guidance-documents/guidance-on-reach>

Compatible Parts



TE Part # 4-1618391-2
LEV100A6ANH=RELAY,SPST-NO,
48VDC VMT 15

Also in the Series | Kilovac EV200



DC Contactors(1)



Definite Purpose Contactors(1)



High Voltage Relays(17)

Customers Also Bought



TE Part #1-406541-5
MJ,INV,1X1,0PNL G.,100"ST,SN



TE Part #1618387-3
LEV200A4ANA=RELAY, SPST-NO



TE Part #146507-2
04 MODII HDR DRST UNSHRD STKG



TE Part #1-2176411-6
1/2W SM M/OX 5% 47K



TE Part #1-1879355-0
RR03 5% 10K AMMO



TE Part #1-6609951-7
CORCOM P SERIES MULTI-FUNCTION INLET FIL



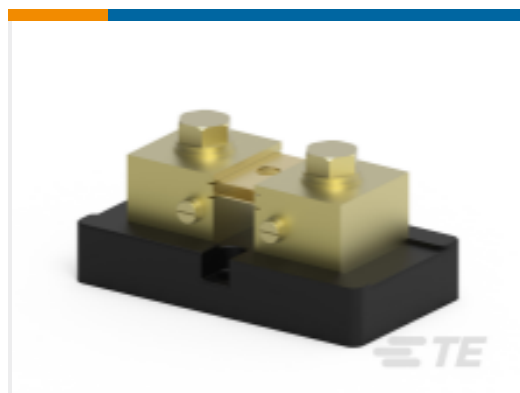
TE Part #1-776276-1
AMPSEAL HEADERS



TE Part #1-1618002-1
EV200ADANA=RELAY, EV200 SPST-NO



TE Part #1618002-4
EV200A3ANA=RELAY, EV200, SPST-NO



TE Part #CG3318-000
CI-TM50050



Documents

CAD Files

3D PDF

3D

Customer View Model

[ENG_CVM_CVM_1618002-3_F.2d_dxf.zip](#)

English

Customer View Model

[ENG_CVM_CVM_1618002-3_F.3d_igs.zip](#)

English

Customer View Model

[ENG_CVM_CVM_1618002-3_F.3d_stp.zip](#)

English

By downloading the CAD file I accept and agree to the [Terms and Conditions](#) of use.

Datasheets & Catalog Pages

[5-1773450-5_sec7_EV200A](#)

English