

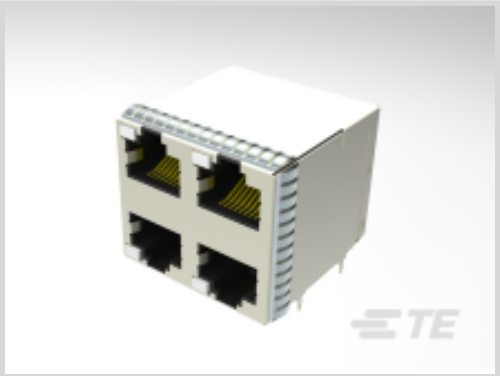


TE Internal #: 2303402-1

RJ45 Connectors, RJ45, Multiple Ports, Port Matrix Configuration 2 x 2, RJ Type Jacks & Plugs, Standard Connector Contact Density, Jack, Stacked

[View on TE.com >](#)

Connectors > Modular Jacks & Plugs > RJ45 Connectors



Modular Jack & Plug Interface Type: **RJ45**

Port Configuration: **Multiple Ports**

Port Matrix Configuration: **2 x 2**

Modular Jacks & Plugs Products: **RJ Type Jacks & Plugs**

Connector Contact Density: **Standard**

Features

Product Type Features

Connectors & Connector Components Type	Connector
Connector Product Type	Connector Assembly
Modular Jack & Plug Interface Type	RJ45
Modular Jacks & Plugs Products	RJ Type Jacks & Plugs
Modular Connector Style	Jack
Grounding Options	PCB and Panel Ground
Connector & Contact Terminates To	Printed Circuit Board

Configuration Features

Panel Ground Location	Sides
Number of PCB Ground Tabs	4
Wiring Pattern	T568A/T568B
Port Configuration	Multiple Ports
Port Matrix Configuration	2 x 2
Connector Contact Density	Standard
Multiple Port Configuration	Stacked
Status Indicator Type	LED
Number of Positions	8
Number of Loaded Positions	8



PCB Mount Orientation	Right Angle
-----------------------	-------------

Body Features

Shield Plating Finish	Bright
Grounding Tab Plating Material	Tin over Nickel
PCB Ground Tab Location	10.41 mm[.41 in]
Shield Plating Material	Copper Preplated with Nickel
Shield Material	Copper Alloy
Modular Jack Latch Orientation	Inverted (Top) / Standard (Bottom)
Connector Profile	Standard
LED Color (Bottom Left)	Green/Red
LED Color (Bottom Right)	Green/Red

Contact Features

Contact Current Rating (Max)	1.5 A
Contact Mating Area Plating Material	Gold over Nickel
Contact Base Material	Phosphor Bronze
Contact Mating Area Plating Material Thickness	.76 µm[30 µin]

Termination Features

Termination Method to Printed Circuit Board	Through Hole - Press-Fit
Termination Post & Tail Length	2.24 mm[.088 in]

Mechanical Attachment

Connector Mounting Type	Board Mount, Panel Mount
-------------------------	--------------------------

Housing Features

Mating Entry Location	Side
Centerline (Pitch)	1.02 mm[.04 in]
Housing Color	Black
Housing Material	LCP With 30% G.F

Dimensions

PCB Thickness (Recommended)	1.6 mm[.063 in]
Connector Height	29.06 mm[1.441 in]

Usage Conditions

Housing Material Temperature	Standard
Operating Temperature Range	-40 – 85 °C[-40 – 185 °F][-40 – 185 °F]



Operation/Application

Shielded	Yes
Circuit Application	Signal

Industry Standards

UL Flammability Rating	UL 94V-0
Performance Category	Cat 5e

Packaging Features

Packaging Method	Box & Tray
------------------	------------

Other

Shield Panel Ground Type	Shield has bottom panel grounds.
--------------------------	----------------------------------

Product Compliance

For compliance documentation, visit the product page on TE.com>

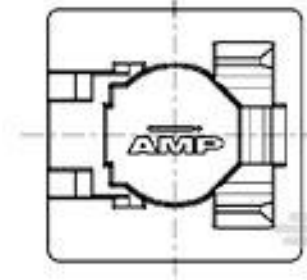
EU RoHS Directive 2011/65/EU	Compliant
EU ELV Directive 2000/53/EC	Compliant
China RoHS 2 Directive MIIT Order No 32, 2016	No Restricted Materials Above Threshold
EU REACH Regulation (EC) No. 1907/2006	Current ECHA Candidate List: JAN 2021 (211) Candidate List Declared Against: JUN 2016 (169) SVHC > Threshold: Not Yet Reviewed
Halogen Content	Low Halogen - Br, Cl, F, I < 900 ppm per homogenous material. Also BFR/CFR/PVC Free
Solder Process Capability	Not applicable for solder process capability

Product Compliance Disclaimer

This information is provided based on reasonable inquiry of our suppliers and represents our current actual knowledge based on the information they provided. This information is subject to change. The part numbers that TE has identified as EU RoHS compliant have a maximum concentration of 0.1% by weight in homogenous materials for lead, hexavalent chromium, mercury, PBB, PBDE, DBP, BBP, DEHP, DIBP, and 0.01% for cadmium, or qualify for an exemption to these limits as defined in the Annexes of Directive 2011/65/EU (RoHS2). Finished electrical and electronic equipment products will be CE marked as required by Directive 2011/65/EU. Components may not be CE marked. Additionally, the part numbers that TE has identified as EU ELV compliant have a maximum concentration of 0.1% by weight in homogenous materials for lead, hexavalent chromium, and mercury, and 0.01% for cadmium, or qualify for an exemption to these limits as defined in the Annexes of Directive 2000/53/EC (ELV). Regarding the REACH Regulation, the information TE provides on SVHC in articles for this part number is based on the latest European Chemicals Agency (ECHA) 'Guidance on requirements for substances in articles' posted at this URL: <https://echa.europa.eu/guidance-documents/guidance-on-reach>



Compatible Parts



TE Part # 188729-1
8P.COVER/SOLD.STOP

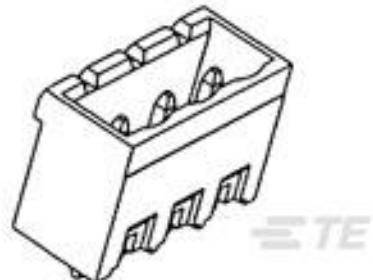
Customers Also Bought



TE Part #85-300G-0R
MEDIA ISOLATED PRESSURE STOCK LIST



TE Part #3-6609940-5
CORCOM P SERIES MULTI-FUNCTION INLET FIL



TE Part #282826-6
TERMI-BLOK HEADER,ASSY90 6P.



TE Part #2-1658462-3
MSB0.80RC-ASY120FL,-,30,-TY



TE Part #2170112-3
Cage Assy SAN Hsink QSFP Behind Bezel



TE Part #355225-000
TXR41AB45-2216BI



TE Part #1-1969589-3
HSG, REC,FREE-HANG,GWT, SINGLE ROW,EP2.5



TE Part #1-1969589-2
HSG, REC,FREE-HANG,GWT, SINGLE ROW,EP2.5



TE Part #104483-7
54 SHORT PT RCPT HSG DR .100CL



TE Part #1625858-2
RH73 1J 1G0 10% 250PPM

Documents

Product Drawings
STK MJ ASSY,8POS,2X2,CAT5E

English

CAD Files
3D PDF
3D



Customer View Model

[ENG_CVM_CVM_2303402-1_A.2d_dxf.zip](#)

English

Customer View Model

[ENG_CVM_CVM_2303402-1_A.3d_igs.zip](#)

English

Customer View Model

[ENG_CVM_CVM_2303402-1_A.3d_stp.zip](#)

English

By downloading the CAD file I accept and agree to the [Terms and Conditions](#) of use.

Product Specifications

[Application Specification](#)

English