

W67-X2Q50-30 ✓ ACTIVE

Potter & Brumfield | Potter & Brumfield W6

TE Internal #: 7-1393252-8

Potter & Brumfield W6, Circuit Breakers, Magnetic, Series Trip,
White Toggle Color, 65VDC Voltage Rating DC, 30A Circuit Breaker
Current Rating

[View on TE.com >](#)



Relays, Contactors & Switches > Circuit Breakers



Circuit Breaker Type: **Magnetic**

Circuit Function: **Series Trip**

Illuminated: **No**

Toggle Color: **White**

Voltage Rating DC: **65 VDC**

Features

Product Type Features

Illumination Type	No Light
Product Type	Circuit Breaker
Actuator Type	Toggle
Circuit Breaker Type	Magnetic
Illuminated	No
Toggle Color	White

Configuration Features

	.75 x 1.66 in
Earthing Switch	Without
Circuit Function	Series Trip

Electrical Characteristics

Voltage Rating DC	65 VDC
Circuit Breaker Current Rating	30 A
Interrupt Capacity	5000A @ 277VAC

Contact Features

Pole Configuration	1
Trip Time at 200%	.03 (Max) seconds

Termination Features



Circuit Breaker Termination Type	6.35 [.25] Straight Quick Connect Tab
----------------------------------	---------------------------------------

Mechanical Attachment

Series/Mounting Option	W6 (6-32 Mounting Threads)
Mounting Options	6-32 Mounting Threads
Circuit Breaker Mounting Type	Panel Mount

Dimensions

	.047 – .11 in
Circuit Breaker Size	50.8 mm[2 in]

Identification Marking

Stamped Marking Type	International I/O
----------------------	-------------------

Product Compliance

For compliance documentation, visit the product page on TE.com>

EU RoHS Directive 2011/65/EU	Compliant
EU ELV Directive 2000/53/EC	Not Compliant
China RoHS 2 Directive MIIT Order No 32, 2016	No Restricted Materials Above Threshold
EU REACH Regulation (EC) No. 1907/2006	Current ECHA Candidate List: JAN 2021 (211) Candidate List Declared Against: JAN 2021 (211) SVHC > Threshold: Cadmium oxide (5.1% in Component) Article Safe Usage Statements: Use personal protective equipment as required. Do not eat, drink or smoke when using this product. Recycle if possible and dispose of the article by following all applicable governmental regulations relevant to your geographic location.
Halogen Content	Low Halogen - Br, Cl, F, I < 900 ppm per homogenous material. Also BFR/CFR/PVC Free
Solder Process Capability	Not applicable for solder process capability

Product Compliance Disclaimer

This information is provided based on reasonable inquiry of our suppliers and represents our current actual knowledge based on the information they provided. This information is subject to change. The part numbers that TE has identified as EU RoHS compliant have a maximum concentration of 0.1% by weight in homogenous materials for lead, hexavalent chromium, mercury, PBB, PBDE, DBP, BBP, DEHP, DIBP, and 0.01% for cadmium, or qualify for an exemption to these limits as defined in the Annexes of Directive 2011/65/EU (RoHS2). Finished electrical and electronic equipment products will be CE marked as required by Directive 2011/65/EU. Components may not be CE marked. Additionally, the part numbers that TE has identified as EU ELV compliant have a maximum concentration of 0.1% by weight in homogenous materials for lead, hexavalent chromium, and mercury, and 0.01% for cadmium, or qualify for an exemption to these limits as defined in the Annexes of Directive 2000/53/EC (ELV). Regarding the REACH Regulation, the information TE provides on SVHC in articles for this part number is based on the latest European Chemicals Agency (ECHA) 'Guidance on requirements for substances in articles' posted at this URL: <https://echa.europa.eu/guidance-documents/guidance-on-reach>

Compatible Parts



TE Part # 175022-1
250 PL EX REC. 18-14AWG PTBR



TE Part # 6-1393252-1
W67-X2Q12-30=M6/M7/M9/W6/W7



TE Part # 7-1393252-2
W67-X2Q13-30=M6/M7/M9/W6/W7



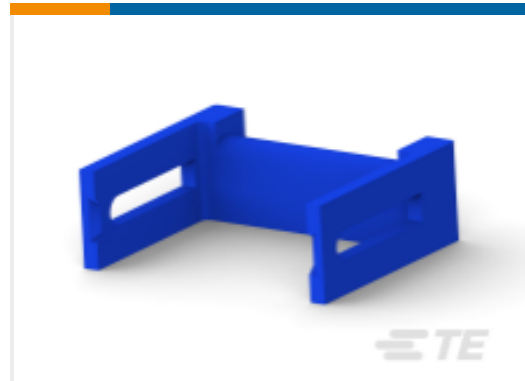
TE Part # 8-1393252-6
W67-X2Q52-30=M6/M7/M9/W6/W7

Also in the Series | Potter & Brumfield W6



Circuit Breakers(71)

Customers Also Bought



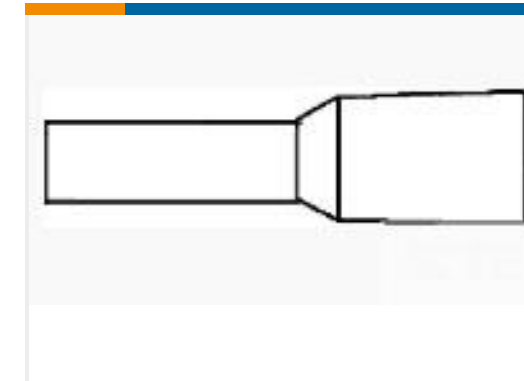
TE Part #1437024-5
Female Socket Connectors: Strain Relief



TE Part #1546413-3
ETHERNET RJ-45 BLKHD PASSTHRU



TE Part #1617037-9
HFW5A1201K00 = HFW 5AMP RELAY



TE Part #1-966067-6
ADERENDHUELSE N BL



TE Part #1-2176087-1
RP 1J 0.166W 86R6 0.1% 25PPM 1K RL



TE Part #102159-9
AMP-LATCH UNIVERSAL HEADERS



TE Part #1-1393028-1
P&B SSR SLIM INPUT AC MODULES



TE Part #1617169-2
JMSWDD-18XP = M39016/21-011P



Documents

CAD Files

Customer View Model

[ENG_CVM_7-1393252-8_1106.3d_igs.zip](#)

English

Customer View Model

[ENG_CVM_7-1393252-8_1106.3d_stp.zip](#)

English

Customer View Model

[ENG_CVM_7-1393252-8_1106.2d_dxf.zip](#)

English

3D PDF

English

By downloading the CAD file I accept and agree to the [Terms and Conditions](#) of use.

Datasheets & Catalog Pages

[W6/W9 Magnetic Hydraulic Circuit Breaker](#)

English