

R10-E1W2-S800 ✓ ACTIVE

Potter & Brumfield | Potter & Brumfield R10

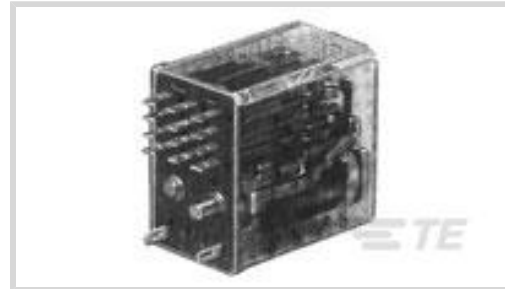
TE Internal #: 8-1393765-7

Potter & Brumfield R10, Power Relays, Industrial Panel Plug-In, Monostable, DC, 150 – 200mW Coil Power Rating Class, 180mW Coil Power Rating DC

[View on TE.com >](#)



Relays, Contactors & Switches > Relays > Power Relays



Power Relay Type: **Industrial Panel Plug-In**

Coil Magnetic System: **Monostable, DC**

Coil Power Rating Class: **150 – 200 mW**

Coil Power Rating DC: **180 mW**

Coil Resistance: **800 Ω**

Features

Product Type Features

| | |
|------------------|--------------------------|
| Power Relay Type | Industrial Panel Plug-In |
|------------------|--------------------------|

Electrical Characteristics

| | |
|--|----------------|
| Insulation Initial Dielectric Between Coil & Contact Class | 500 – 1000 V |
| Insulation Initial Dielectric Between Contacts & Coil | 500 Vrms |
| Actuating System | DC |
| Insulation Initial Dielectric Between Open Contacts | 500 Vrms |
| Insulation Initial Dielectric Between Adjacent Contacts | 1000 Vrms |
| Insulation Initial Resistance | 10000 MΩ |
| Coil Magnetic System | Monostable, DC |
| Coil Power Rating Class | 150 – 200 mW |
| Coil Power Rating DC | 180 mW |
| Coil Resistance | 800 Ω |
| Coil Voltage Rating | 12 VDC |
| Contact Switching Load (Min) | 300mA @ 12V |
| Contact Voltage Rating | 120 VAC |

Body Features

| | |
|----------------|---------------|
| Product Weight | 40 g[1.41 oz] |
|----------------|---------------|

Contact Features



| | |
|------------------------------|--------------------------|
| Contact Special Features | Bifurcated/Twin Contacts |
| Contact Arrangement | 2 Form C (CO) |
| Contact Current Class | 5 – 10 A, 16 A |
| Contact Current Rating (Max) | 7.5 A |
| Contact Material | AgCdO |
| Contact Number of Poles | 2 |
| Terminal Type | Plug-In, Solder |

Mechanical Attachment

| | |
|---------------------|--------|
| Relay Mounting Type | Socket |
|---------------------|--------|

Dimensions

| | |
|---------------------------|-------------------|
| Length Class (Mechanical) | 20 – 25 mm |
| Height Class (Mechanical) | 30 – 40 mm |
| Width Class (Mechanical) | 16 – 20 mm |
| Product Width | 18.7 mm[.736 in] |
| Product Length | 24.1 mm[.949 in] |
| Product Height | 30.2 mm[1.189 in] |

Usage Conditions

| | |
|---|---------------|
| Environmental Ambient Temperature Class | 70 – 85 °C |
| Environmental Ambient Temperature (Max) | 75 °C[167 °F] |
| Operating Temperature Range | -55 – 75 °C |

Packaging Features

| | |
|------------------|---------|
| Packaging Method | Package |
|------------------|---------|

Product Compliance

[For compliance documentation, visit the product page on TE.com>](#)

| | |
|---|---|
| EU RoHS Directive 2011/65/EU | Compliant with Exemptions |
| EU ELV Directive 2000/53/EC | Not Compliant |
| China RoHS 2 Directive MIIT Order No 32, 2016 | Restricted Materials Above Threshold |
| EU REACH Regulation (EC) No. 1907/2006 | Current ECHA Candidate List: JAN 2021 (211) Candidate List Declared Against: JAN 2021 (211) SVHC > Threshold: Cadmium oxide (10% in Component Part) Pb (3.7% in Component Part) |



Article Safe Usage Statements:

Use personal protective equipment as required. Do not eat, drink or smoke when using this product. Wash thoroughly after handling. Recycle if possible and dispose of the article by following all applicable governmental regulations relevant to your geographic location.

Halogen Content

Not Yet Reviewed for halogen content

Solder Process Capability

Not applicable for solder process capability

Product Compliance Disclaimer

This information is provided based on reasonable inquiry of our suppliers and represents our current actual knowledge based on the information they provided. This information is subject to change. The part numbers that TE has identified as EU RoHS compliant have a maximum concentration of 0.1% by weight in homogenous materials for lead, hexavalent chromium, mercury, PBB, PBDE, DBP, BBP, DEHP, DIBP, and 0.01% for cadmium, or qualify for an exemption to these limits as defined in the Annexes of Directive 2011/65/EU (RoHS2). Finished electrical and electronic equipment products will be CE marked as required by Directive 2011/65/EU. Components may not be CE marked. Additionally, the part numbers that TE has identified as EU ELV compliant have a maximum concentration of 0.1% by weight in homogenous materials for lead, hexavalent chromium, and mercury, and 0.01% for cadmium, or qualify for an exemption to these limits as defined in the Annexes of Directive 2000/53/EC (ELV). Regarding the REACH Regulation, the information TE provides on SVHC in articles for this part number is based on the latest European Chemicals Agency (ECHA) 'Guidance on requirements for substances in articles' posted at this URL: <https://echa.europa.eu/guidance-documents/guidance-on-reach>

Compatible Parts



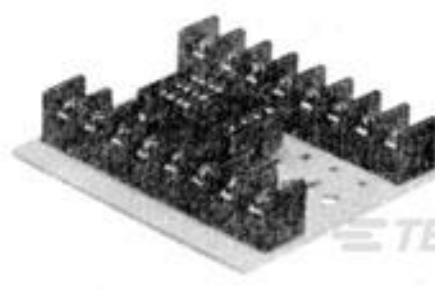
TE Part # 1393143-8
27E125=SOCKET,R10,10,SLG,PHE



TE Part # 1-1393143-1
27E128=SOCKET,R10,10,PC,PHEN



TE Part # 2-1393143-4
27E212=SOCKET,R10,10,PC,PHEN



TE Part # 1393837-1
27E460=SOCKET,R10,,ASSY,2 POLE



TE Part # 2-1393143-1
27E193=SOCKET,R10,11,PC,PHEN



TE Part # 3-1393143-4
27E317=SOCKETS



TE Part # 3-1393143-6
27E342=SOCKETS



TE Part # 4-1393143-1
27E446=SOCKETS

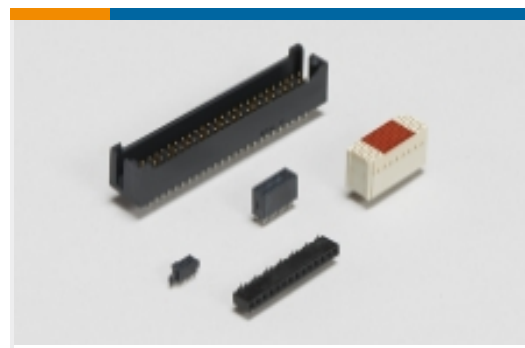


TE Part # 5-1393143-0
27E636=SOCKETS

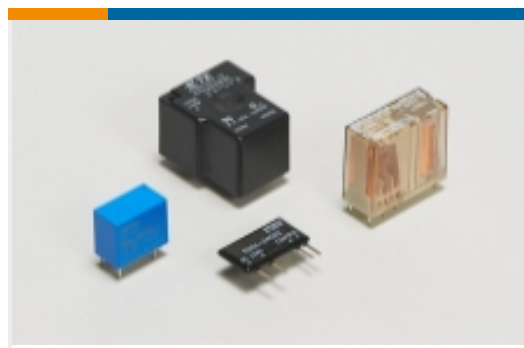


TE Part # 1-1393767-0
R10-E2X2-S800=R10

Also in the Series | **Potter & Brumfield R10**



Board-to-Board Headers & Receptacles(1)

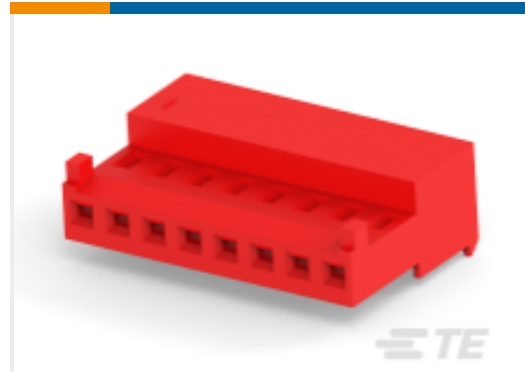


Power Relays(180)



Relay Accessories, Sockets & Clips(34)

Customers Also Bought



TE Part #3-644042-4
Nylon Gold Plated Receptacle: 2.54 mm, With Mating Alignment, MTA 100



TE Part #2-1879234-6
SMD Power Resistor: 7 Watt, 200-2M Ohm



TE Part #1676212-3
RN 0805 18K2 0.1% 10PPM 5KRL



TE Part #1617754-1
FCA-410-1520M=M83536/15-020M



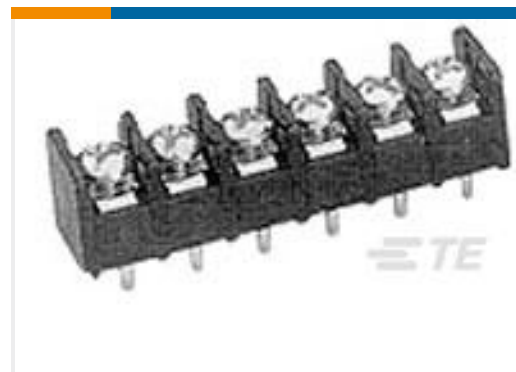
TE Part #160834-2
PIDG PIGGY BACK FASTON TERMINAL



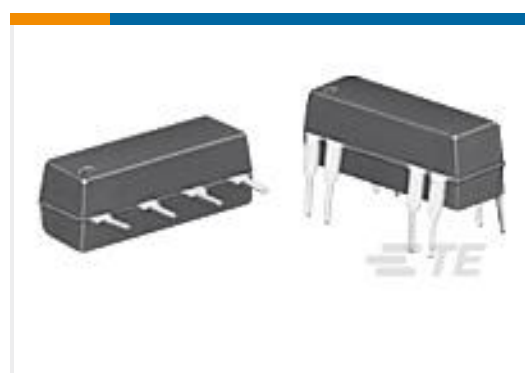
TE Part #1649328-7
RTD14048



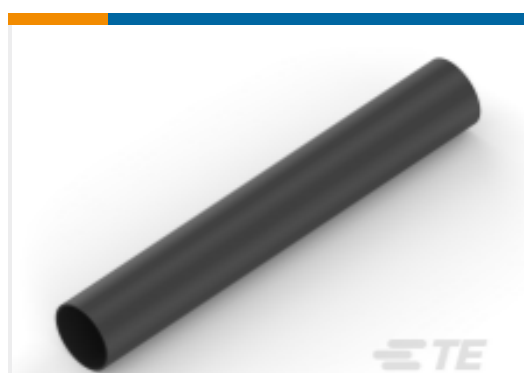
TE Part #2151032-2
OCEAN_2.0_APPLICATOR-S-205D



TE Part #1-1546119-9
3PCR-19-006=3PCR ASSY



TE Part #1-1393771-0
JWD-171-15=REED RELAYS



TE Part #NB11382001
ATUM-52/13-0-STK

Documents

[CAD Files](#)

[3D PDF](#)

[3D](#)

[Customer View Model](#)

[ENG_CVM_CVM_8-1393765-7_A.2d_dxf.zip](#)

English

[Customer View Model](#)

[ENG_CVM_CVM_8-1393765-7_A.3d_igs.zip](#)



English

Customer View Model

[ENG_CVM_CVM_8-1393765-7_A.3d_stp.zip](#)

English

By downloading the CAD file I accept and agree to the [Terms and Conditions](#) of use.

Datasheets & Catalog Pages

[R10 General Purpose Dry Circuit to 7.5 Amp Multicontact AC or DC Relay](#)

English

[Industrial Relays Quick Reference Guide](#)

English

[Industrial Relays Quick Reference Guide](#)

Japanese

[Industrial Relays Quick Reference Guide](#)

Product Specifications

[Definitions, Handling, Processing, Testing and Use of Relays](#)

English