



Energy & Power > Power Cable Accessories > Separable Connectors > Loadbreak Connections > LOADBREAK BUSHING INSERT



Loadbreak Connection Product Availability: **AMERICAS**

Loadbreak Connection Technology: **Cold Applied**

Loadbreak Connection Voltage Class: **≤ 15 kV**

Loadbreak Connection Connector Type: **Compression**

Bushing Type: **200A**

All LOADBREAK BUSHING INSERT (1)

Features

Product Type Features

Loadbreak Connection Technology	Cold Applied
Loadbreak Connection Connector Type	Compression
Bushing Type	200A

Electrical Characteristics

Loadbreak Connection Voltage Class	≤ 15 kV
------------------------------------	---------

Body Features

Loadbreak Connection Conductor Material	Aluminum/Copper
---	-----------------

Operation/Application

Application Type	Bushing Insert
------------------	----------------

Industry Standards

UL Rating	No
-----------	----

Product Availability

Loadbreak Connection Product Availability	AMERICAS
---	----------

Product Compliance

[For compliance documentation, visit the product page on TE.com>](#)



EU RoHS Directive 2011/65/EU	Compliant
EU ELV Directive 2000/53/EC	Not Yet Reviewed
China RoHS 2 Directive MIIT Order No 32, 2016	No Restricted Materials Above Threshold
EU REACH Regulation (EC) No. 1907/2006	Current ECHA Candidate List: JAN 2021 (211) Candidate List Declared Against: JUN 2018 (191) SVHC > Threshold: Not Yet Reviewed
Halogen Content	Low Halogen - Br, Cl, F, I < 900 ppm per homogenous material. Also BFR/CFR/PVC Free
Solder Process Capability	Not applicable for solder process capability

Product Compliance Disclaimer

This information is provided based on reasonable inquiry of our suppliers and represents our current actual knowledge based on the information they provided. This information is subject to change. The part numbers that TE has identified as EU RoHS compliant have a maximum concentration of 0.1% by weight in homogenous materials for lead, hexavalent chromium, mercury, PBB, PBDE, DBP, BBP, DEHP, DIBP, and 0.01% for cadmium, or qualify for an exemption to these limits as defined in the Annexes of Directive 2011/65/EU (RoHS2). Finished electrical and electronic equipment products will be CE marked as required by Directive 2011/65/EU. Components may not be CE marked. Additionally, the part numbers that TE has identified as EU ELV compliant have a maximum concentration of 0.1% by weight in homogenous materials for lead, hexavalent chromium, and mercury, and 0.01% for cadmium, or qualify for an exemption to these limits as defined in the Annexes of Directive 2000/53/EC (ELV). Regarding the REACH Regulation, the information TE provides on SVHC in articles for this part number is based on the latest European Chemicals Agency (ECHA) ‘Guidance on requirements for substances in articles’ posted at this URL: <https://echa.europa.eu/guidance-documents/guidance-on-reach>

Compatible Parts



TE Part # CAT-ELB-IC
LOADBREAK 200A INSULATING CAP



TE Part # CAT-ELB
Load Break Elbow: 200A, 15 and 25 kV



TE Part # FG1871-000
ELB-200-CES-GRD-1

Also in the Series | Raychem ELB



Dead Break Connections(1)

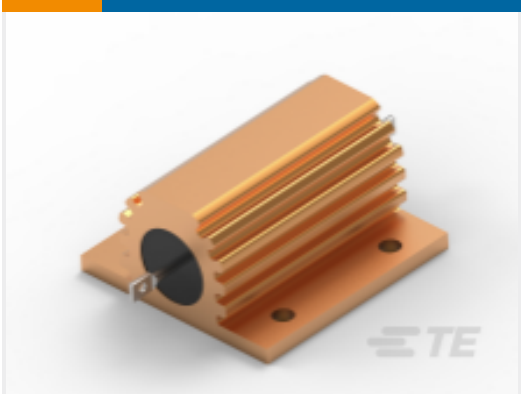


Loadbreak Connections(49)

Customers Also Bought



TE Part #6-1879234-7
SMD Power Resistor: 7 Watt, 200-2M Ohm



TE Part #3-1630019-8
Power Resistors: Aluminum Housed, HSA



TE Part #4-1879352-0
RR02 5% 13R AMMO



TE Part #10210860-00
Water Level Sensors Readily Available



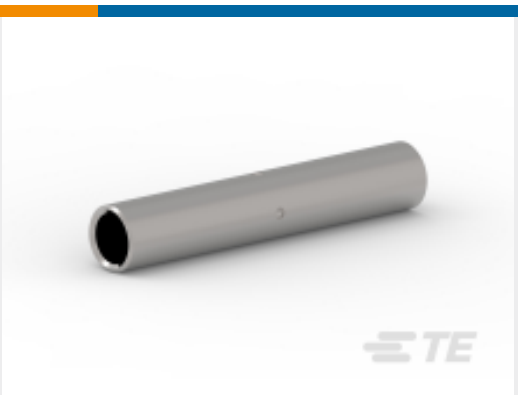
TE Part #FG1886-000
Load Break Elbow: 200A, 15 and 25 kV



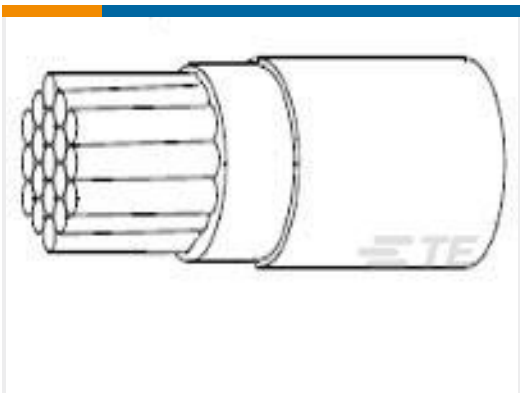
TE Part #6-2271117-2
M12,FEMALE, A CODE,12P,PG9, SHIELDED(AU)



TE Part #324188
TERMINAL,T-N R 4/0 1/2



TE Part #1443403-6
COMP SPLICE CU, LB 1/0 UTILUX



TE Part #261209-000
44A0312-24-9



TE Part #2176087-4
RP 1J 0.166W 73R2 0.1% 25PPM 1K RL

Documents

Product Drawings

ELB-15-200-BI

English

Datasheets & Catalog Pages

LOADBREAK BUSHING INSERT RAYCHEM

English

RAYCHEM LOADBREAK BUSHING INSERT

English

