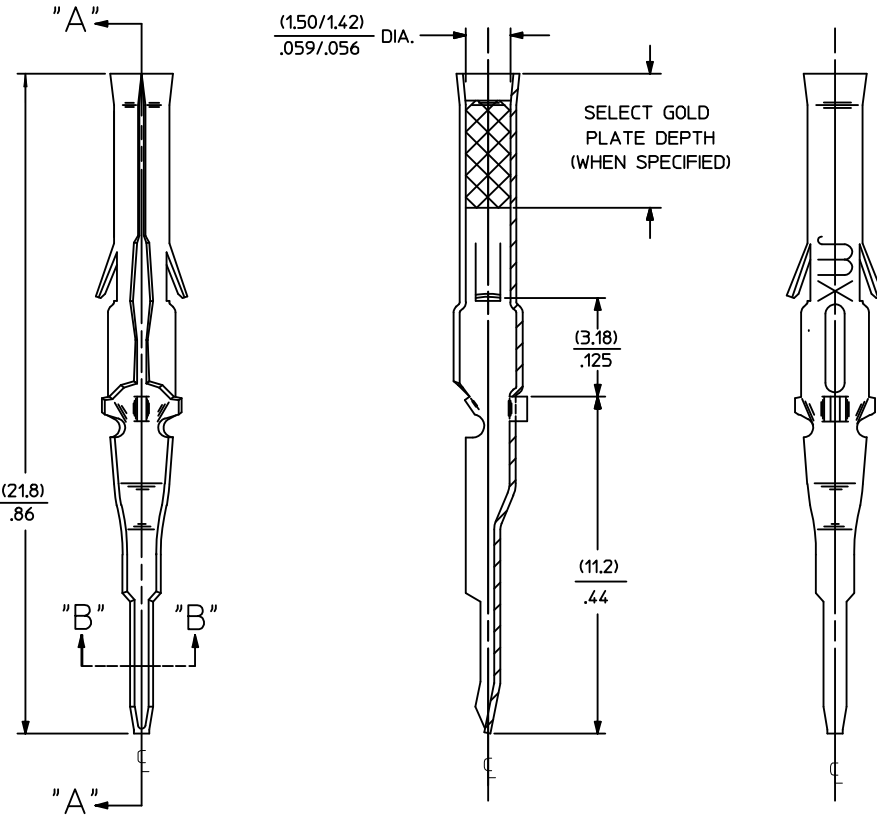
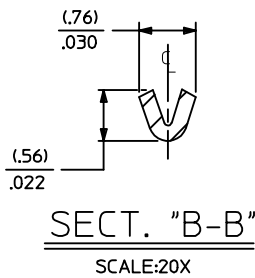
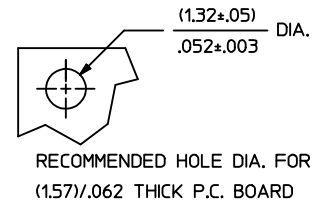
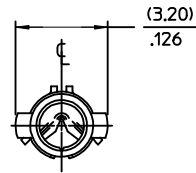


PART NO.	ENG. NO.
02-06-7103	1779-(P909)L
02-06-7104	1779-(P228)L



SELECT GOLD PLATE DEPTH (WHEN SPECIFIED)

SECT. "A-A"

LEGEND

1779-(****)*-*

P=PREPLATE
BLANK=POSTPLATE
FINISH CODE

MATERIAL
BLANK=BRASS (0.20)/.008 THICK

FORM
L=LOOSE

NOTES:

- MATERIAL: BRASS
- FINISH:
 - 909 HOT TIN DIP* (.00254)/.000100 MIN.
 - 228 SELECT GOLD PLATE (.00075)/.000030 MIN. IN CONTACT AREA, SELECT TIN* (.00250)/.000100 MIN. IN TAIL AREA, OVER (.00125)/.000050 MIN. NICKEL OVERALL.
- * THE PRIMARY SHIPPING CARTON WILL BE LABELED, "COMPLIANT TO RoHS DIRECTIVE 2002/95/EC AND ANNEX II OF DIRECTIVE 2000/53/EC". AND CARTONS WITHOUT THIS LABEL MAY CONTAIN PRODUCT WITH TIN-LEAD.
- PRODUCT SPECIFICATION: PS-02-06.
- PACKAGING INFORMATION: NOT AVAILABLE
- TERMINAL FOR USE WITH (1.57)/.062 SERIES HOUSINGS.

OBSOLETE P/N EC NO: DRWN:JLOWE CHKD:ADERR APPR:FSMITH	REV AA	DESCRIPTION 2005/06/13 2005/06/16 2005/06/20	QUALITY SYMBOLS ▽ - 0 ▽ - 0	GENERAL TOLERANCES (UNLESS SPECIFIED)		SCALE 8:1	DESIGN UNITS INCH	THIRD ANGLE PROJECTION	REVISE ON CAD ONLY
				4 PLACES ± --- ± ---	3 PLACES ± --- ± .005	DIMENSION STYLE MM/IN			
				2 PLACES ± 0.13 ± .010	1 PLACE ± 0.25 ± ---	DRAWN BY GEP	DATE 1987/11/02	TERMINAL, FEMALE (1.57)/.062 DIA P.C. TAIL TYPE	
				ANGULAR ± 1/2°		CHECKED BY RW	DATE 1987/11/02	MOLEX MOLEX INCORPORATED	
DRAFT WHERE APPLICABLE MUST REMAIN WITHIN DIMENSIONS				APPROVED BY RAS	DATE 1987/11/02	MATERIAL NO. SEE CHART	DOCUMENT NO. SD-1779-*	SHEET NO. 1 OF 1	
THIS DRAWING CONTAINS INFORMATION THAT IS PROPRIETARY TO MOLEX INCORPORATED AND SHOULD NOT BE USED WITHOUT WRITTEN PERMISSION									