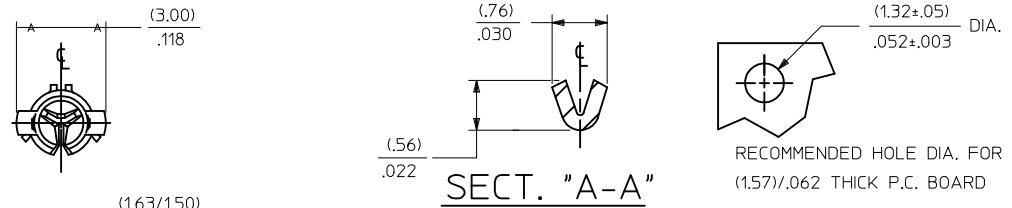
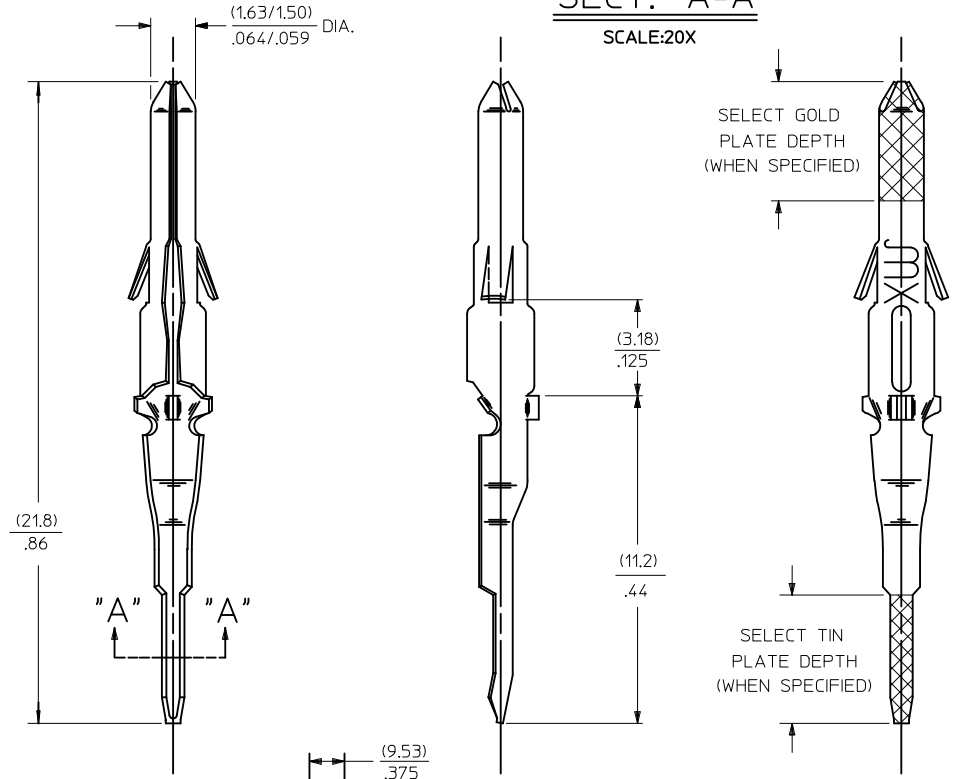


13	12	11	10	9	8	7	6	5	4	3	2	1778
PART NO.		ENG. NO.										
02-06-8103		1778-P(909)L										
02-06-6122		1778-(228)L										



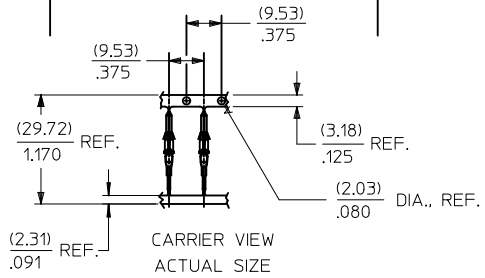
SECT. "A-A"
SCALE:20X

LEGEND
1778-(****)*
P=PREPLATE
BLANK=POSTPLATE
FINISH CODE
FORM
L=LOOSE



NOTES:

- MATERIAL: BRASS
- FINISH:
 - * 909 HOT TIN DIP (.00250)/.000100 MIN.
 - * 228 SELECT GOLD PLATE (.00075)/.000030 MIN. IN CONTACT AREA, SELECT TIN (.00250)/.000100 MIN. IN TAIL AREA, OVER (.00125)/.000050 MIN. NICKEL OVERALL.
 - * THE PRIMARY SHIPPING CARTON WILL BE LABELED, "COMPLIANT TO RoHS DIRECTIVE" 2002/95/EC AND ANNEX II OF DIRECTIVE 2000/53/EC", AND CARTONS WITHOUT THIS LABEL MAY CONTAIN PRODUCT WITH TIN-LEAD.
- PRODUCT SPECIFICATION: PS-02-06.
- PACKAGING INFORMATION: NOT AVAILABLE
- TERMINAL FOR USE WITH (1.57)/.062 SERIES HOUSINGS.



AC	REVISED/REDRAWN UCP 2004-2367 RHOLTS 5/24/04
AB	OBSOLETE P/N UCR2002-0270 COMERCI 01/9/26
AA2	SHOW SEL TIN-LEAD PER ECN #US 1218 6-5-95 RW
AA1	X-REMOVE (P913) ECR U2 0220 GC 2/10/92 RW
AA	REV. & REDRAWN PER ECR 10372 GEP 12-3-87 RW
LTR.	REVISIONS

REVISED/REDRAWN EC NO: UCP2004-2367 DRAWN:RHOLTS 2004/07/16 CHKD:FSMITH 2004/07/16 APPR:FSMITH 2004/08/05	QUALITY SYMBOLS ▽ -0 ▽ -0	GENERAL TOLERANCES (UNLESS SPECIFIED)		SCALE 6:1	DESIGN UNITS INCH	THIRD ANGLE PROJECTION	REVISE ON CAD ONLY		
				DIMENSION STYLE IN/MM		TITLE TERMINAL, MALE, .062 DIA., P.C. TAIL			
		4 PLACES ± --- ± --- 3 PLACES ± --- ± .005 2 PLACES ± 0.13 ± .010 1 PLACE ± 0.25 ± ---		DRAWN BY GEP	DATE 1987/11/02	MATERIAL NO. DOCUMENT NO. SHEET NO. SEE CHART SD-1778-* 1 OF 1			
		ANGULAR ± 1/2° DRAFT WHERE APPLICABLE MUST REMAIN WITHIN DIMENSIONS		CHECKED BY RW	DATE 1987/11/02	APPROVED BY RAS			
AC	REV	THIS DRAWING CONTAINS INFORMATION THAT IS PROPRIETARY TO MOLEX INCORPORATED AND SHOULD NOT BE USED WITHOUT WRITTEN PERMISSION							