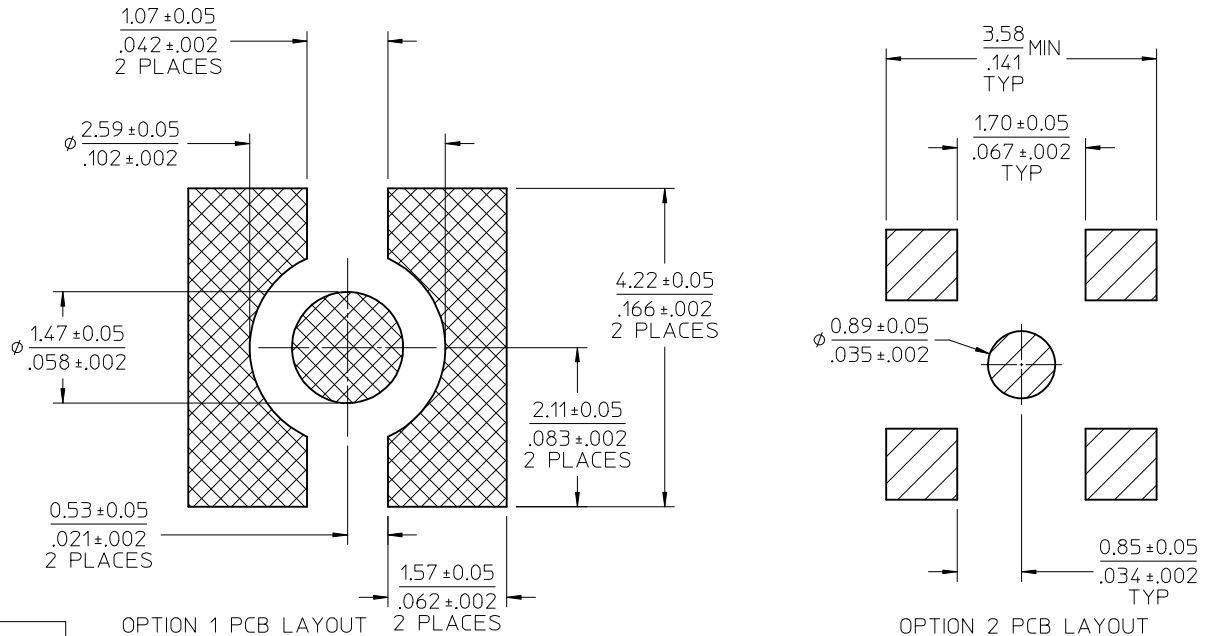
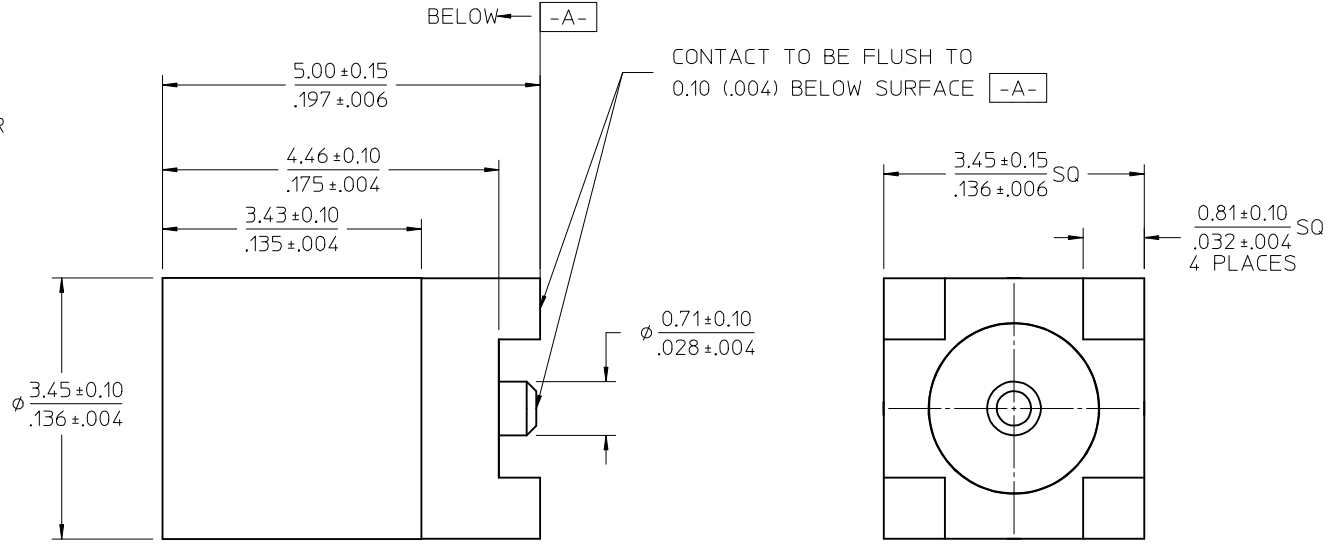
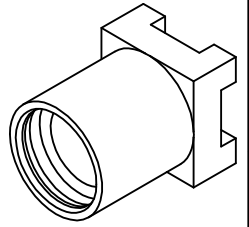


MATERIALS AND FINISHES

BODY BRASS
PLATED GOLD

CENTER CONTACT BERYLLIUM COPPER
PLATED GOLD

INSULATOR TEFLON



PS-89675-1920	ELECTRO/MECH PERFORM.
SPECIFICATION	DESCRIPTION

73415-2064	73415-2061. ONE PER BAG
73415-2063	73415-2061 WITH TAPE & REEL
73415-2062	73415-2060 WITH TAPE & REEL
73415-2061	PER COMMERCIAL REQUIREMENTS, PACKING TRAY
73415-2060	PER MILITARY REQUIREMENTS, PACKING TRAY
PART NO.	PLATING

OPTION 1 PCB LAYOUT

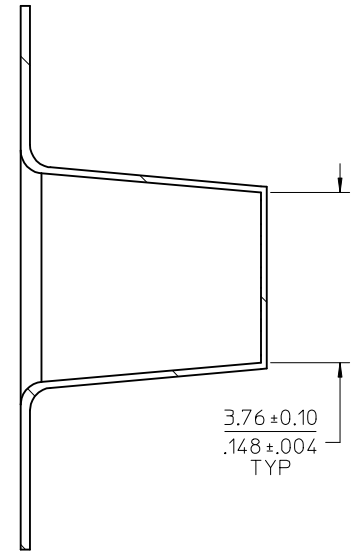
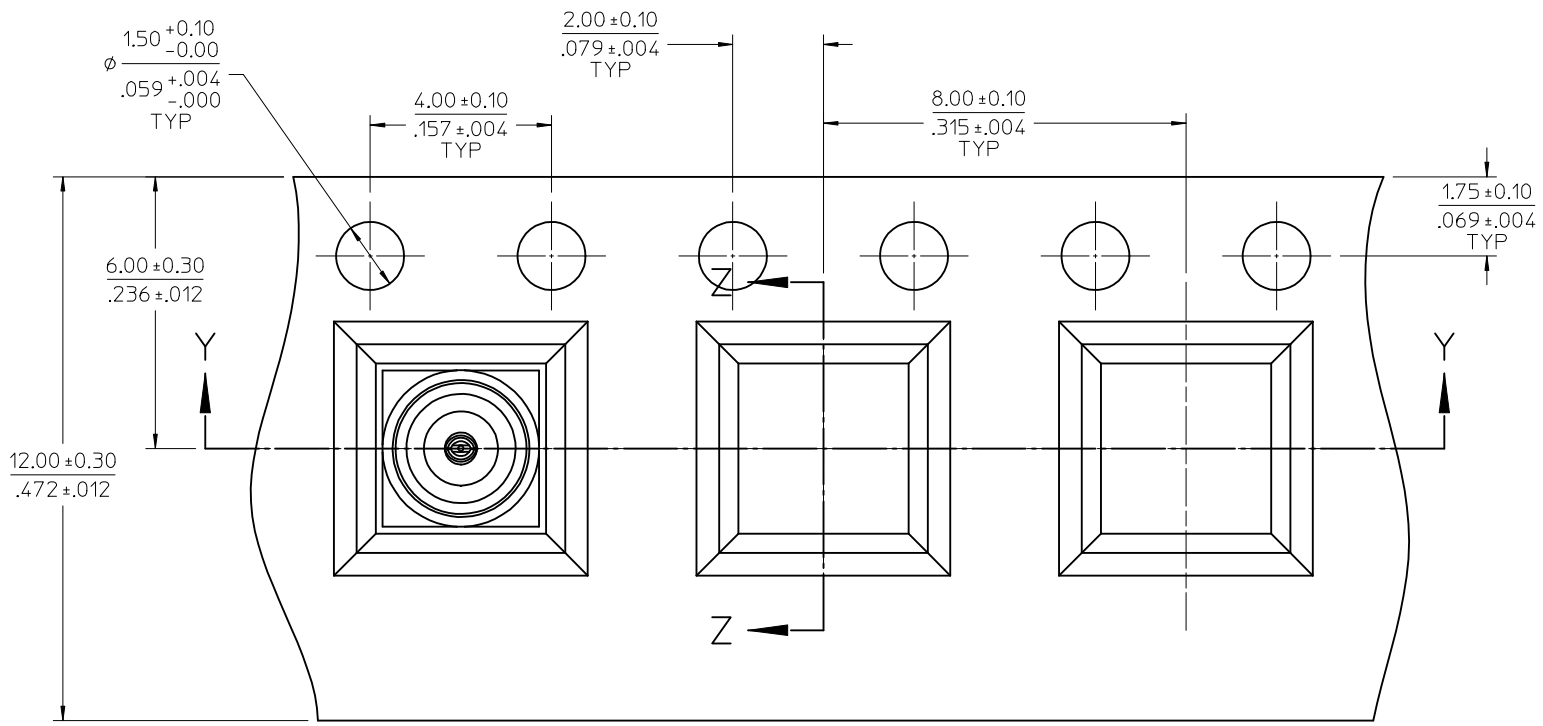
OPTION 2 PCB LAYOUT

CHG:73415-2060-2061 PACKING UPDATE TO TRAY EWR RF15-E384	EC NO: URF2016-0367	2015/11/05	QUALITY SYMBOLS
DRWN:YCHENG	CHKD:	APPR:YCHENG	DESCRIPTION
REV			

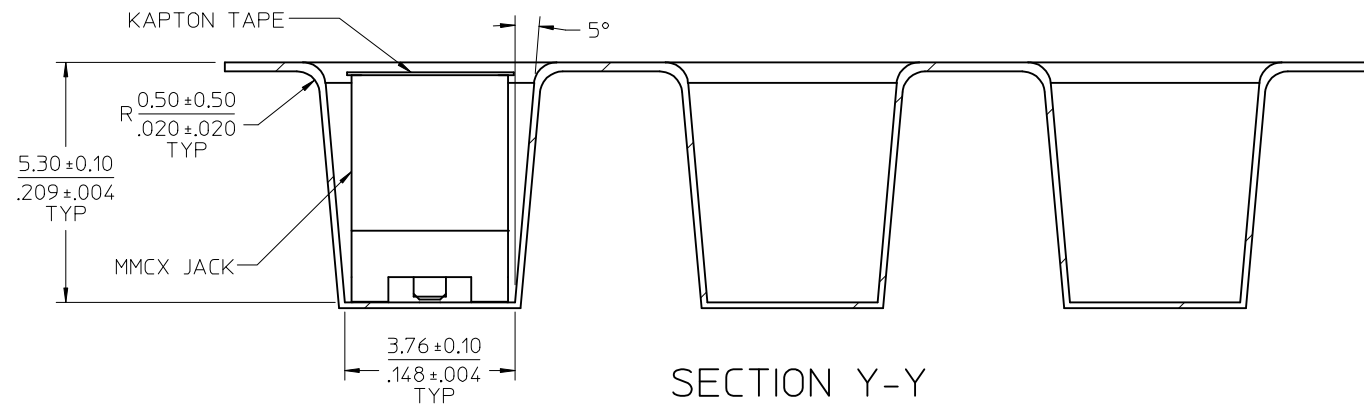
GENERAL TOLERANCES (UNLESS SPECIFIED)	
mm	INCH
4 PLACES ± .005	± .0004
3 PLACES ± .004	± .0003
2 PLACES ± .003	± .0002
1 PLACE ± .002	± .0001
0 PLACE ± .001	± .0000
ANGULAR ± 2 °	
DRAFT WHERE APPLICABLE MUST REMAIN WITHIN DIMENSIONS	

DIMENSION STYLE	
MM/IN	
DRAWN BY	DATE
TEF	2000/04/18
CHECKED BY	DATE
SSS	2000/04/18
APPROVED BY	DATE
GMH	2000/04/18
MATERIAL NO.	
SEE TABLE	
SIZE	
C	

SCALE	DESIGN UNITS	THIRD ANGLE PROJECTION
	METRIC	
MMCX JACK, VERTICAL PCB/SMT 50 OHMS MMCX-J/PCB		
molex		
DOCUMENT NO.	SHEET NO.	
SD-73415-206	1 OF 4	



SECTION Z-Z



SECTION Y-Y

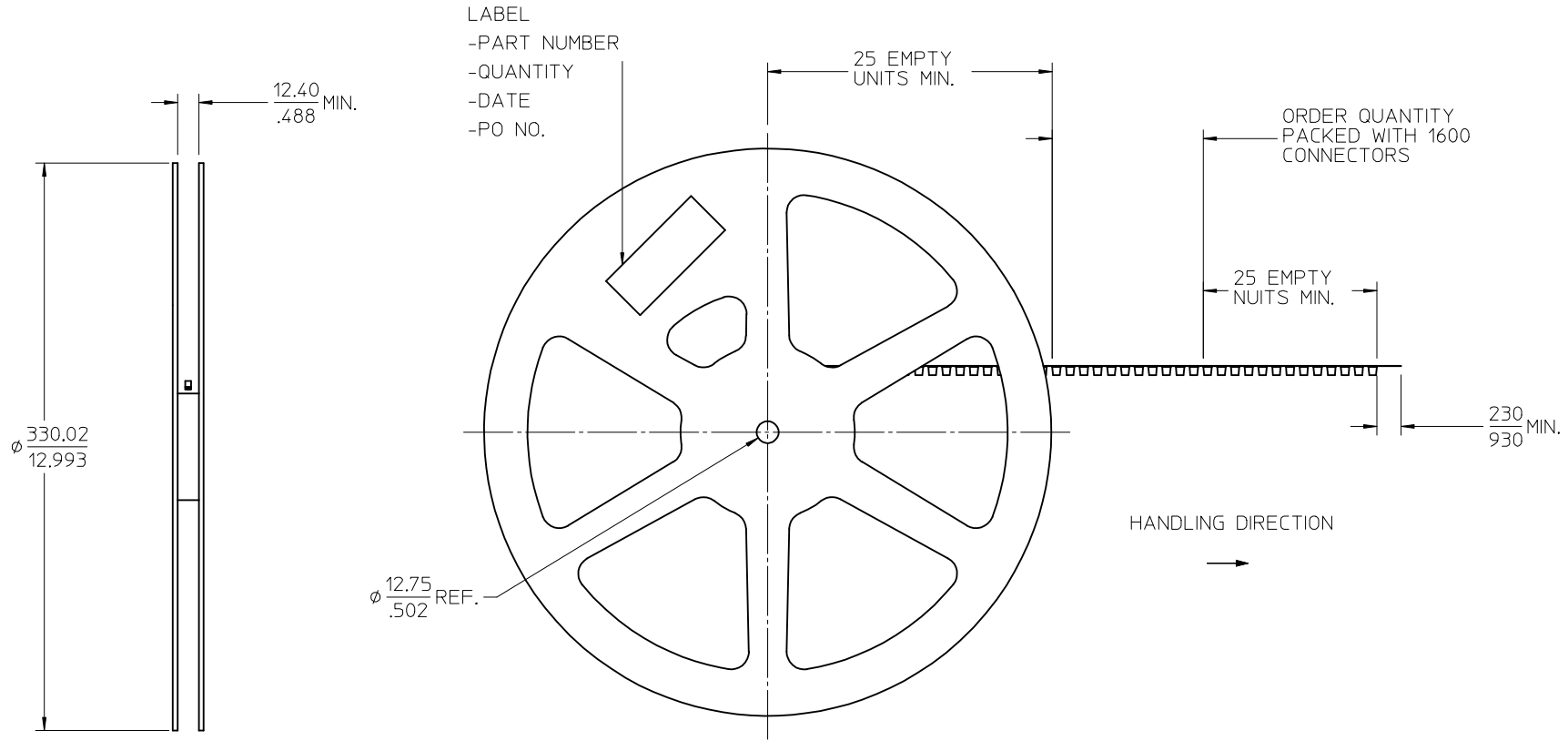
SEE SHEET 1	QUALITY SYMBOLS
EC NO: URF2016-0367	$\nabla = 0$
DRWN: YCHENG 2015/11/05	$\nabla = 0$
CHKD:	$\nabla = 0$
APPR: YCHENG 2015/11/09	
REV	DESCRIPTION

GENERAL TOLERANCES (UNLESS SPECIFIED)	
mm	INCH
4 PLACES ± ---	± ---
3 PLACES ± ---	± ---
2 PLACES ± ---	± ---
1 PLACE ± ---	± ---
0 PLACE ±	±
ANGULAR ± 2 °	
DRAFT WHERE APPLICABLE MUST REMAIN WITHIN DIMENSIONS	

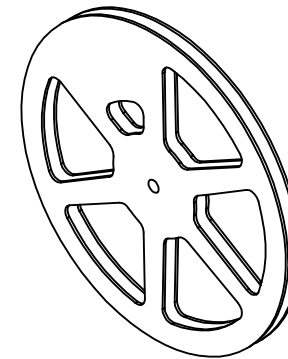
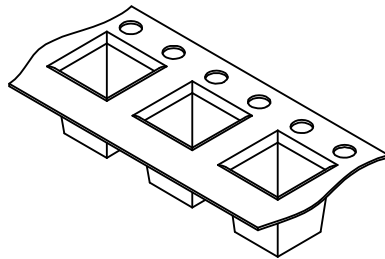
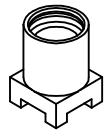
DIMENSION STYLE	
MM/IN	
DRAWN BY	DATE
TEF	2000/04/18
CHECKED BY	DATE
SSS	2000/04/18
APPROVED BY	DATE
GMH	2000/04/18
MATERIAL NO.	
SEE SHEET 1	
SIZE C	

SCALE	DESIGN UNITS	THIRD ANGLE PROJECTION
	METRIC	
TITLE		
MMCX JACK, VERTICAL PCB/SMT 50 OHMS MMCX-J/PCB		
molex		
DOCUMENT NO.	SHEET NO.	
SD-73415-206	2 OF 4	

NOTE:
13" REEL SIZE FOR 1600 PIECES

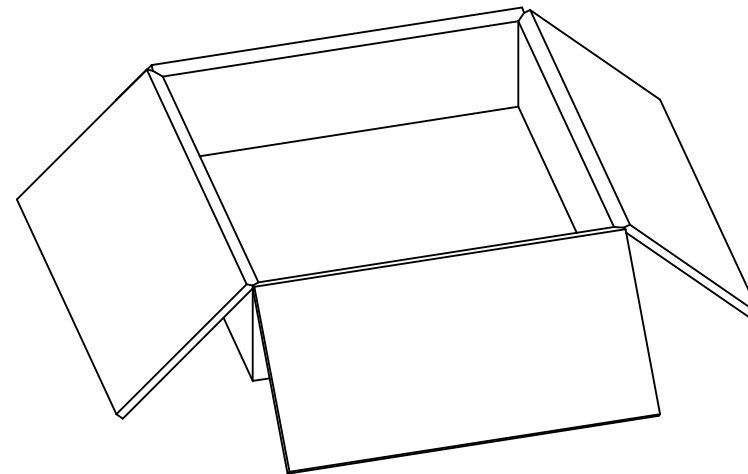


SEE SHEET 1 EC NO: URF2016-0367 DRAWN: YCHENG 2015/11/05 CHKD: APPR: YCHENG 2015/11/09	QUALITY SYMBOLS $\nabla = 0$ $\nabla = 0$ $\nabla = 0$	GENERAL TOLERANCES (UNLESS SPECIFIED) <table border="1"> <tr> <td></td> <td>mm</td> <td>INCH</td> </tr> <tr> <td>4 PLACES</td> <td>± .---</td> <td>± .---</td> </tr> <tr> <td>3 PLACES</td> <td>± .---</td> <td>± .---</td> </tr> <tr> <td>2 PLACES</td> <td>± .---</td> <td>± .---</td> </tr> <tr> <td>1 PLACE</td> <td>± .---</td> <td>± .---</td> </tr> <tr> <td>0 PLACE</td> <td>±</td> <td>±</td> </tr> </table>		mm	INCH	4 PLACES	± .---	± .---	3 PLACES	± .---	± .---	2 PLACES	± .---	± .---	1 PLACE	± .---	± .---	0 PLACE	±	±	DIMENSION STYLE MM/IN	SCALE DESIGN UNITS METRIC	THIRD ANGLE PROJECTION
		mm	INCH																				
	4 PLACES	± .---	± .---																				
	3 PLACES	± .---	± .---																				
2 PLACES	± .---	± .---																					
1 PLACE	± .---	± .---																					
0 PLACE	±	±																					
DESCRIPTION B	ANGULAR ± 2 °	DRAFT WHERE APPLICABLE MUST REMAIN WITHIN DIMENSIONS	DRAWN BY TEF	DATE 2000/04/18	TITLE MMCX JACK, VERTICAL PCB/SMT 50 OHMS MMCX-J/PCB																		
			CHECKED BY SSS	DATE 2000/04/18	molex																		
			APPROVED BY GMH	DATE 2000/04/18	MATERIAL NO. SEE SHEET 1																		
					DOCUMENT NO. SD-73415-206																		
					SHEET NO. 3 OF 4																		



PART NO.
73415-2062/73415-2063

1600 SET PER 13" REEL



8000 CONNECTORS PER
OUTER CARTON BOX
339 X 339 X 100 REF.

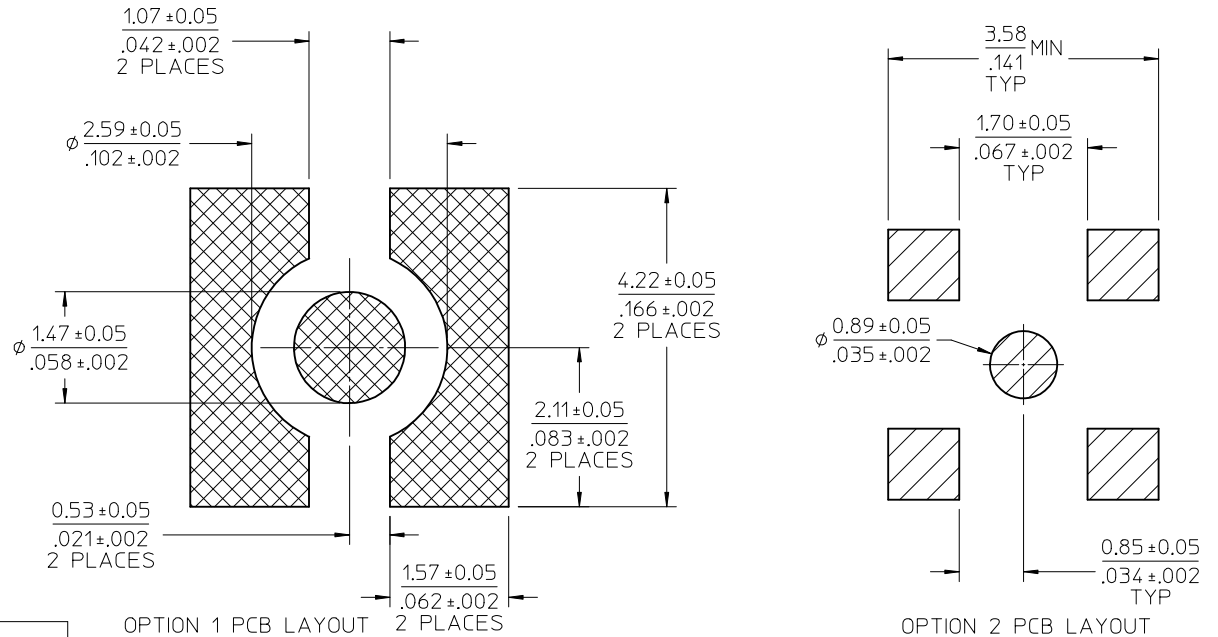
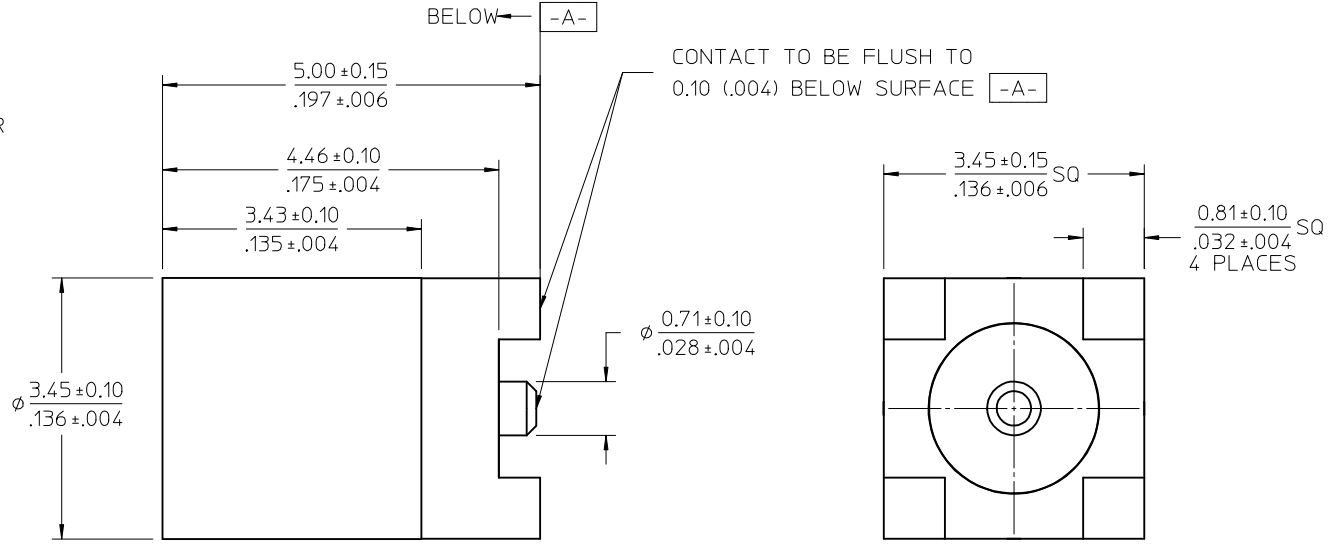
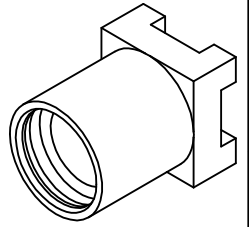
SEE SHEET 1 EC NO: URF2016-0367 DRAWN: YCHENG 2015/11/05 CHKD: APPR: YCHENG 2015/11/09	QUALITY SYMBOLS	GENERAL TOLERANCES (UNLESS SPECIFIED)		DIMENSION STYLE MM/IN		SCALE	DESIGN UNITS METRIC	THIRD ANGLE PROJECTION	
	▽=0	mm	INCH	DRAWN BY	DATE	TITLE	MMCX JACK, VERTICAL PCB/SMT 50 OHMS MMCX-J/PCB molex		
	▽=0	4 PLACES ±	3 PLACES ±	TEF	2000/04/18				
	▽=0	3 PLACES ±	2 PLACES ±	CHECKED BY	DATE				
▽=0	2 PLACES ±	1 PLACE ±	SSS	2000/04/18					
	1 PLACE ±	0 PLACE ±	APPROVED BY	DATE					
			GMH	2000/04/18					
			ANGULAR ± 2 °		MATERIAL NO.	DOCUMENT NO.		SHEET NO.	
			DRAFT WHERE APPLICABLE MUST REMAIN WITHIN DIMENSIONS		SEE SHEET 1	SD-73415-206		4 OF 4	
			THIS DRAWING CONTAINS INFORMATION THAT IS PROPRIETARY TO MOLEX INCORPORATED AND SHOULD NOT BE USED WITHOUT WRITTEN PERMISSION						

MATERIALS AND FINISHES

BODY BRASS
PLATED GOLD

CENTER CONTACT BERYLLIUM COPPER
PLATED GOLD

INSULATOR TEFLON



PS-89675-1920	ELECTRO/MECH PERFORM.
SPECIFICATION	DESCRIPTION

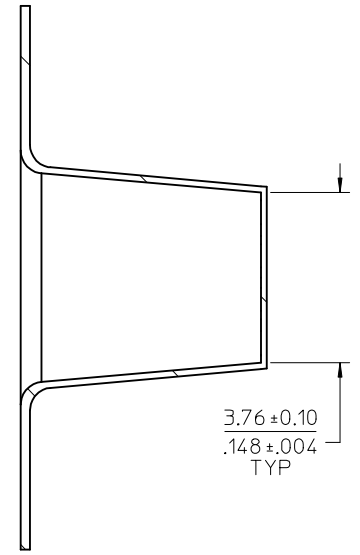
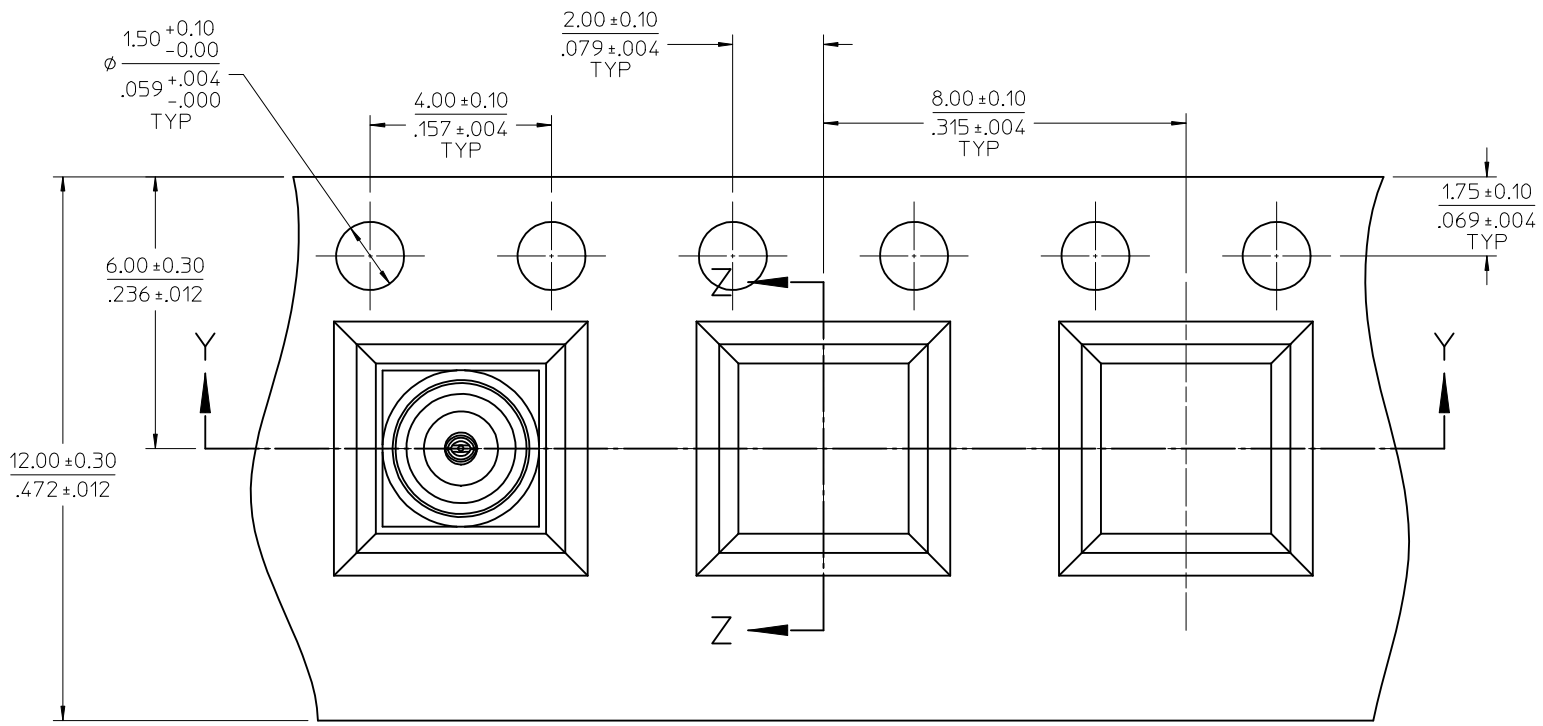
73415-2064	73415-2061. ONE PER BAG
73415-2063	73415-2061 WITH TAPE & REEL
73415-2062	73415-2060 WITH TAPE & REEL
73415-2061	PER COMMERCIAL REQUIREMENTS, PACKING TRAY
73415-2060	PER MILITARY REQUIREMENTS, PACKING TRAY
PART NO.	PLATING

CHG:73415-2060-2061 PACKING UPDATE TO TRAY EWR RF15-E384	EC NO: URF2016-0367 DRWN:YCHENG 2015/11/05 CHKD: APPR:YCHENG 2015/11/09	QUALITY SYMBOLS ▽=0 ▽=0 ▽=0
---	--	--------------------------------------

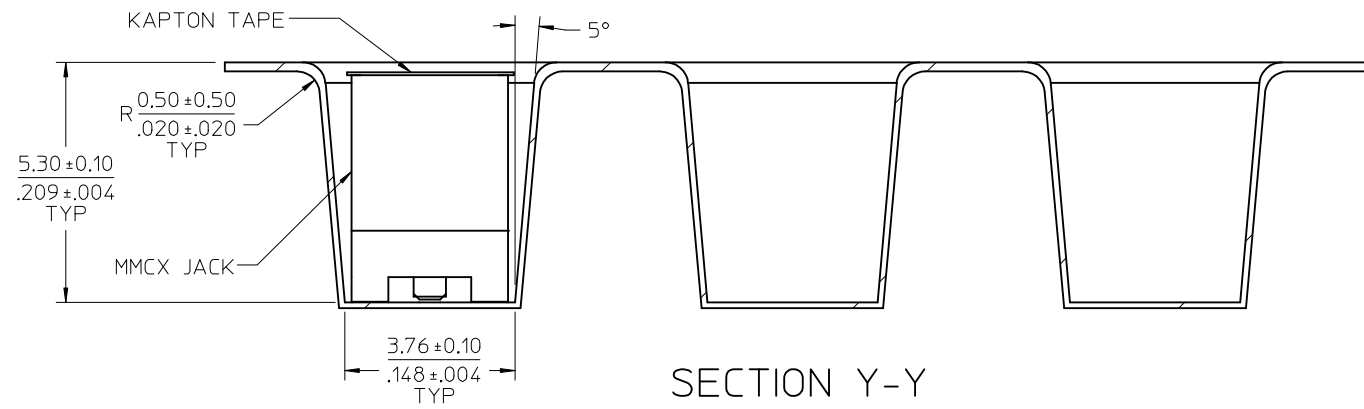
GENERAL TOLERANCES (UNLESS SPECIFIED)	
mm	INCH
4 PLACES ± .005	± .0005
3 PLACES ± .004	± .0004
2 PLACES ± .003	± .0003
1 PLACE ± .002	± .0002
0 PLACE ± .001	± .0001
ANGULAR ± 2 °	
DRAFT WHERE APPLICABLE MUST REMAIN WITHIN DIMENSIONS	

DIMENSION STYLE MM/IN	
DRAWN BY	DATE
TEF	2000/04/18
CHECKED BY	DATE
SSS	2000/04/18
APPROVED BY	DATE
GMH	2000/04/18
MATERIAL NO.	
SEE TABLE	

SCALE	DESIGN UNITS METRIC	THIRD ANGLE PROJECTION
MMCX JACK, VERTICAL PCB/SMT 50 OHMS MMCX-J/PCB		
molex		
DOCUMENT NO.	SHEET NO.	
SD-73415-206	1 OF 4	



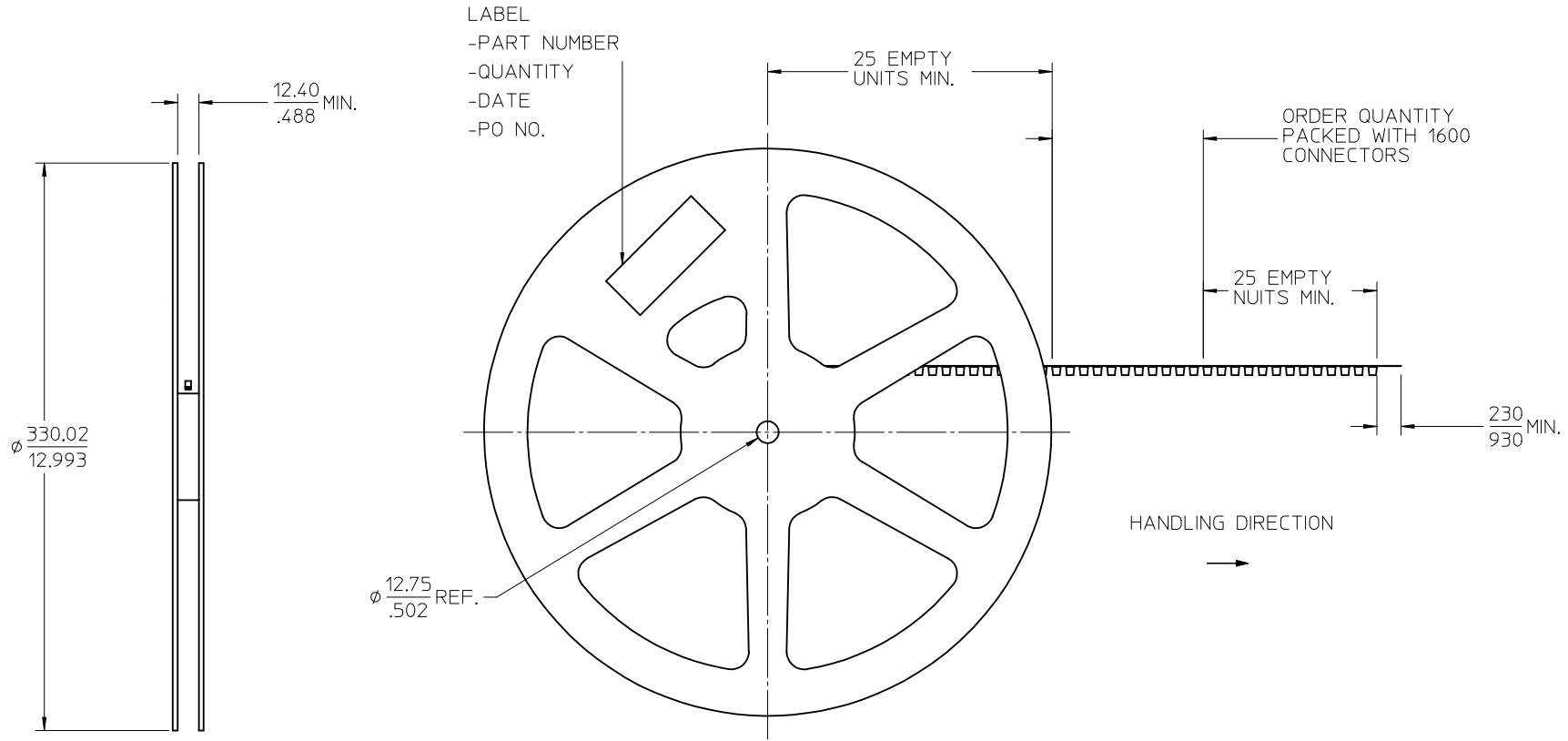
SECTION Z-Z



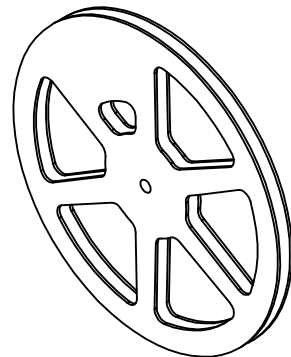
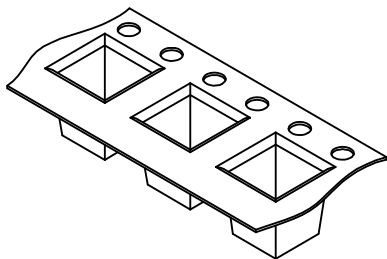
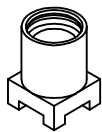
SECTION Y-Y

SEE SHEET 1 EC NO: URF2016-0367 DRWN: YCHENG 2015/11/05 CHKD: APPR: YCHENG 2015/11/09	QUALITY SYMBOLS $\nabla = 0$ $\nabla = 0$ $\nabla = 0$	GENERAL TOLERANCES (UNLESS SPECIFIED)		DIMENSION STYLE MM/IN		SCALE	DESIGN UNITS METRIC	THIRD ANGLE PROJECTION			
		4 PLACES \pm --- \pm --- 3 PLACES \pm --- \pm --- 2 PLACES \pm --- \pm --- 1 PLACE \pm --- \pm --- 0 PLACE \pm --- \pm ---	mm INCH	DRAWN BY TEF	DATE 2000/04/18	TITLE MMCX JACK, VERTICAL PCB/SMT 50 OHMS MMCX-J/PCB	CHECKED BY SSS	DATE 2000/04/18	APPROVED BY GMH	DATE 2000/04/18	MATERIAL NO. SEE SHEET 1
DRAFT WHERE APPLICABLE MUST REMAIN WITHIN DIMENSIONS		ANGULAR $\pm 2^\circ$		SIZE C		THIS DRAWING CONTAINS INFORMATION THAT IS PROPRIETARY TO MOLEX INCORPORATED AND SHOULD NOT BE USED WITHOUT WRITTEN PERMISSION					

NOTE:
13" REEL SIZE FOR 1600 PIECES

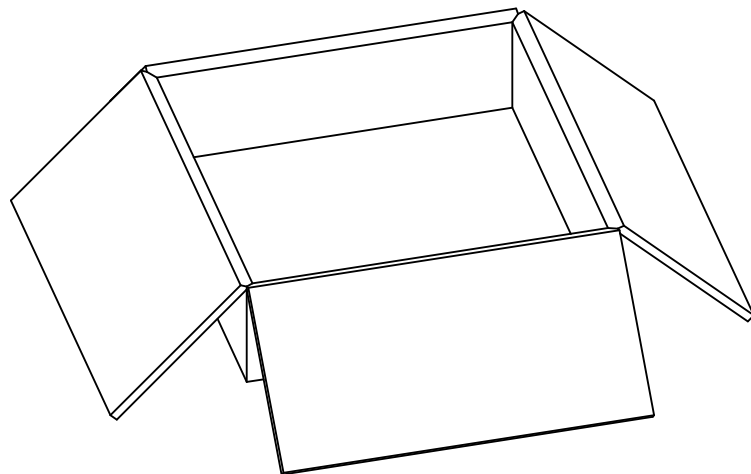


SEE SHEET 1 EC NO: URF2016-0367 DRAWN: YCHENG 2015/11/05 CHKD: APPR: YCHENG 2015/11/09	QUALITY SYMBOLS $\nabla = 0$ $\nabla = 0$ $\nabla = 0$	GENERAL TOLERANCES (UNLESS SPECIFIED) <table border="1"> <tr> <th></th> <th>mm</th> <th>INCH</th> </tr> <tr> <td>4 PLACES</td> <td>± .15</td> <td>± .005</td> </tr> <tr> <td>3 PLACES</td> <td>± .10</td> <td>± .004</td> </tr> <tr> <td>2 PLACES</td> <td>± .075</td> <td>± .003</td> </tr> <tr> <td>1 PLACE</td> <td>± .05</td> <td>± .002</td> </tr> <tr> <td>0 PLACE</td> <td>± .025</td> <td>± .001</td> </tr> </table>		mm	INCH	4 PLACES	± .15	± .005	3 PLACES	± .10	± .004	2 PLACES	± .075	± .003	1 PLACE	± .05	± .002	0 PLACE	± .025	± .001	DIMENSION STYLE MM/IN DRAWN BY: TEF DATE: 2000/04/18 CHECKED BY: SSS DATE: 2000/04/18 APPROVED BY: GMH DATE: 2000/04/18	SCALE DESIGN UNITS METRIC THIRD ANGLE PROJECTION	TITLE MMCX JACK, VERTICAL PCB/SMT 50 OHMS MMCX-J/PCB molex
		mm	INCH																				
	4 PLACES	± .15	± .005																				
	3 PLACES	± .10	± .004																				
2 PLACES	± .075	± .003																					
1 PLACE	± .05	± .002																					
0 PLACE	± .025	± .001																					
MATERIAL NO. SEE SHEET 1	DOCUMENT NO. SD-73415-206	SHEET NO. 3 OF 4																					
DRAFT WHERE APPLICABLE MUST REMAIN WITHIN DIMENSIONS			THIS DRAWING CONTAINS INFORMATION THAT IS PROPRIETARY TO MOLEX INCORPORATED AND SHOULD NOT BE USED WITHOUT WRITTEN PERMISSION																				
			SIZE																				



PART NO.
73415-2062/73415-2063

1600 SET PER 13" REEL



8000 CONNECTORS PER
OUTER CARTON BOX
339 X 339 X 100 REF.

SEE SHEET 1 EC NO: URF2016-0367 DRAWN: YCHENG 2015/11/05 CHKD: APPR: YCHENG 2015/11/09	QUALITY SYMBOLS	DESCRIPTION
REV		

GENERAL TOLERANCES (UNLESS SPECIFIED)	
	mm INCH
4 PLACES	± --- ± ---
3 PLACES	± --- ± ---
2 PLACES	± --- ± ---
1 PLACE	± --- ± ---
0 PLACE	± ±
ANGULAR ± 2 °	
DRAFT WHERE APPLICABLE MUST REMAIN WITHIN DIMENSIONS	

DIMENSION STYLE	
MM/IN	
DRAWN BY	DATE
TEF	2000/04/18
CHECKED BY	DATE
SSS	2000/04/18
APPROVED BY	DATE
GMH	2000/04/18
MATERIAL NO.	
SEE SHEET 1	

SCALE	DESIGN UNITS	THIRD ANGLE PROJECTION
	METRIC	
TITLE		
MMCX JACK, VERTICAL PCB/SMT 50 OHMS MMCX-J/PCB		
molex		
DOCUMENT NO.	SHEET NO.	
SD-73415-206	4 OF 4	
THIS DRAWING CONTAINS INFORMATION THAT IS PROPRIETARY TO MOLEX INCORPORATED AND SHOULD NOT BE USED WITHOUT WRITTEN PERMISSION		