

## WL700 LED Work Light

Item no: 2481635

### 1 Dismantling recommendations

- Disconnect from power supply.
- Ask help from a professional if needed.

### 2 Dismantling instructions

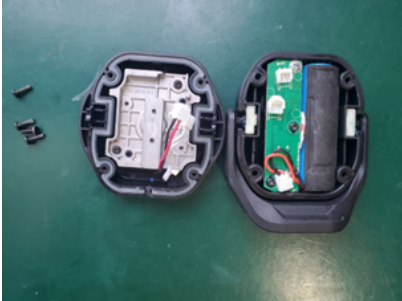
#### Step 1

Overview



#### Step 2

Remove 4x screws.



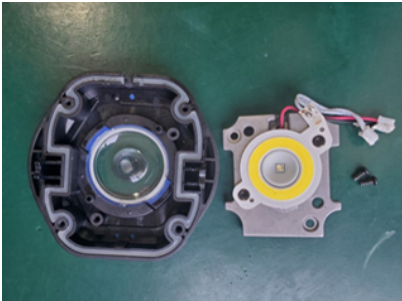
#### Step 3

Remove 2x screws.



#### Step 4

Remove COB and LED.



#### Step 5

Remove 3x screws and disconnect the PCB

