

WL1400 LED Work Light

Item no: 2481636

1 Dismantling recommendations

- Disconnect from power supply.
- Ask help from a professional if needed.

2 Dismantling instructions

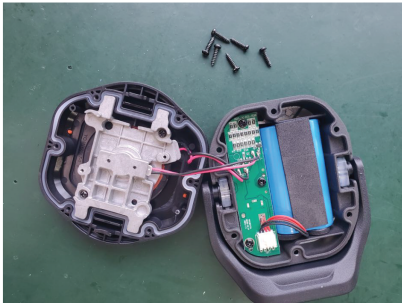
Step 1

Overview.



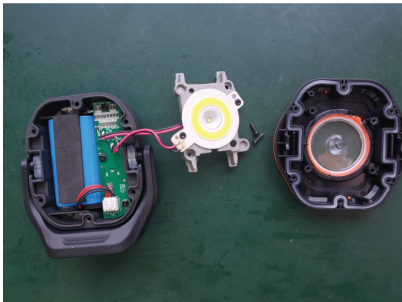
Step 2

Remove 6x screws from back casing.



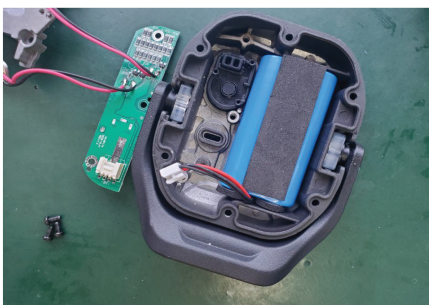
Step 3

Remove 2x screws and carefully remove COB and SMD.



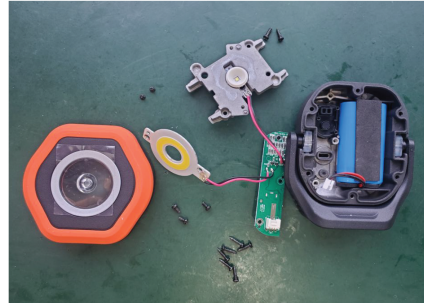
Step 4

Remove 3x screws and carefully remove the PCB.



Step 6

Disassembled



This is a publication by Conrad Electronic SE, Klaus-Conrad-Str. 1, D-92240 Hirschau (www.conrad.com).

All rights including translation reserved. Reproduction by any method (e.g. photocopying, microfilming or the capture in electronic data processing systems) requires prior written approval from the editor. Reprinting, also in part, is prohibited. This publication reflects the technical status at the time of printing.

Copyright by Conrad Electronic SE.

*2481636_V1_0622_hs_en 9007199821912715 I2/O1 en